

123°30'0"W 123°28'0"W 123°26'0"W 123°24'0"W 123°22'0"W 123°20'0"W 123°18'0"W 123°16'0"W 123°14'0"W 123°12'0"W 123°10'0"W 123°8'0"W 123°6'0"W 123°4'0"W

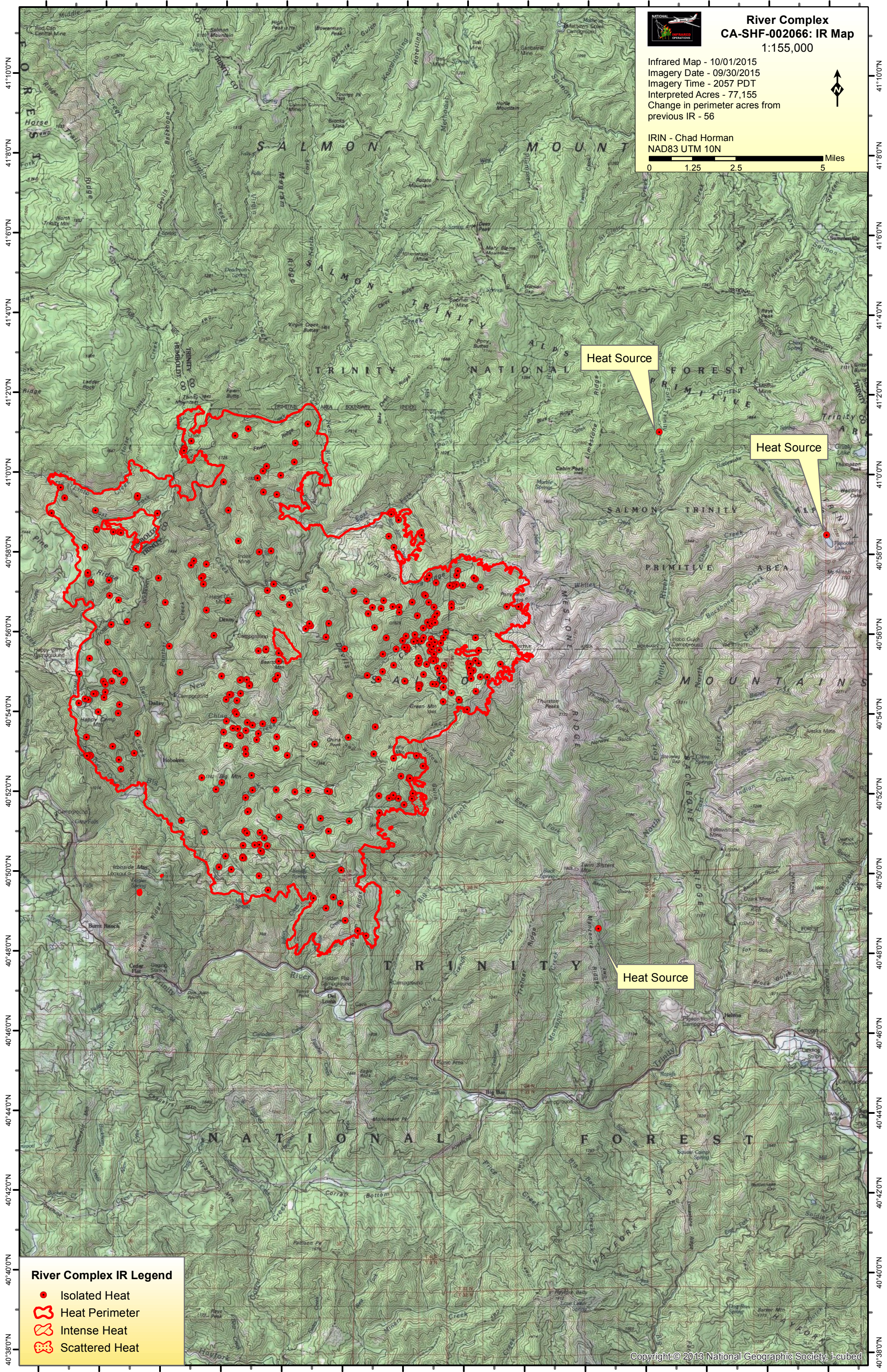
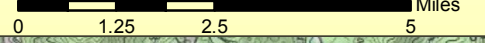


### River Complex CA-SHF-002066: IR Map 1:155,000

Infrared Map - 10/01/2015  
Imagery Date - 09/30/2015  
Imagery Time - 2057 PDT  
Interpreted Acres - 77,155  
Change in perimeter acres from  
previous IR - 56



IRIN - Chad Horman  
NAD83 UTM 10N







Heat Source

Heat Source

Heat Source

#### River Complex IR Legend

-  Isolated Heat
-  Heat Perimeter
-  Intense Heat
-  Scattered Heat

123°30'0"W 123°28'0"W 123°26'0"W 123°24'0"W 123°22'0"W 123°20'0"W 123°18'0"W 123°16'0"W 123°14'0"W 123°12'0"W 123°10'0"W 123°8'0"W 123°6'0"W 123°4'0"W