

123°30'0"W 123°28'0"W 123°26'0"W 123°24'0"W 123°22'0"W 123°20'0"W 123°18'0"W 123°16'0"W 123°14'0"W

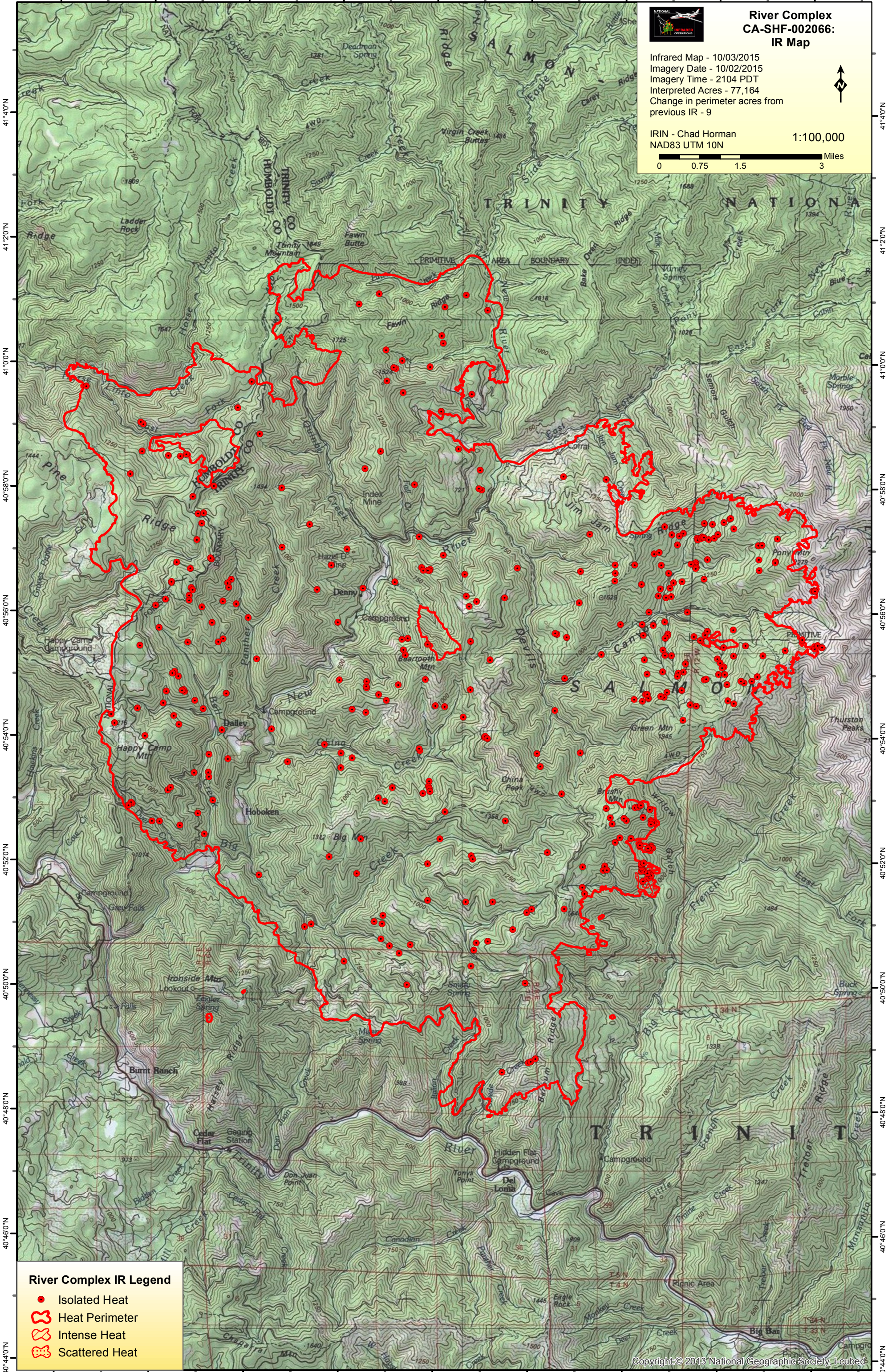


### River Complex CA-SHF-002066: IR Map

Infrared Map - 10/03/2015  
Imagery Date - 10/02/2015  
Imagery Time - 2104 PDT  
Interpreted Acres - 77,164  
Change in perimeter acres from  
previous IR - 9



IRIN - Chad Horman  
NAD83 UTM 10N  
1:100,000  
0 0.75 1.5 3 Miles



#### River Complex IR Legend

- Isolated Heat
- Heat Perimeter
- Intense Heat
- Scattered Heat

123°30'0"W 123°28'0"W 123°26'0"W 123°24'0"W 123°22'0"W 123°20'0"W 123°18'0"W 123°16'0"W 123°14'0"W