

123°30'0"W 123°28'0"W 123°26'0"W 123°24'0"W 123°22'0"W 123°20'0"W 123°18'0"W 123°16'0"W 123°14'0"W

41°6'0"N  
41°4'0"N  
41°2'0"N  
41°0'0"N  
40°58'0"N  
40°56'0"N  
40°54'0"N  
40°52'0"N  
40°50'0"N  
40°48'0"N  
40°46'0"N  
40°44'0"N

41°6'0"N  
41°4'0"N  
41°2'0"N  
41°0'0"N  
40°58'0"N  
40°56'0"N  
40°54'0"N  
40°52'0"N  
40°50'0"N  
40°48'0"N  
40°46'0"N  
40°44'0"N

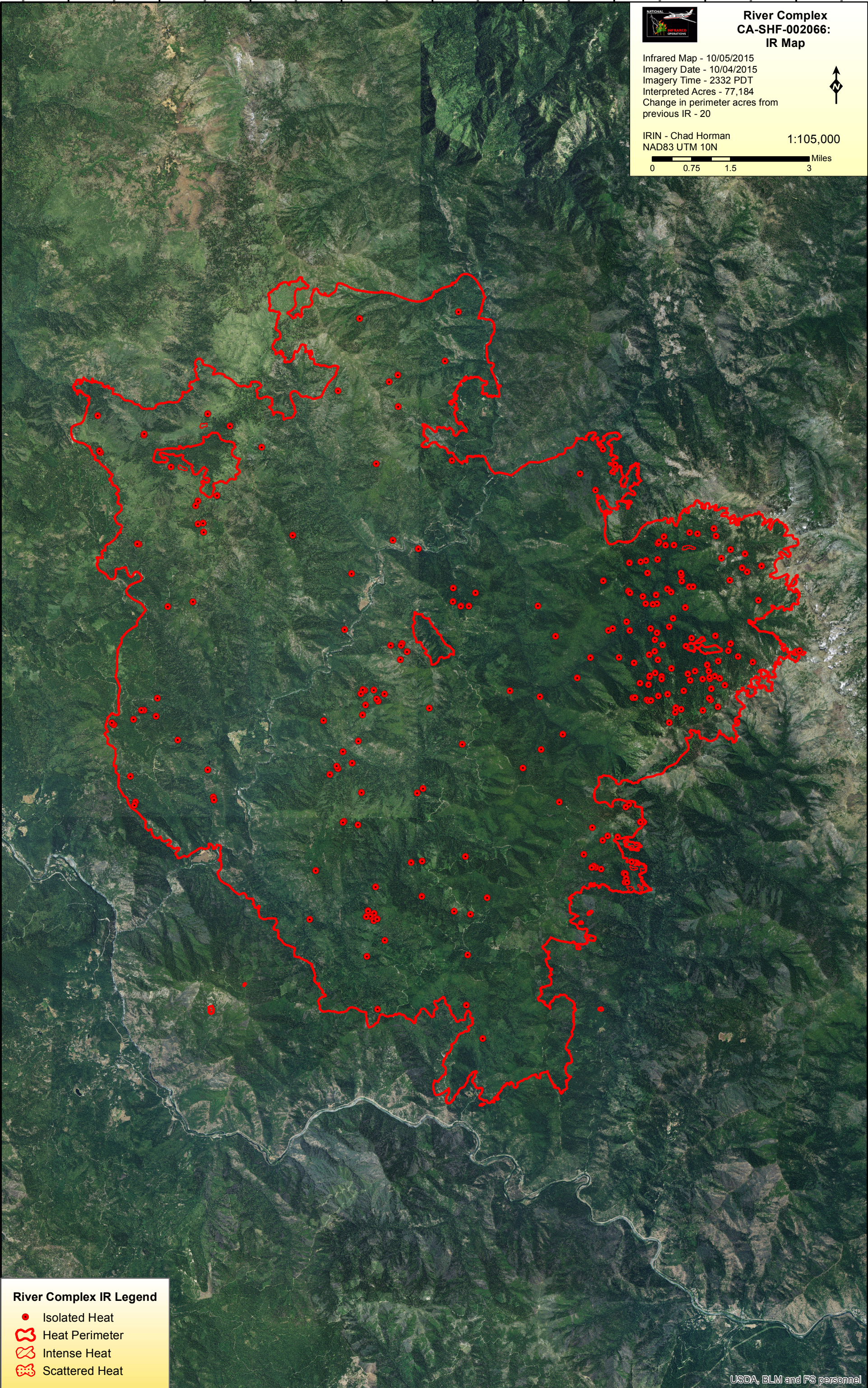


### River Complex CA-SHF-002066: IR Map





Infrared Map - 10/05/2015  
Imagery Date - 10/04/2015  
Imagery Time - 2332 PDT  
Interpreted Acres - 77,184  
Change in perimeter acres from  
previous IR - 20



IRIN - Chad Horman 1:105,000  
NAD83 UTM 10N



#### River Complex IR Legend

-  Isolated Heat
-  Heat Perimeter
-  Intense Heat
-  Scattered Heat

123°30'0"W 123°28'0"W 123°26'0"W 123°24'0"W 123°22'0"W 123°20'0"W 123°18'0"W 123°16'0"W 123°14'0"W