

123°30'0"W 123°28'0"W 123°26'0"W 123°24'0"W 123°22'0"W 123°20'0"W 123°18'0"W 123°16'0"W 123°14'0"W

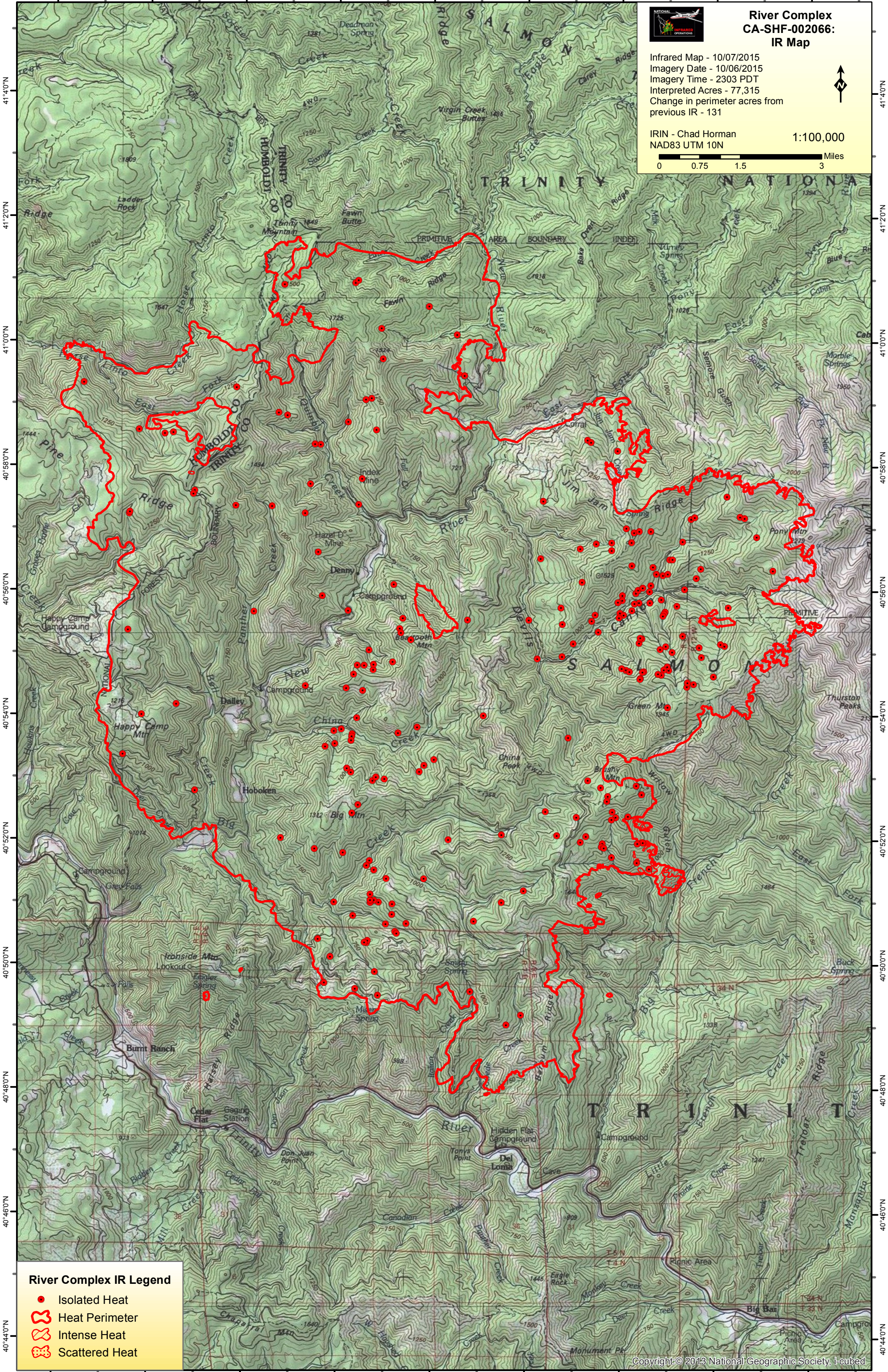
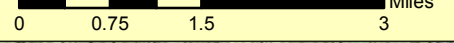


River Complex CA-SHF-002066: IR Map

Infrared Map - 10/07/2015
Imagery Date - 10/06/2015
Imagery Time - 2303 PDT
Interpreted Acres - 77,315
Change in perimeter acres from
previous IR - 131



IRIN - Chad Horman
NAD83 UTM 10N
1:100,000



River Complex IR Legend

- Isolated Heat
- ⬮ Heat Perimeter
- ⬮ Intense Heat
- ⬮ Scattered Heat

123°30'0"W 123°28'0"W 123°26'0"W 123°24'0"W 123°22'0"W 123°20'0"W 123°18'0"W 123°16'0"W 123°14'0"W