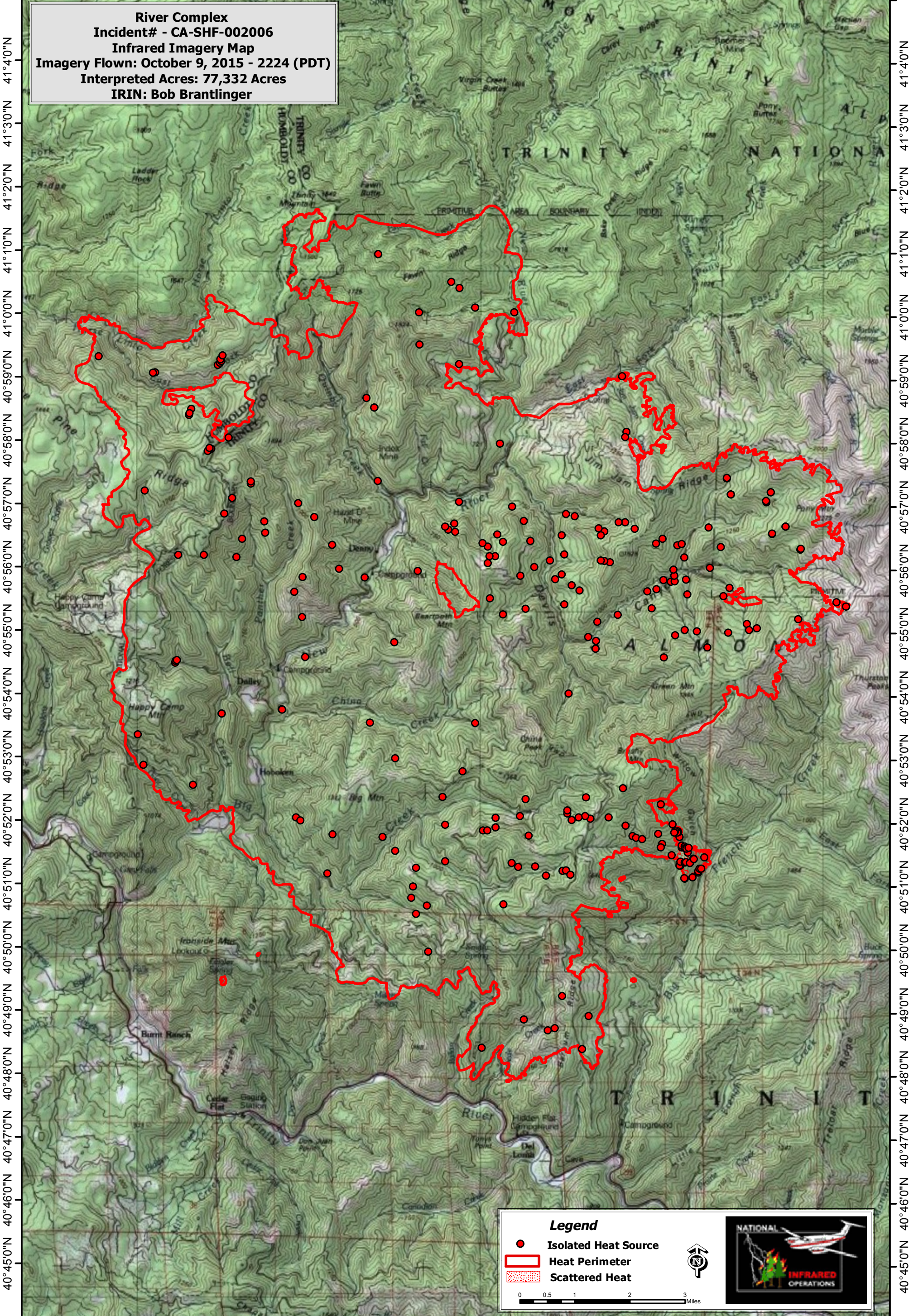


123°31'0"W 123°29'0"W 123°27'0"W 123°25'0"W 123°23'0"W 123°21'0"W 123°19'0"W 123°17'0"W 123°15'0"W 123°13'0"W

**River Complex**  
**Incident# - CA-SHF-002006**  
**Infrared Imagery Map**  
**Imagery Flown: October 9, 2015 - 2224 (PDT)**  
**Interpreted Acres: 77,332 Acres**  
**IRIN: Bob Brantlinger**



**Legend**

- Isolated Heat Source
- Heat Perimeter
- Scattered Heat

0 0.5 1 2 3 Miles

NATIONAL  
INFRARED  
OPERATIONS

123°29'0"W 123°27'0"W 123°25'0"W 123°23'0"W 123°21'0"W 123°19'0"W 123°17'0"W 123°15'0"W 123°13'0"W

40°45'0"N 40°46'0"N 40°47'0"N 40°48'0"N 40°49'0"N 40°50'0"N 40°51'0"N 40°52'0"N 40°53'0"N 40°54'0"N 40°55'0"N 40°56'0"N 40°57'0"N 40°58'0"N 40°59'0"N 41°0'0"N 41°1'0"N 41°2'0"N 41°3'0"N 41°4'0"N

40°45'0"N 40°46'0"N 40°47'0"N 40°48'0"N 40°49'0"N 40°50'0"N 40°51'0"N 40°52'0"N 40°53'0"N 40°54'0"N 40°55'0"N 40°56'0"N 40°57'0"N 40°58'0"N 40°59'0"N 41°0'0"N 41°1'0"N 41°2'0"N 41°3'0"N 41°4'0"N