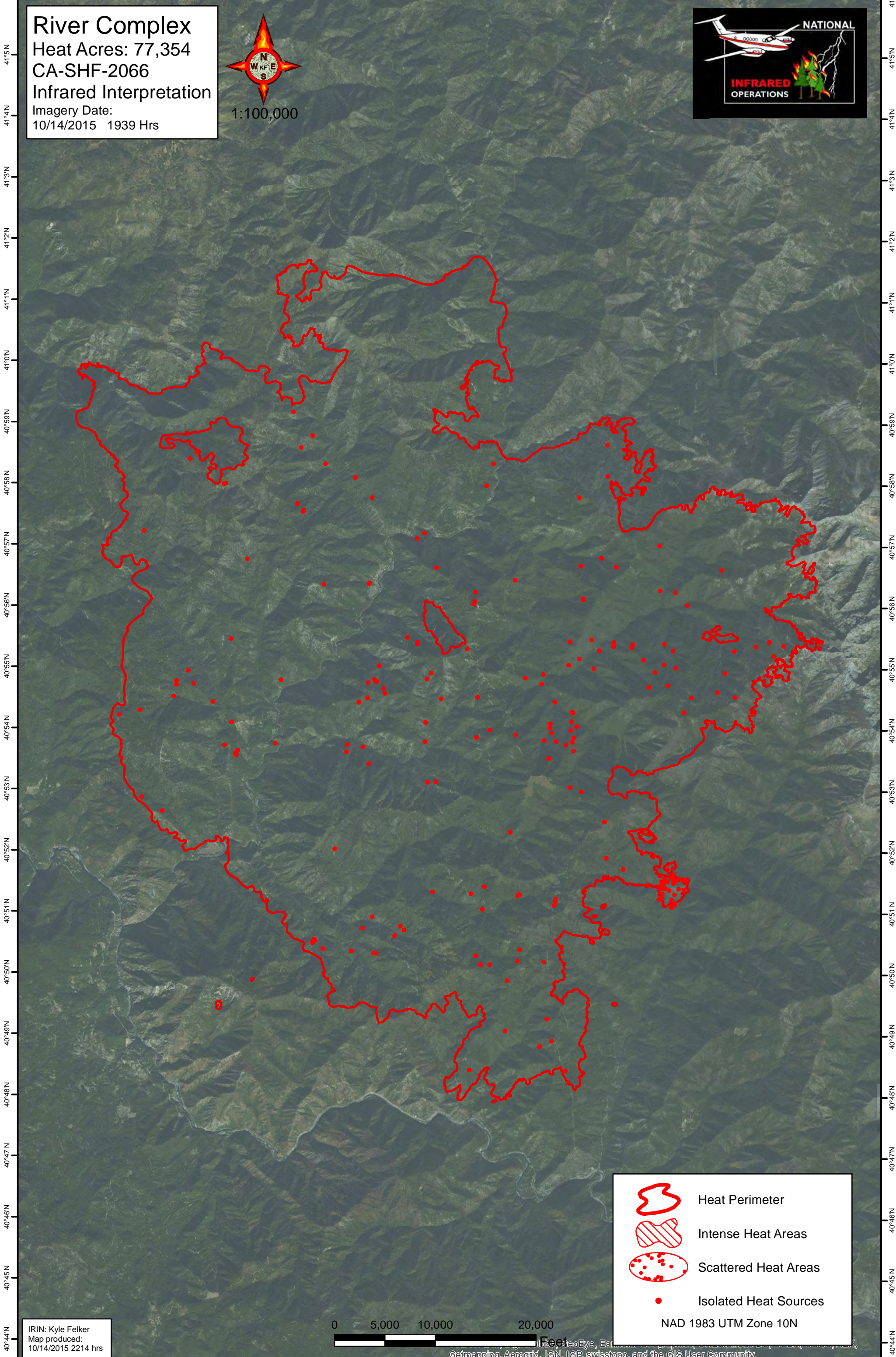






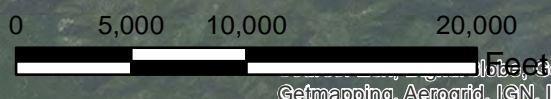
123°31'W 123°30'W 123°29'W 123°28'W 123°27'W 123°26'W 123°25'W 123°24'W 123°23'W 123°22'W 123°21'W 123°20'W 123°19'W 123°18'W 123°17'W 123°16'W 123°15'W 123°14'W 123°13'W

**River Complex**  
Heat Acres: 77,354  
CA-SHF-2066  
Infrared Interpretation  
Imagery Date:  
10/14/2015 1939 Hrs



-  Heat Perimeter
  -  Intense Heat Areas
  -  Scattered Heat Areas
  -  Isolated Heat Sources
- NAD 1983 UTM Zone 10N

IRIN: Kyle Felker  
Map produced:  
10/14/2015 2214 hrs



Getmapping, Aerogrid, IGN, IGP, swisstopo, and the GIS User Community

123°31'W 123°30'W 123°29'W 123°28'W 123°27'W 123°26'W 123°25'W 123°24'W 123°23'W 123°22'W 123°21'W 123°20'W 123°19'W 123°18'W 123°17'W 123°16'W 123°15'W 123°14'W 123°13'W