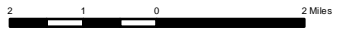


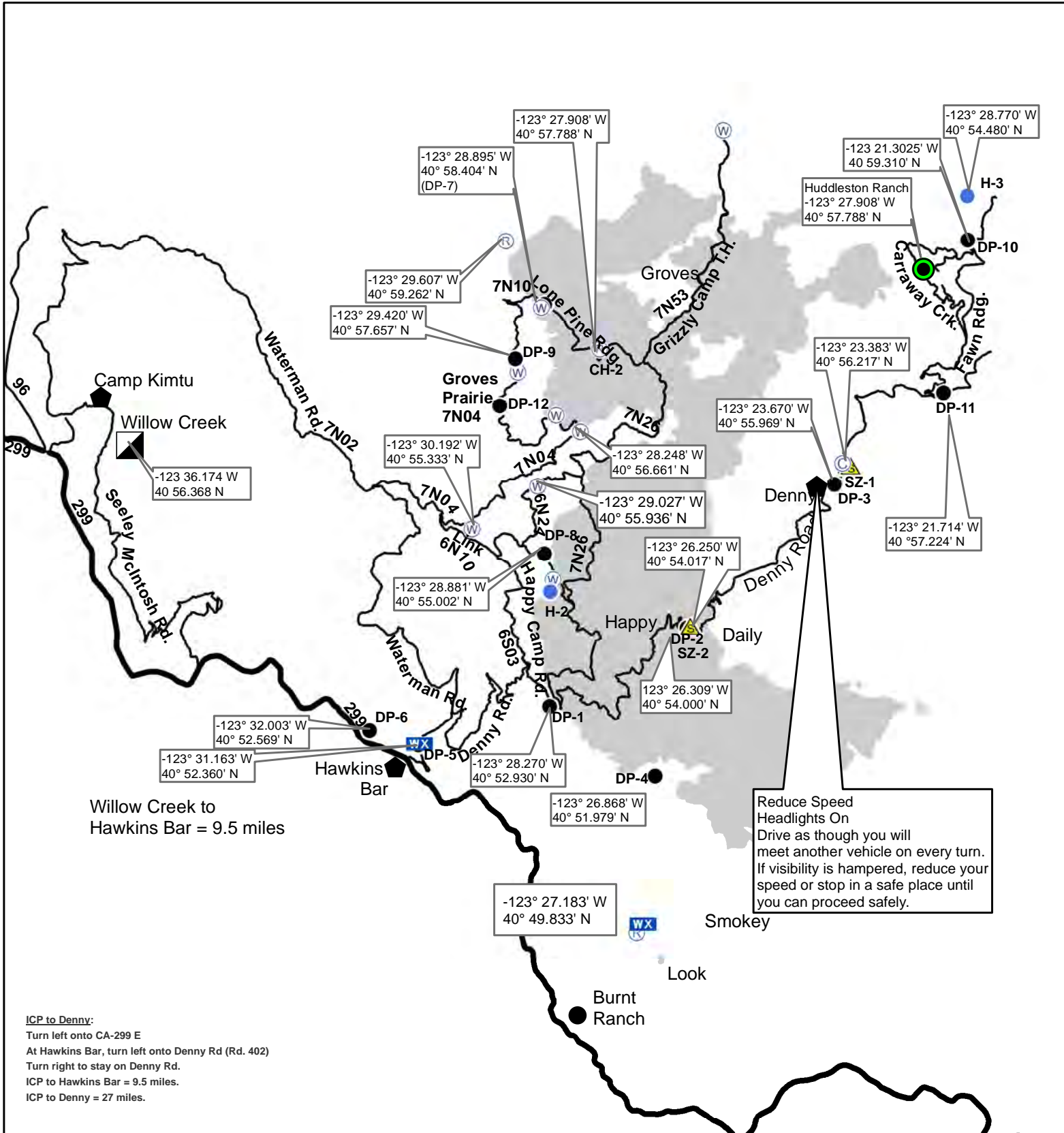
- Ⓒ Camp
- Drop Point
- ▣ Incident Command Post
- WX Mobile Weather Unit
- Ⓔ Repeater
- ⚠ Safety Zone
- Ⓜ Water Source

- Uncontrolled Fire Edge
- XXXXXX Completed Dozer Line
- Completed Line
- H - H - Hand Line
- R - R - Road as Completed Line
- ⌈⌋ Wilderness



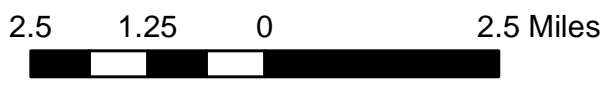
# River Complex Transportation

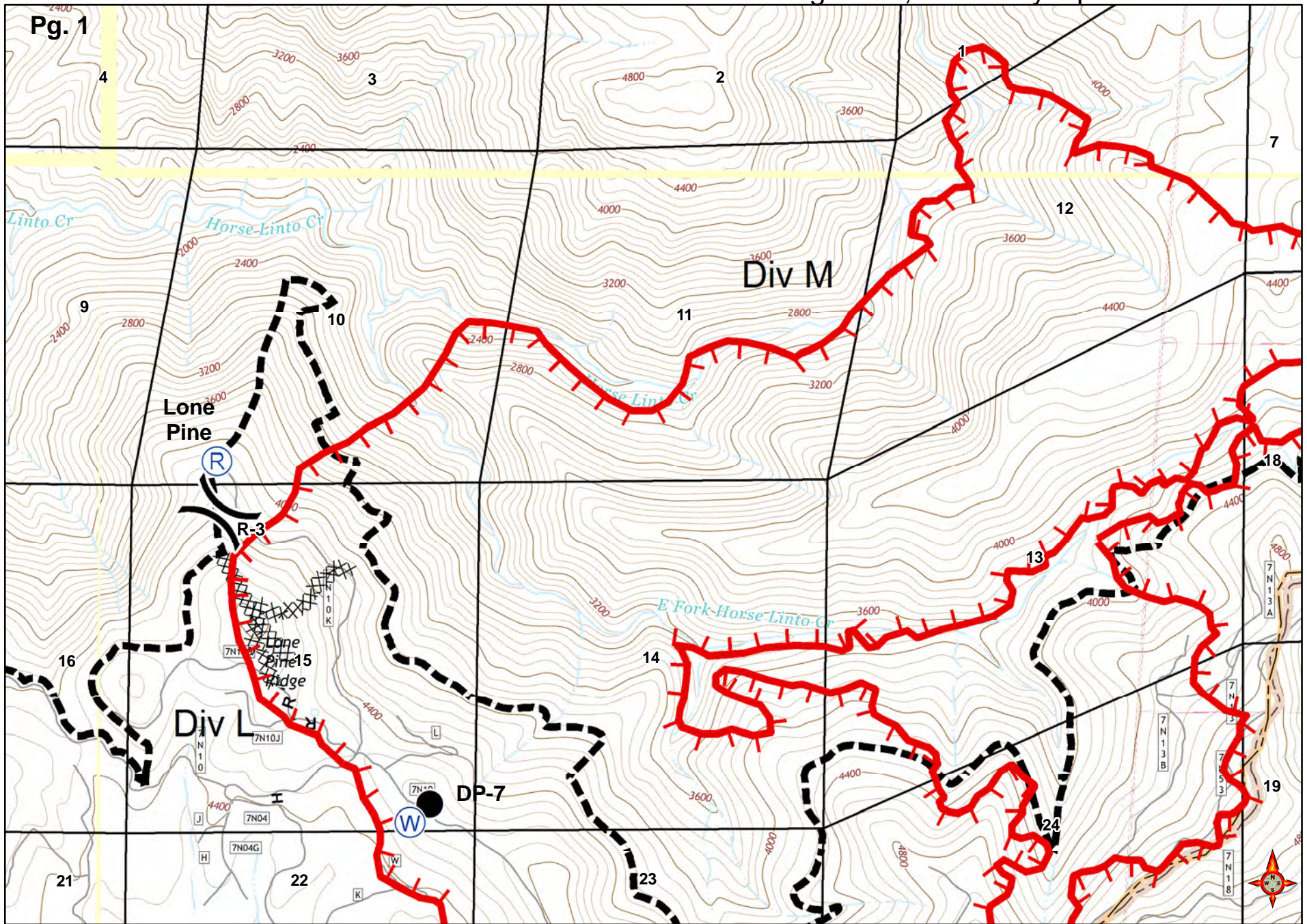
August 11, 2015



Willow Creek to  
Hawkins Bar = 9.5 miles

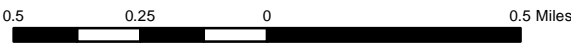
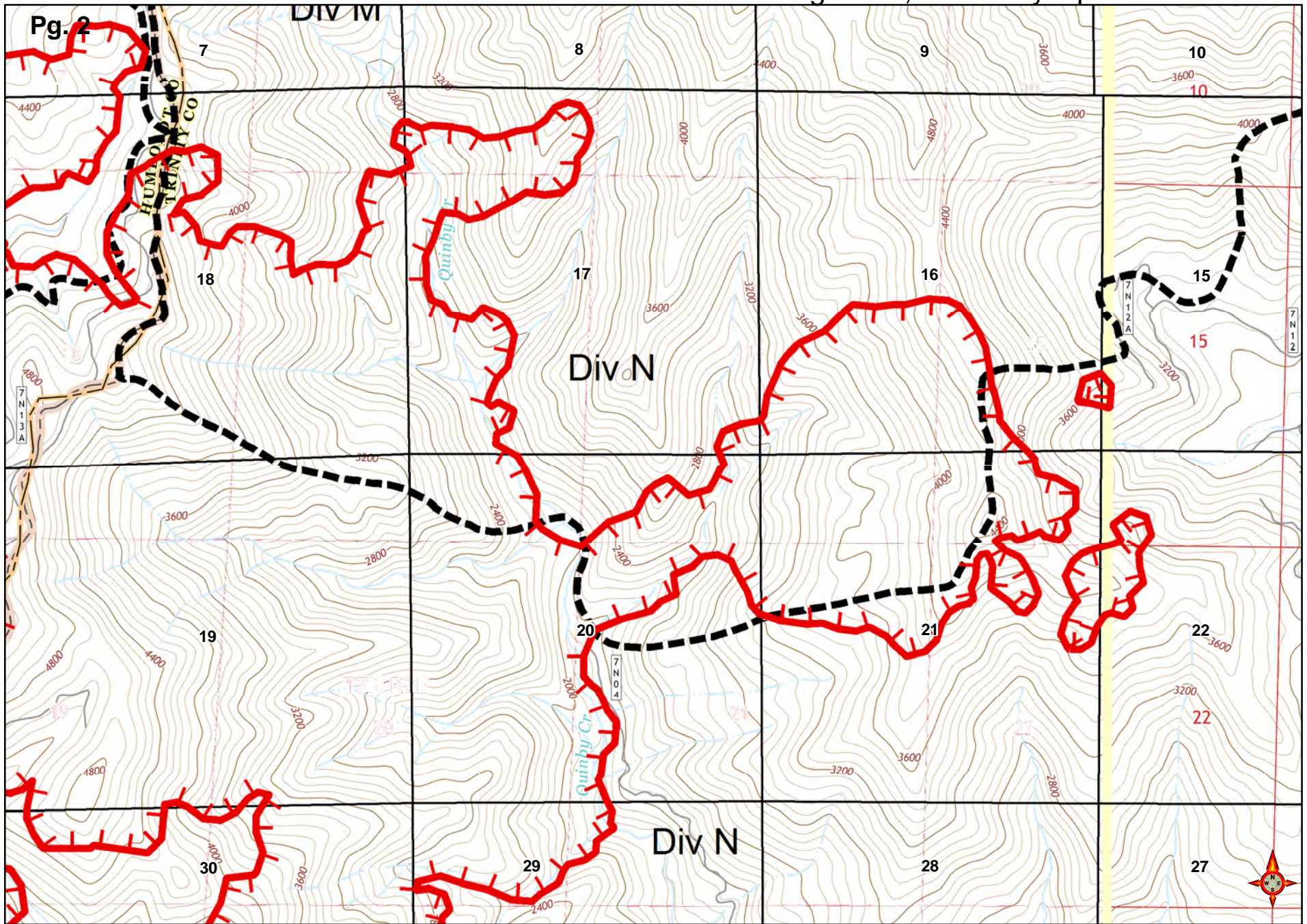
**ICP to Denny:**  
 Turn left onto CA-299 E  
 At Hawkins Bar, turn left onto Denny Rd (Rd. 402)  
 Turn right to stay on Denny Rd.  
 ICP to Hawkins Bar = 9.5 miles.  
 ICP to Denny = 27 miles.

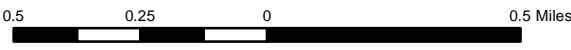
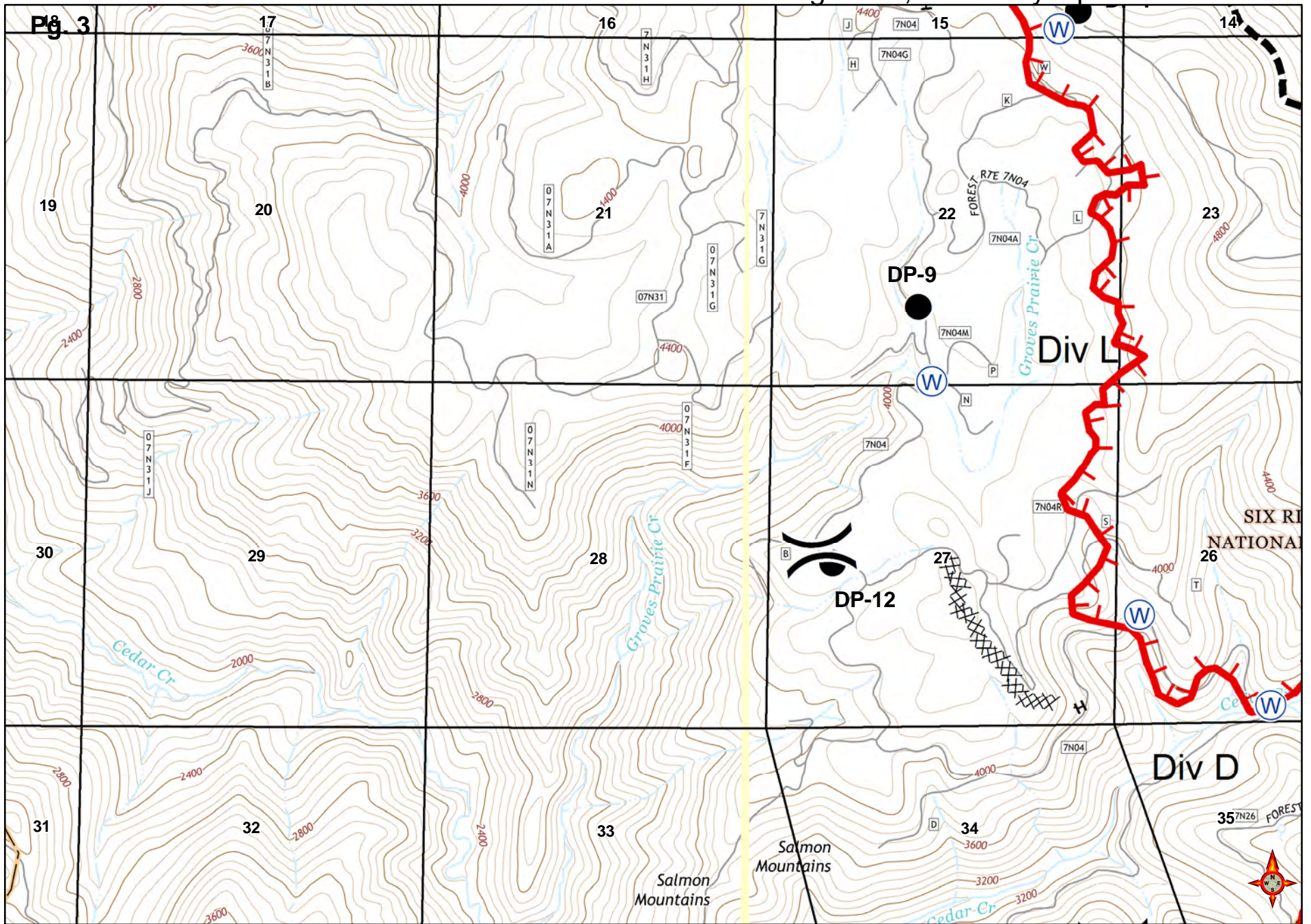


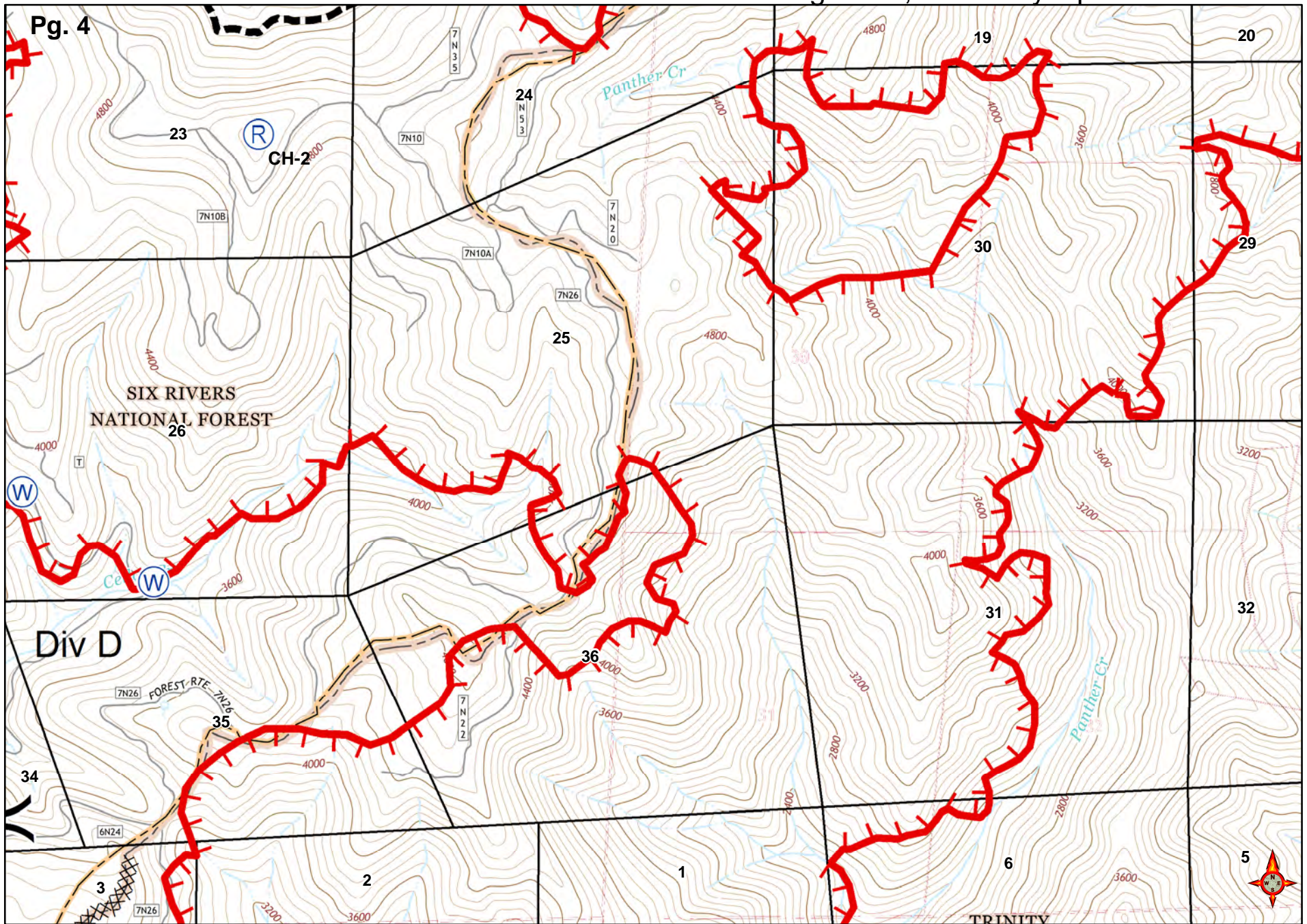


Pg. 1

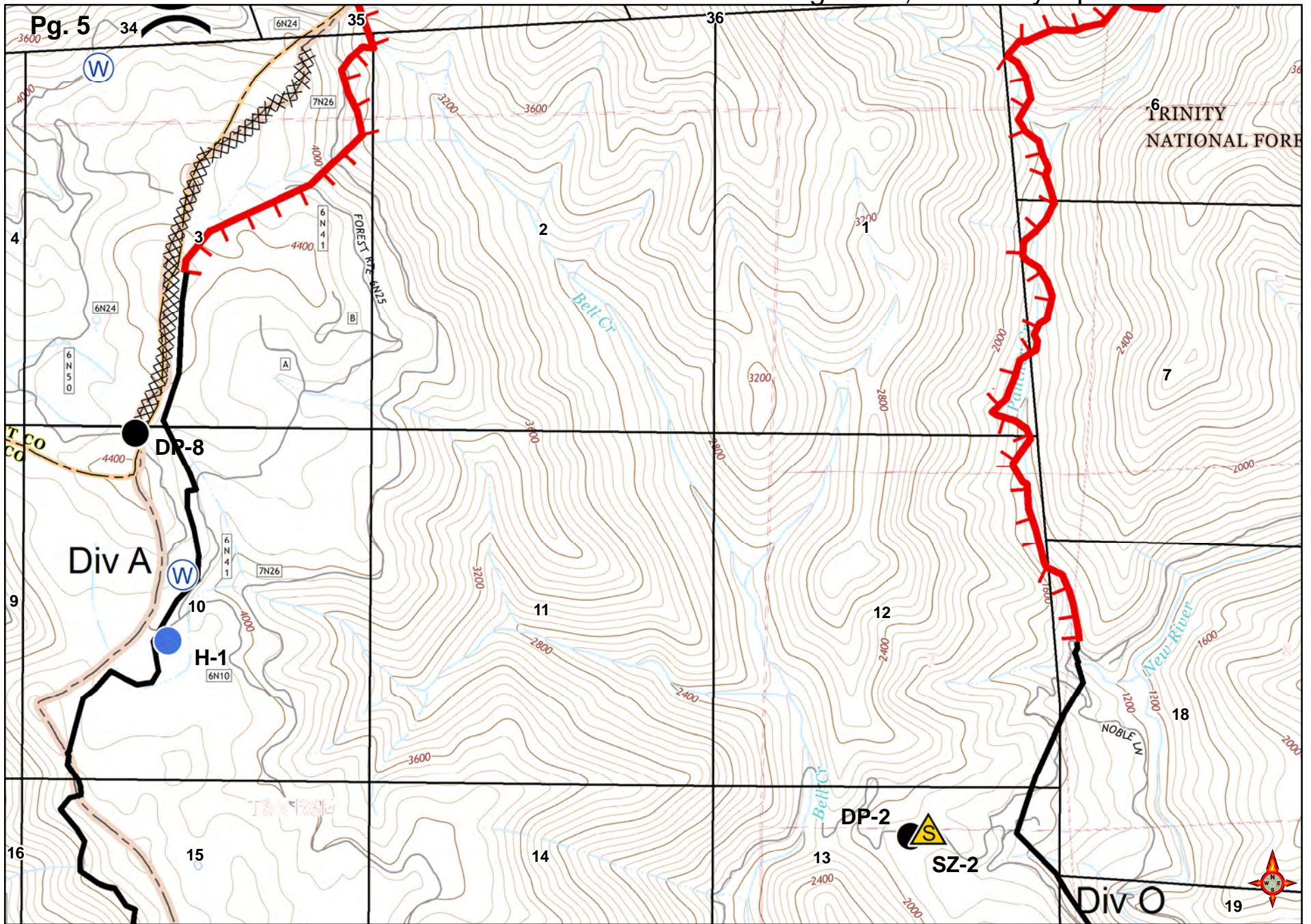
0.5 0.25 0 0.5 Miles



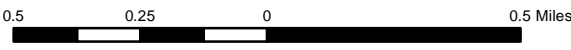
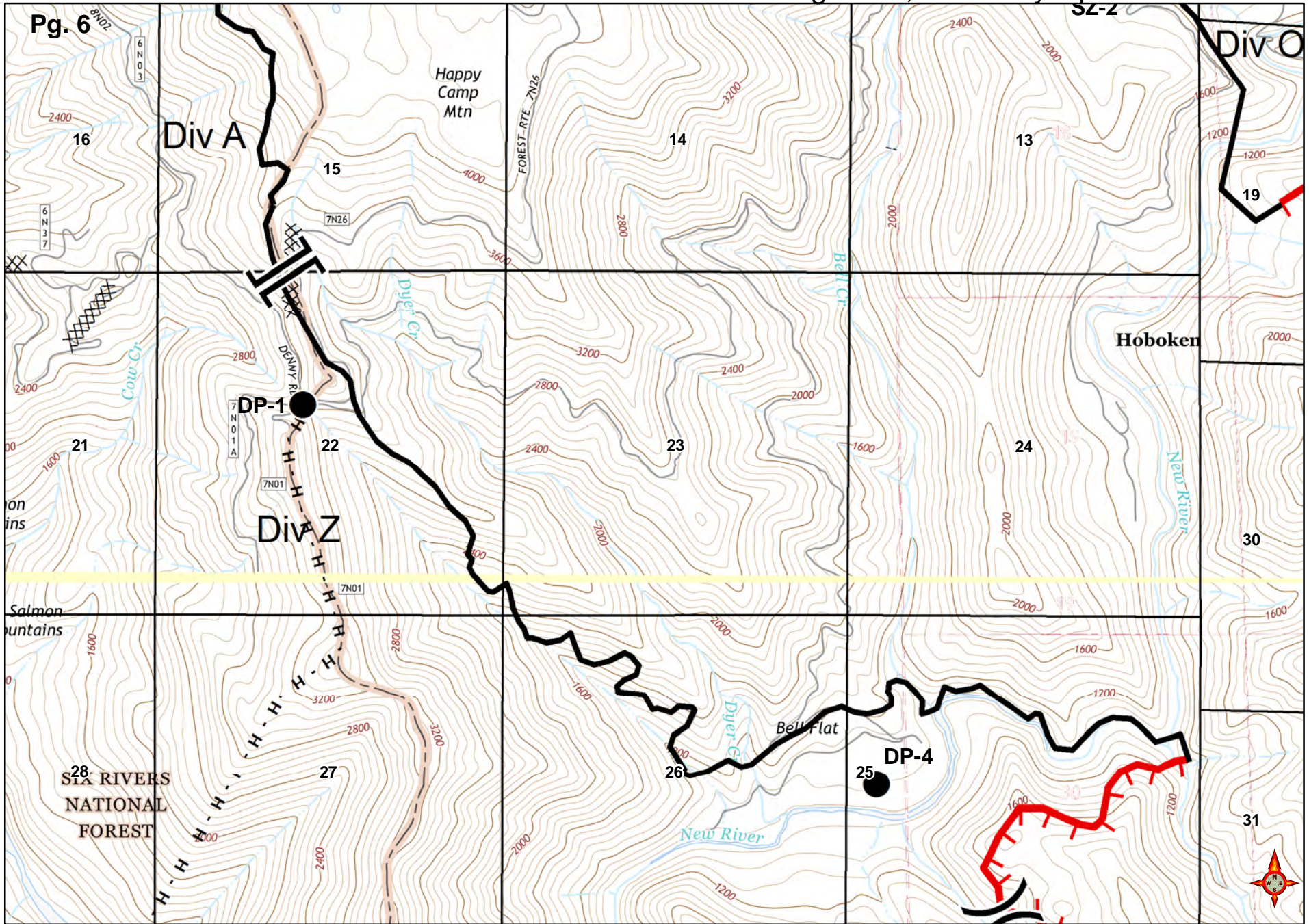




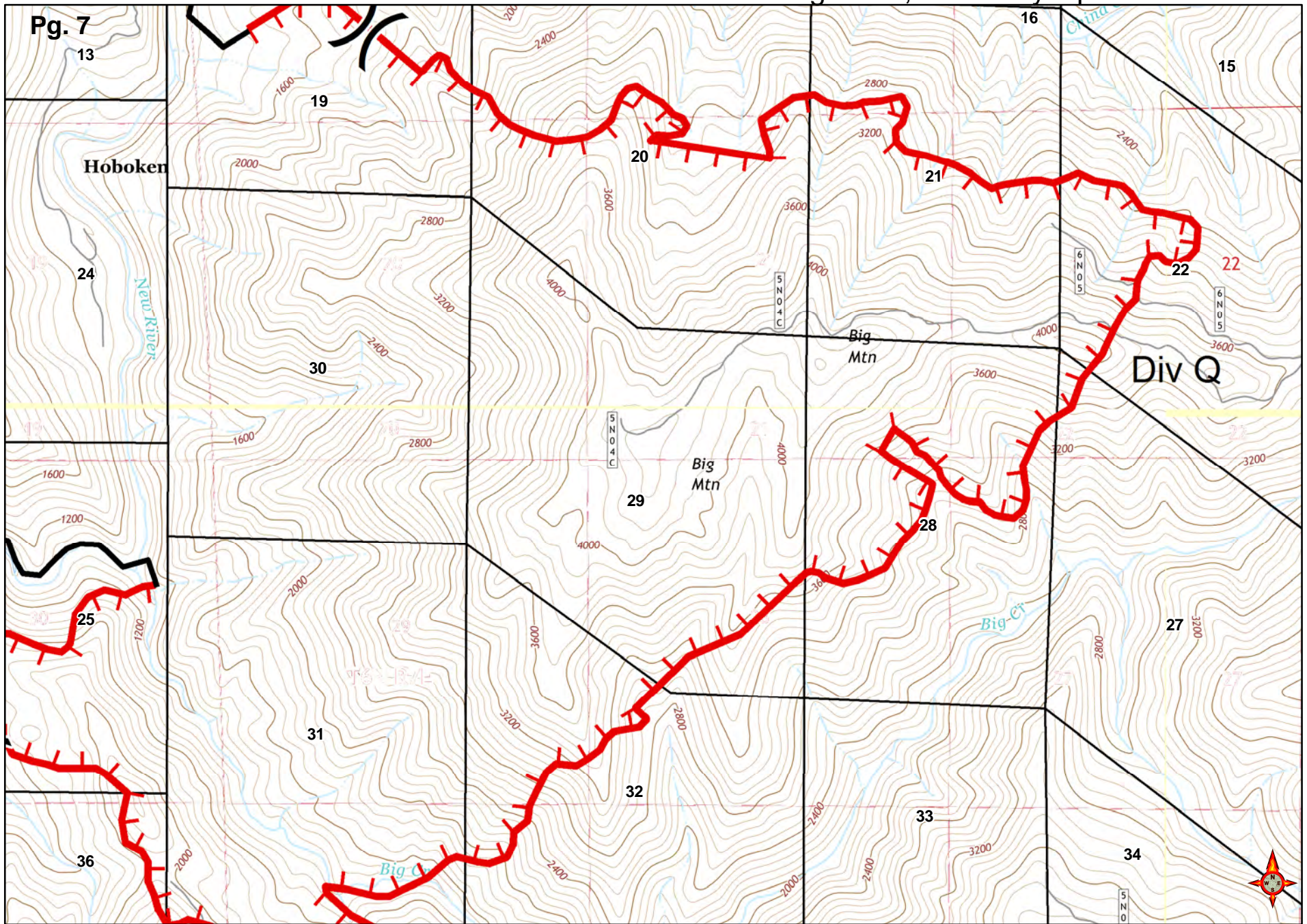
0.5 0.25 0 0.5 Miles



0.5 0.25 0 0.5 Miles







0.5 0.25 0 0.5 Miles

