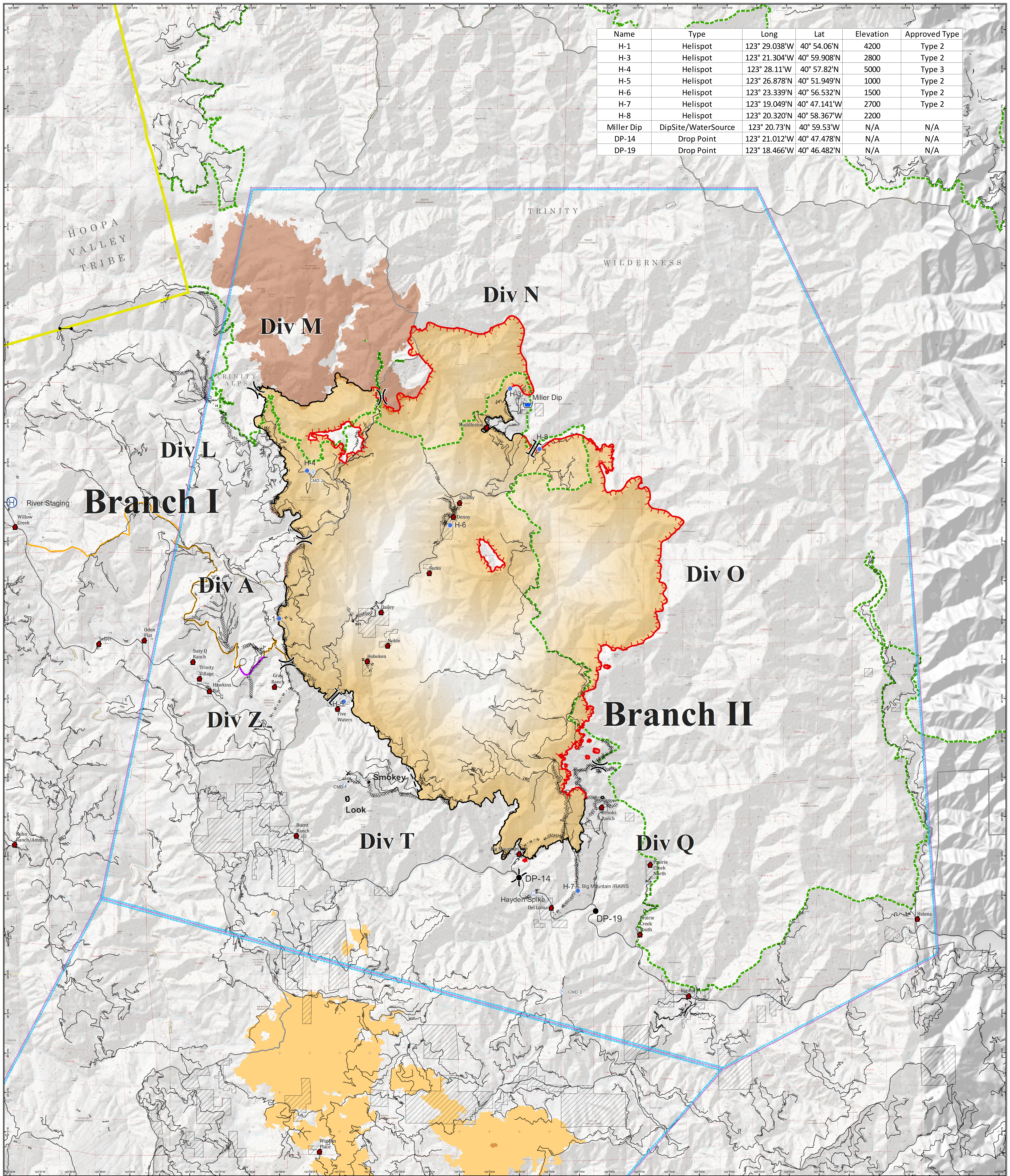


Name	Type	Long	Lat	Elevation	Approved Type
H-1	Helispot	123° 29.038'W	40° 54.06'N	4200	Type 2
H-3	Helispot	123° 21.304'W	40° 59.908'N	2800	Type 2
H-4	Helispot	123° 28.11'W	40° 57.82'N	5000	Type 3
H-5	Helispot	123° 26.878'N	40° 51.949'N	1000	Type 2
H-6	Helispot	123° 23.339'N	40° 56.532'N	1500	Type 2
H-7	Helispot	123° 19.049'N	40° 47.141'W	2700	Type 2
H-8	Helispot	123° 20.320'N	40° 58.367'W	2200	Type 2
Miller Dip	DipSite/WaterSource	123° 20.73'N	40° 59.53'W	N/A	N/A
DP-14	Drop Point	123° 21.012'W	40° 47.478'N	N/A	N/A
DP-19	Drop Point	123° 18.466'W	40° 46.482'N	N/A	N/A



# Air Operations

River Complex

CA-SHF-2066

08/31/2015



II	Branch	Ⓜ	Helibase		Uncontrolled Fire Edge		Line Break Completed		Control Line to be Prepped		Towns		Wilderness
X	Division	●	Helispot		Completed Dozer Line		Planned Fire Line		Proposed Dozer Line		TFR North		National Forest Boundary
Ⓢ	Camp	Ⓡ	Repeater		Completed Line		Proposed Dozer Line		K_Rail		Hoopa		2013 Corral Fire
●	Drop Point		Retardant/Mud Pit		Hand Line		Road		Road		Non Forest Service Ownership		South Complex

N

0 1 2 Miles