

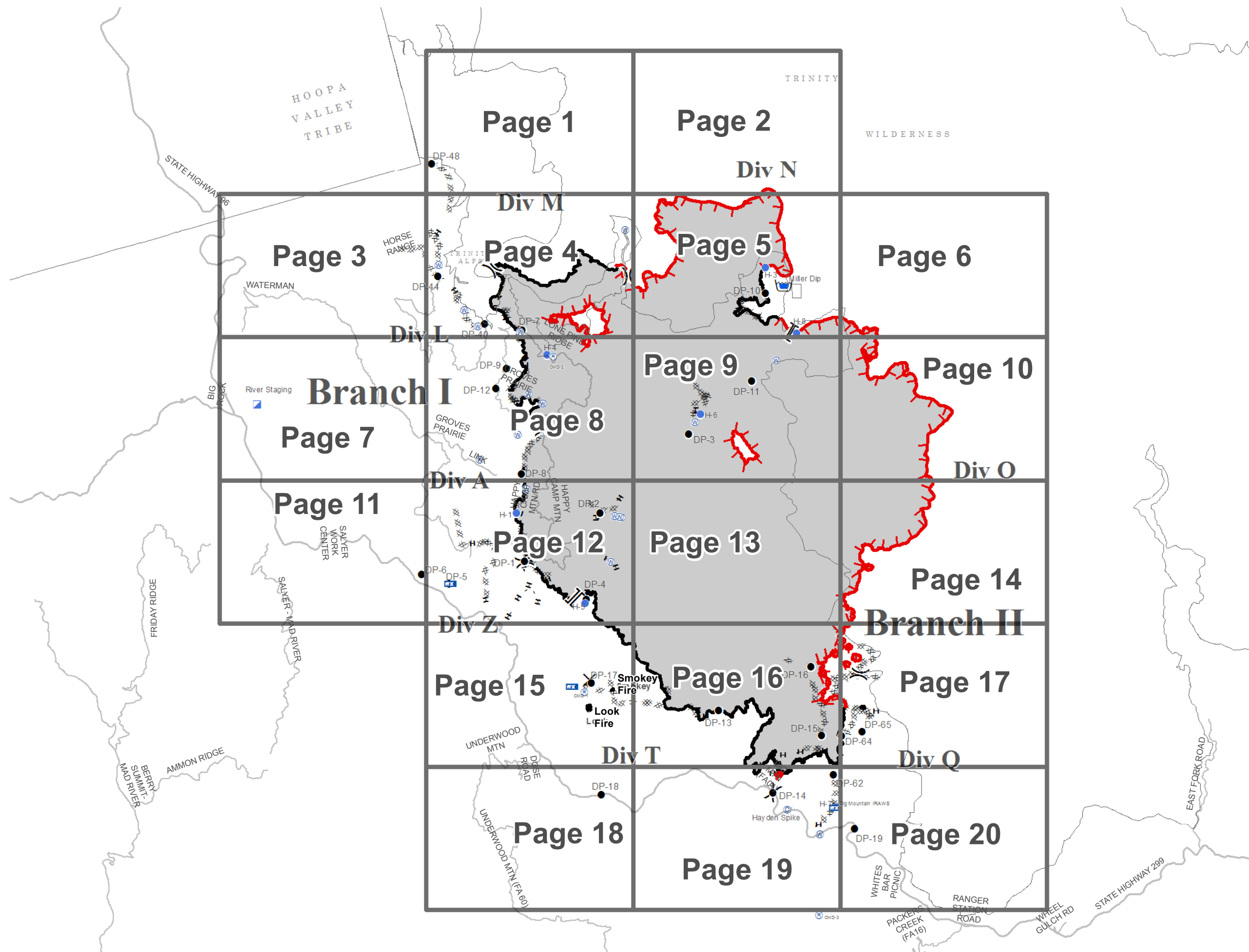
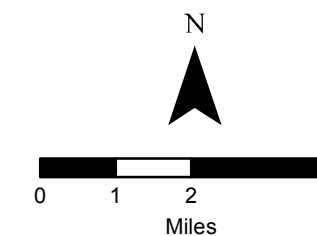
**River Complex
CA-SHF-002066**

August 31, 2015



IAP Index

- Incident Command Post
- Camp
- Drop Point
- Helispot
- Dip Site
- Mobile Weather Unit
- Repeater
- Water Source
- Branch
- Division
- Uncontrolled Fire Edge
- Proposed Dozer Line
- Completed Dozer Line
- Completed Line
- Hand Line



River Complex

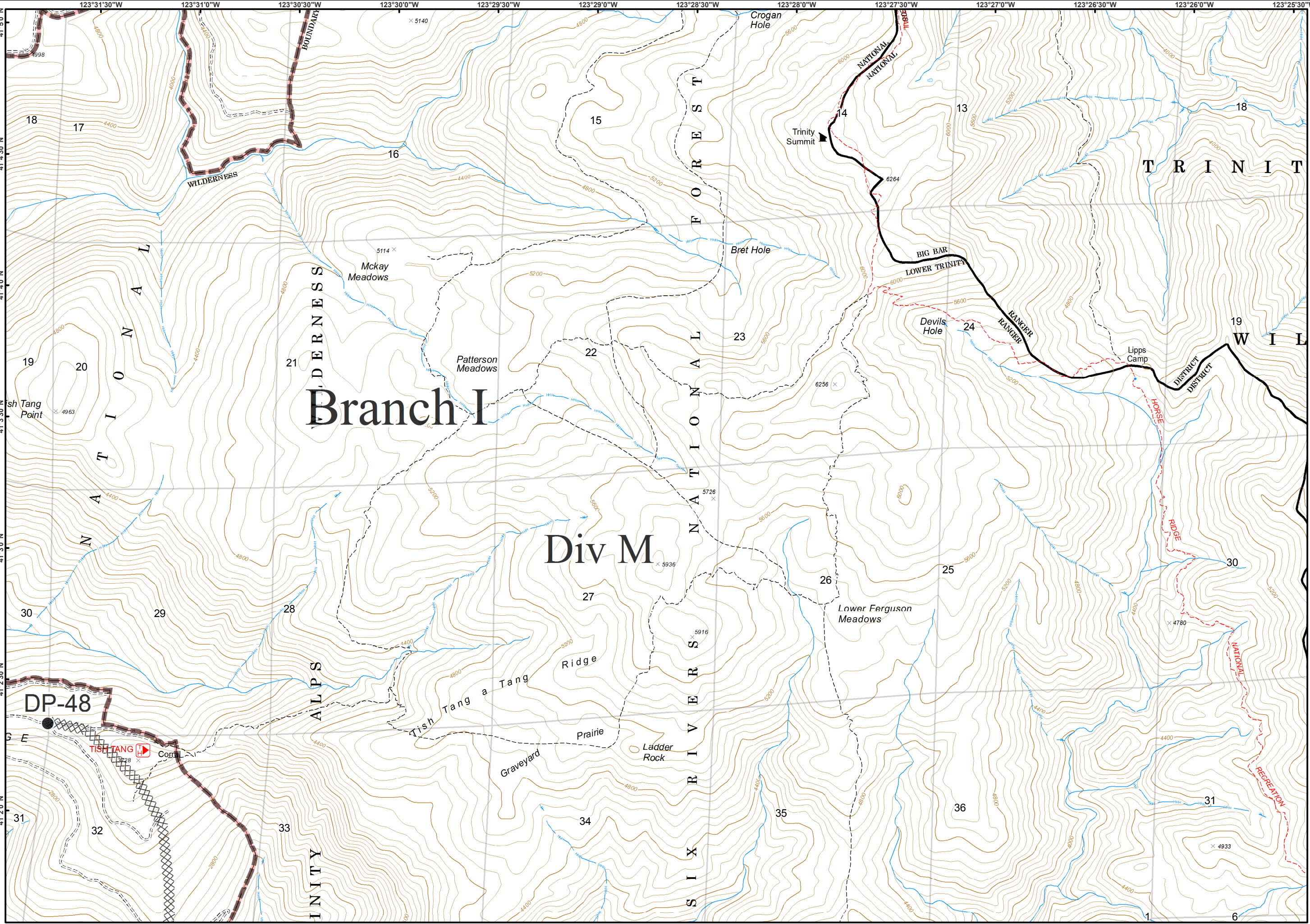
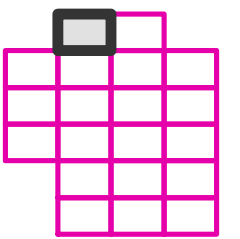
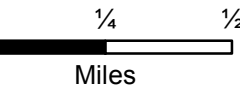
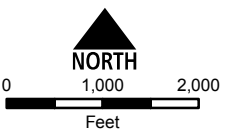
CA-SHF-002066

08/31/2015



IAP Tiles
Page - 1

- Drop Point
- XXXX Completed Dozer Line
- W Wilderness



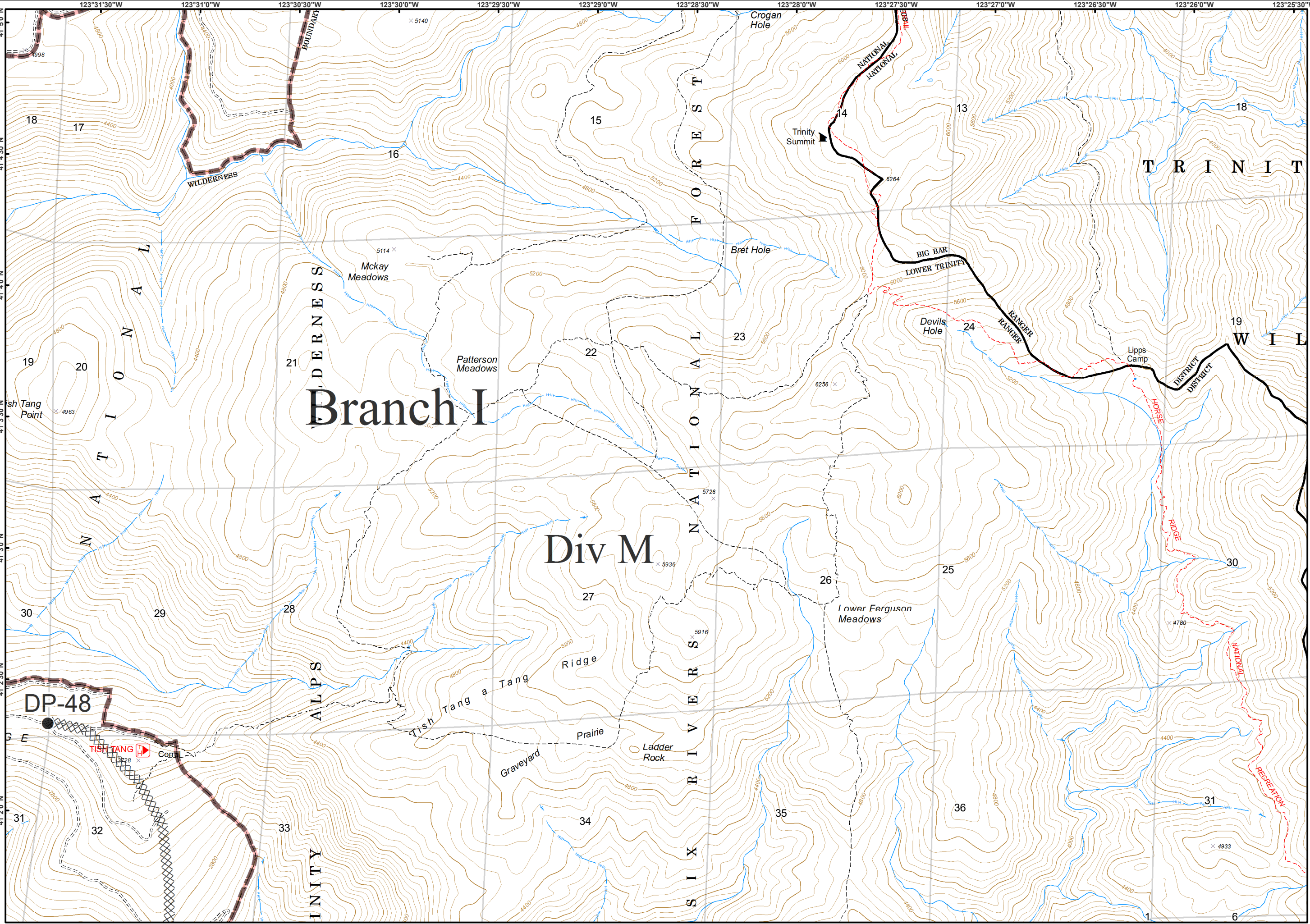
Branch I

Div M

DP-48

TISH TANG

CORRAL



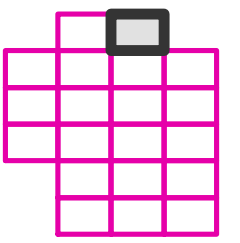
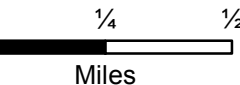
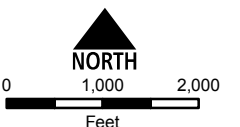
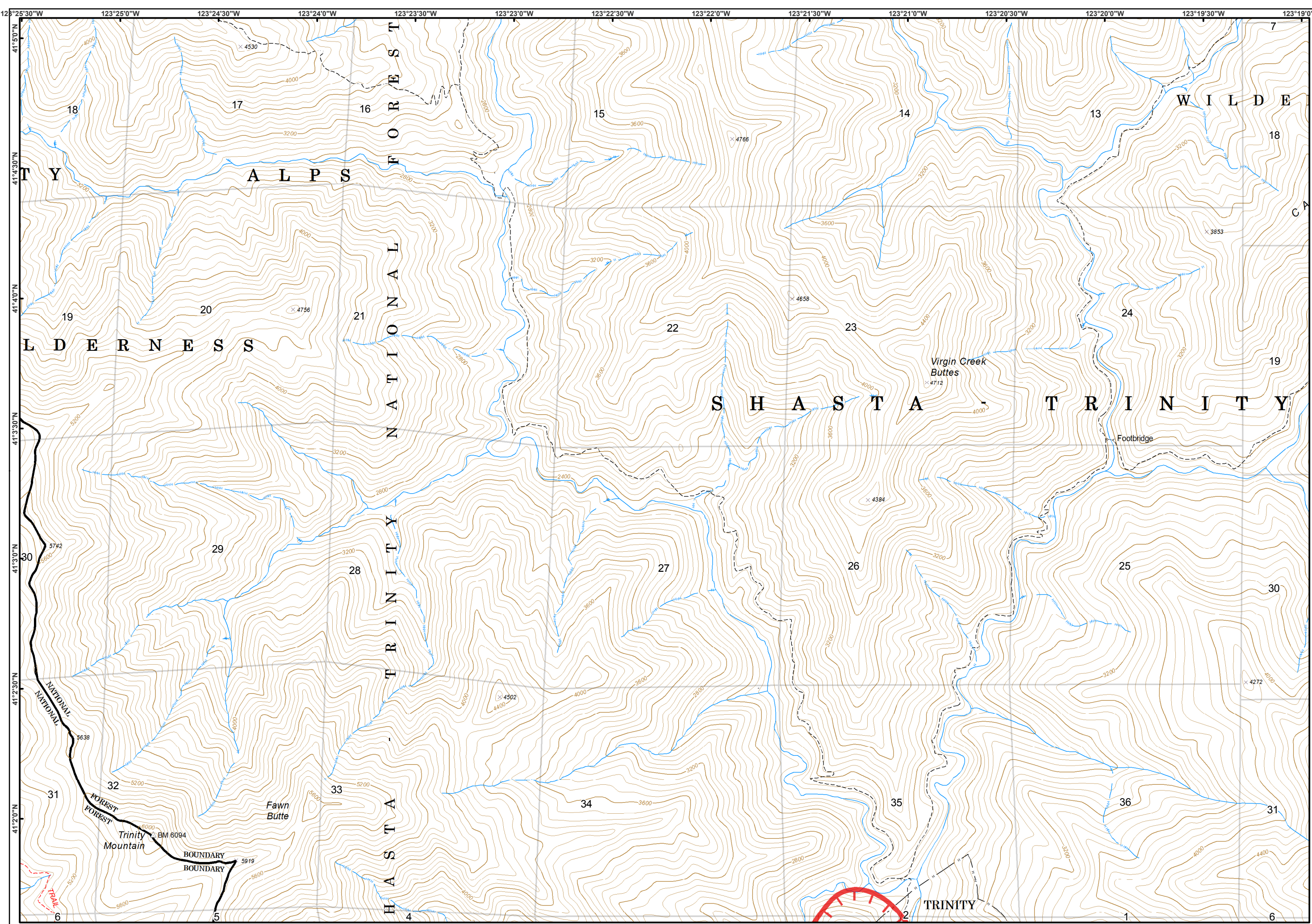
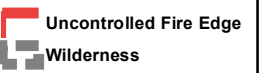
River Complex

CA-SHF-002066

08/31/2015



IAP Tiles
Page - 2



River Complex

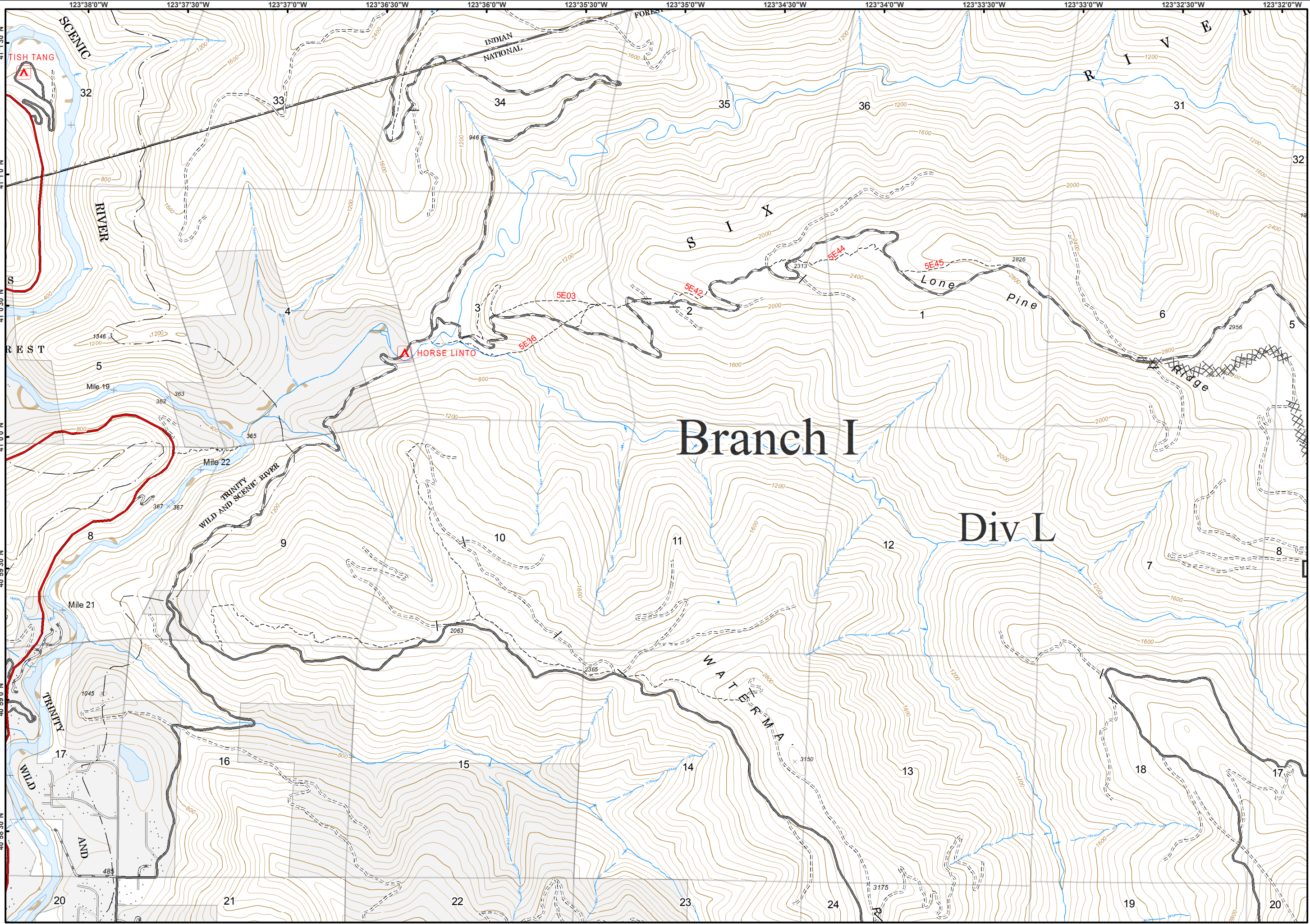
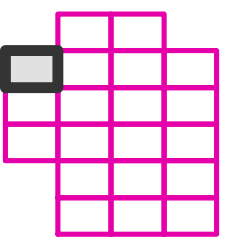
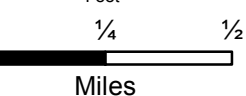
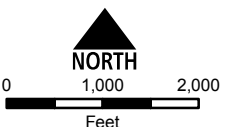
CA-SHF-002066

08/31/2015



IAP Tiles
Page - 3

Completed Dozer Line



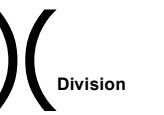
River Complex

CA-SHF-002066

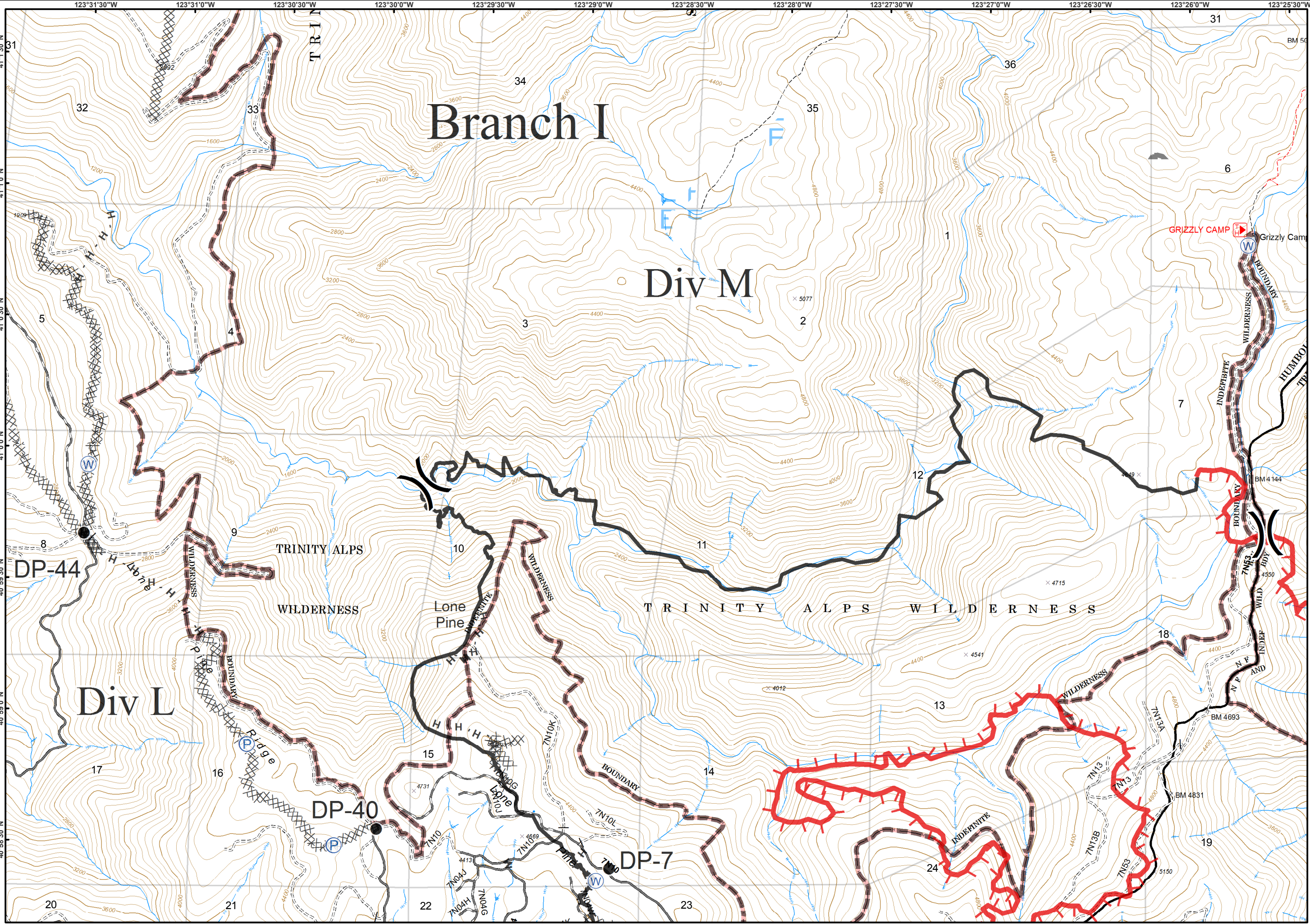
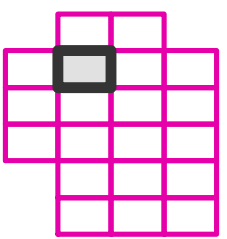
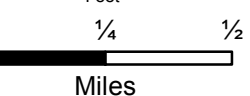
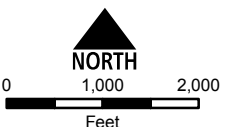
08/31/2015



IAP Tiles
Page - 4

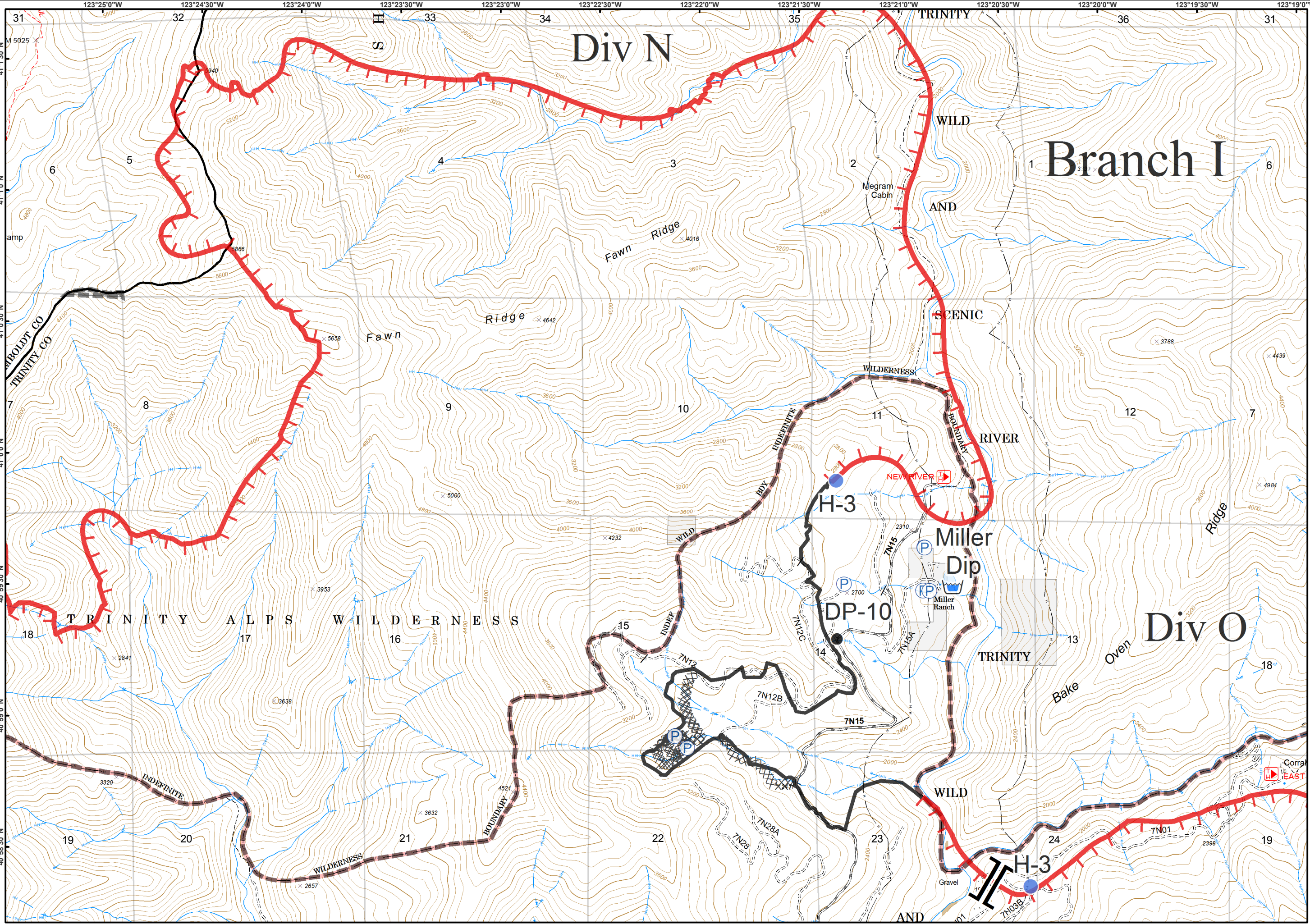
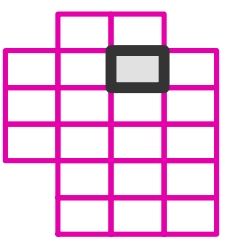
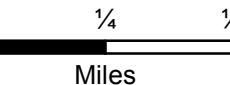
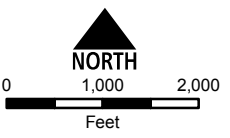


- Drop Point
- P Pump
- W Water Source
- Uncontrolled Fire Edge
- Completed Dozer Line
- Completed Line
- H - Hand Line
- Wilderness





- Drop Point
- Helispot
- P Pump
- Retardant/Mud Pit
- Uncontrolled Fire Edge
- Completed Dozer Line
- Completed Line
- Wilderness



River Complex

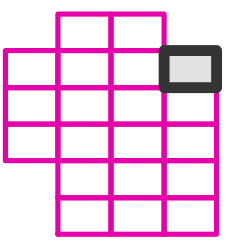
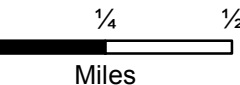
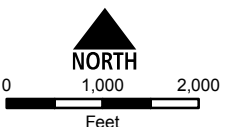
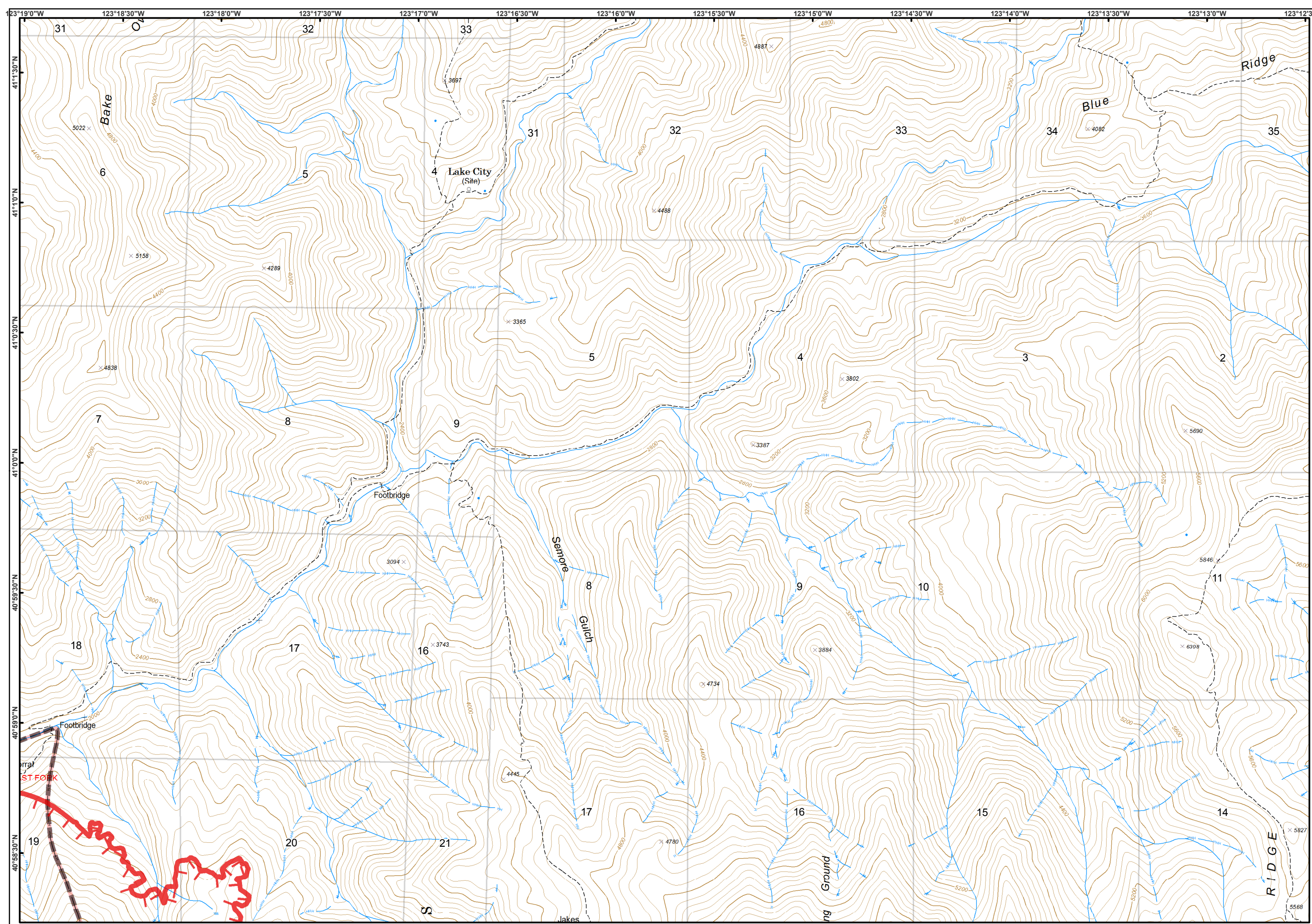
CA-SHF-002066

08/31/2015



IAP Tiles

Page - 6



River Complex

CA-SHF-002066

08/31/2015

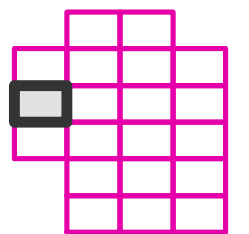
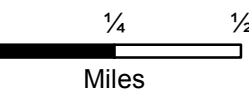
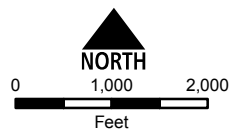


IAP Tiles
Page - 7

Helibase

Incident Command Post

Staging Area



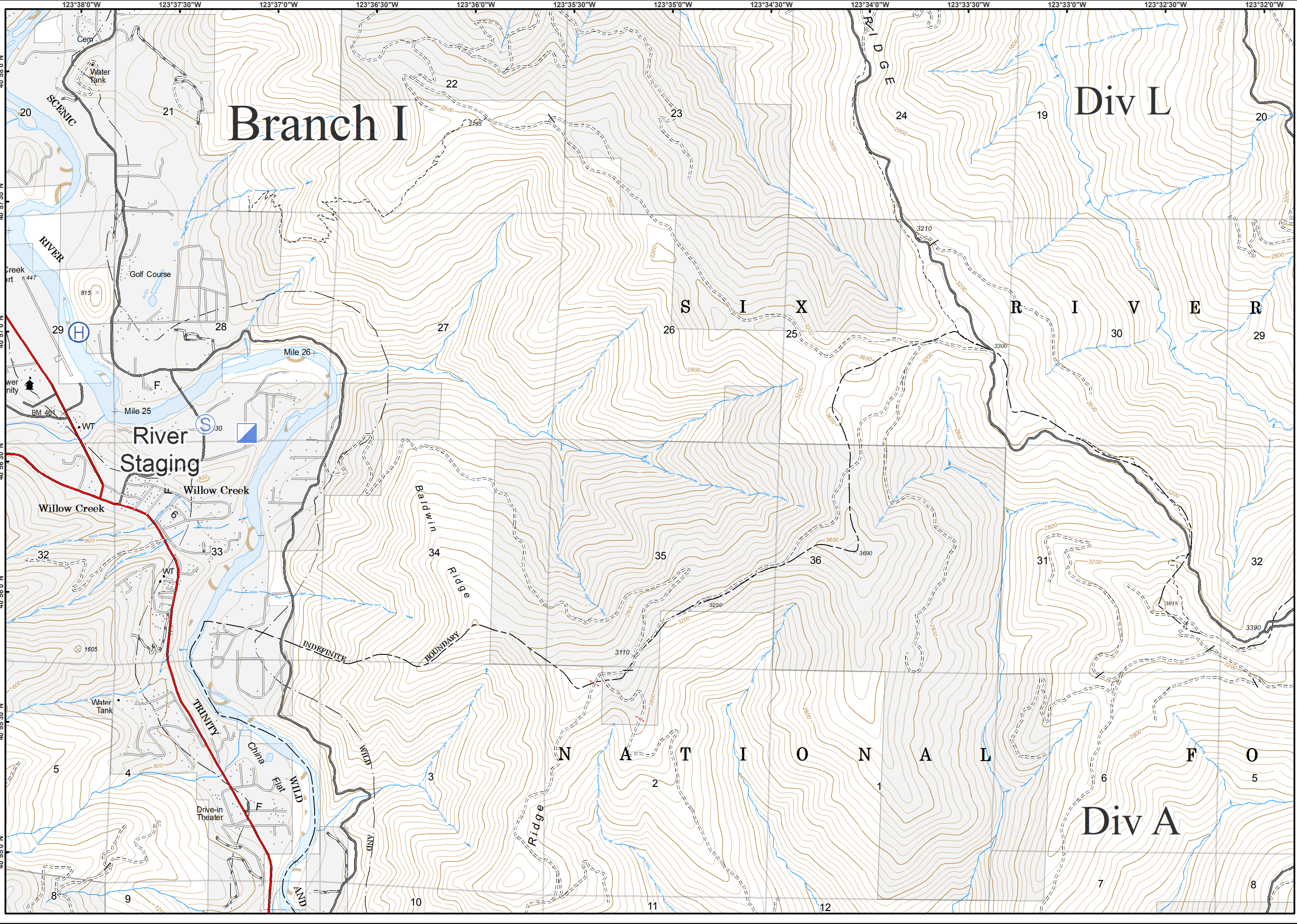
Branch I

Div L

S I X R I V E R

River Staging

Div A



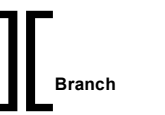
River Complex

CA-SHF-002066

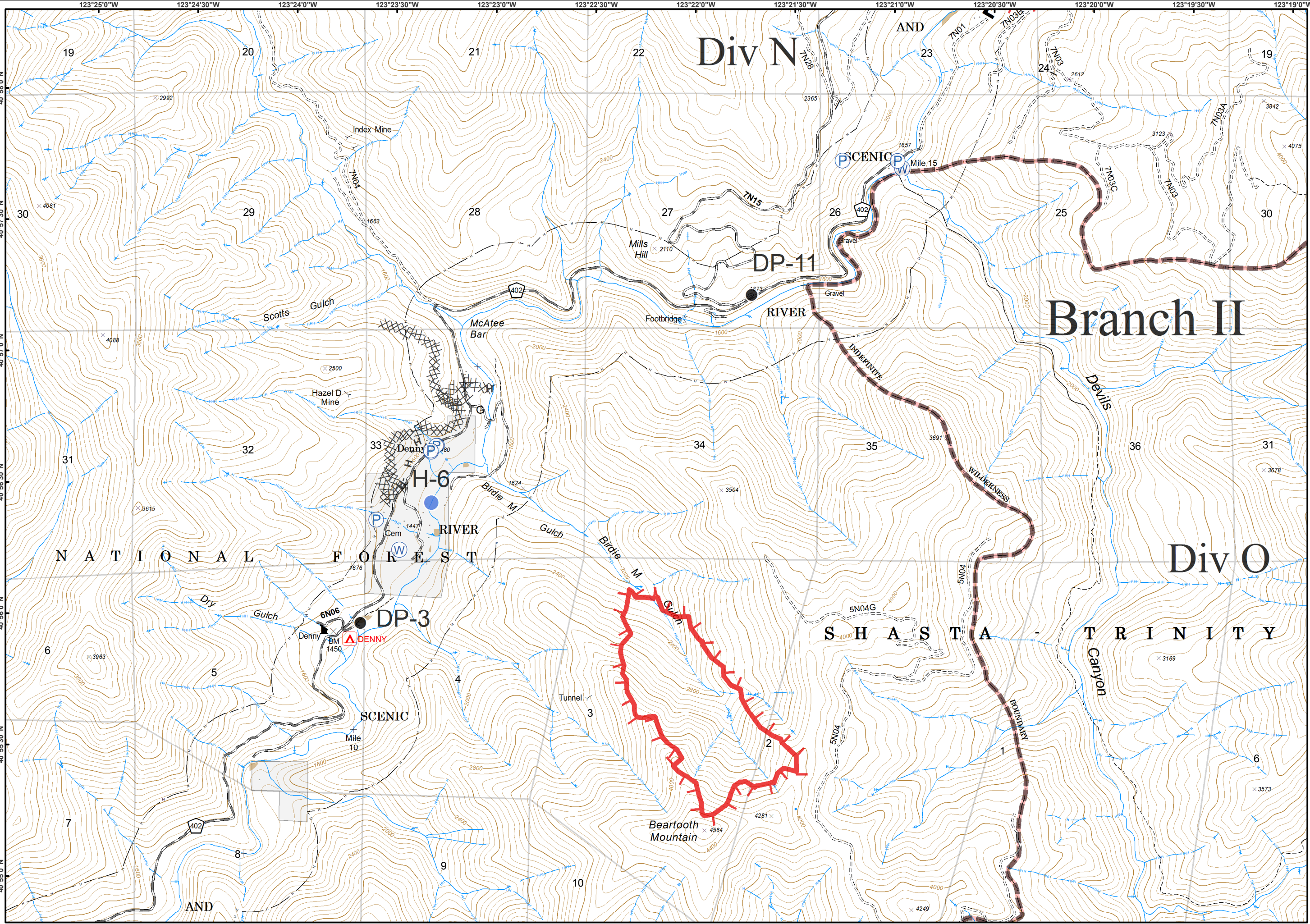
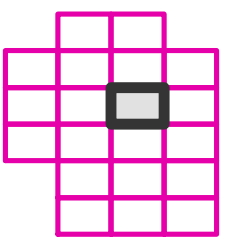
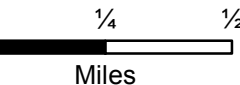
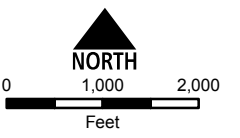
08/31/2015



IAP Tiles
Page - 9



- Drop Point
- Helispot
- P Pump
- W Water Source
- Uncontrolled Fire Edge
- Completed Dozer Line
- H - Hand Line
- Wilderness



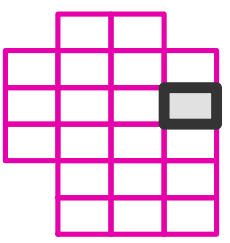
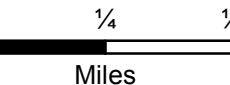
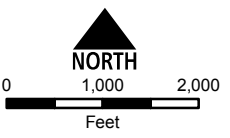
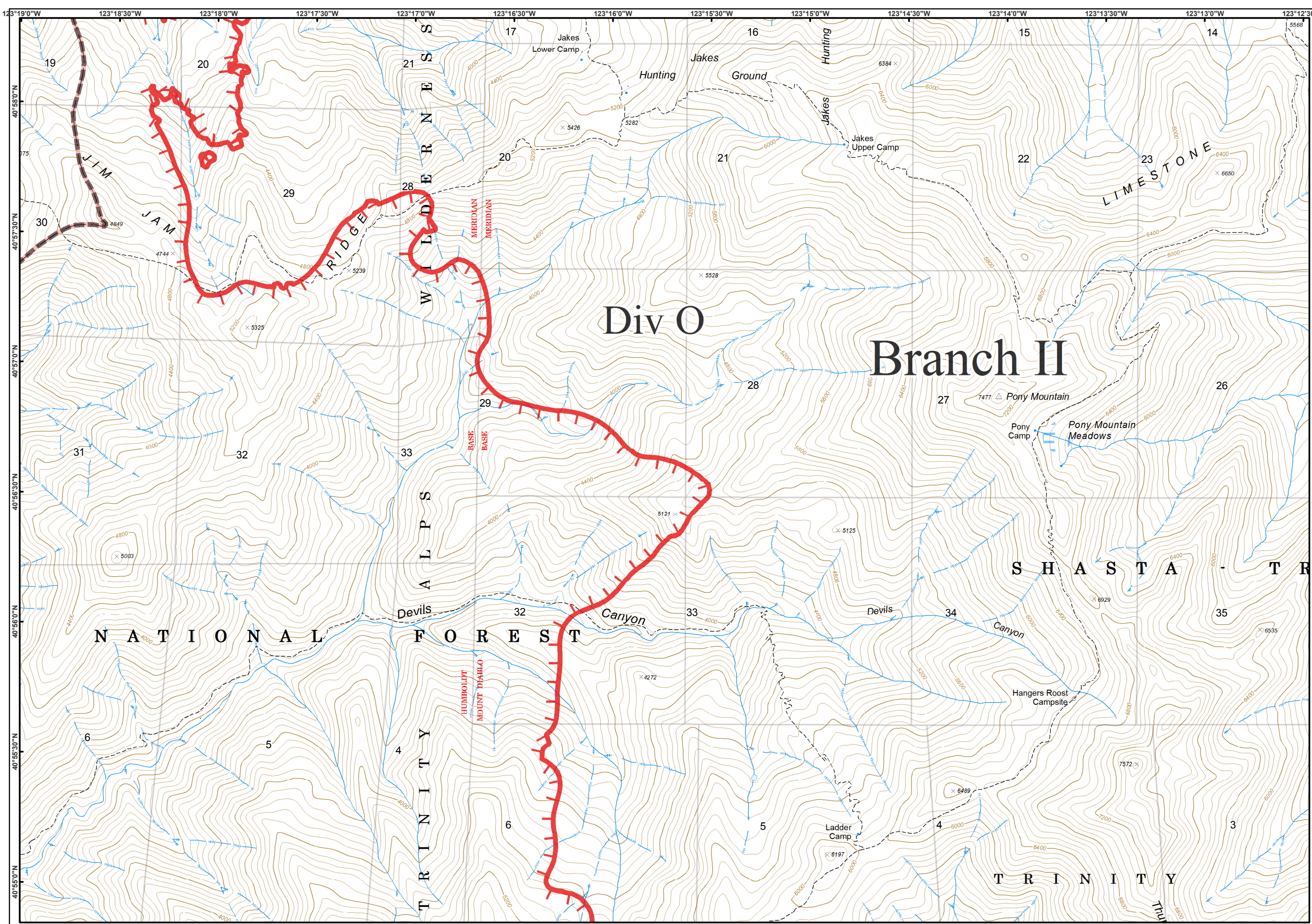
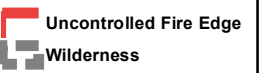
River Complex

CA-SHF-002066

08/31/2015

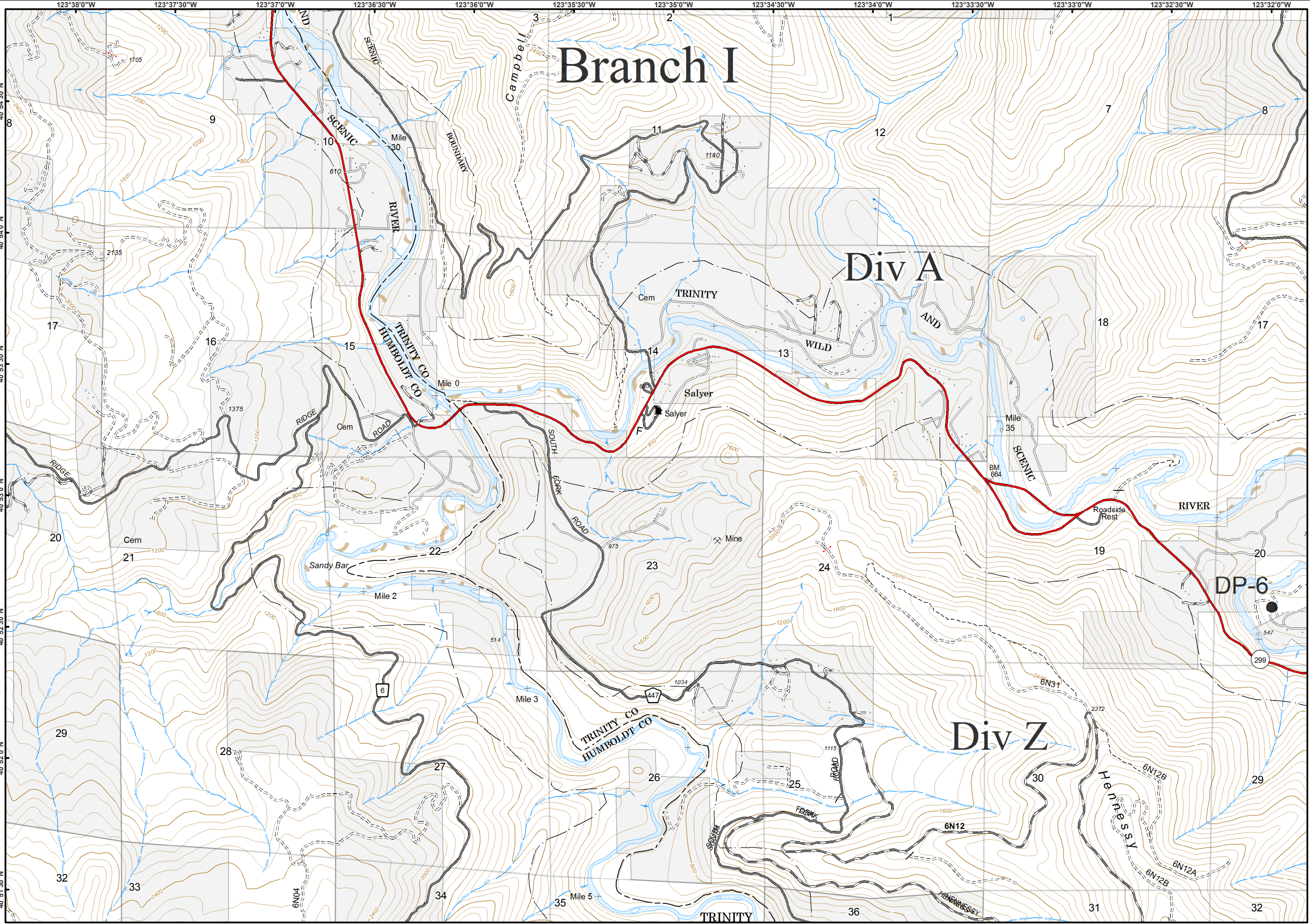
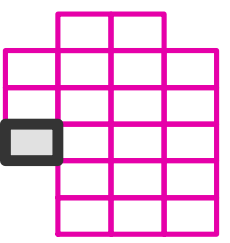
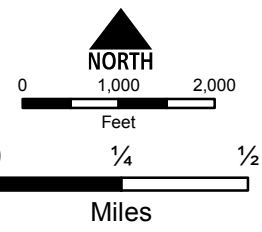


IAP Tiles
Page - 10





● Drop Point



Branch I

Div A

Div Z

DP-6

TRINITY

Haines St

Sandy Bar

TRINITY

WILD

Salyer

Salyer

Mine

447

6N12

6N12B

6N12A

6N12B

RIDGE

Cem

Mile 2

Mile 3

TRINITY CO
HUMBOLDT CO

Mile 5

Campbell

BOUNDARY

RIDGE

Cem

Mile 2

Mile 2

Mile 2

SOUTH FORK ROAD

SOUTH FORK ROAD

Mile 3

Mile 3

Mile 30

Mile 0

Mile 2

Mile 3

Mile 5

Mile 35

Mile 35

Mile 35

Mile 35

Mile 35

Mile 35

Mile 35

Mile 35

Mile 35

Mile 35

Mile 35

Mile 35

Mile 35

Mile 35

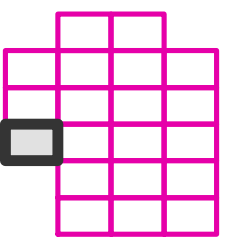
Mile 35

Mile 35



0 1,000 2,000
Feet

0 1/4 1/2
Miles



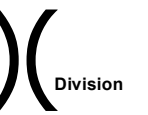
River Complex

CA-SHF-002066

08/31/2015



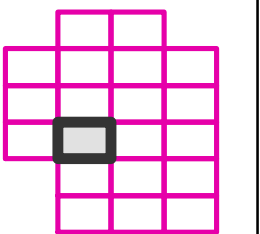
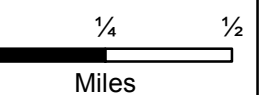
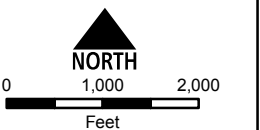
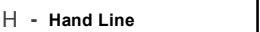
IAP Tiles
Page - 12



Division



Branch



Branch I

Div A

Div Z

Branch I

Div T

Happy Camp

Mountain

Trinity Village

RIVER

SCENIC

AND

SIX RIVERS NATIONAL FOREST

GRAY FALLS

DP-2

DP-1

DP-5

DP-4

H-5

Dailey

Mile 5

Hoboken

Bell Flat

SCENIC

Gray Ranch

Zeigler Point

Hawkins

Trinity

WILD

AND

SCENIC

Gray Ranch

GRAY FALLS

DP-2

DP-1

DP-5

DP-4

H-5

Dailey

Mile 5

Hoboken

Bell Flat

SCENIC

Gray Ranch

GRAY FALLS

River Complex

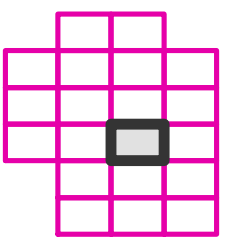
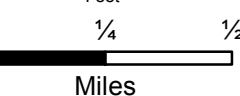
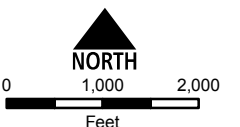
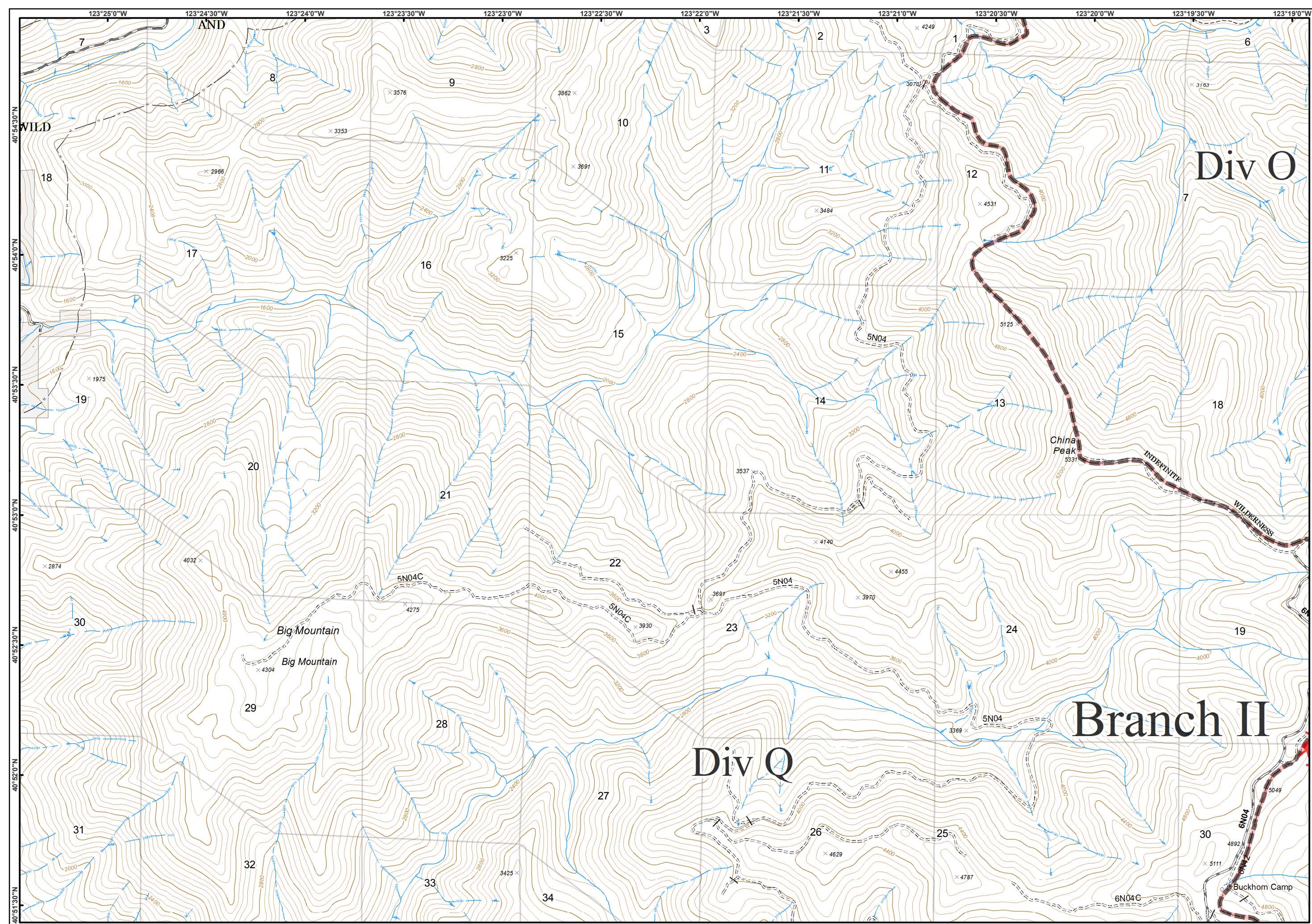
CA-SHF-002066

08/31/2015



IAP Tiles
Page - 13

Uncontrolled Fire Edge
Wilderness



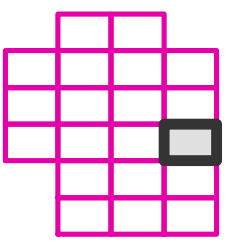
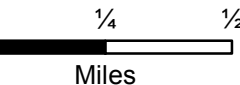
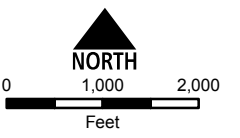
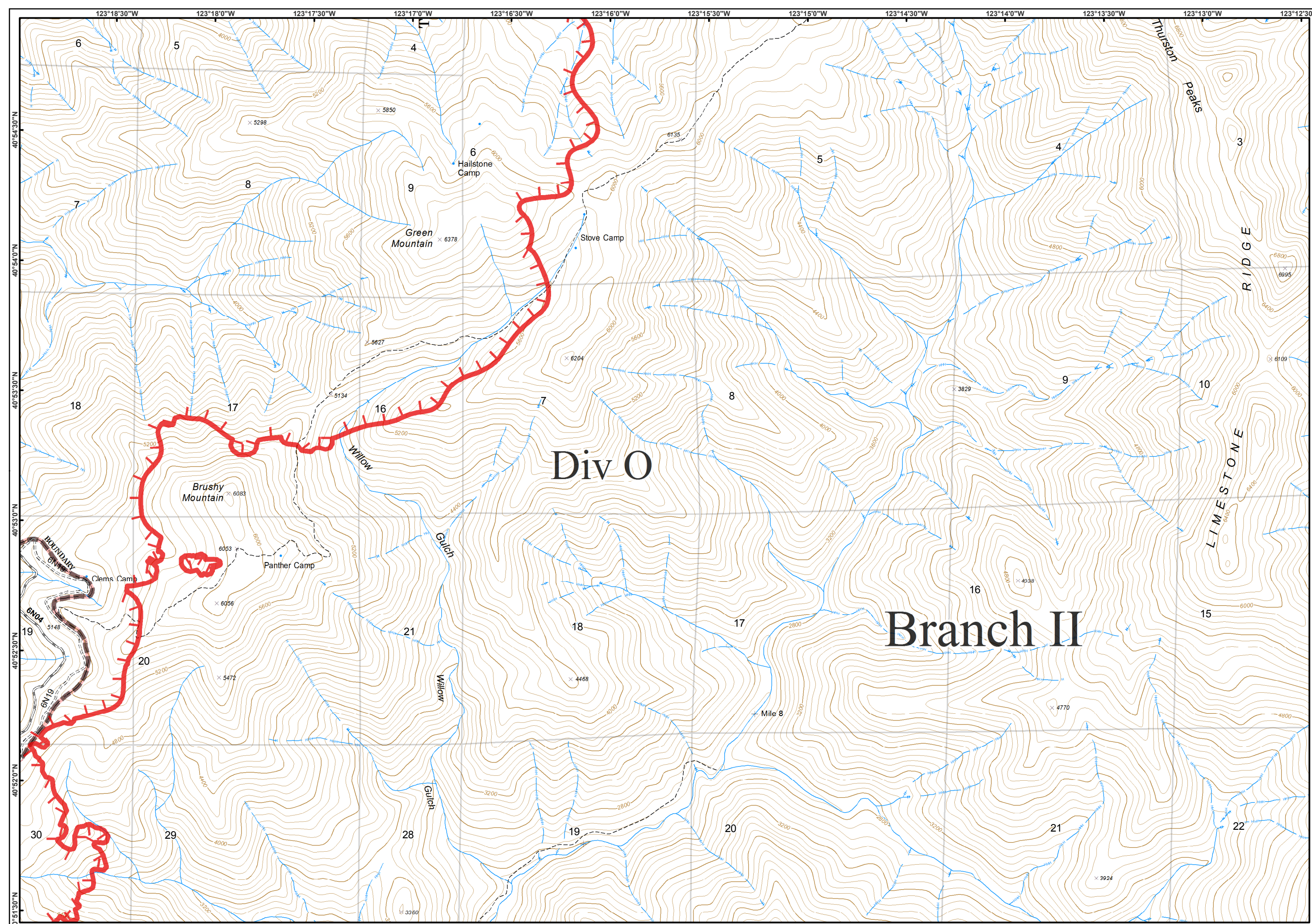
River Complex

CA-SHF-002066

08/31/2015

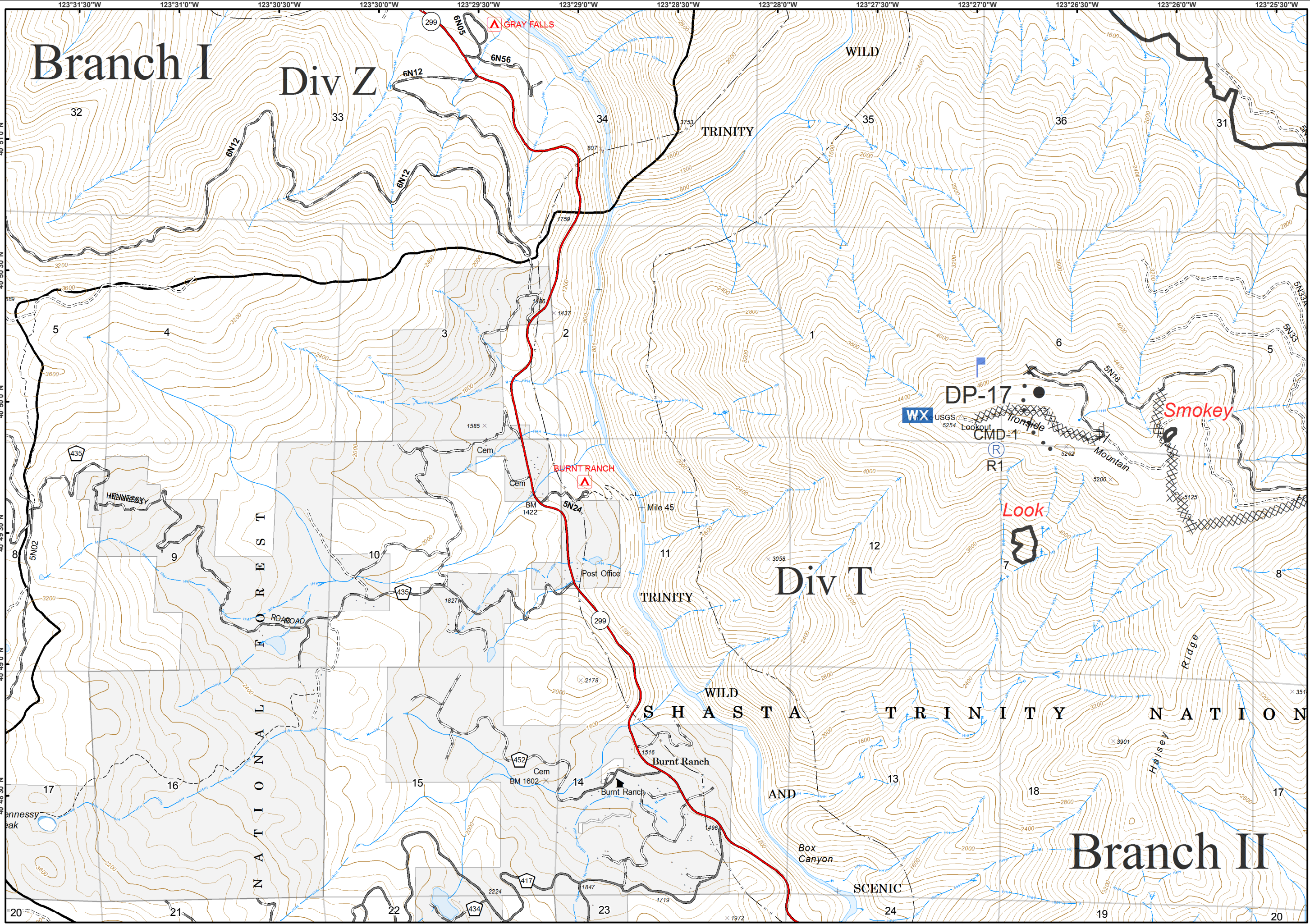
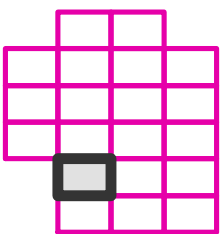
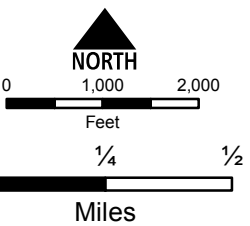


IAP Tiles
Page - 14



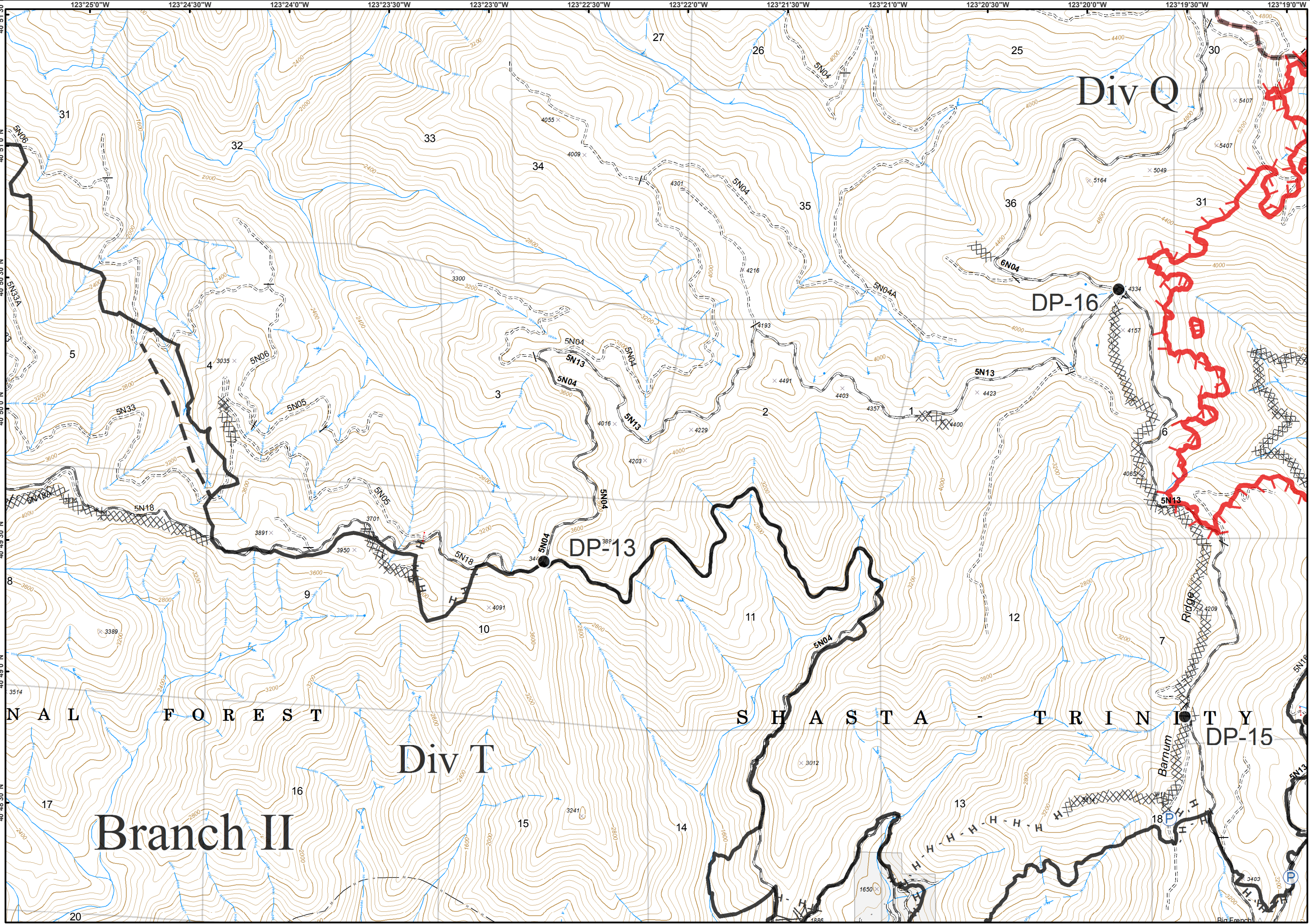
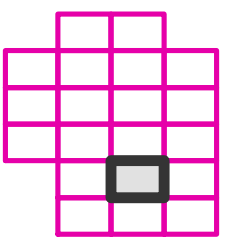
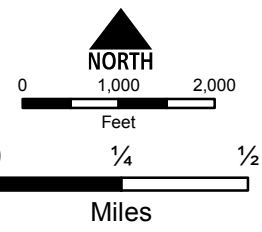


- Drop Point
- Lookout
- WX Mobile Weather Unit
- Ⓡ Repeater
- XXXX Completed Dozer Line
- Completed Line
- ✕ Proposed Dozer Line





- Drop Point
- Pump
- Uncontrolled Fire Edge
- Completed Dozer Line
- Completed Line
- Hand Line
- Line Break Completed
- Planned Fire Line
- Wilderness



River Complex

CA-SHF-002066

08/31/2015



IAP Tiles
Page - 18

● Drop Point

