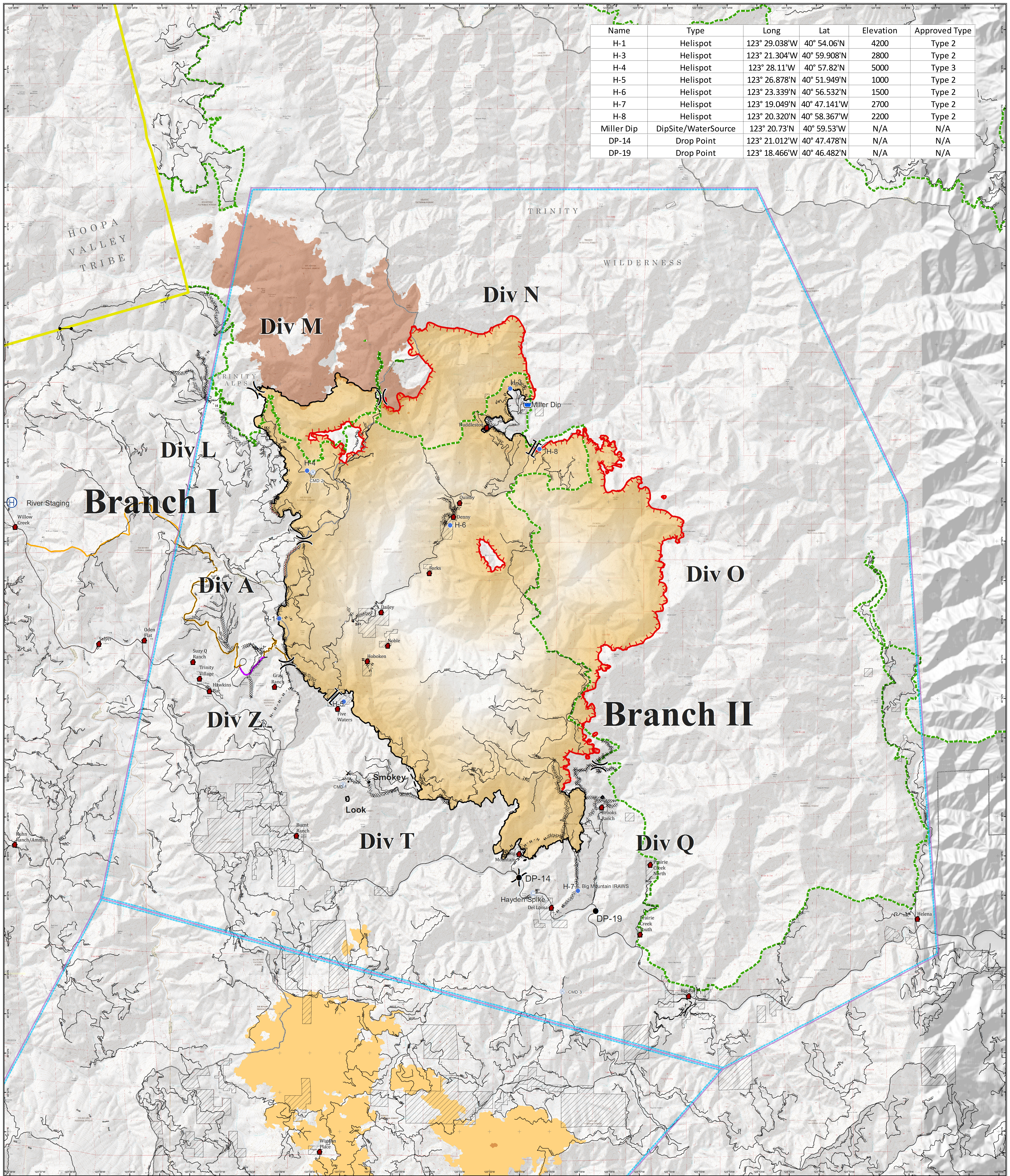


Name	Type	Long	Lat	Elevation	Approved Type
H-1	Helispot	123° 29.038'W	40° 54.06'N	4200	Type 2
H-3	Helispot	123° 21.304'W	40° 59.908'N	2800	Type 2
H-4	Helispot	123° 28.11'W	40° 57.82'N	5000	Type 3
H-5	Helispot	123° 26.878'W	40° 51.949'N	1000	Type 2
H-6	Helispot	123° 23.339'W	40° 56.532'N	1500	Type 2
H-7	Helispot	123° 19.049'W	40° 47.141'N	2700	Type 2
H-8	Helispot	123° 20.320'W	40° 58.367'W	2200	Type 2
Miller Dip	DipSite/WaterSource	123° 20.73'N	40° 59.53'W	N/A	N/A
DP-14	Drop Point	123° 21.012'W	40° 47.478'N	N/A	N/A
DP-19	Drop Point	123° 18.466'W	40° 46.482'N	N/A	N/A



# Air Operations

River Complex

CA-SHF-002066

09/03/2015



Branch	Helispot	Uncontrolled Fire Edge	Line Break Completed	Control Line to be Prepped	Towns	Wilderness
Division	Repeater	Completed Dozer Line	Planned Fire Line	Proposed Dozer Line	TFR North	National Forest Boundary
Camp	Retardant/Mud Pit	Completed Line	Proposed Dozer Line	K_Rail	Hoopa	2013 Corral Fire
Drop Point	Spot Fire	H - H - H - H - Hand Line	Road		Non Forest Service Ownership	South Complex

0 1 2 Miles