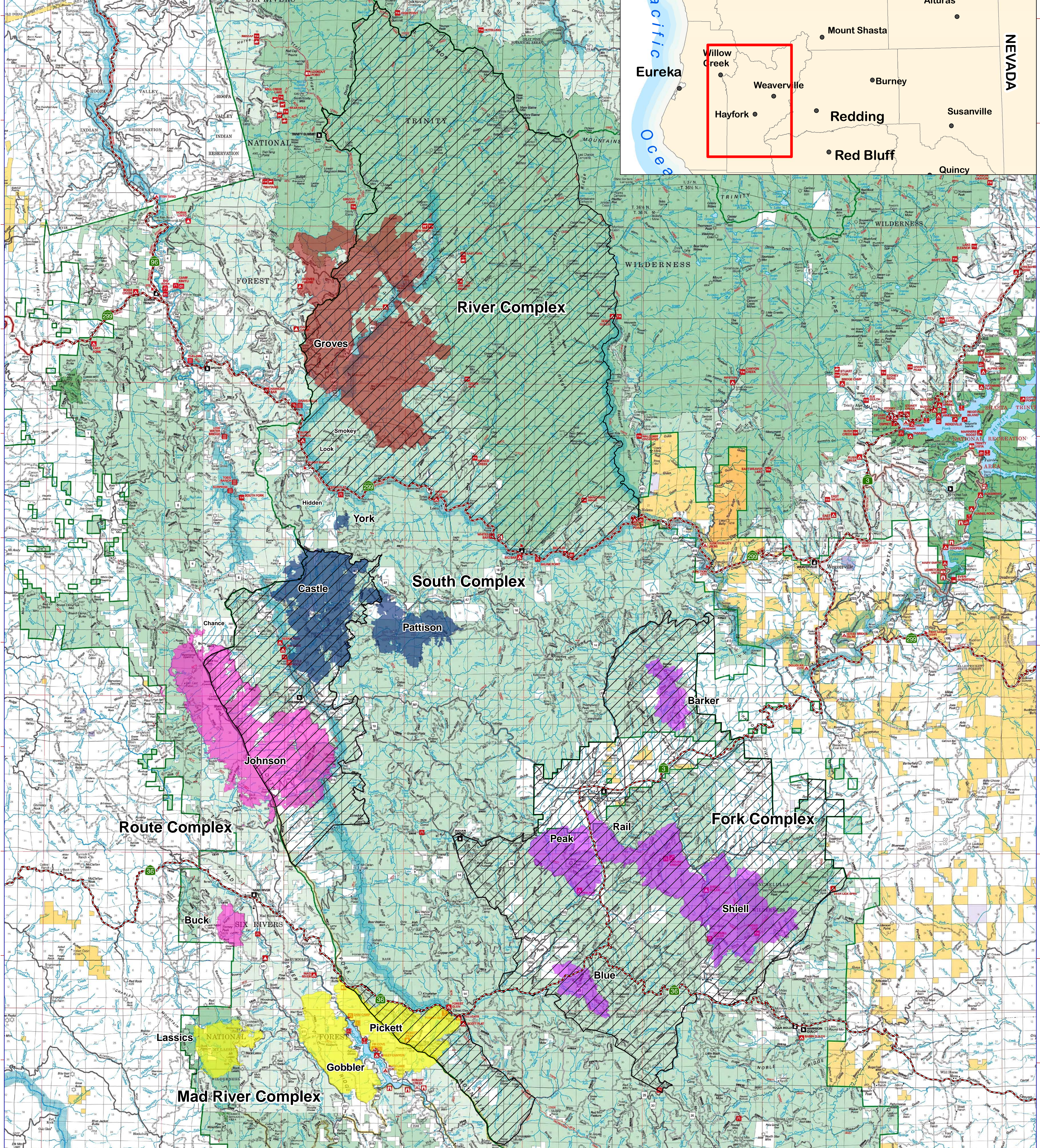


123°45'0"W 123°40'0"W 123°35'0"W 123°30'0"W 123°25'0"W 123°20'0"W 123°15'0"W 123°10'0"W 123°5'0"W 123°0'0"W 122°55'0"W 122°50'0"W 122°45'0"W



Shasta-Trinity & Six Rivers National Forest Fire Perimeter Map August 17th, 2015



Fire Perimeter

	River Complex 8/16/2015 2256 Hours (39,445 Acres)
	Fork Complex 8/16/2015 2256 Hours (33,356 Acres)
	South Complex 8/16/2015 2256 Hours (20,958 Acres)
	Route Complex 8/16/2015 2256 Hours (28,862 Acres)
	Mad River Complex 8/16/2015 2256 Hours (23,624 Acres)

Shasta-Trinity National Forest Closure Area*

State Highway

*Non-Forest Service lands are not subject to U.S. Forest Service Area Closure Orders. All Forest Service roads and facilities within closure areas are officially closed to the public.

N 0 5 10 Miles

Projection: UTM Zone 10N (NAD 83)

Disclaimer:

The Forest Service uses the most current and complete data available. GIS data and product accuracy may vary. Data may be developed from sources of differing accuracy, accurate only at certain scales, based on modeling or interpretation, incomplete while being created or revised. Using GIS products for purposes other than those for which they were created, may yield inaccurate or misleading results.

USDA is an equal opportunity provider, employer, and lender.



123°45'0"W 123°40'0"W 123°35'0"W 123°30'0"W 123°25'0"W 123°20'0"W 123°15'0"W 123°10'0"W 123°5'0"W 123°0'0"W 122°55'0"W 122°50'0"W 122°45'0"W

41°10'0"N 41°0'0"N 40°55'0"N 40°50'0"N 40°45'0"N 40°40'0"N 40°35'0"N 40°30'0"N 40°25'0"N 40°20'0"N 40°15'0"N

41°10'0"N 41°0'0"N 40°55'0"N 40°50'0"N 40°45'0"N 40°40'0"N 40°35'0"N 40°30'0"N 40°25'0"N 40°20'0"N 40°15'0"N