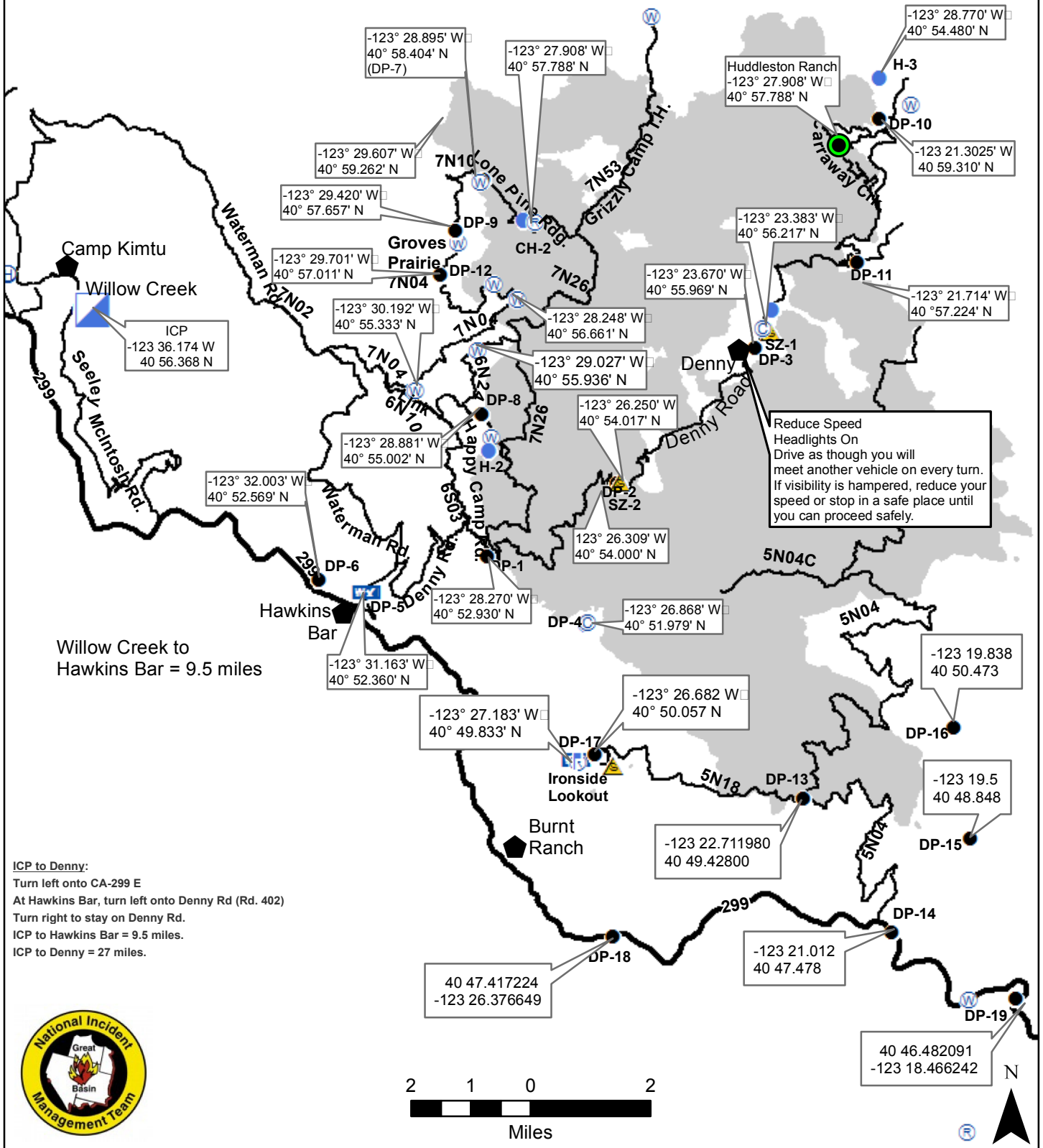


River Complex Transportation



ICP
-123 36.174 W
40 56.368 N

Willow Creek to
Hawkins Bar = 9.5 miles

Reduce Speed
Headlights On
Drive as though you will
meet another vehicle on every turn.
If visibility is hampered, reduce your
speed or stop in a safe place until
you can proceed safely.

ICP to Denny:
Turn left onto CA-299 E
At Hawkins Bar, turn left onto Denny Rd (Rd. 402)
Turn right to stay on Denny Rd.
ICP to Hawkins Bar = 9.5 miles.
ICP to Denny = 27 miles.

