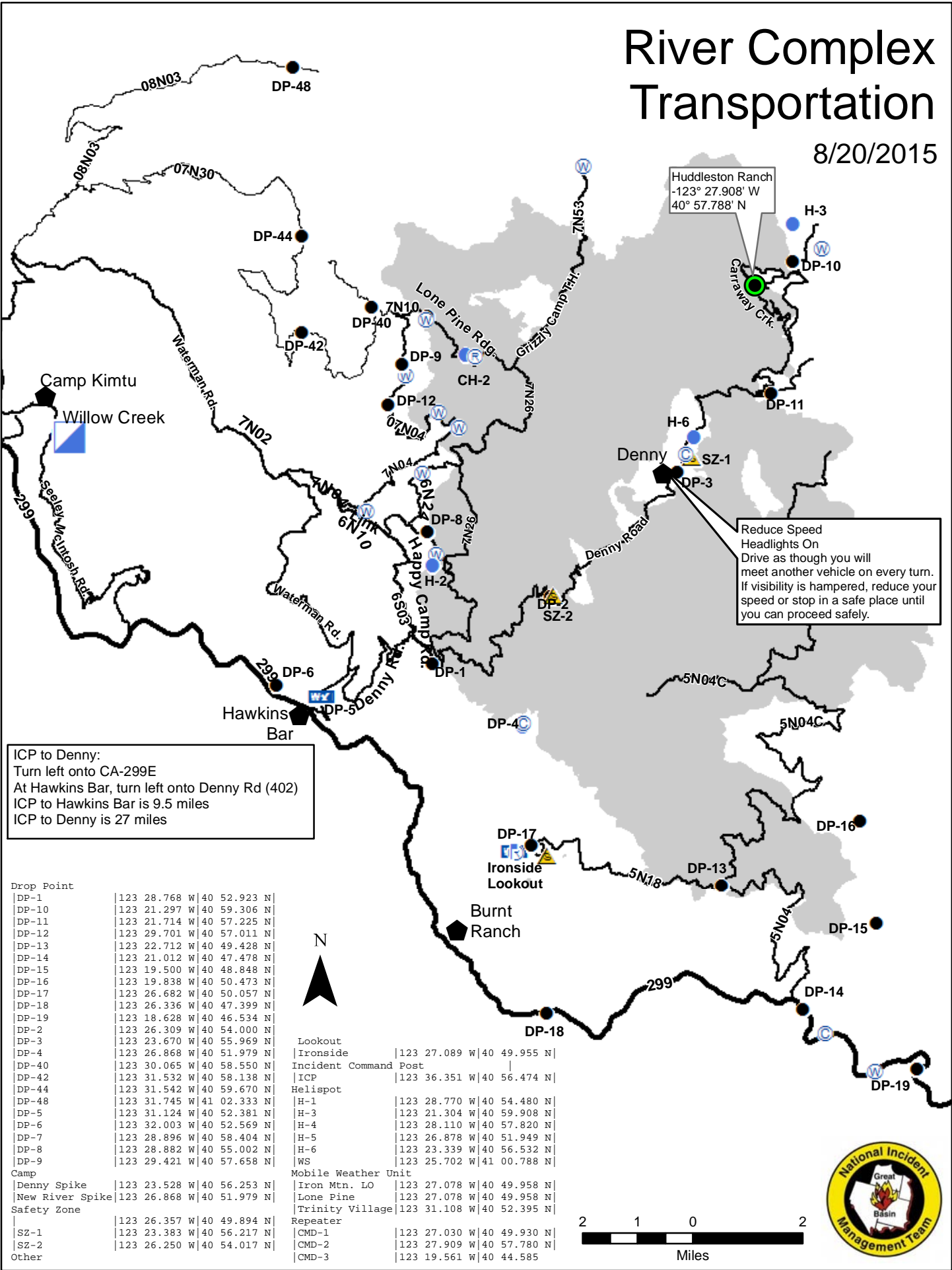


River Complex Transportation

8/20/2015



Huddleston Ranch
 -123° 27.908' W
 40° 57.788' N

Reduce Speed
 Headlights On
 Drive as though you will meet another vehicle on every turn.
 If visibility is hampered, reduce your speed or stop in a safe place until you can proceed safely.

ICP to Denny:
 Turn left onto CA-299E
 At Hawkins Bar, turn left onto Denny Rd (402)
 ICP to Hawkins Bar is 9.5 miles
 ICP to Denny is 27 miles

Drop Point	123	28.768	W	40	52.923	N
DP-1	123	21.297	W	40	59.306	N
DP-10	123	21.714	W	40	57.225	N
DP-11	123	29.701	W	40	57.011	N
DP-12	123	22.712	W	40	49.428	N
DP-13	123	21.012	W	40	47.478	N
DP-14	123	19.500	W	40	48.848	N
DP-15	123	19.838	W	40	50.473	N
DP-16	123	26.682	W	40	50.057	N
DP-17	123	26.336	W	40	47.399	N
DP-18	123	18.628	W	40	46.534	N
DP-19	123	26.309	W	40	54.000	N
DP-2	123	23.670	W	40	55.969	N
DP-3	123	26.868	W	40	51.979	N
DP-4	123	30.065	W	40	58.550	N
DP-40	123	31.532	W	40	58.138	N
DP-42	123	31.542	W	40	59.670	N
DP-44	123	31.745	W	41	02.333	N
DP-48	123	31.124	W	40	52.381	N
DP-5	123	32.003	W	40	52.569	N
DP-6	123	28.896	W	40	58.404	N
DP-7	123	28.882	W	40	55.002	N
DP-8	123	29.421	W	40	57.658	N
DP-9	123	23.528	W	40	56.253	N
Camp	123	26.868	W	40	51.979	N
Denny Spike	123	26.357	W	40	49.894	N
New River Spike	123	23.383	W	40	56.217	N
Safety Zone	123	26.250	W	40	54.017	N
SZ-1	123	27.078	W	40	49.958	N
SZ-2	123	27.909	W	40	57.780	N
Other	123	19.561	W	40	44.585	N

Lookout	123	27.089	W	40	49.955	N
Ironsides	123	36.351	W	40	56.474	N
Incident Command Post						
ICP	123	36.351	W	40	56.474	N
Helispot						
H-1	123	28.770	W	40	54.480	N
H-3	123	21.304	W	40	59.908	N
H-4	123	28.110	W	40	57.820	N
H-5	123	26.878	W	40	51.949	N
H-6	123	23.339	W	40	56.532	N
WS	123	25.702	W	41	00.788	N
Mobile Weather Unit						
Iron Mtn. LO	123	27.078	W	40	49.958	N
Lone Pine	123	27.078	W	40	49.958	N
Trinity Village	123	31.108	W	40	52.395	N
Repeater						
CMD-1	123	27.030	W	40	49.930	N
CMD-2	123	27.909	W	40	57.780	N
CMD-3	123	19.561	W	40	44.585	N

