










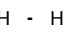
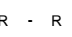


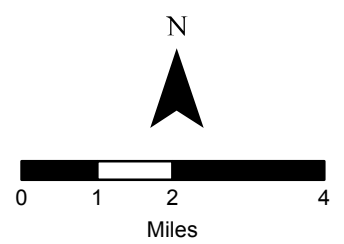
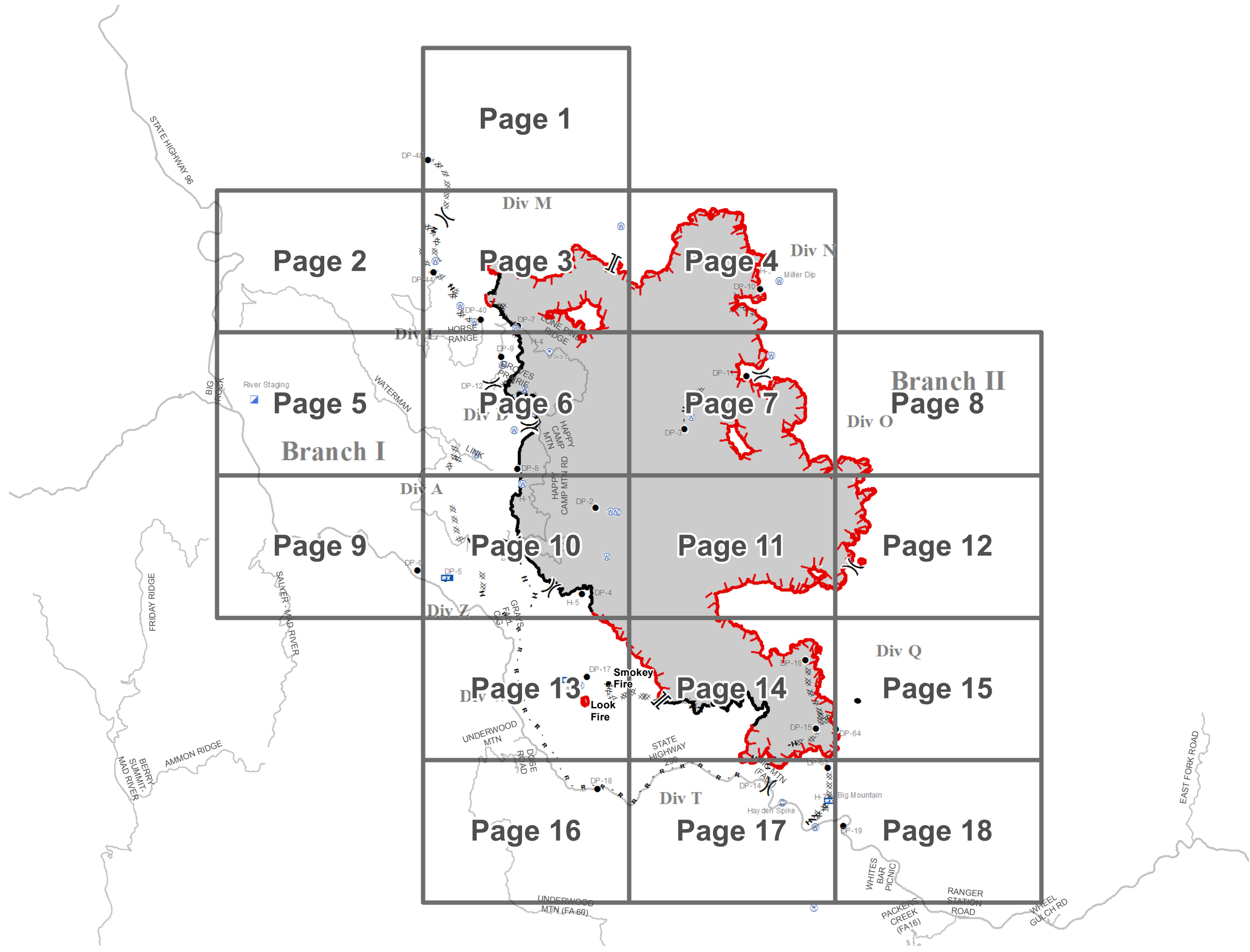
**River Complex
CA-SHF-2066**

August 25, 2015



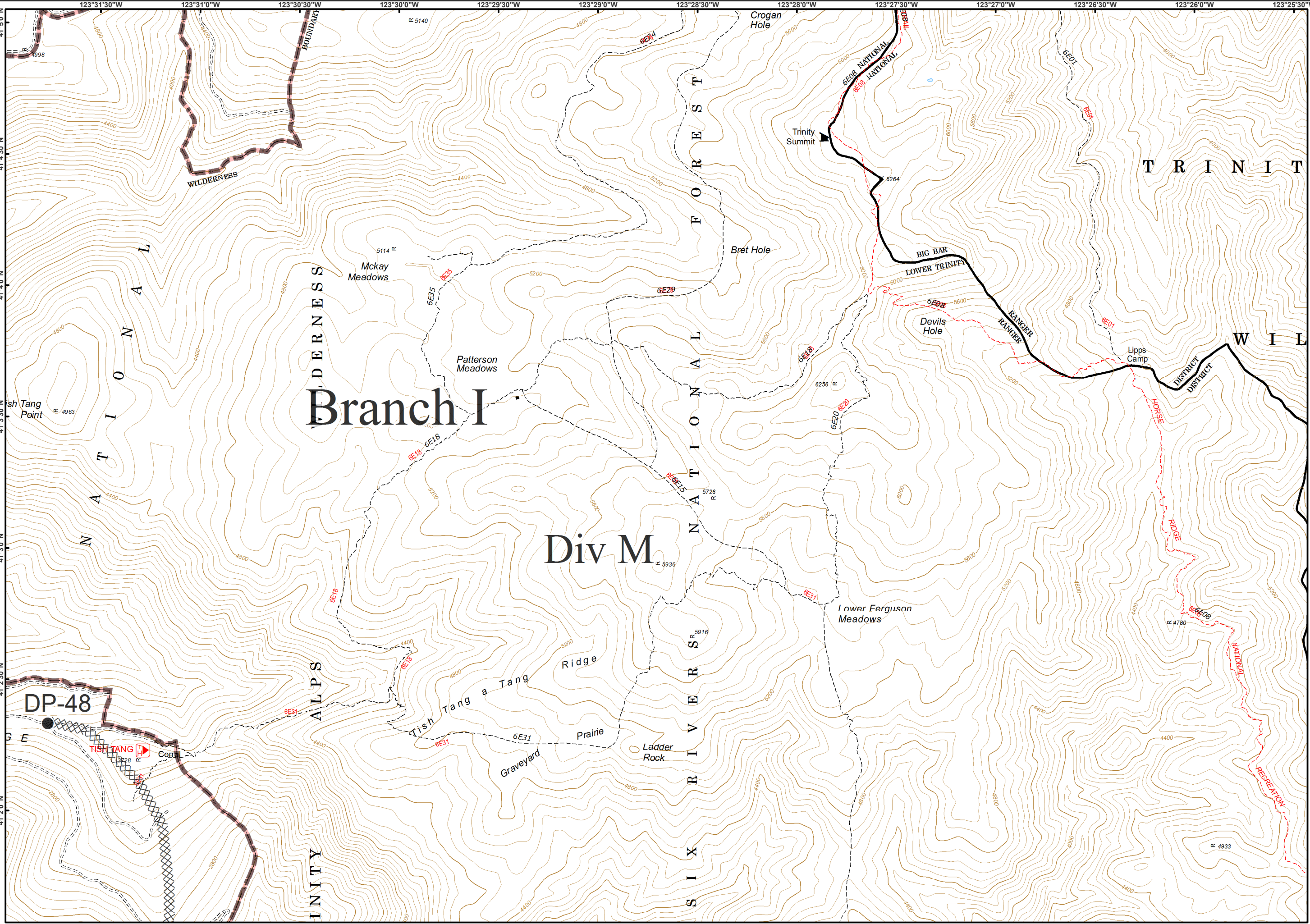
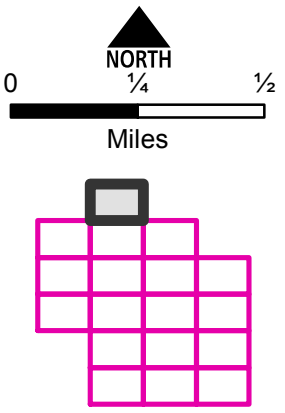
IAP Index

-  Branch
-  Division
-  Camp
-  Drop Point
-  Incident Command Post
-  Mobile Weather Unit
-  Repeater
-  Water Source
-  Uncontrolled Fire Edge
-  Completed Dozer Line
-  Completed Line
-  Hand Line
-  River as Natural Fire Break





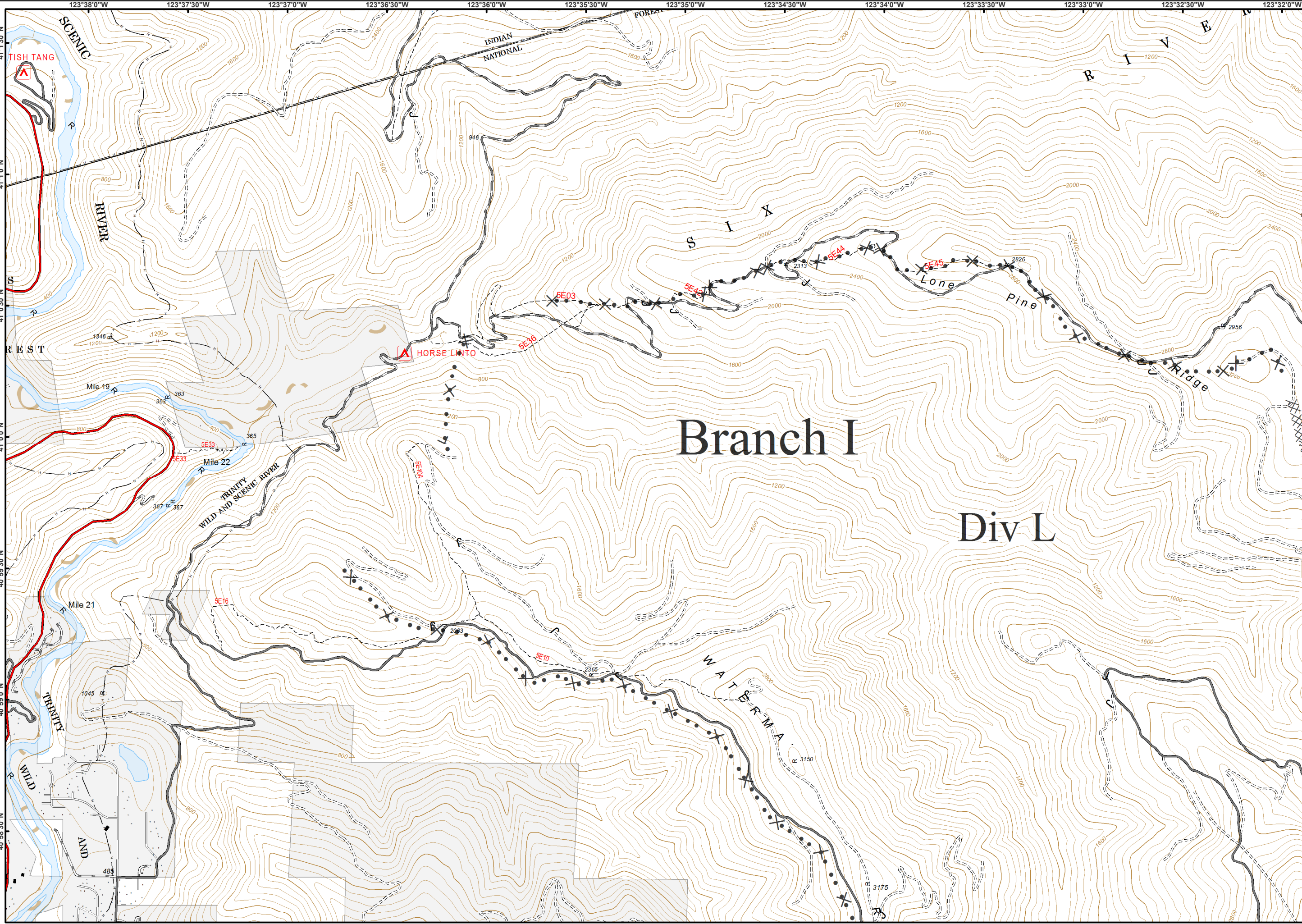
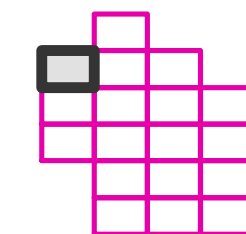
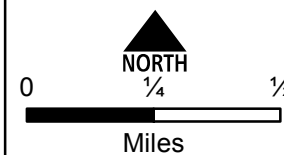
- Drop Point
- XXXX Completed Dozer Line
- W Wilderness

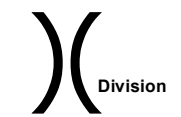




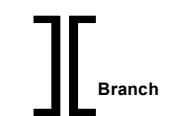
XXXX Completed Dozer Line

X • Proposed Dozer Line





Division



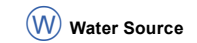
Branch



Drop Point



Pump



Water Source



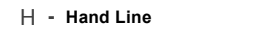
Uncontrolled Fire Edge



Completed Dozer Line



Completed Line



H - Hand Line



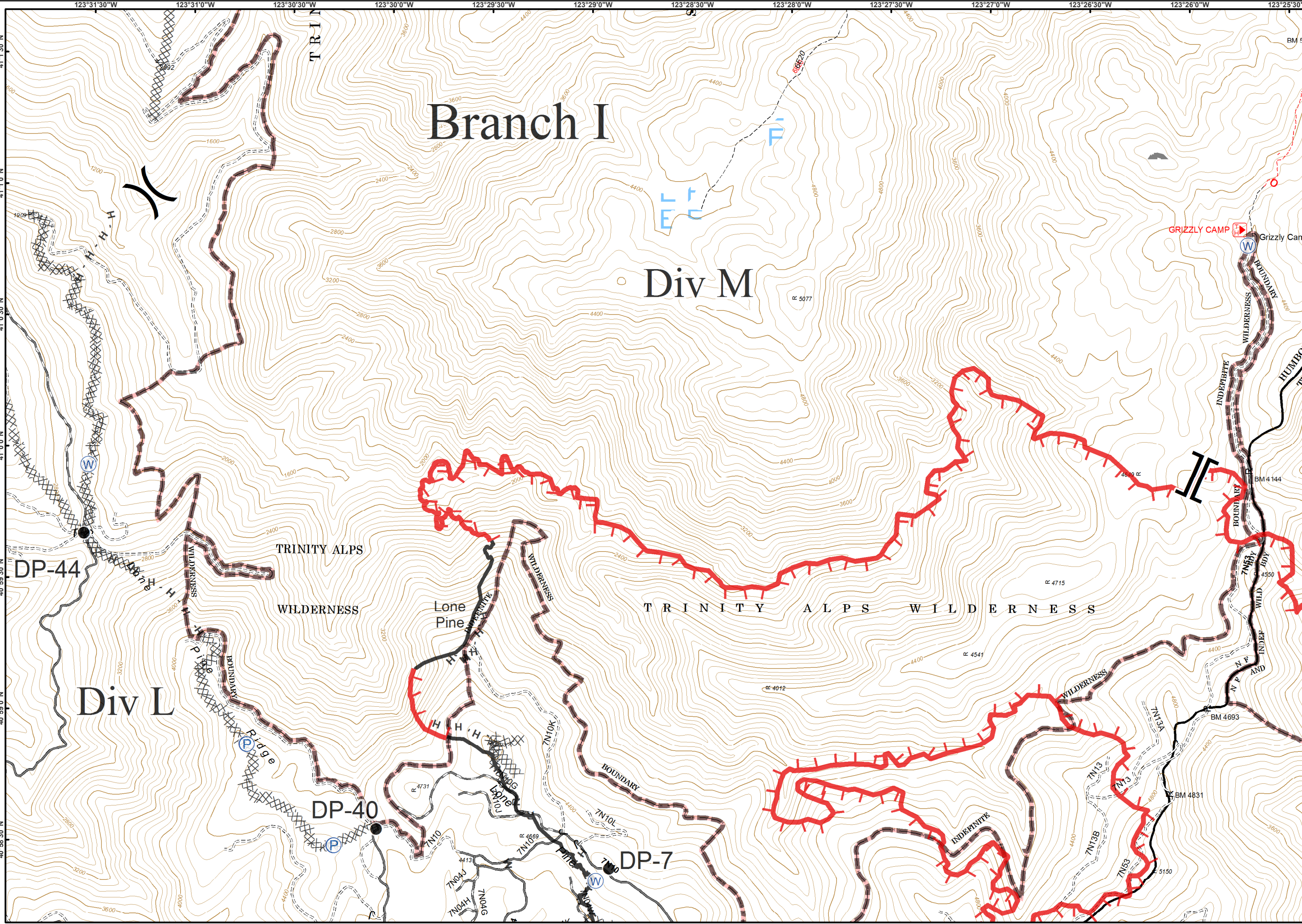
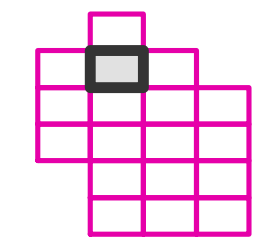
R - Road as Completed Line



Wilderness

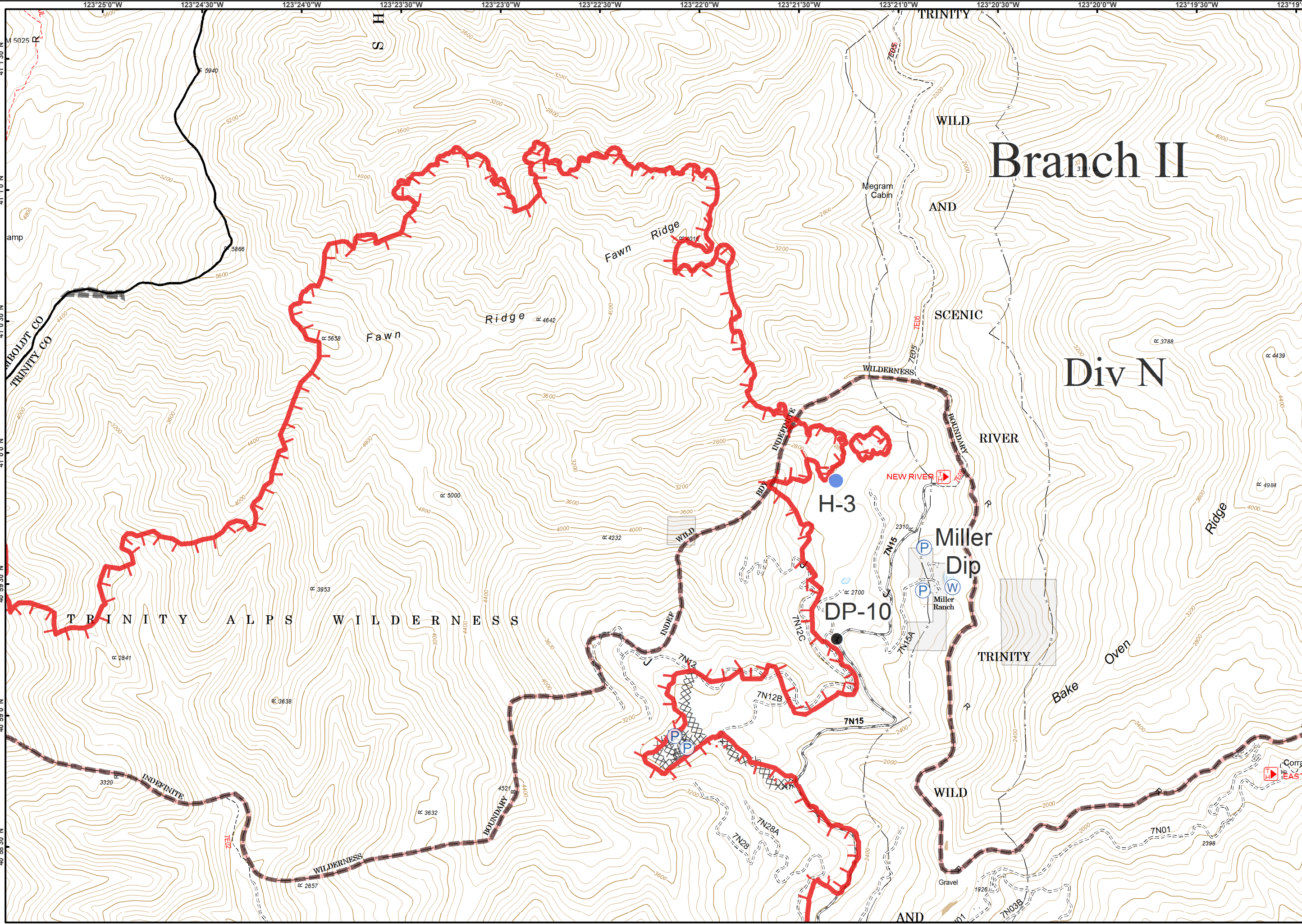
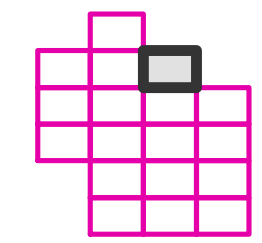
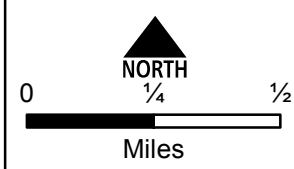


Miles



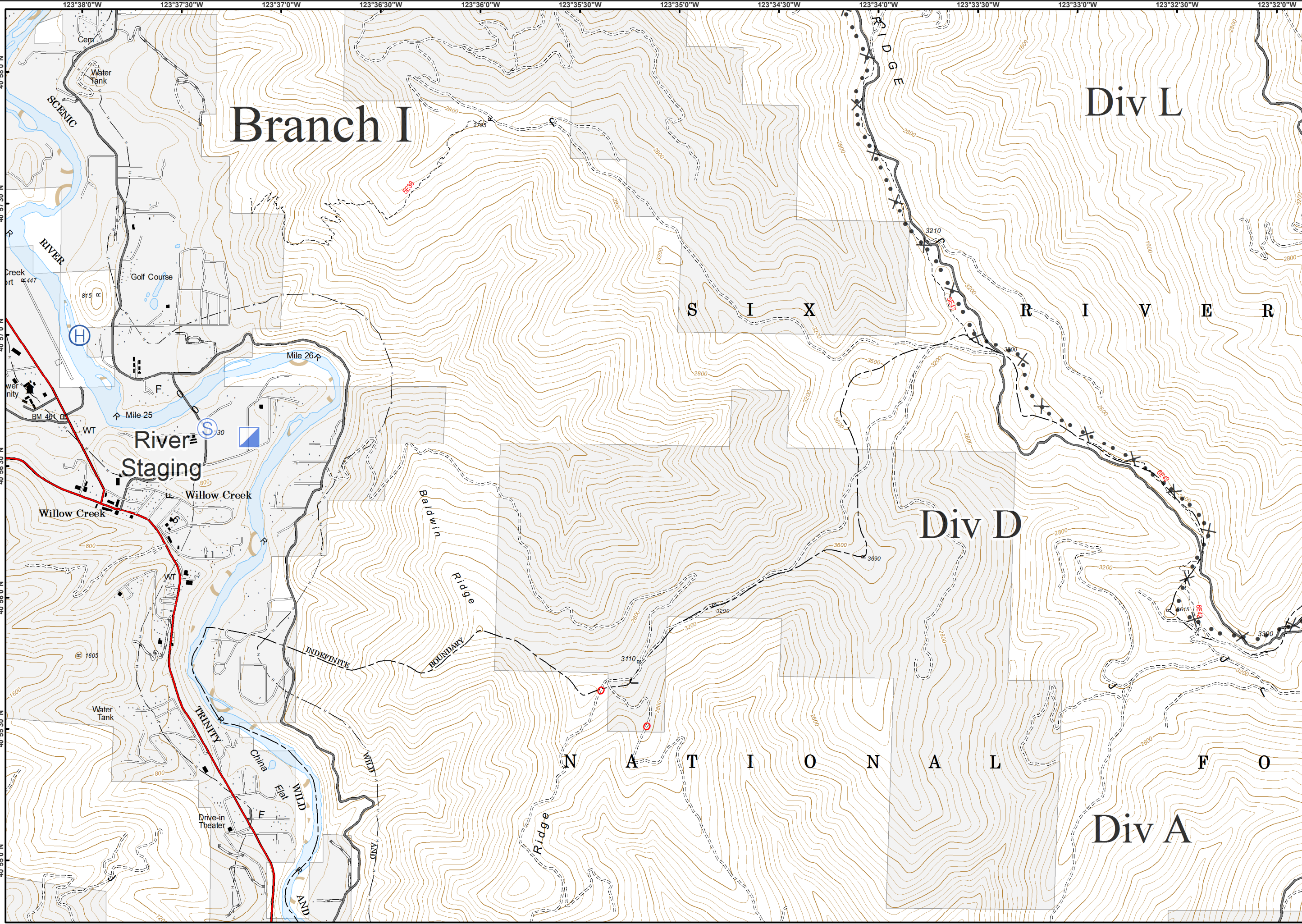
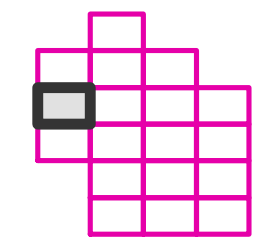
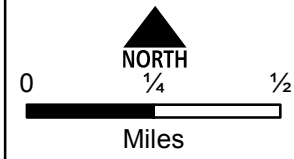


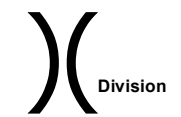
- Drop Point
- Helispot
- P Pump
- W Water Source
- Uncontrolled Fire Edge
- Completed Dozer Line
- Wilderness



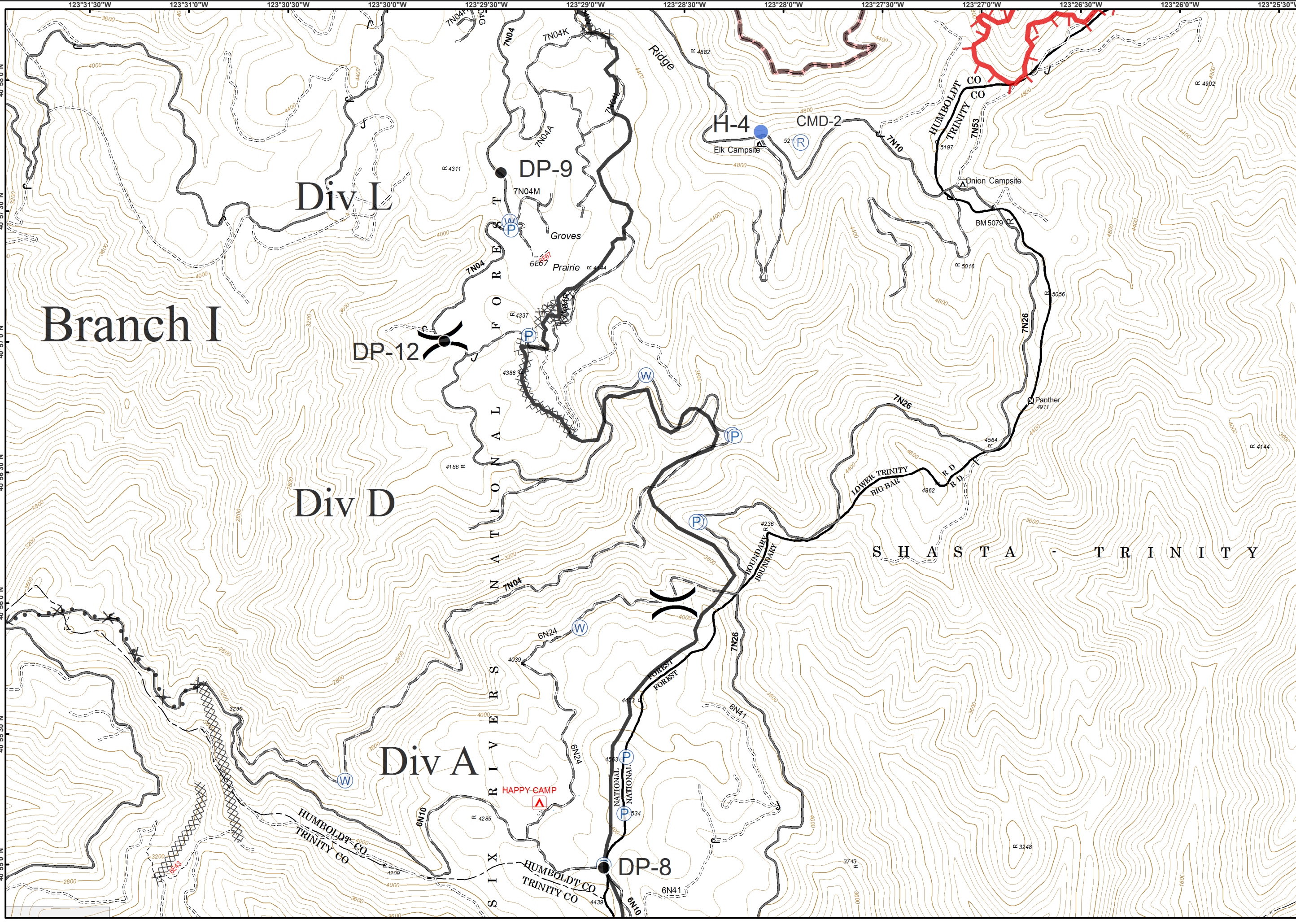
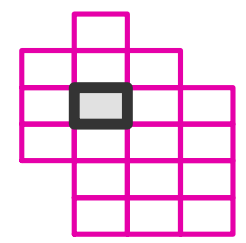
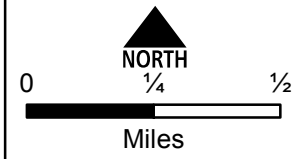


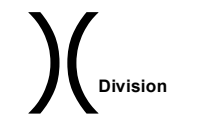
- Helibase
- Incident Command Post
- Staging Area
- Proposed Dozer Line



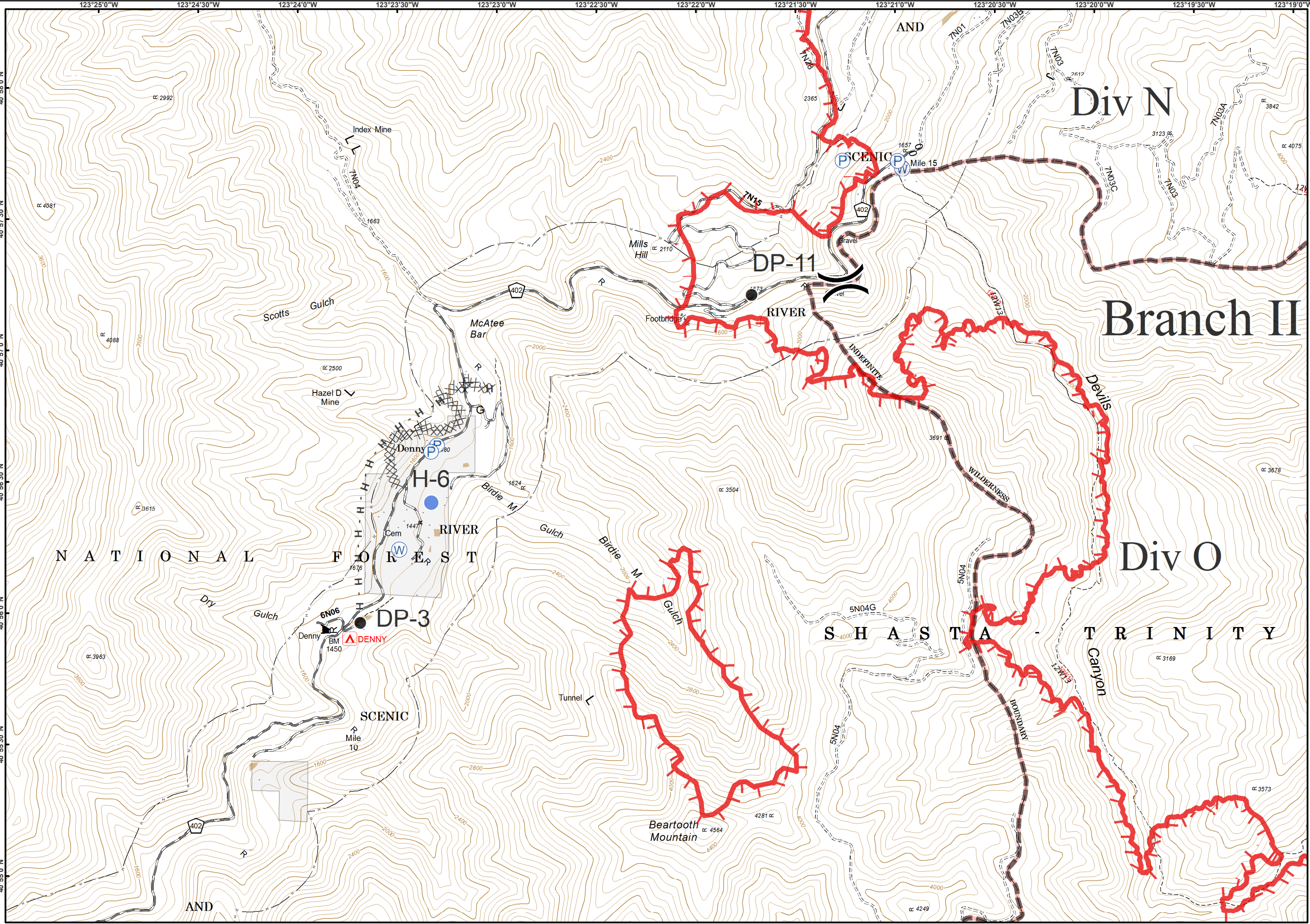
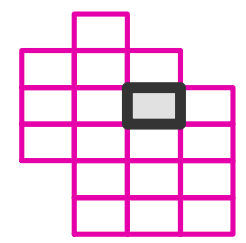
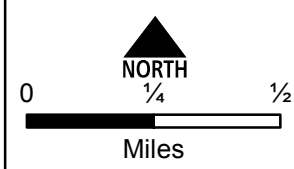


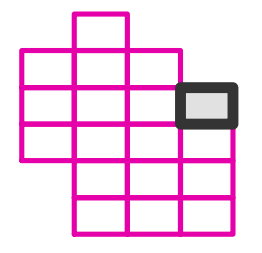
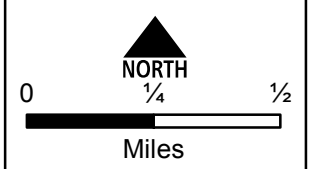
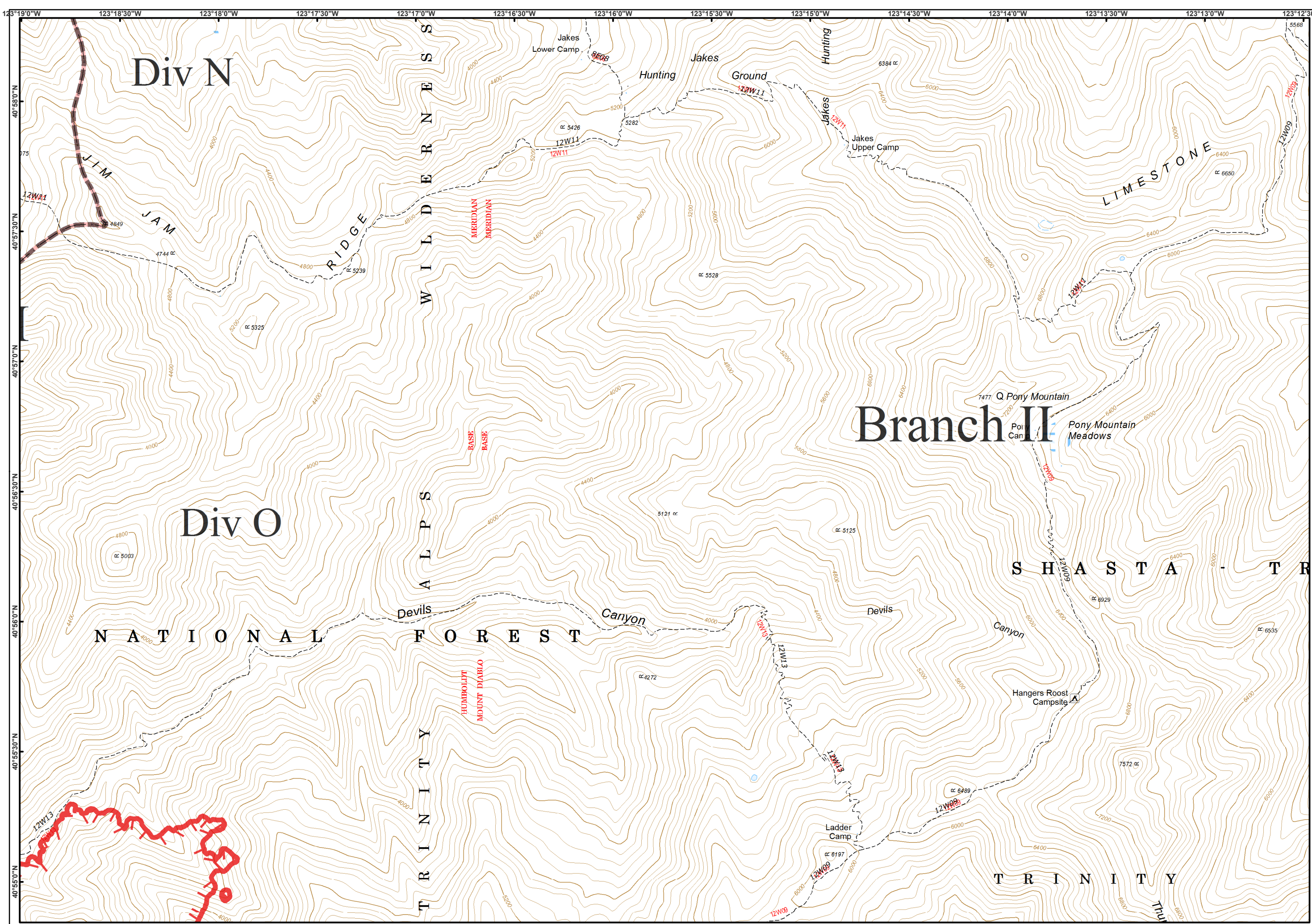
- Drop Point
- Helispot
- P Pump
- R Repeater
- W Water Source
- Uncontrolled Fire Edge
- Completed Dozer Line
- Completed Line
- H Hand Line
- Proposed Dozer Line
- Wilderness





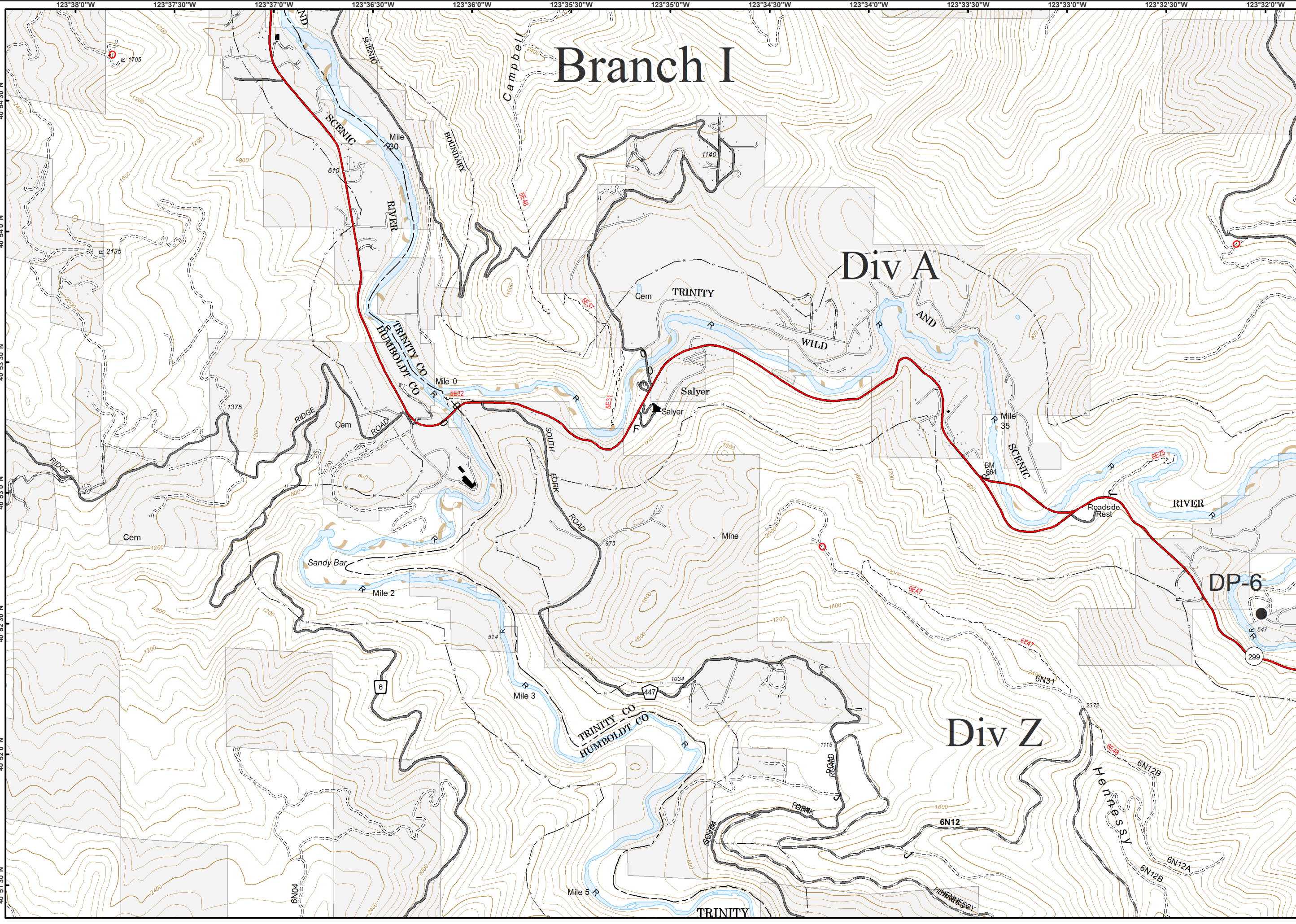
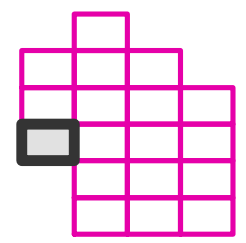
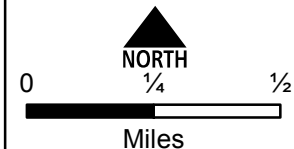
- Drop Point
- Helispot
- Pump
- Water Source
- Uncontrolled Fire Edge
- Completed Dozer Line
- Hand Line
- Wilderness





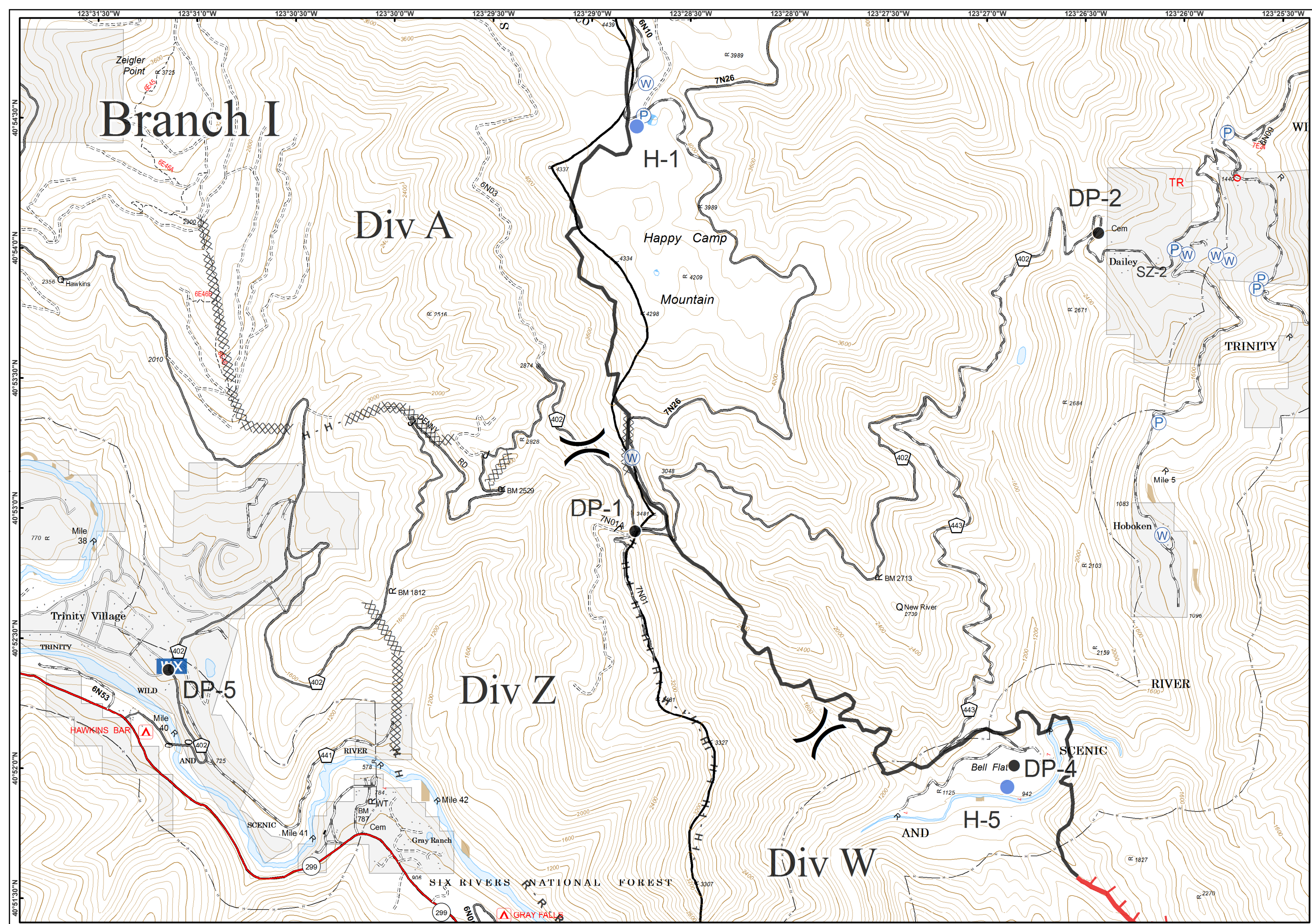
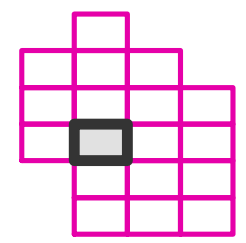
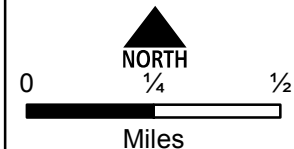


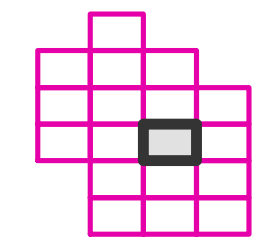
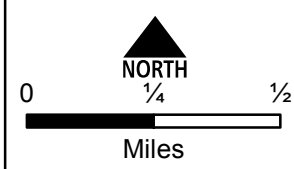
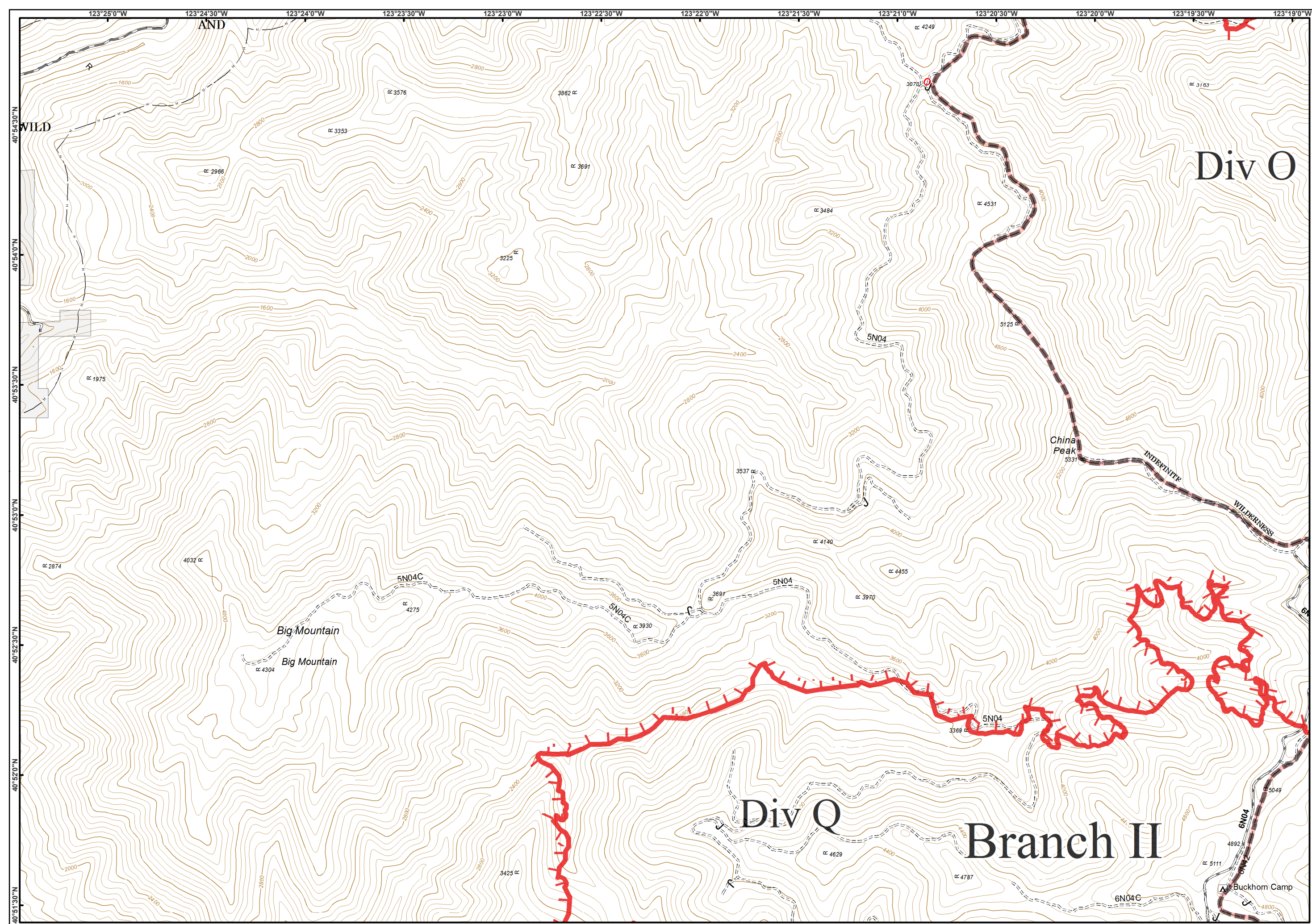
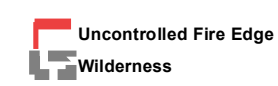
● Drop Point

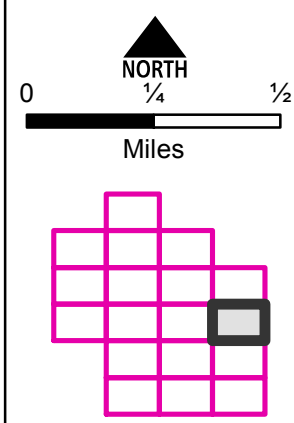
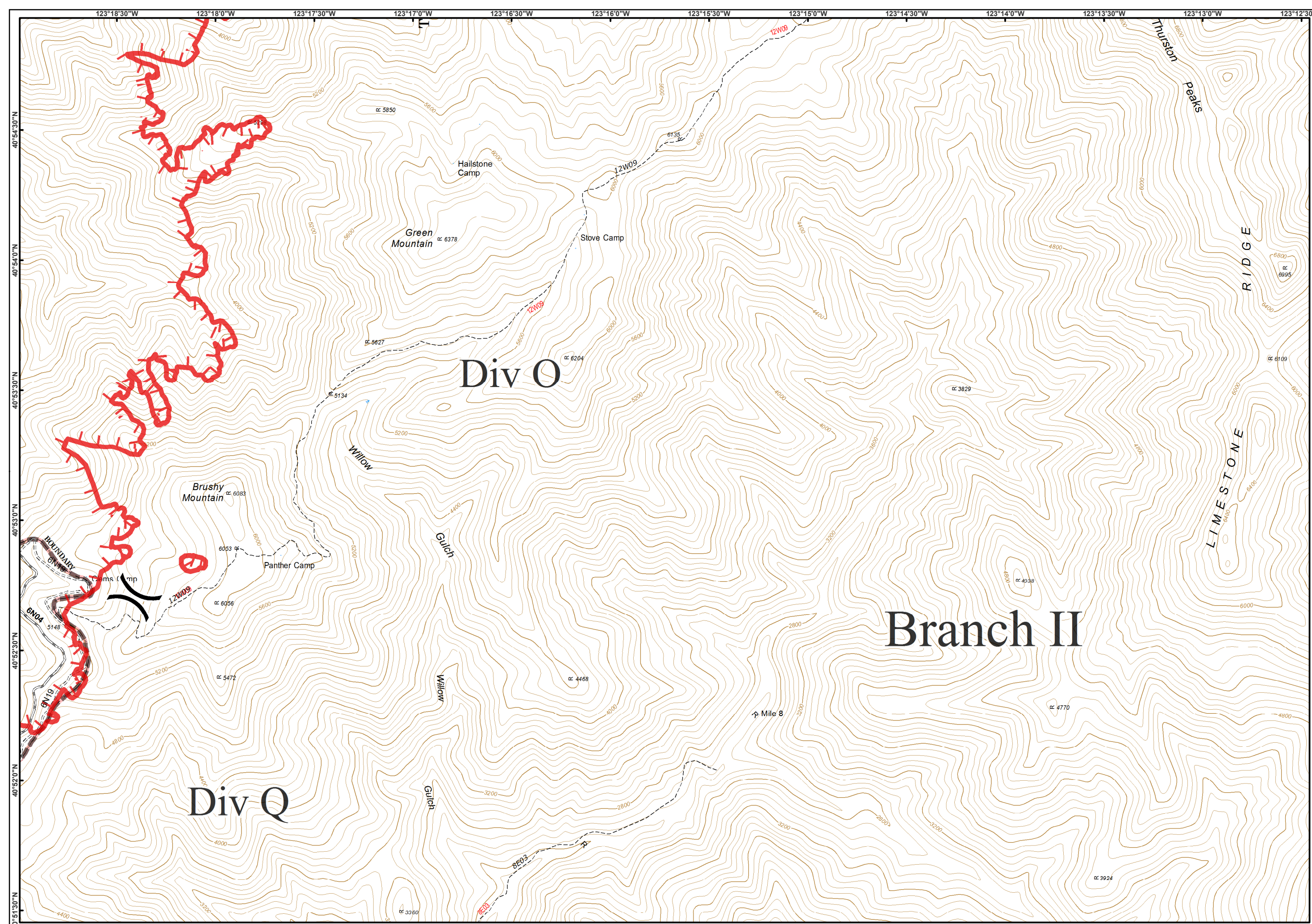
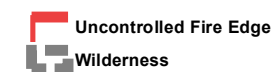
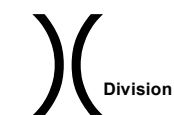




- Division
- Drop Point
- Helispot
- Mobile Weather Unit
- Pump
- Water Source
- Uncontrolled Fire Edge
- Completed Dozer Line
- Completed Line
- Hand Line
- Road as Completed Line

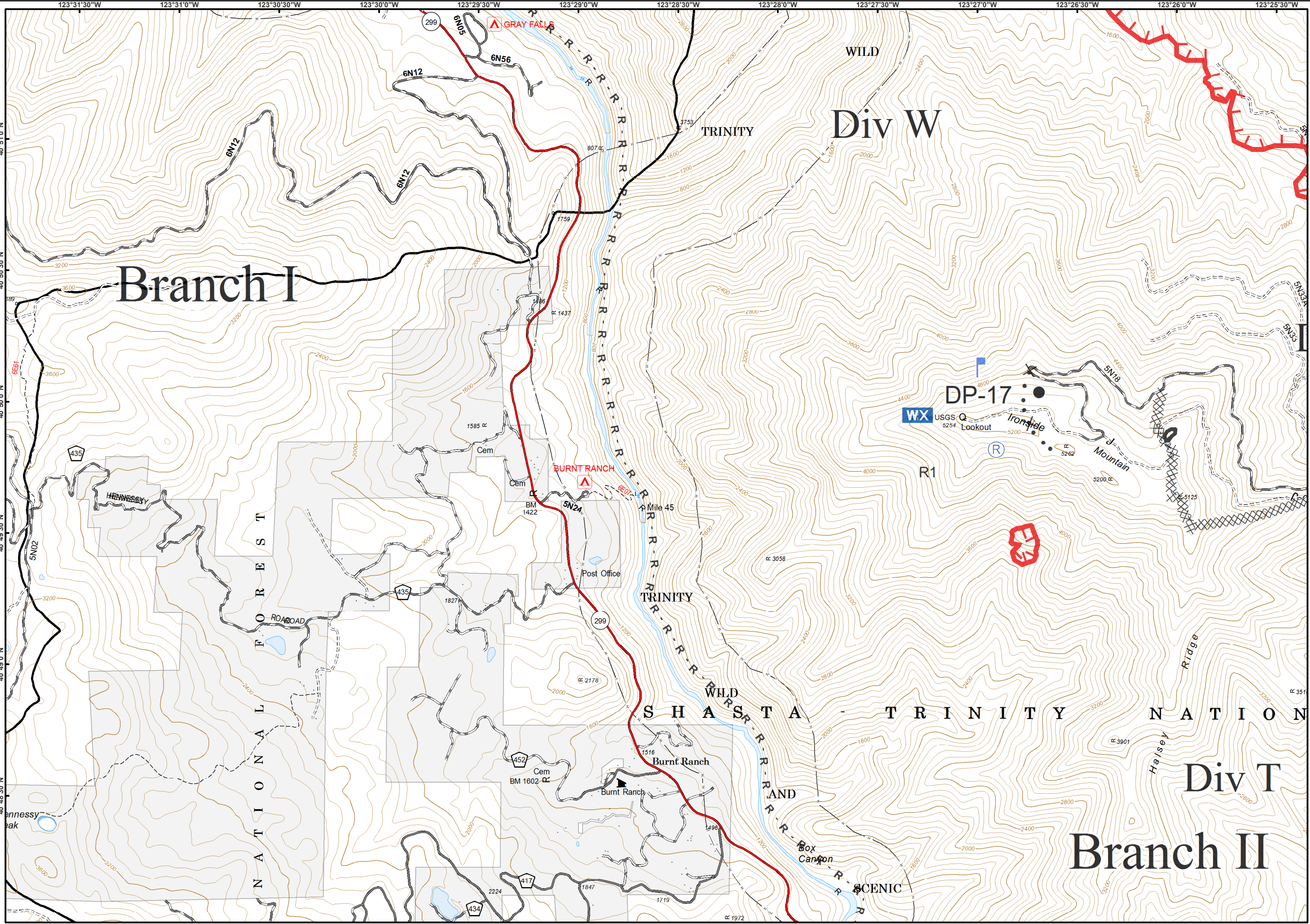
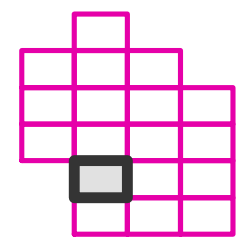
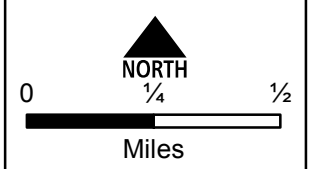






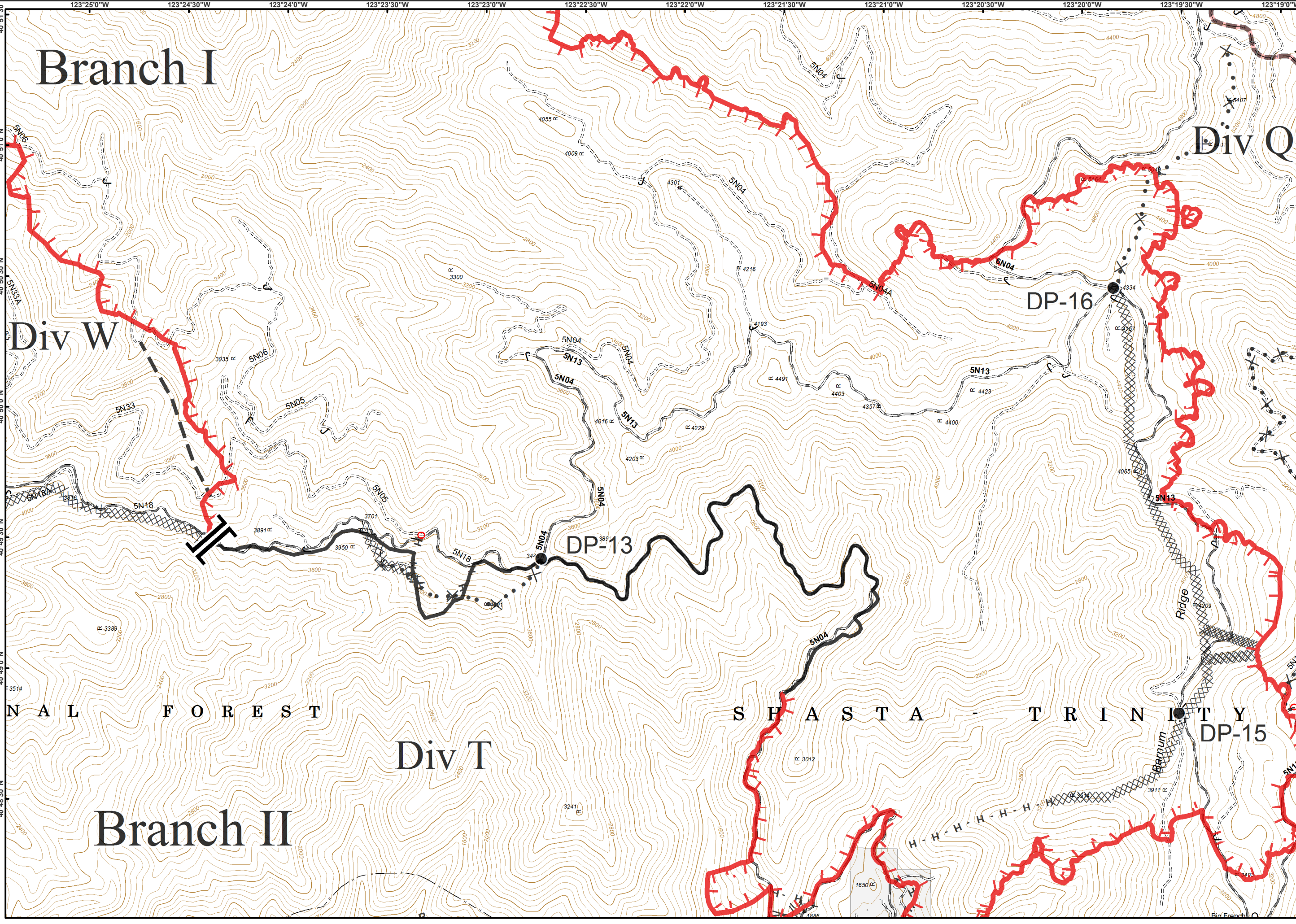
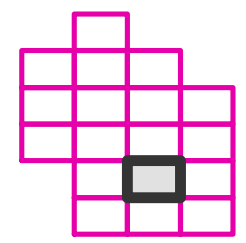
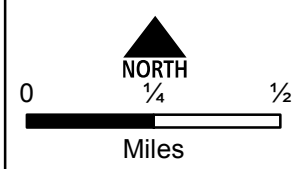


- Drop Point
- └ Lookout
- WX Mobile Weather Unit
- Ⓡ Repeater
- ▬ Uncontrolled Fire Edge
- ▨ Completed Dozer Line
- ▬ Completed Line
- R - Road as Completed Line
- ✂ • Proposed Dozer Line





- Drop Point
- Uncontrolled Fire Edge
- Completed Dozer Line
- Completed Line
- H - Hand Line
- R - Road as Completed Line
- Line Break Completed
- Planned Fire Line
- Proposed Dozer Line
- Wilderness



Branch I

Div W

Div Q

DP-16

DP-13

DP-15

N A L F O R E S T

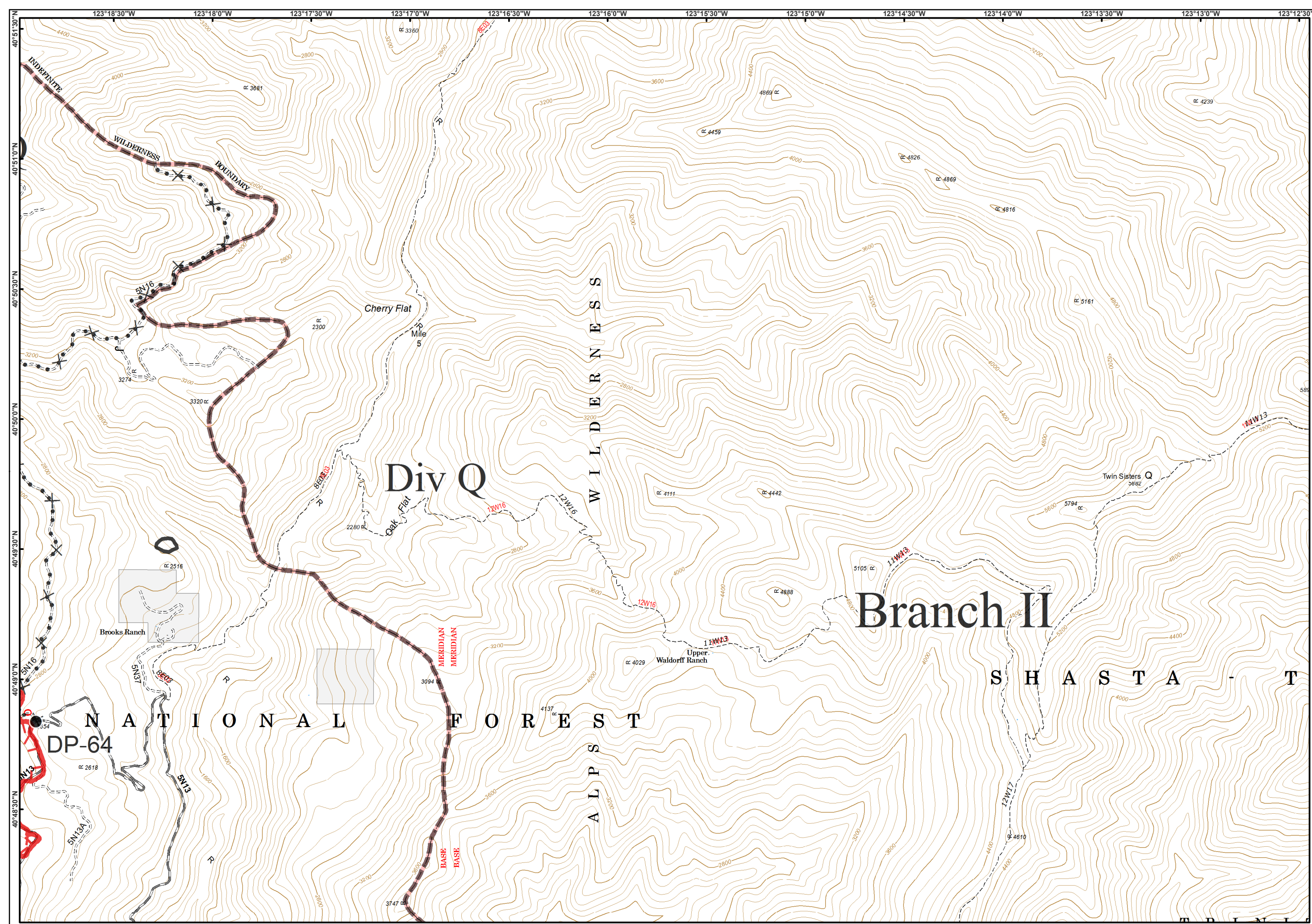
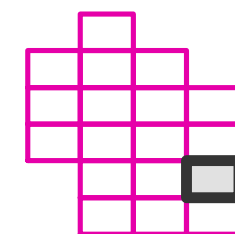
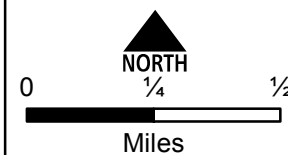
S H A S T A - T R I N I T Y

Div T

Branch II



- Drop Point
- ▬ Uncontrolled Fire Edge
- ▬ Completed Line
- ✕ Proposed Dozer Line
- ▭ Wilderness



Branch I

Div W

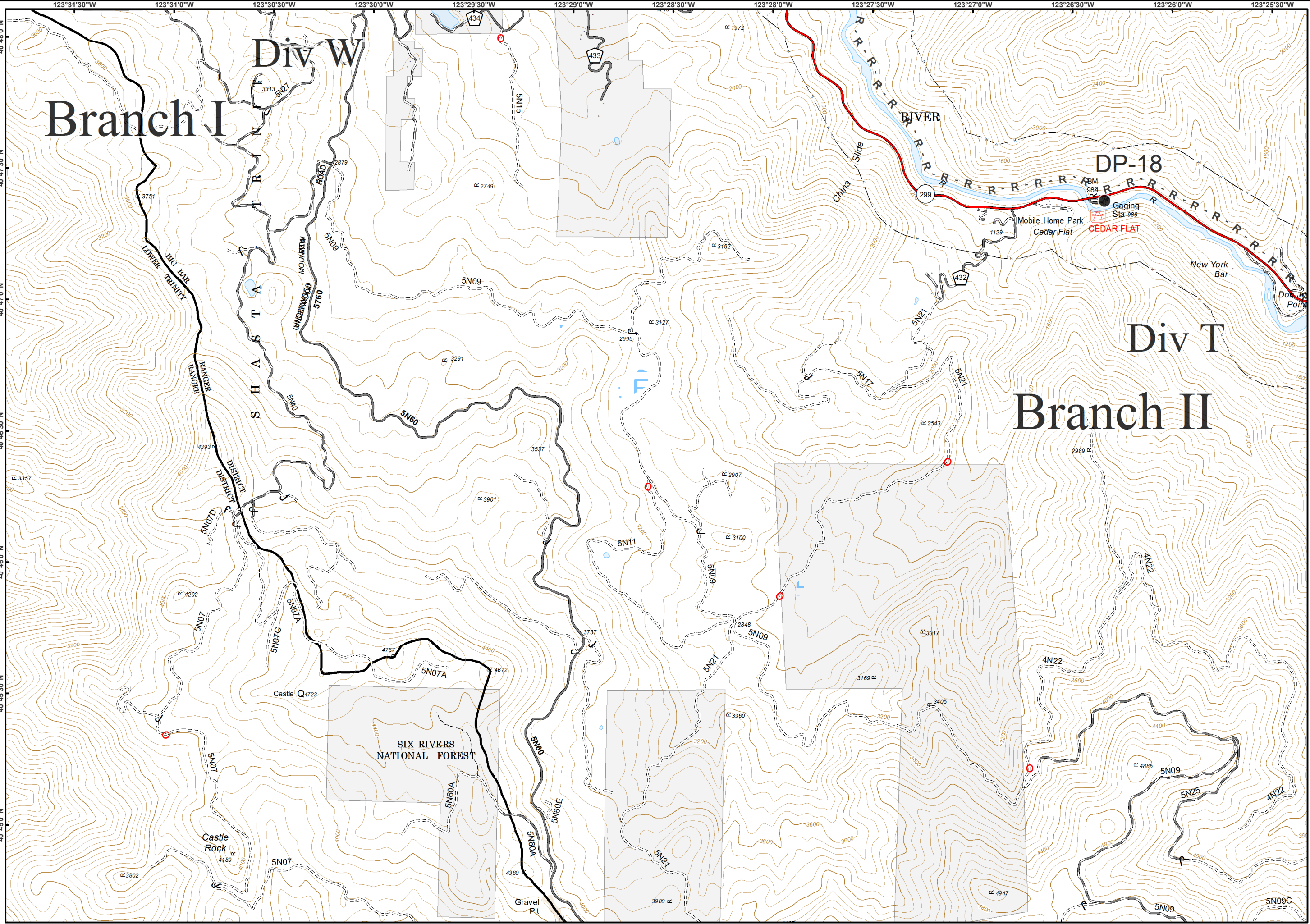
RIVER

DP-18

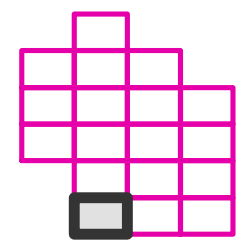
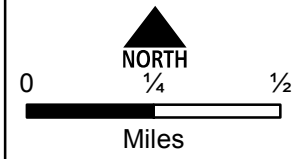
Branch II

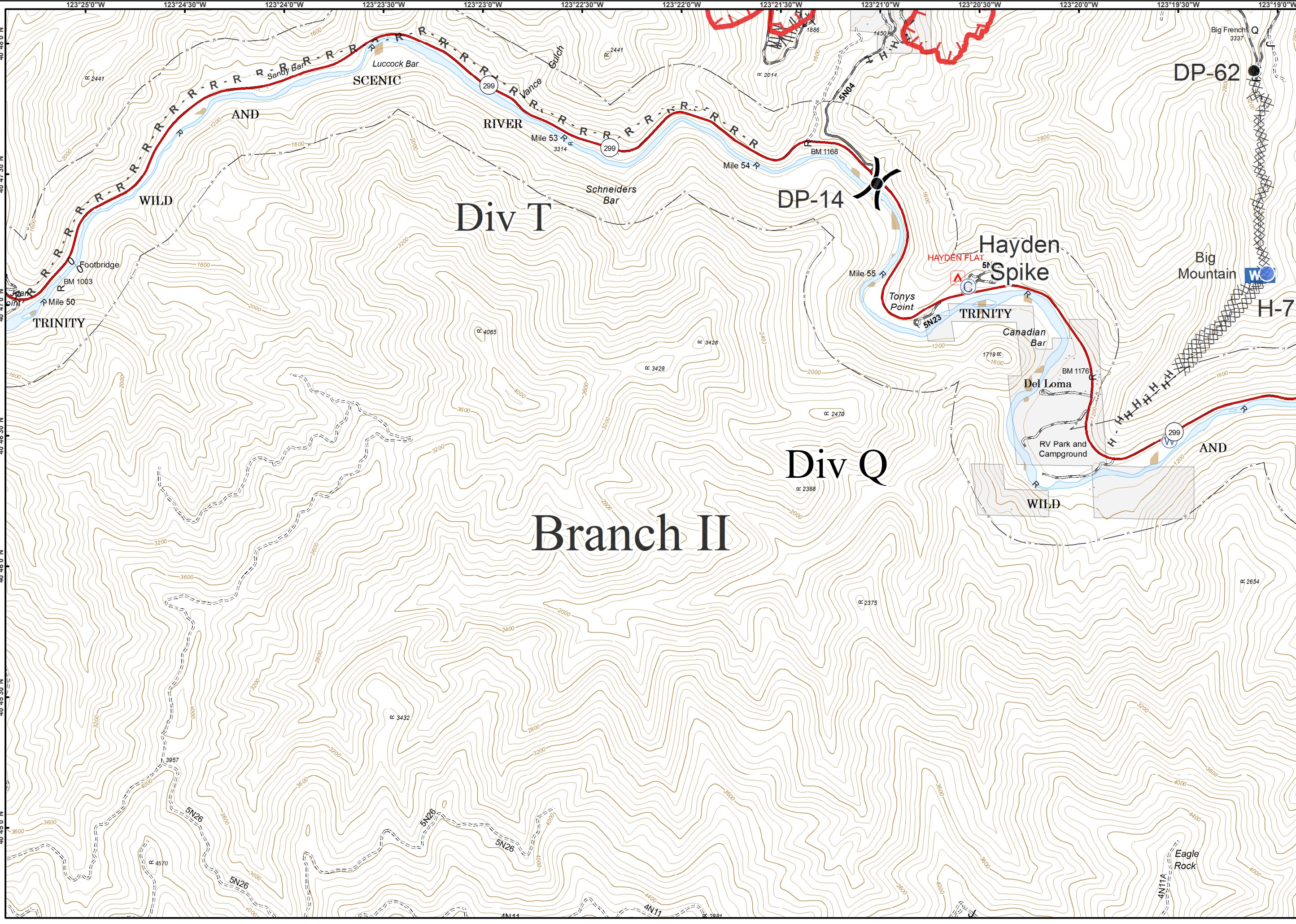
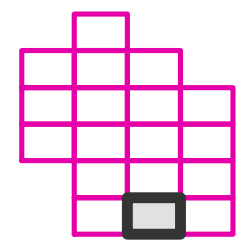
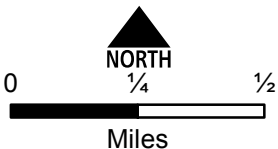
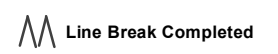
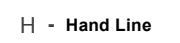
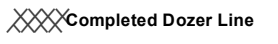
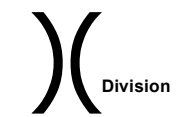
Div T

SIX RIVERS NATIONAL FOREST



● Drop Point
 R - Road as Completed Line





Div T

DP-14

Hayden Spike

TRINITY

Div Q

Branch II

DP-62

H-7

Big Mountain

RV Park and Campground

WILD

Canadian Bar

Del Loma

BM 1176

Tonys Point

Mile 55

Mile 54

Mile 53

Luccock Bar

AND

WILD

TRINITY

Footbridge

Mile 50

BM 1003

Big French

Q

3337

2800

2000

1600

1200

800

400

0

1600

1200

800

400

0

4000

3600

2654

4000

4000

4000

4000

4000

4000

4000

4000

4000

4000

4000

4000

4000

4000

4000

4000

4000

4000

4000

4000

4000

4000

4000

4000

4000

4000

4000

4000

4000

4000

4000

4000

4000

4000

4000

4000

4000

4000

4000

4000

4000

4000

4000

4000

4000

4000

4000

4000

4000

4000

4000

4000

4000

4000

