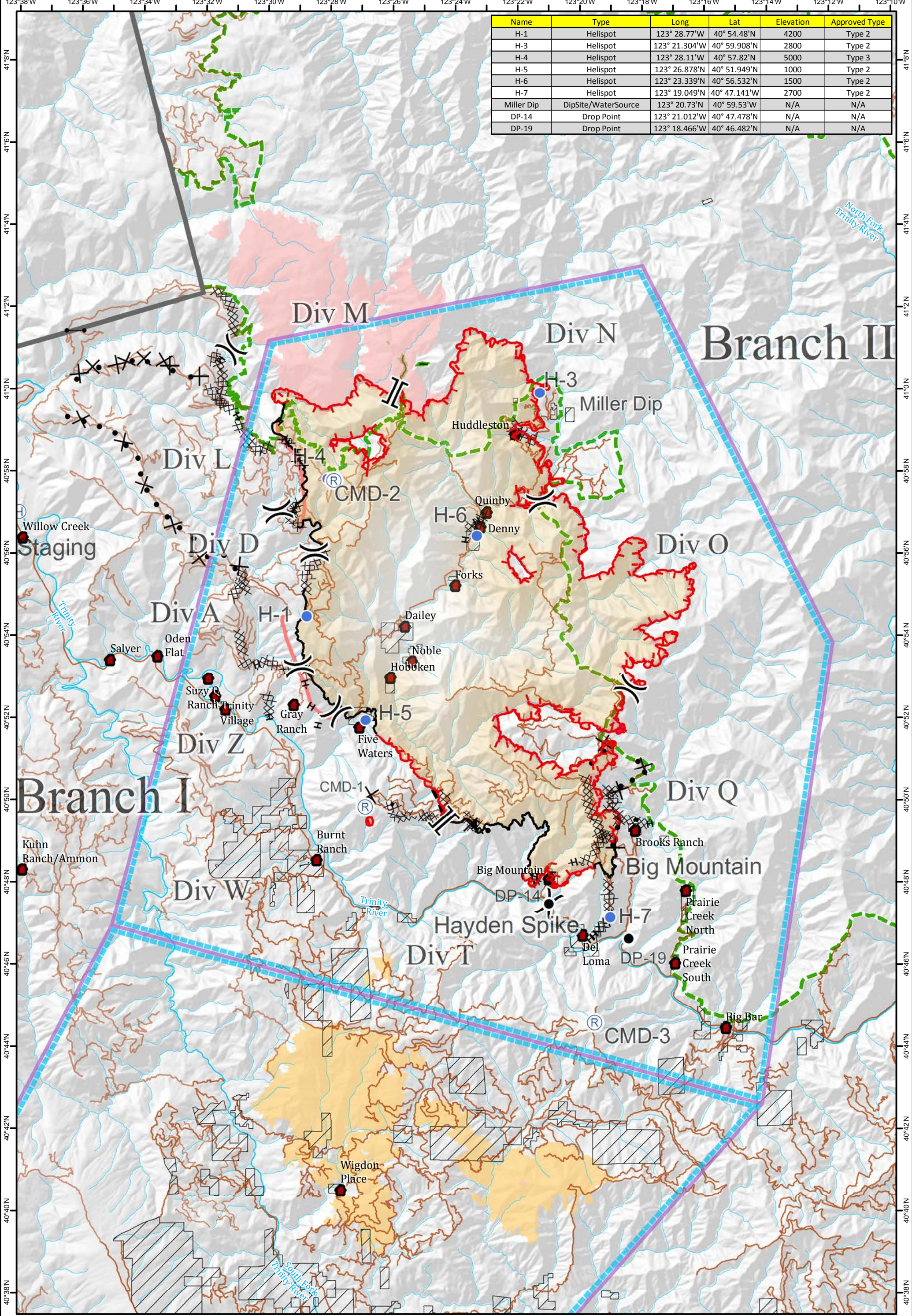


Name	Type	Long	Lat	Elevation	Approved Type
H-1	Helispot	123° 28.77'W	40° 54.48'N	4200	Type 2
H-3	Helispot	123° 21.304'W	40° 59.908'N	2800	Type 2
H-4	Helispot	123° 28.11'W	40° 57.82'N	5000	Type 3
H-5	Helispot	123° 26.878'W	40° 51.949'N	1000	Type 2
H-6	Helispot	123° 23.339'W	40° 56.532'N	1500	Type 2
H-7	Helispot	123° 19.049'W	40° 47.141'W	2700	Type 2
Miller Dip	DipSite/WaterSource	123° 20.73'N	40° 59.53'W	N/A	N/A
DP-14	Drop Point	123° 21.012'W	40° 47.478'N	N/A	N/A
DP-19	Drop Point	123° 18.466'W	40° 46.482'N	N/A	N/A



Air Operations
 River Complex
 CA-SHF-2066
 08/27/2015



TFRs
 Drop Point
 Helispot
 Uncontrolled Fire Edge
 Hand Line
 Proposed Dozer Line
 K Rail
 Retardant Drops
 NON-FS

Helibase
 Repeater
 Completed Dozer Line
 Line Break Completed
 Planned Fire Line
 Unknown
 Hoopas
 Roads
 2013 Corral Fire
 Wilderness
 South Complex

Towns

