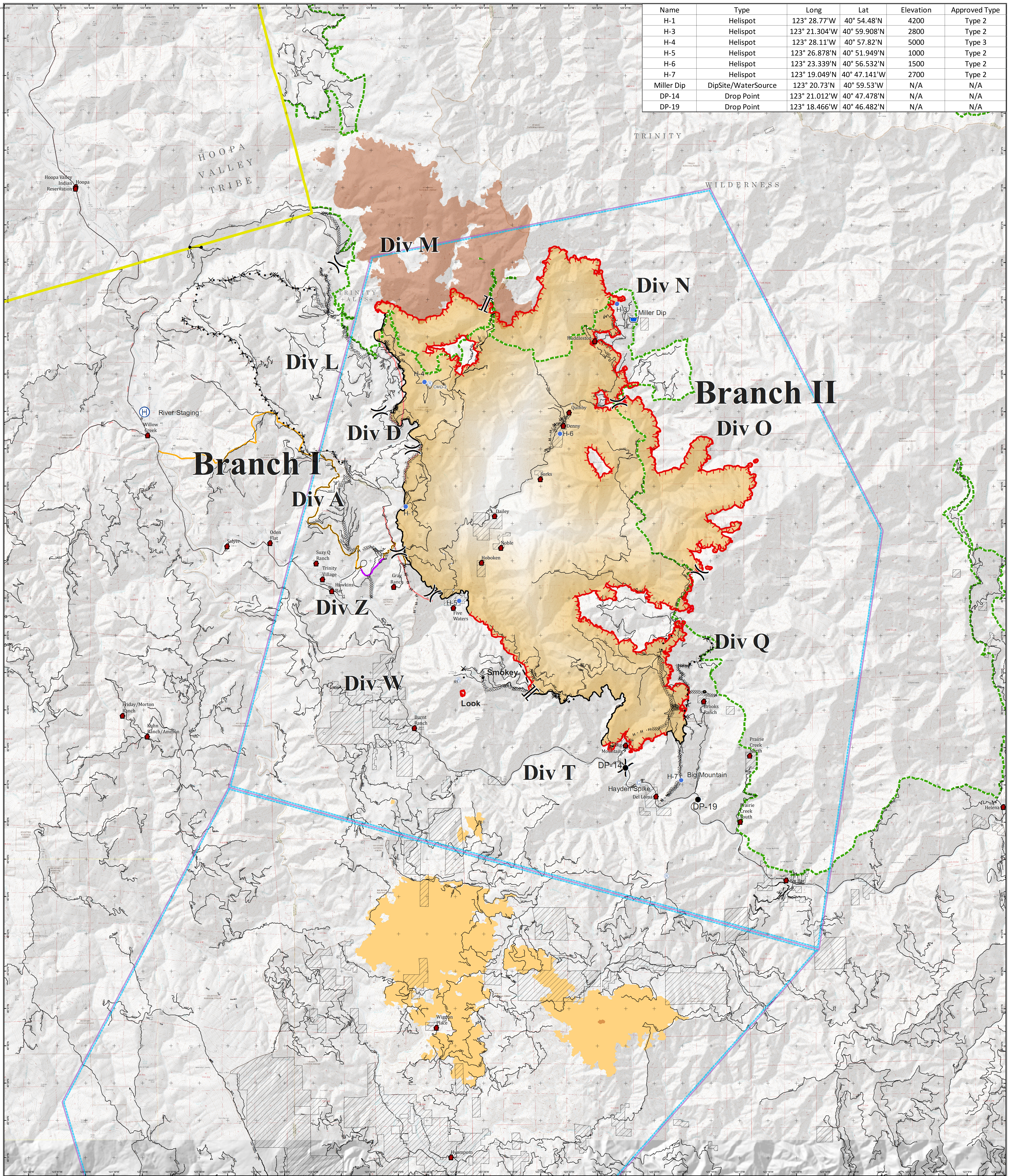


Name	Type	Long	Lat	Elevation	Approved Type
H-1	Helispot	123° 28.77'W	40° 54.48'N	4200	Type 2
H-3	Helispot	123° 21.304'W	40° 59.908'N	2800	Type 2
H-4	Helispot	123° 28.11'W	40° 57.82'N	5000	Type 3
H-5	Helispot	123° 26.878'N	40° 51.949'N	1000	Type 2
H-6	Helispot	123° 23.339'N	40° 56.532'N	1500	Type 2
H-7	Helispot	123° 19.049'N	40° 47.141'W	2700	Type 2
Miller Dip	DipSite/WaterSource	123° 20.73'N	40° 59.53'W	N/A	N/A
DP-14	Drop Point	123° 21.012'W	40° 47.478'N	N/A	N/A
DP-19	Drop Point	123° 18.466'W	40° 46.482'N	N/A	N/A

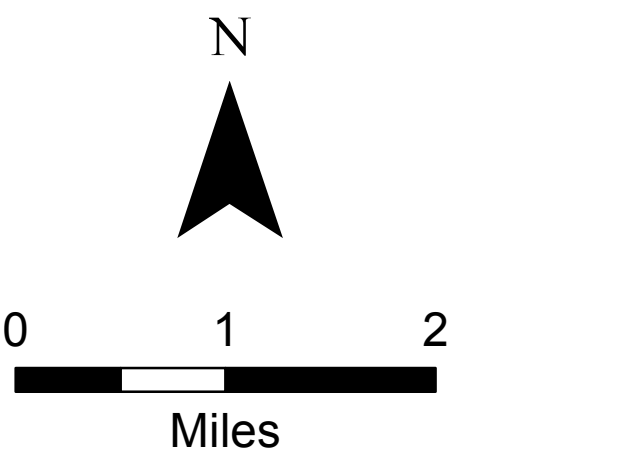


# Air Operations

River Complex  
CA-SHF-2066  
08/27/2015



( )	Division	(C)	Camp	—	Uncontrolled Fire Edge		Line Break Completed	—	Control Line to be Prepped	—	Road	▨	Non Forest Service Ownership
	Branch	●	Drop Point	▨▨▨▨▨▨	Completed Dozer Line	- - - - -	Planned Fire Line	—	Proposed Dozer Line	●	Towns	⬢	Wilderness
(H)	Helibase	⊙	Helispot	—	Completed Line	× × × × ×	Proposed Dozer Line	—	Retardant Drops	⊙	TFRs	⬢	2013 Corral Fire
⊙	Repeater	●	Repeater	—	Hand Line	—	Unknown	—	K_Rail	⬢	Hoopa	⬢	South Complex



AIR OPERATIONS