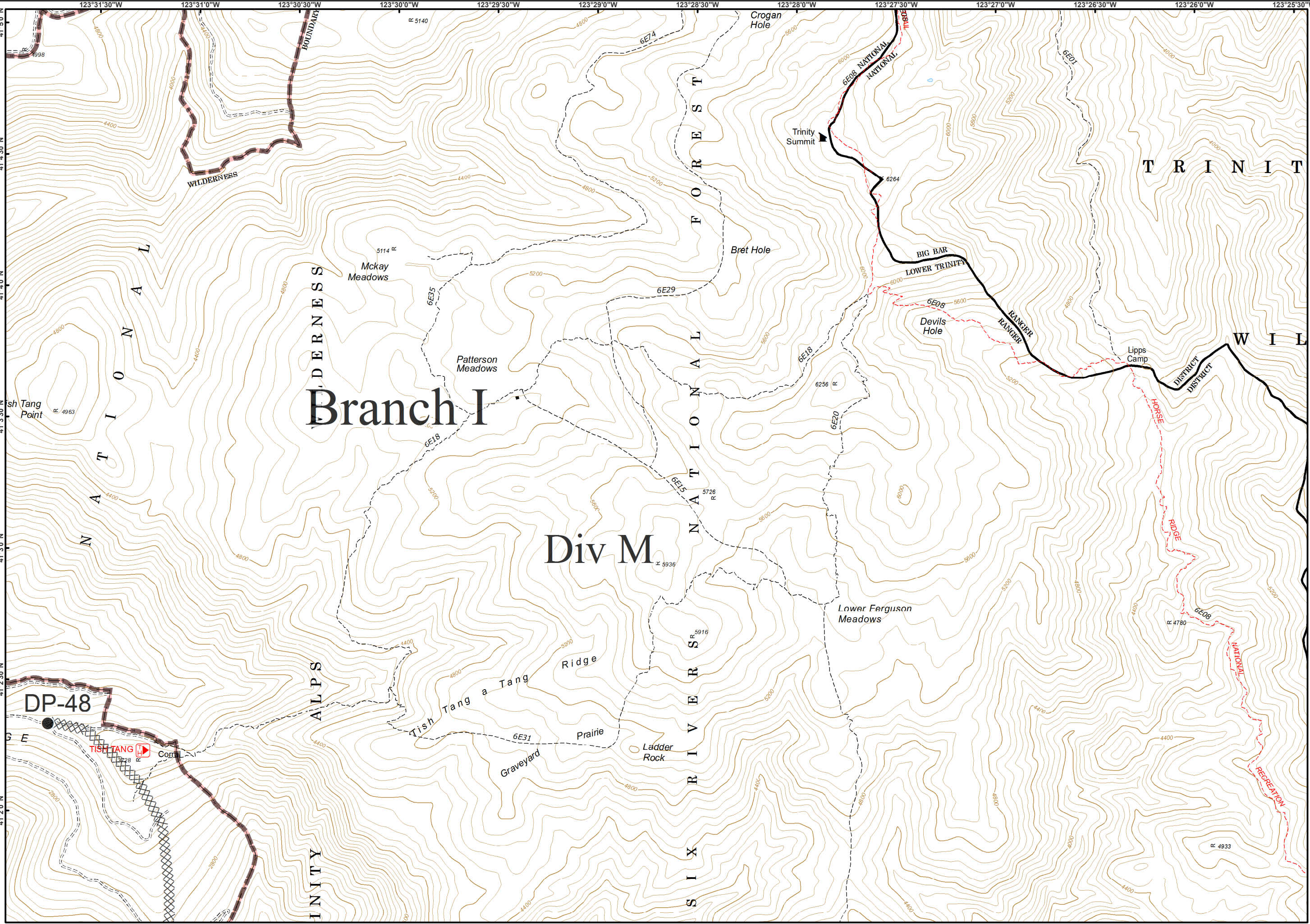
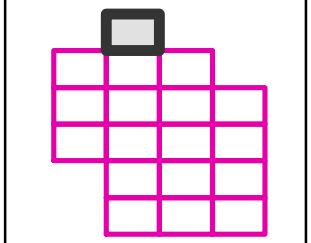
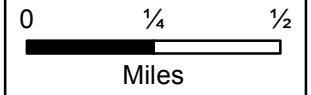
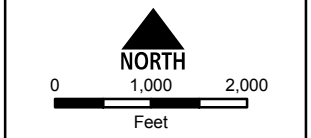


08/27/2015



IAP Tiles  
Page - 1

- Drop Point
- XXXX Completed Dozer Line
- W Wilderness

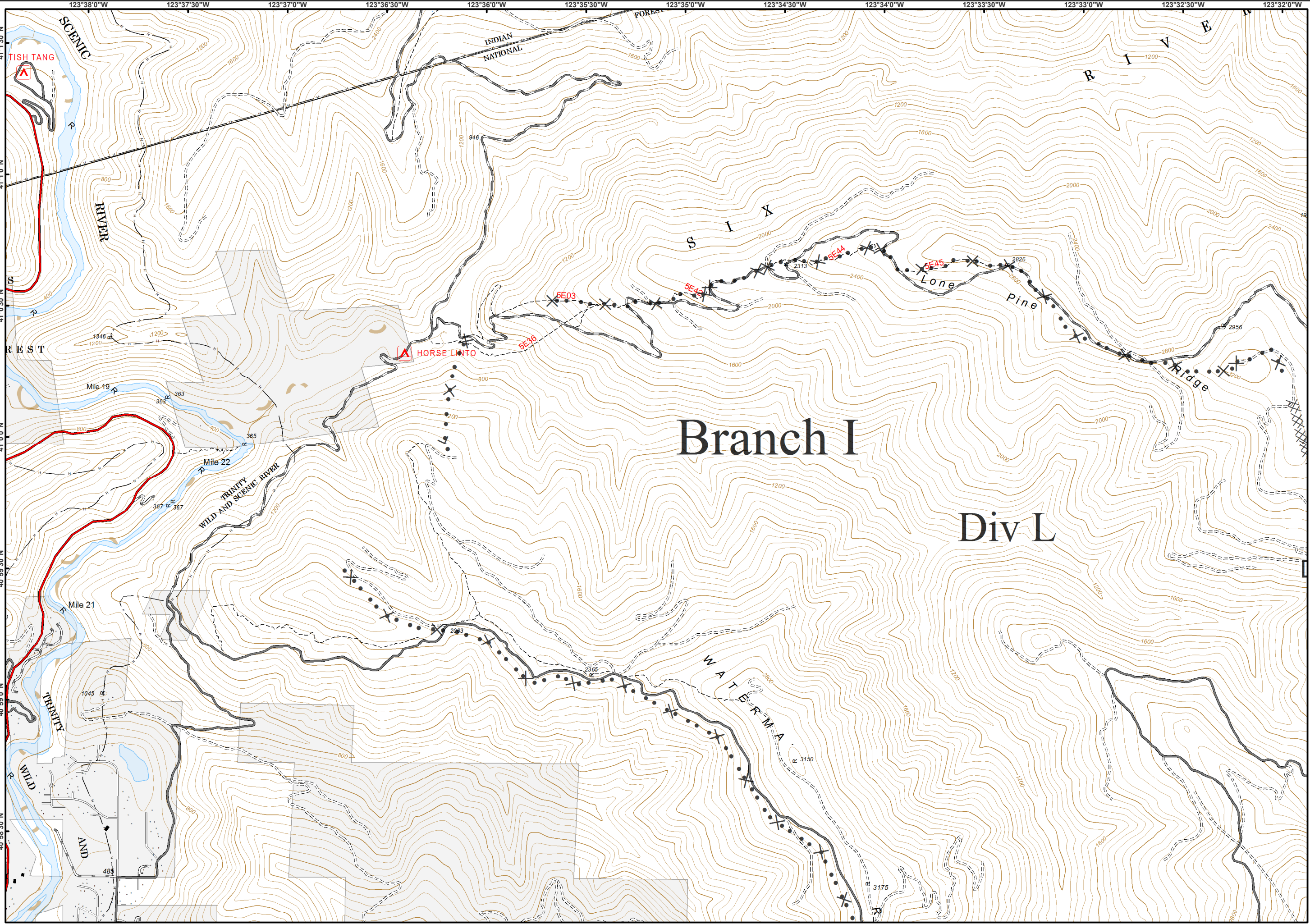
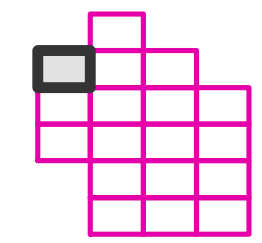
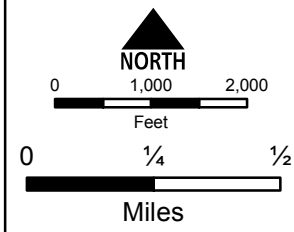


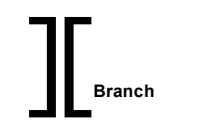
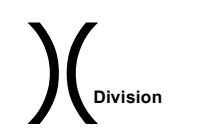
08/27/2015



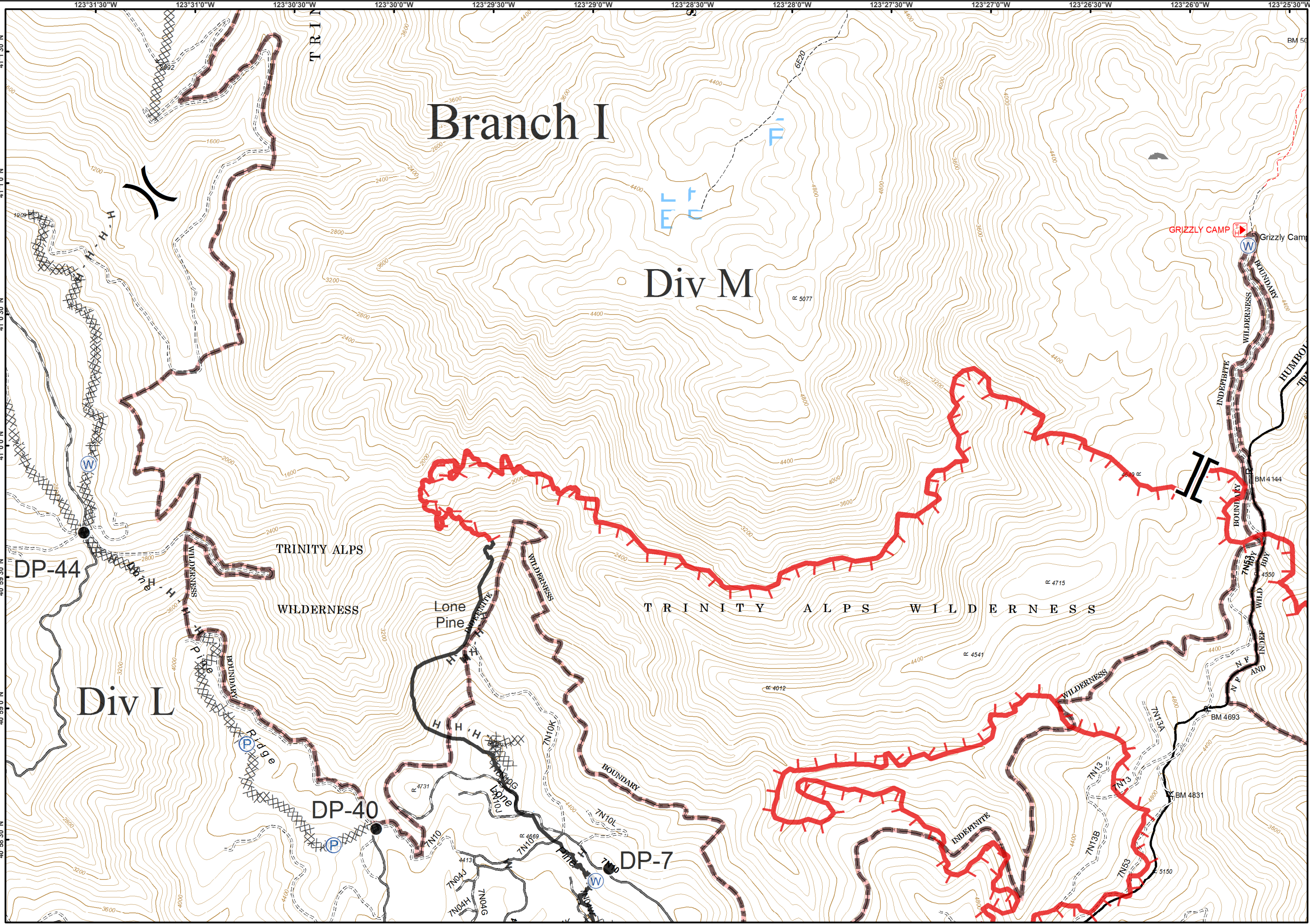
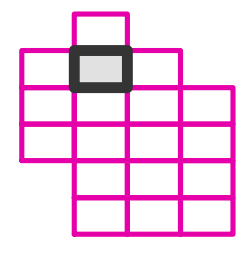
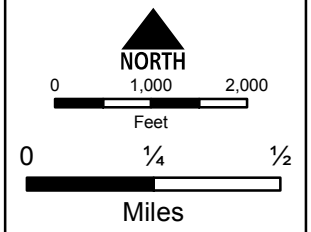
IAP Tiles  
Page - 2

- Completed Dozer Line
- Proposed Dozer Line



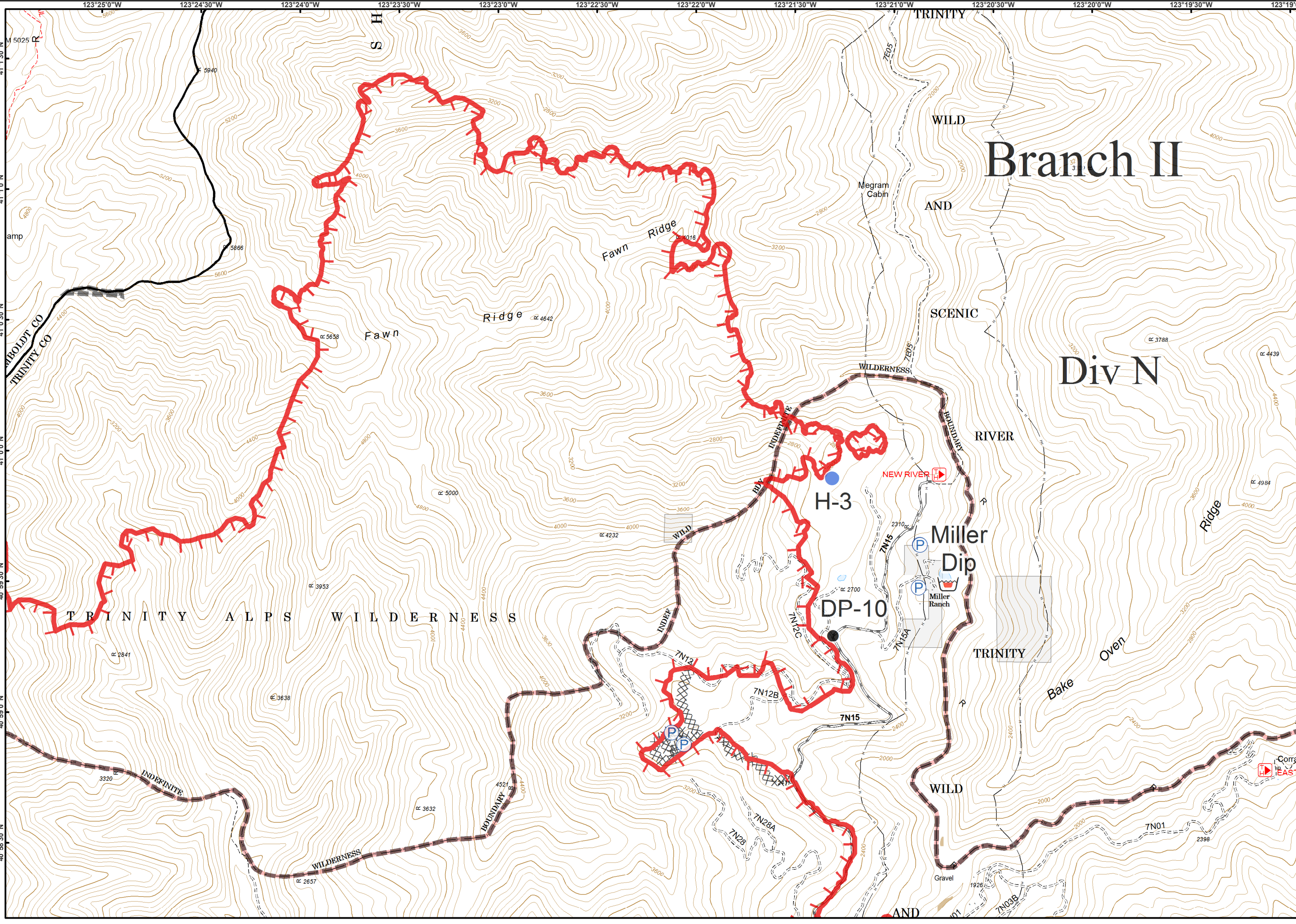
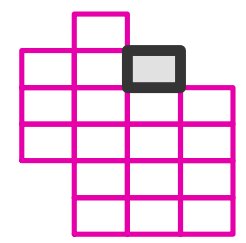
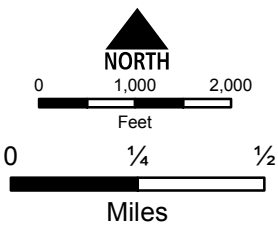


- Drop Point
- Ⓟ Pump
- Ⓜ Water Source
- ▬ Uncontrolled Fire Edge
- ▨ Completed Dozer Line
- ▬ Completed Line
- H - Hand Line
- ▭ Wilderness



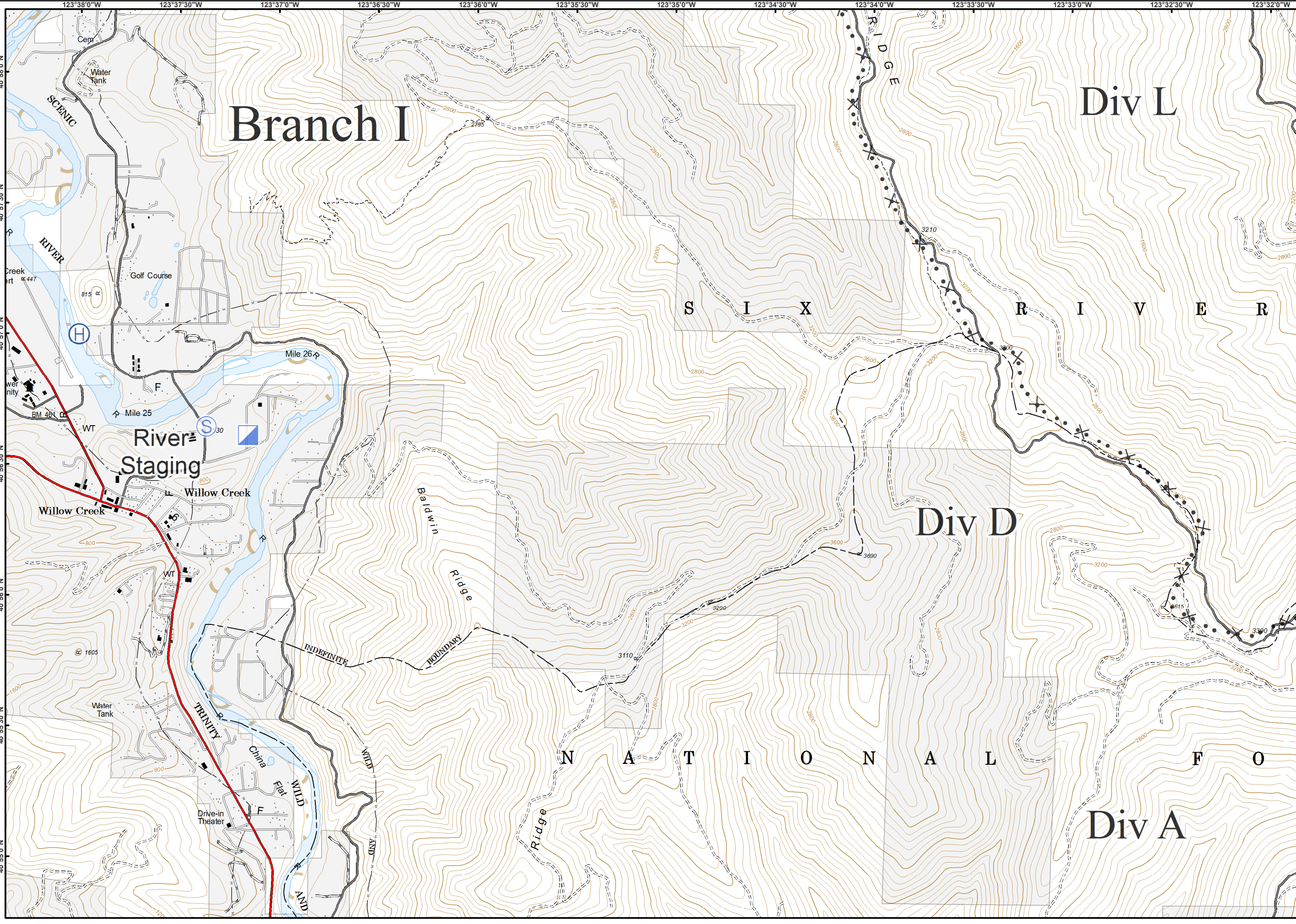
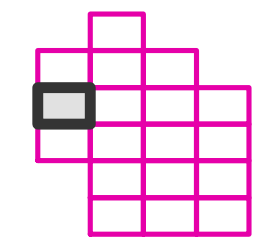
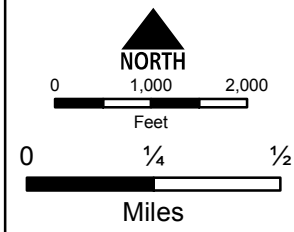


- Drop Point
- Helispot
- P Pump
- Retardant/Mud Pit
- Uncontrolled Fire Edge
- Completed Dozer Line
- Wilderness





- Helibase
- Incident Command Post
- Staging Area
- Proposed Dozer Line



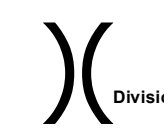
# River Complex

CA-SHF-002066

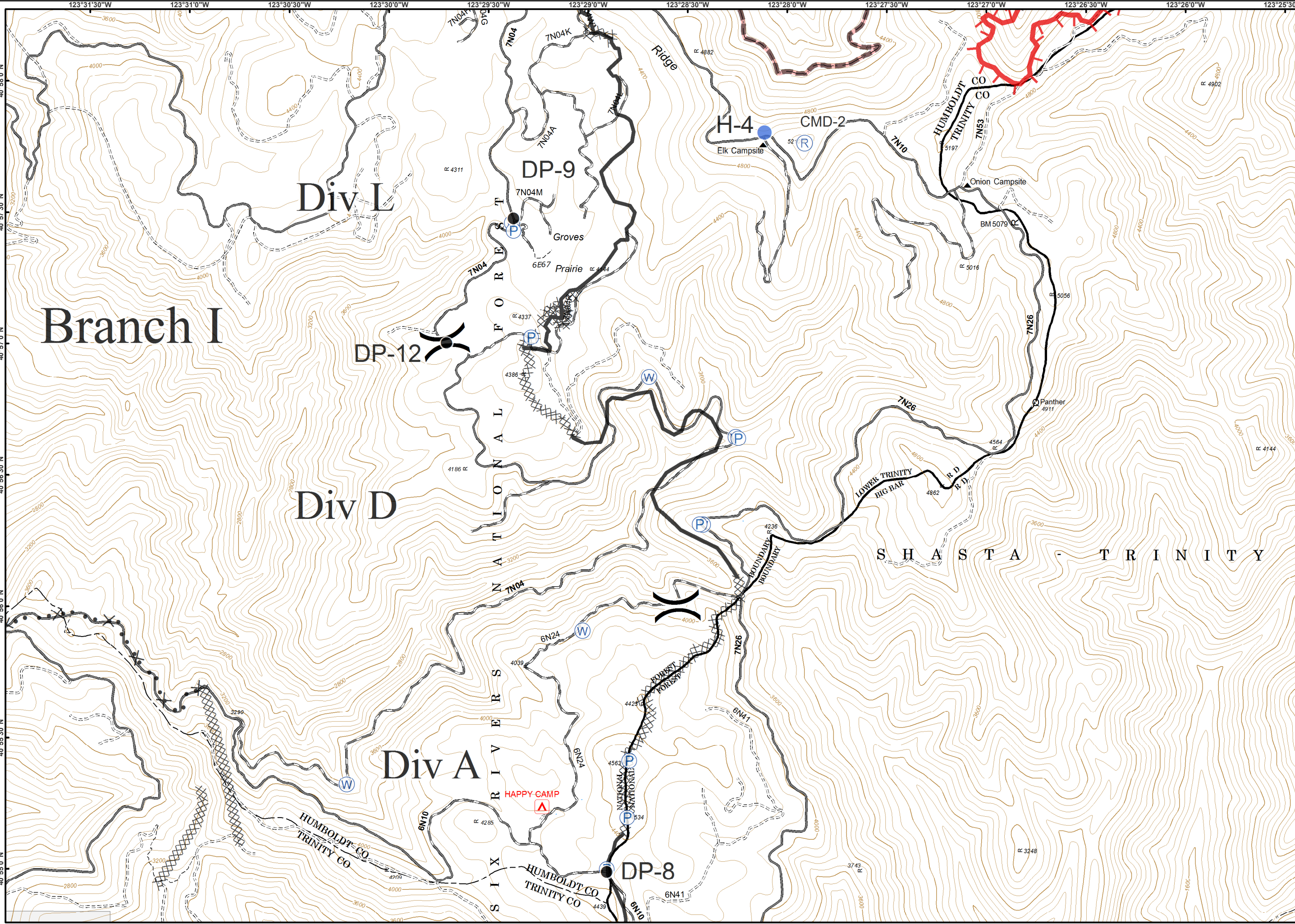
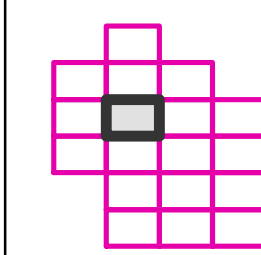
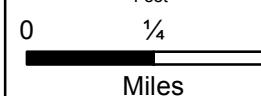
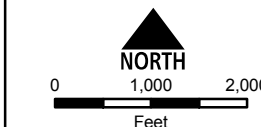
08/27/2015



IAP Tiles  
Page - 6



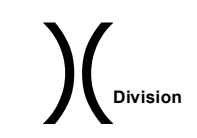
- Drop Point
- Helispot
- P Pump
- R Repeater
- W Water Source
- Uncontrolled Fire Edge
- Completed Dozer Line
- Completed Line
- H - Hand Line
- Proposed Dozer Line
- Wilderness



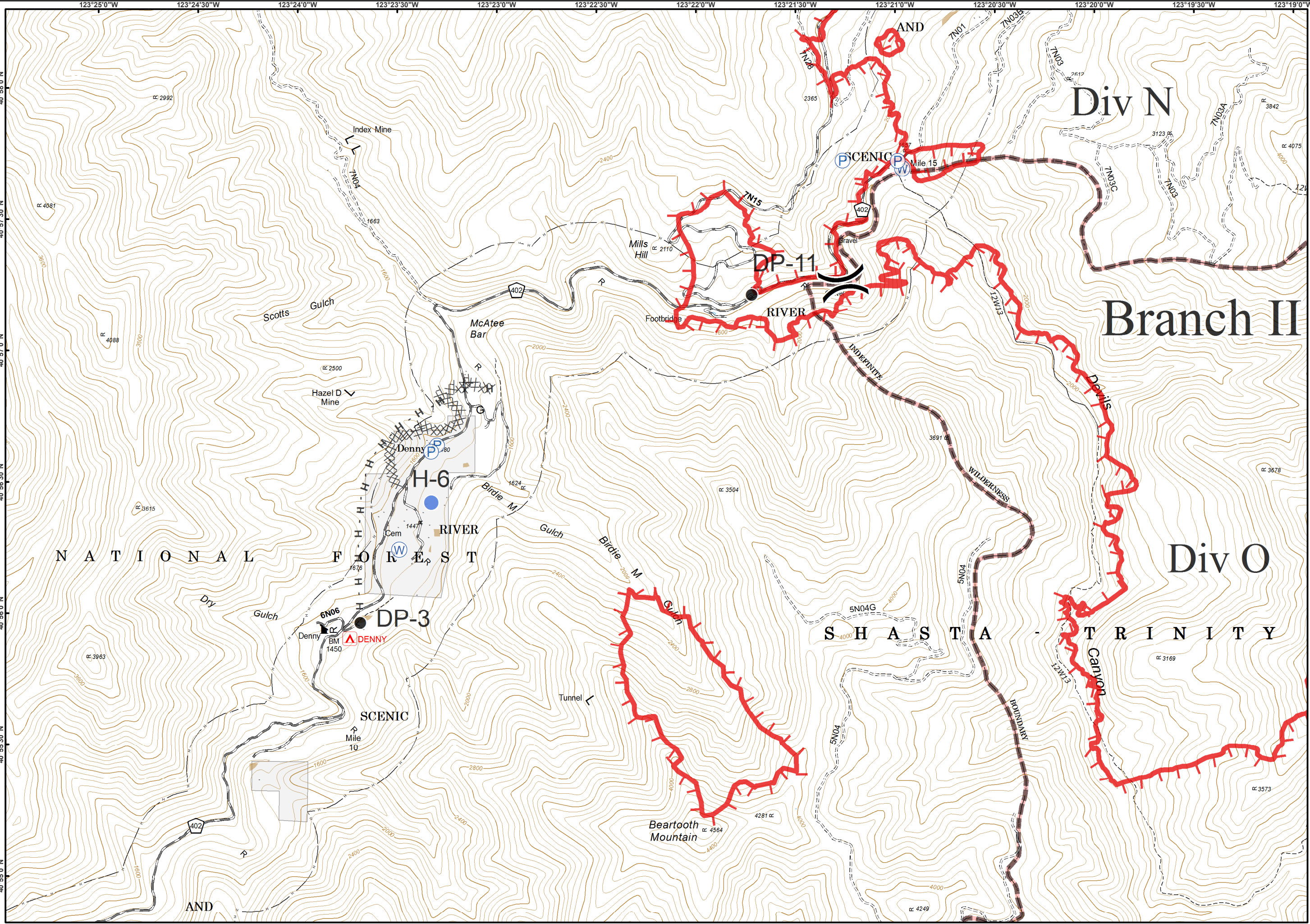
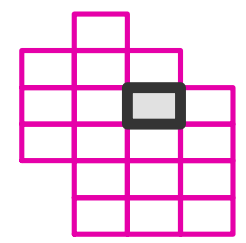
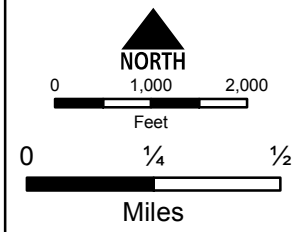
08/27/2015

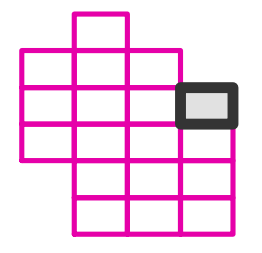
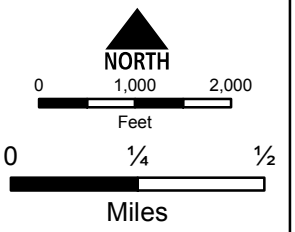
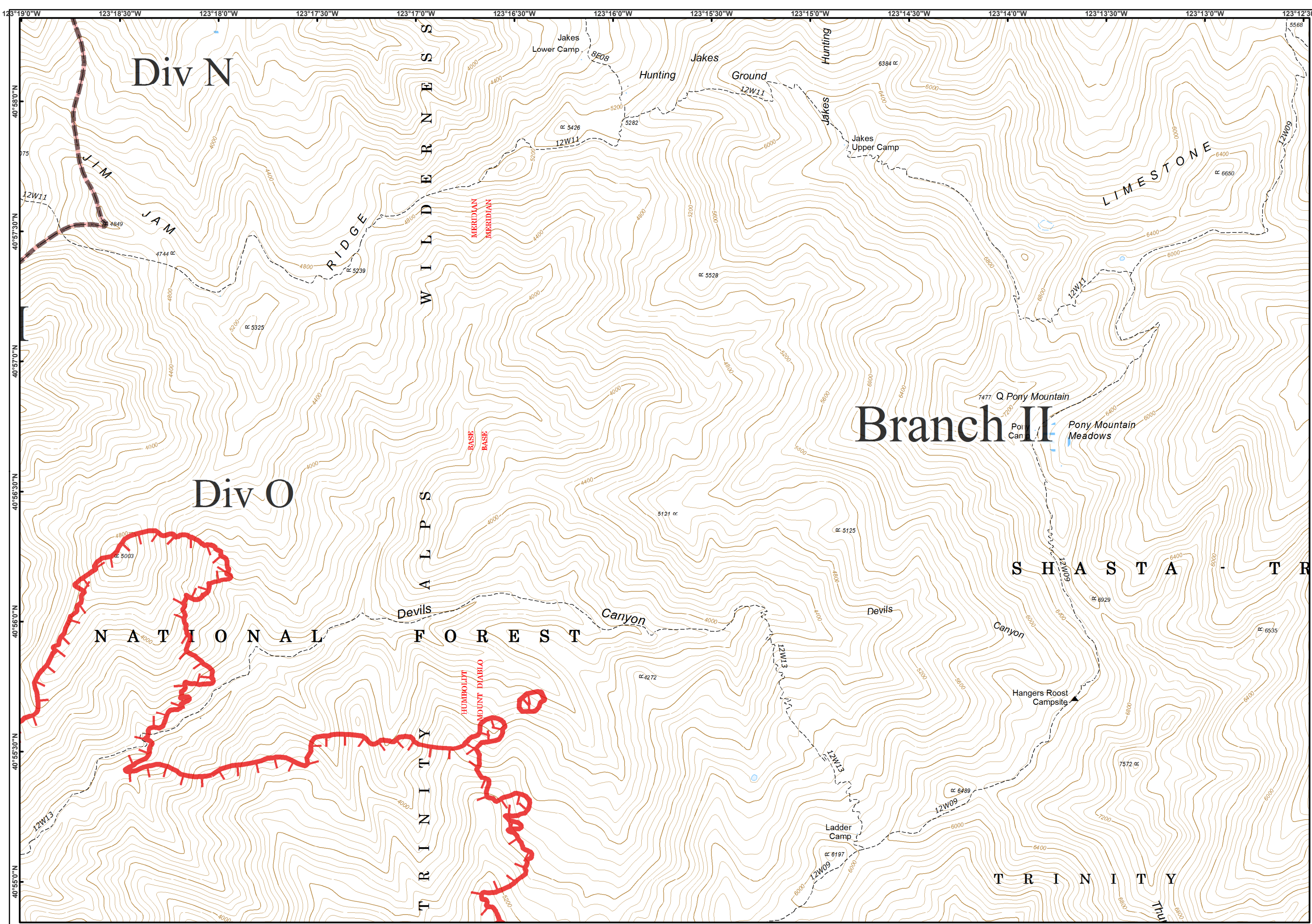


IAP Tiles  
Page - 7



- Drop Point
- Helispot
- P Pump
- W Water Source
- Uncontrolled Fire Edge
- Completed Dozer Line
- H - Hand Line
- Wilderness







# River Complex

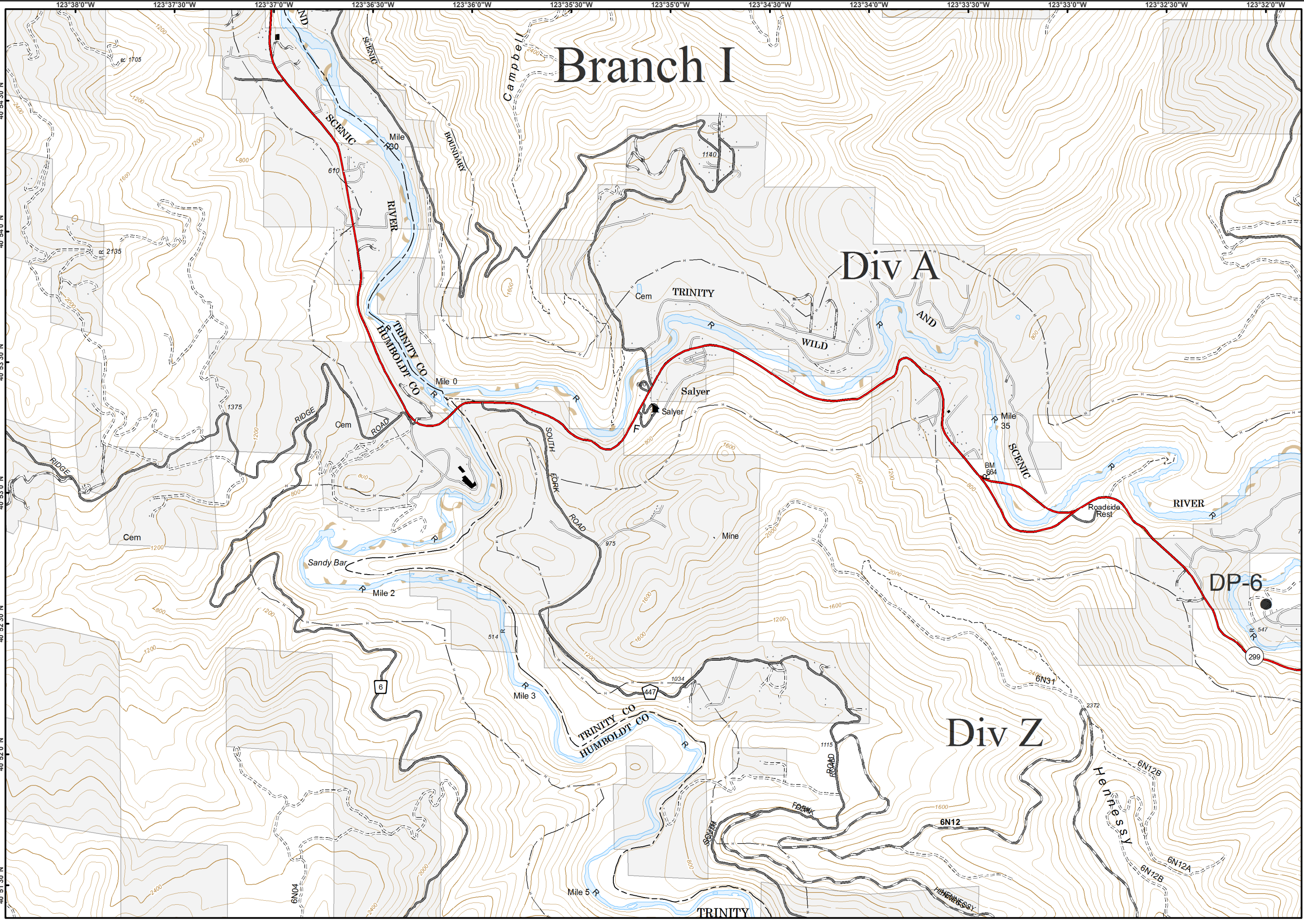
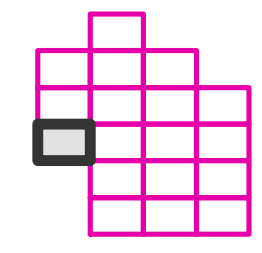
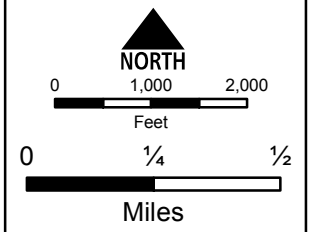
CA-SHF-002066

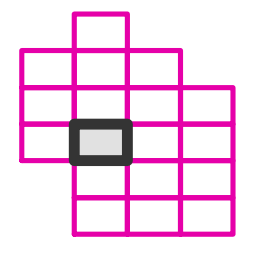
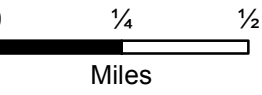
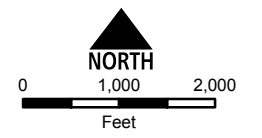
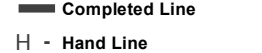
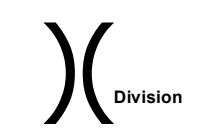
08/27/2015



IAP Tiles  
Page - 9

● Drop Point





Branch I

Div A

Div Z

Div W

H-1

Happy Camp

Mountain

DP-2

Dailey

TRINITY

DP-1

RIVER

SCENIC

Bell Flat

H-5

DP-5

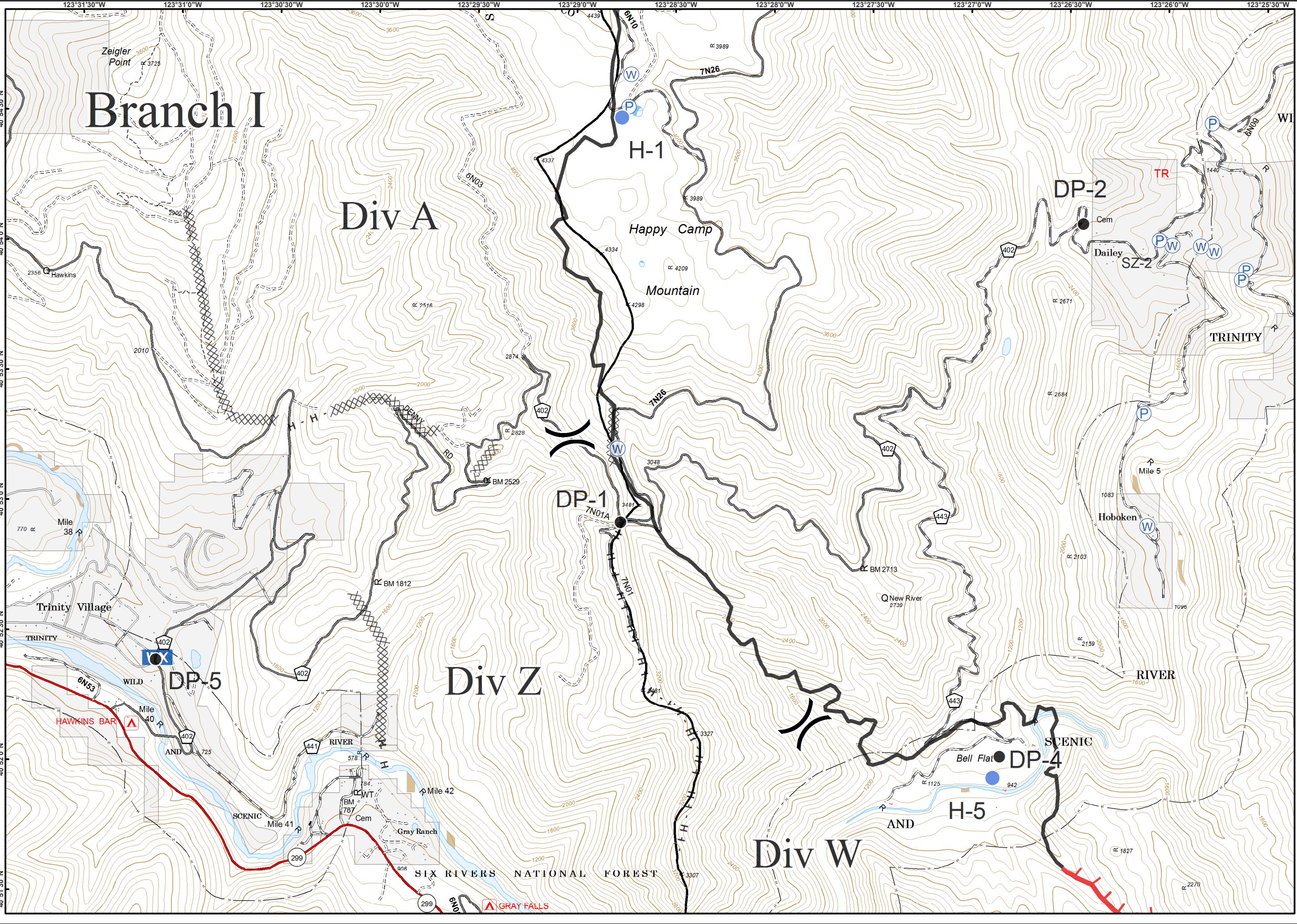
AND

SCENIC

Gray Ranch

SIX RIVERS NATIONAL FOREST

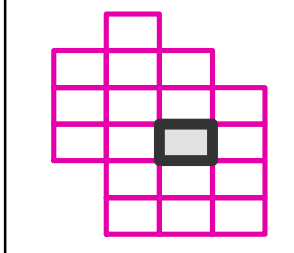
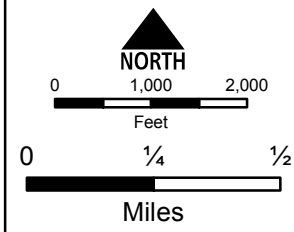
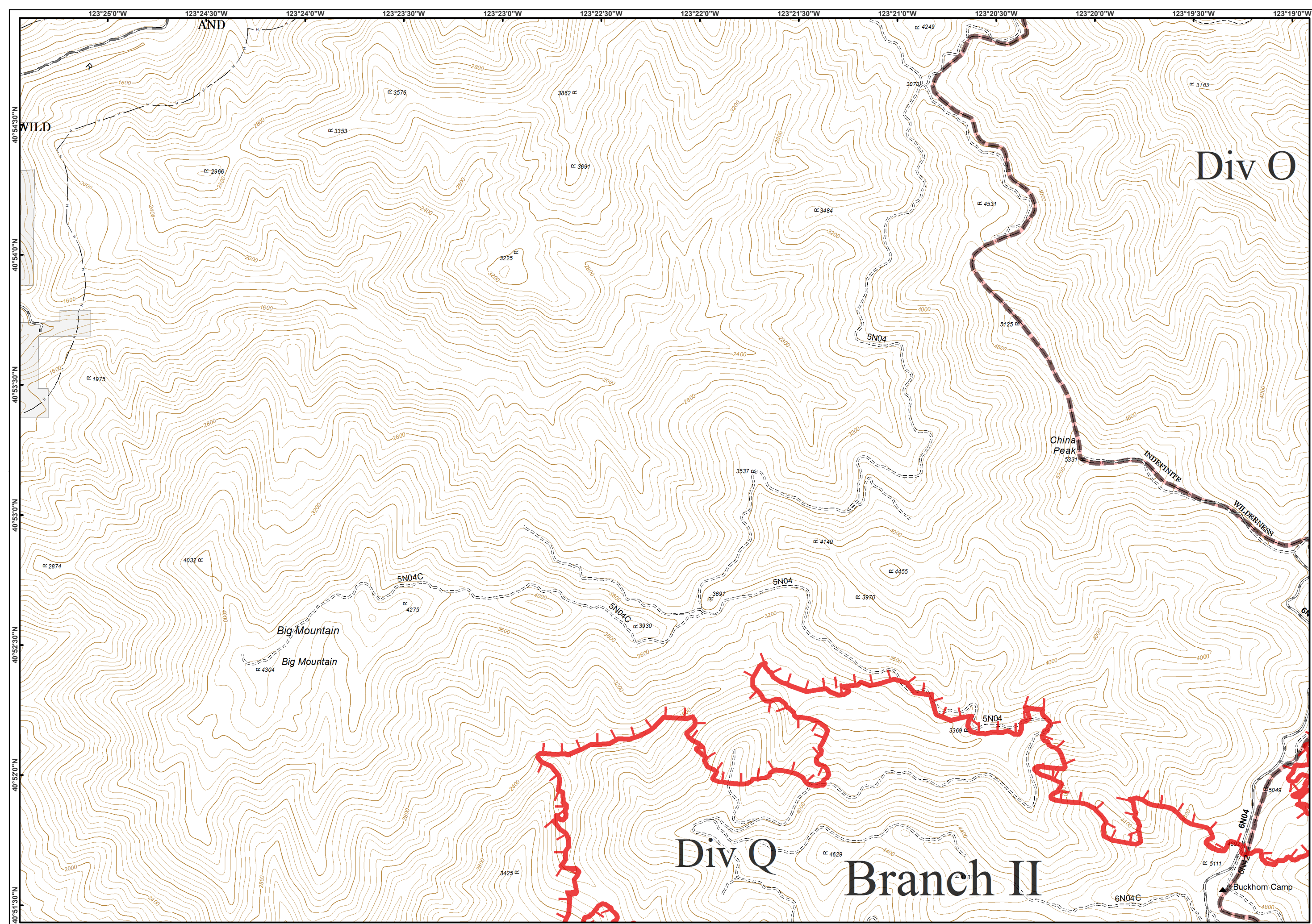
GRAY FALLS



08/27/2015



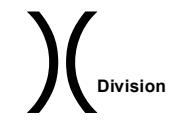
IAP Tiles  
Page - 11



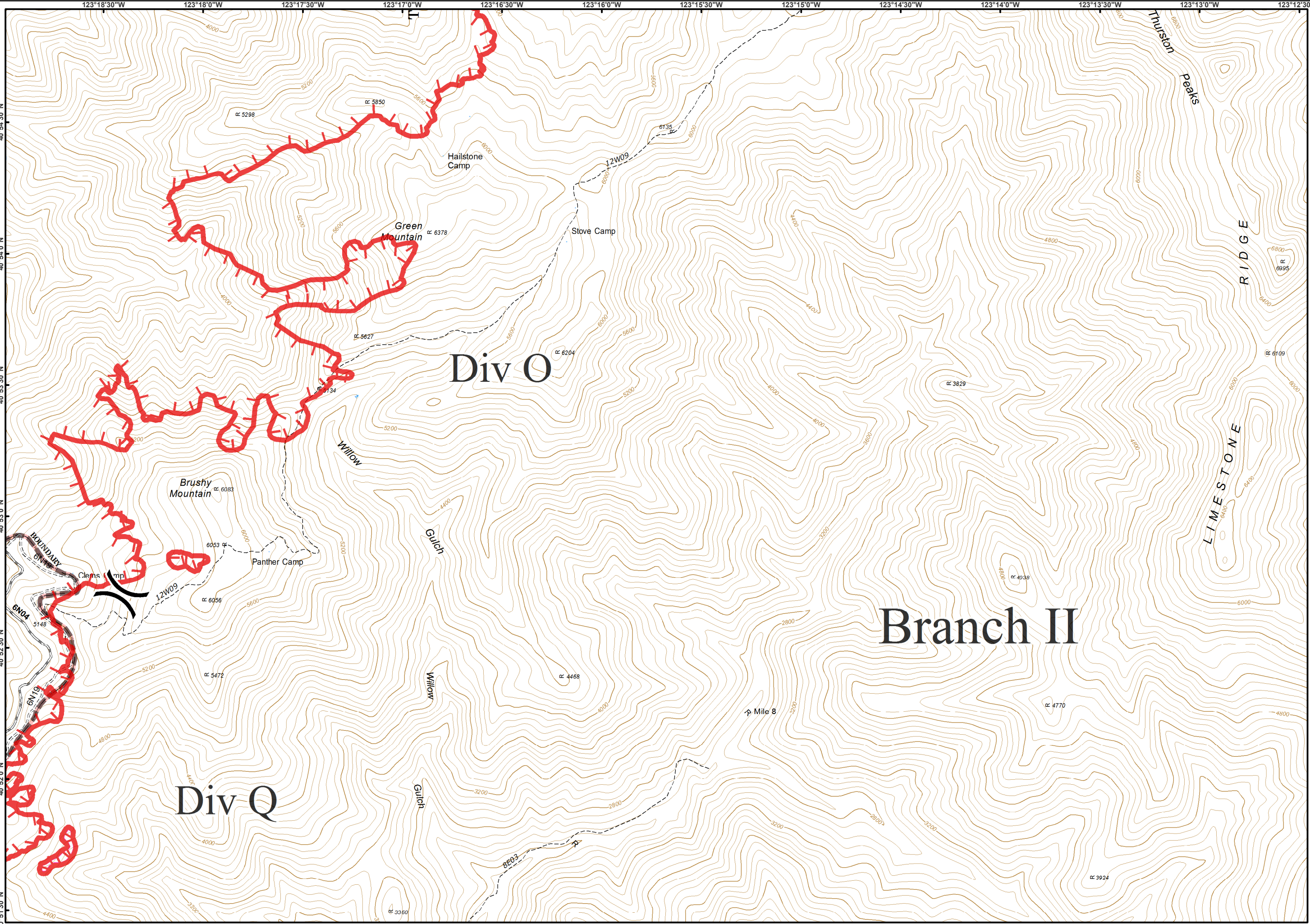
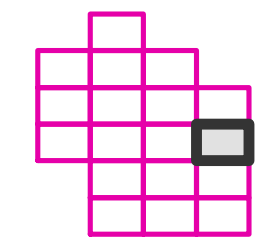
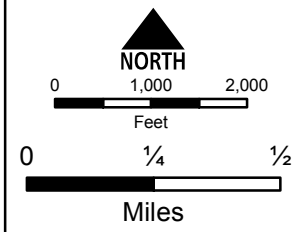
08/27/2015



IAP Tiles  
Page - 12



- Uncontrolled Fire Edge
- Unknown
- Wilderness



# River Complex

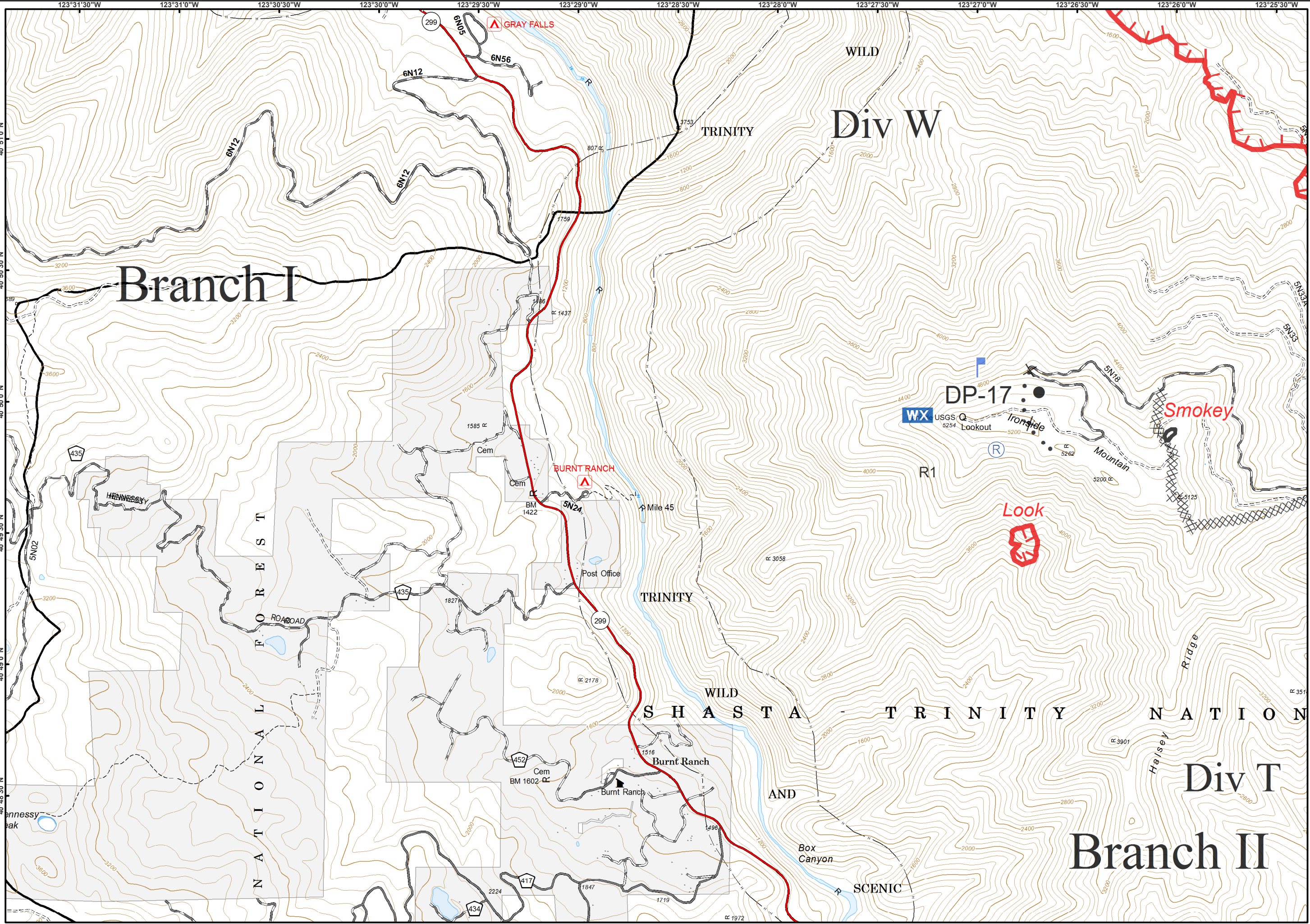
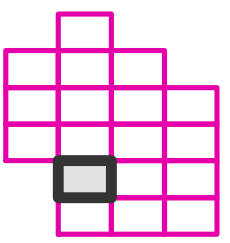
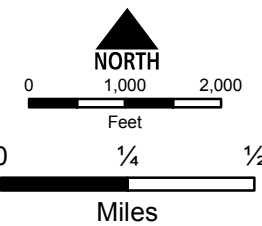
CA-SHF-002066

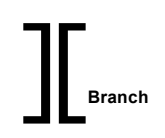
08/27/2015



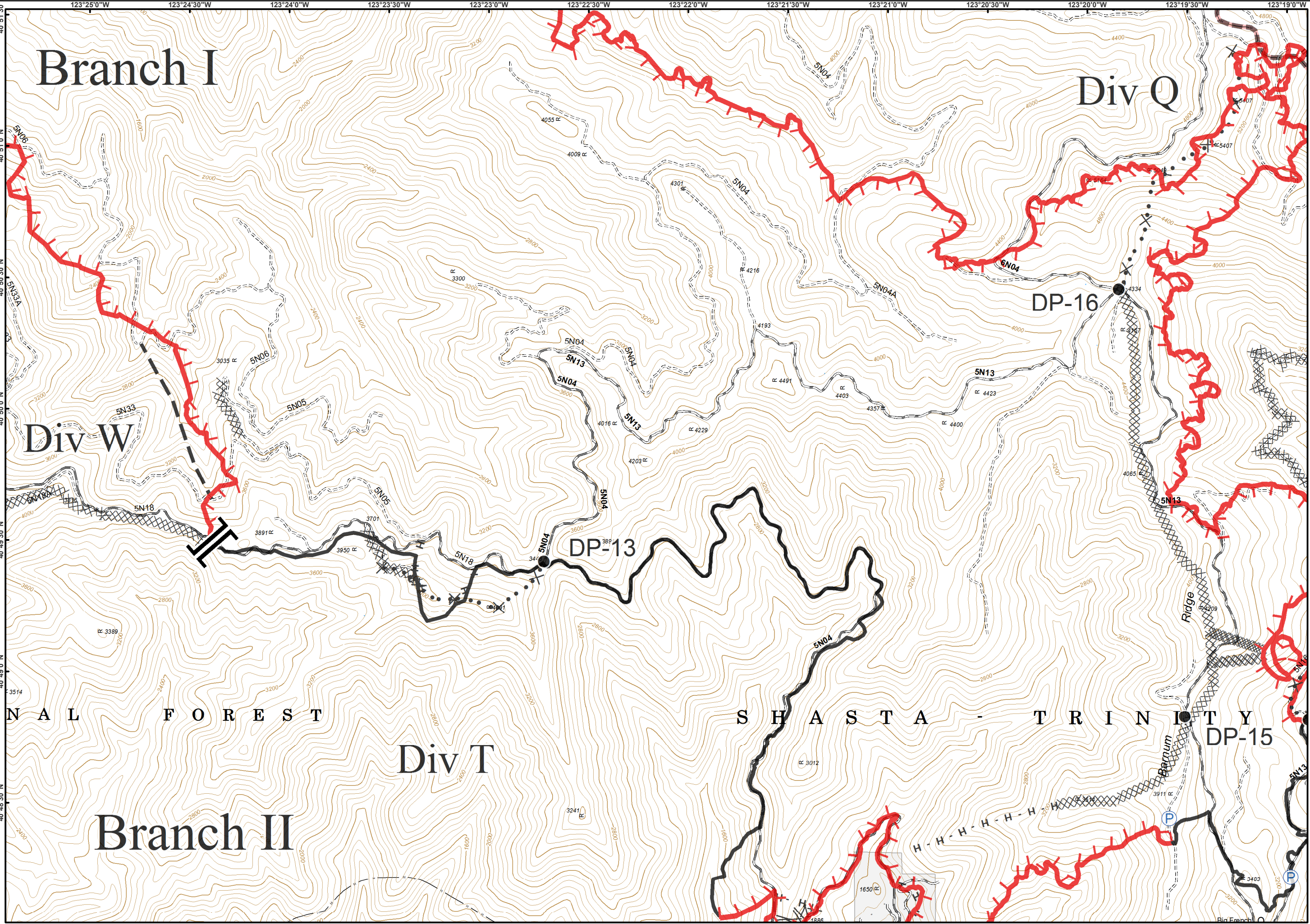
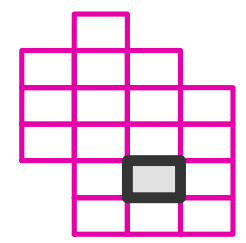
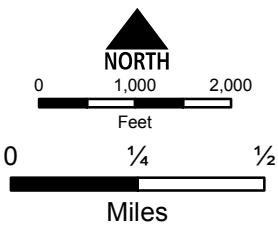
IAP Tiles  
Page - 13

- Drop Point
- Lookout
- WX Mobile Weather Unit
- Repeater
- Uncontrolled Fire Edge
- Completed Dozer Line
- Completed Line
- Proposed Dozer Line





- Drop Point
- P Pump
- Uncontrolled Fire Edge
- Completed Dozer Line
- Completed Line
- H - Hand Line
- Line Break Completed
- Planned Fire Line
- Proposed Dozer Line
- Wilderness



# River Complex

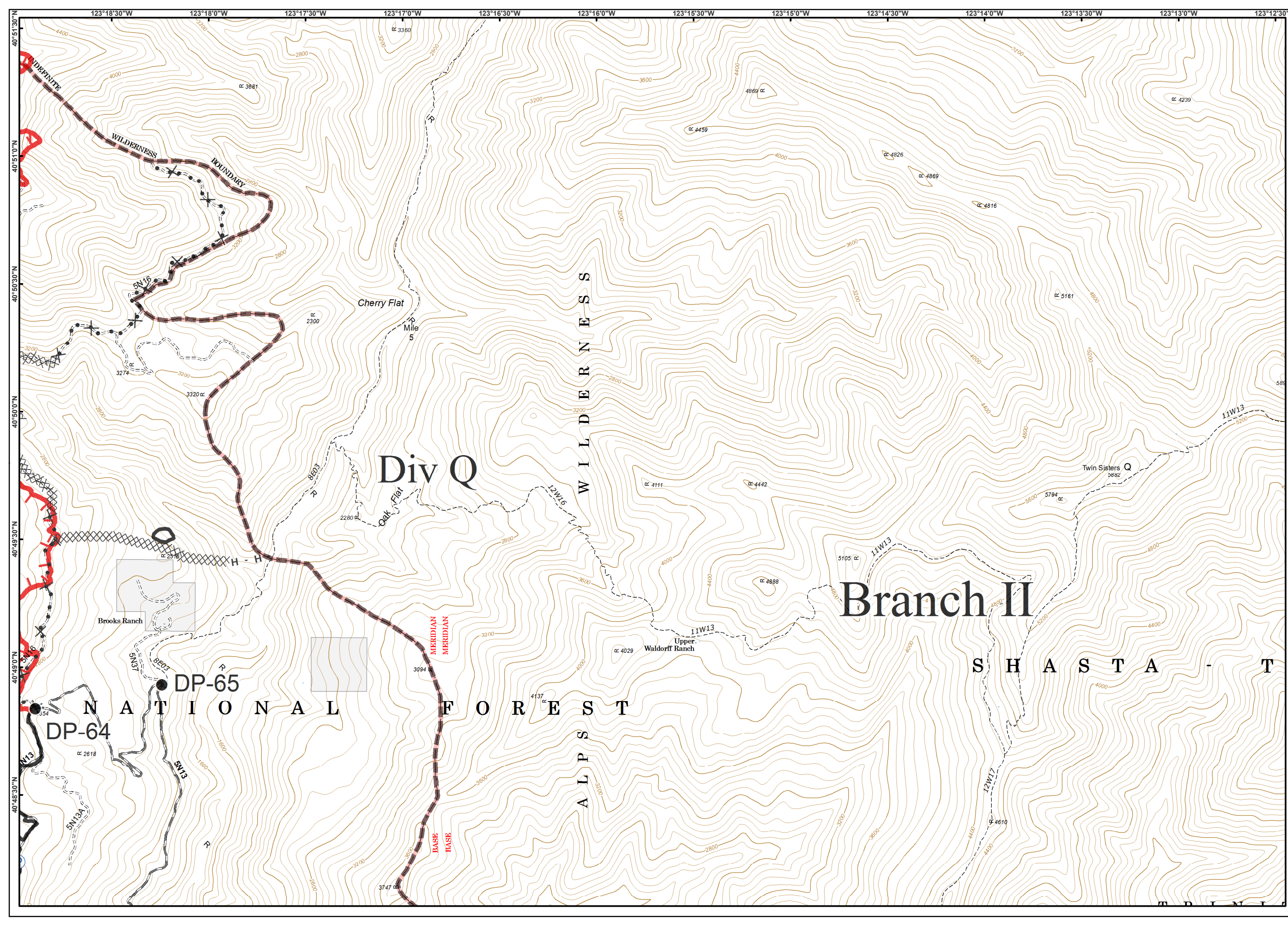
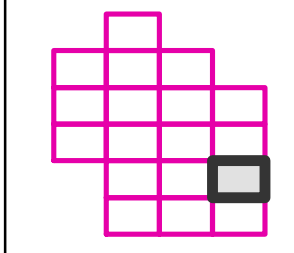
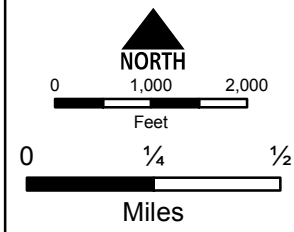
## CA-SHF-002066

08/27/2015



IAP Tiles  
Page - 15

- Drop Point
- Ⓟ Pump
- ▬ Uncontrolled Fire Edge
- ⊗ Completed Dozer Line
- ▬ Completed Line
- H - Hand Line
- ⊗ Proposed Dozer Line
- ⊞ Wilderness



# Branch I

## Div W

## RIVER

## DP-18

## Div T

# Branch II

# River Complex

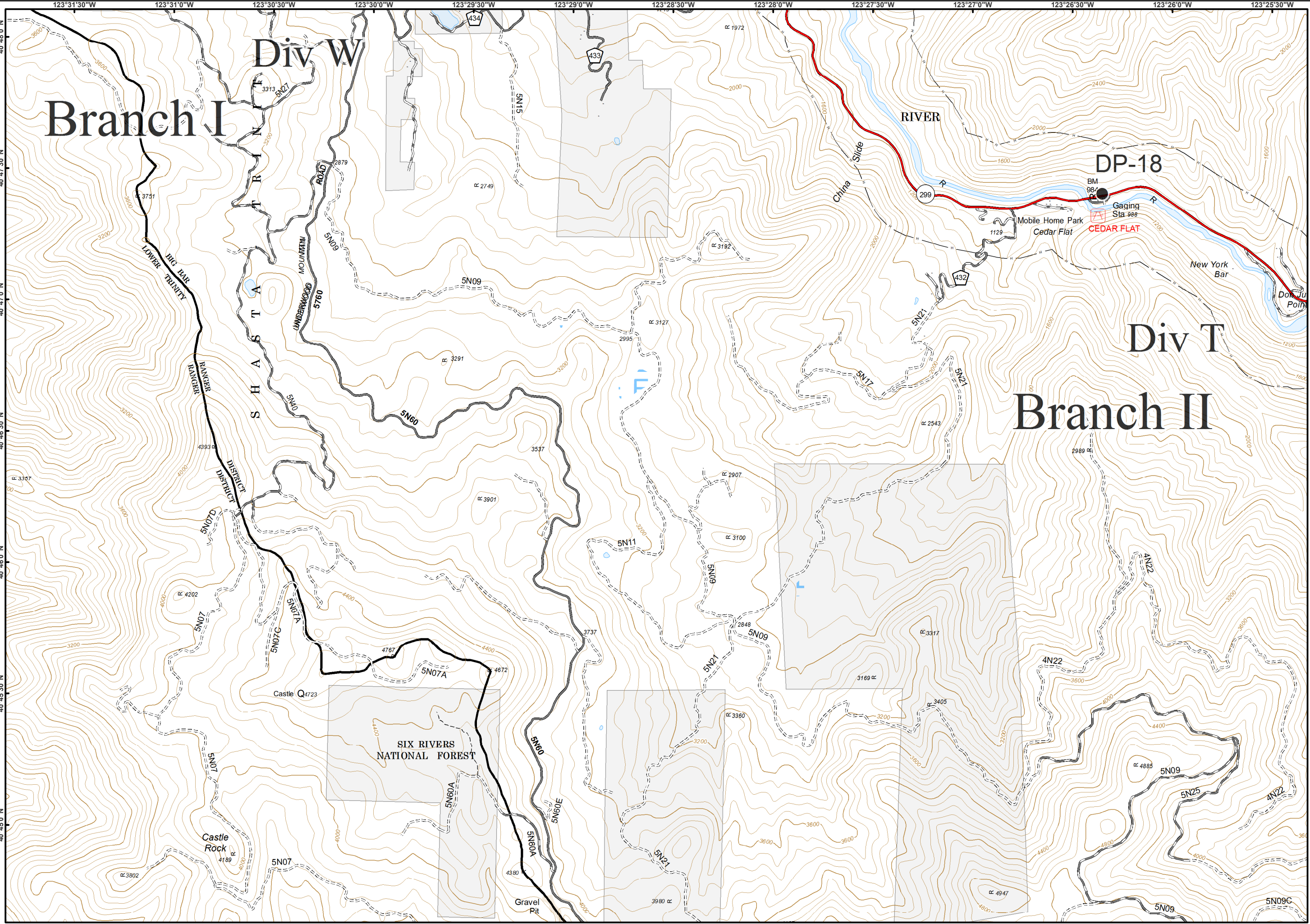
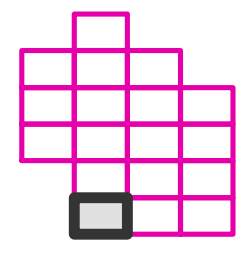
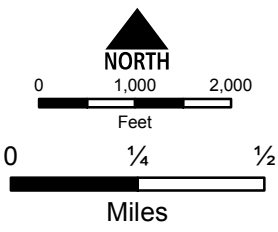
CA-SHF-002066

08/27/2015



IAP Tiles  
Page - 16

● Drop Point

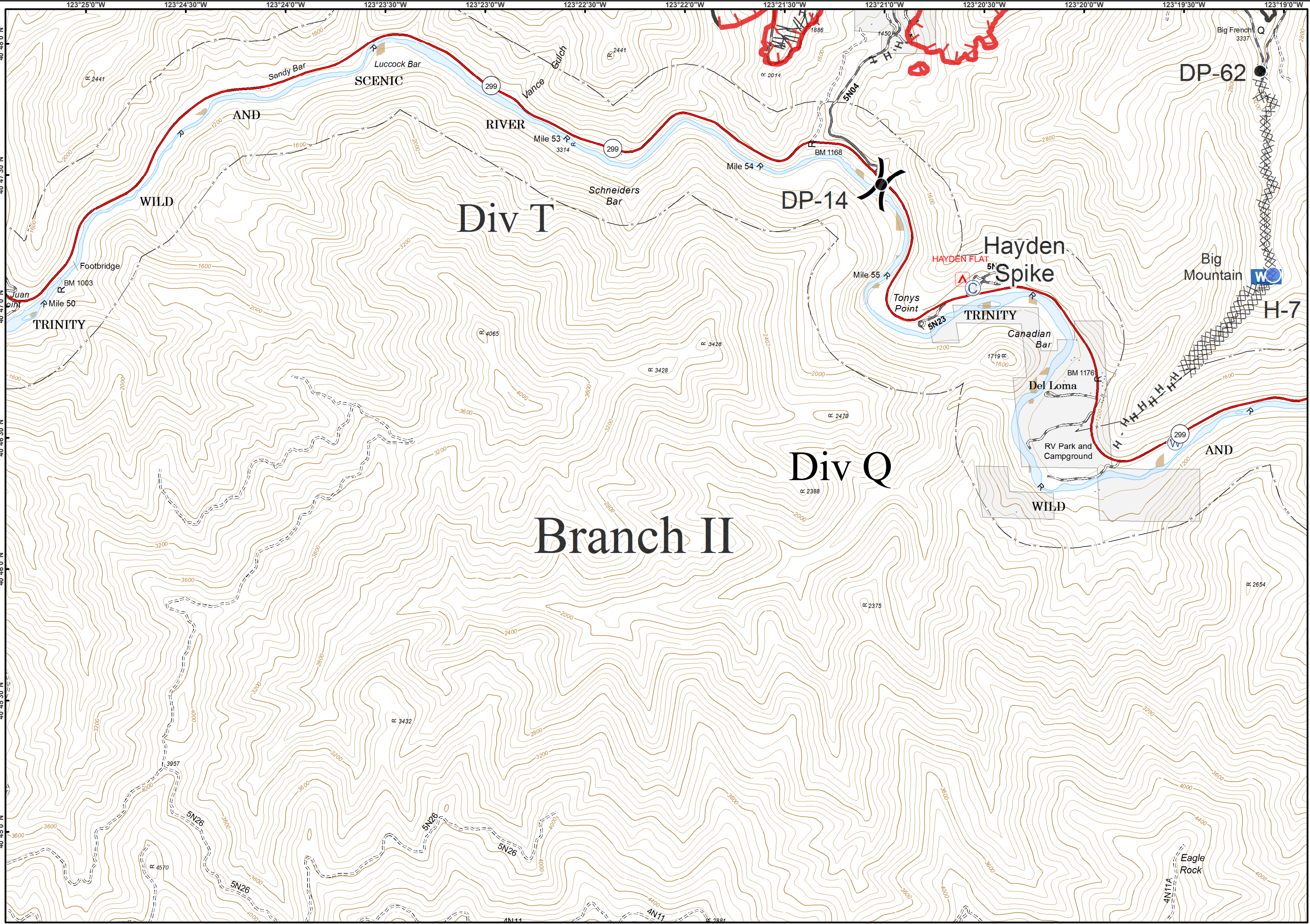
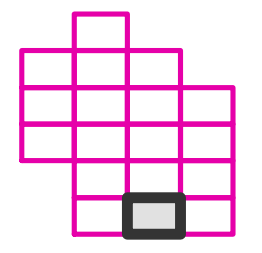
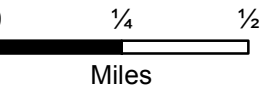
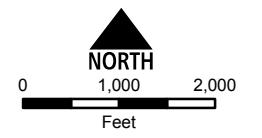
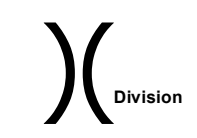




08/27/2015



IAP Tiles  
Page - 17



08/27/2015



IAP Tiles  
Page - 18

