

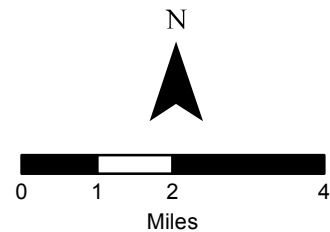
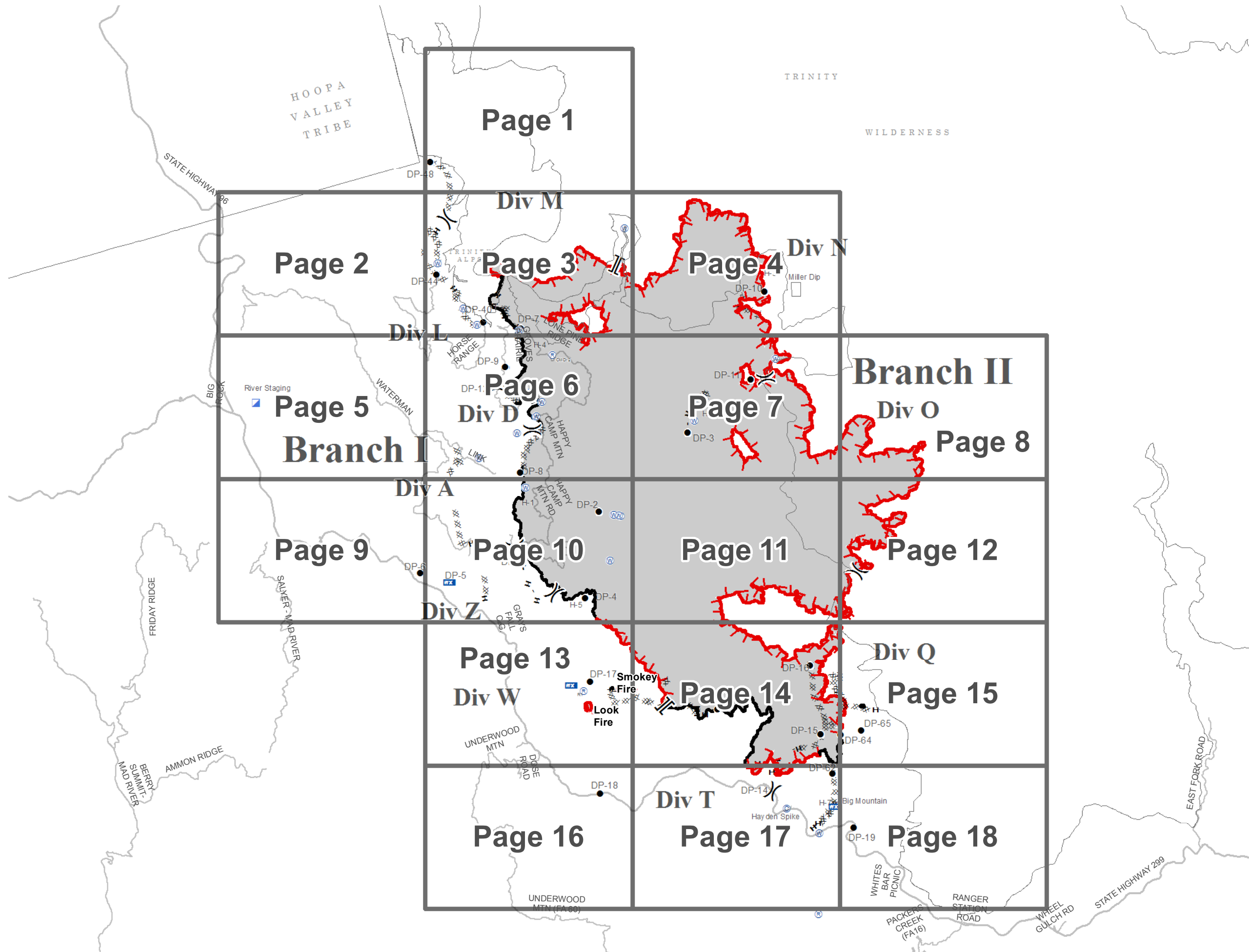
**River Complex
CA-SHF-002066**

August 27, 2015



IAP Index

- Branch
- Division
- Camp
- Drop Point
- Incident Command Post
- Mobile Weather Unit
- Repeater
- Water Source
- Uncontrolled Fire Edge
- Completed Dozer Line
- Completed Line
- Hand Line

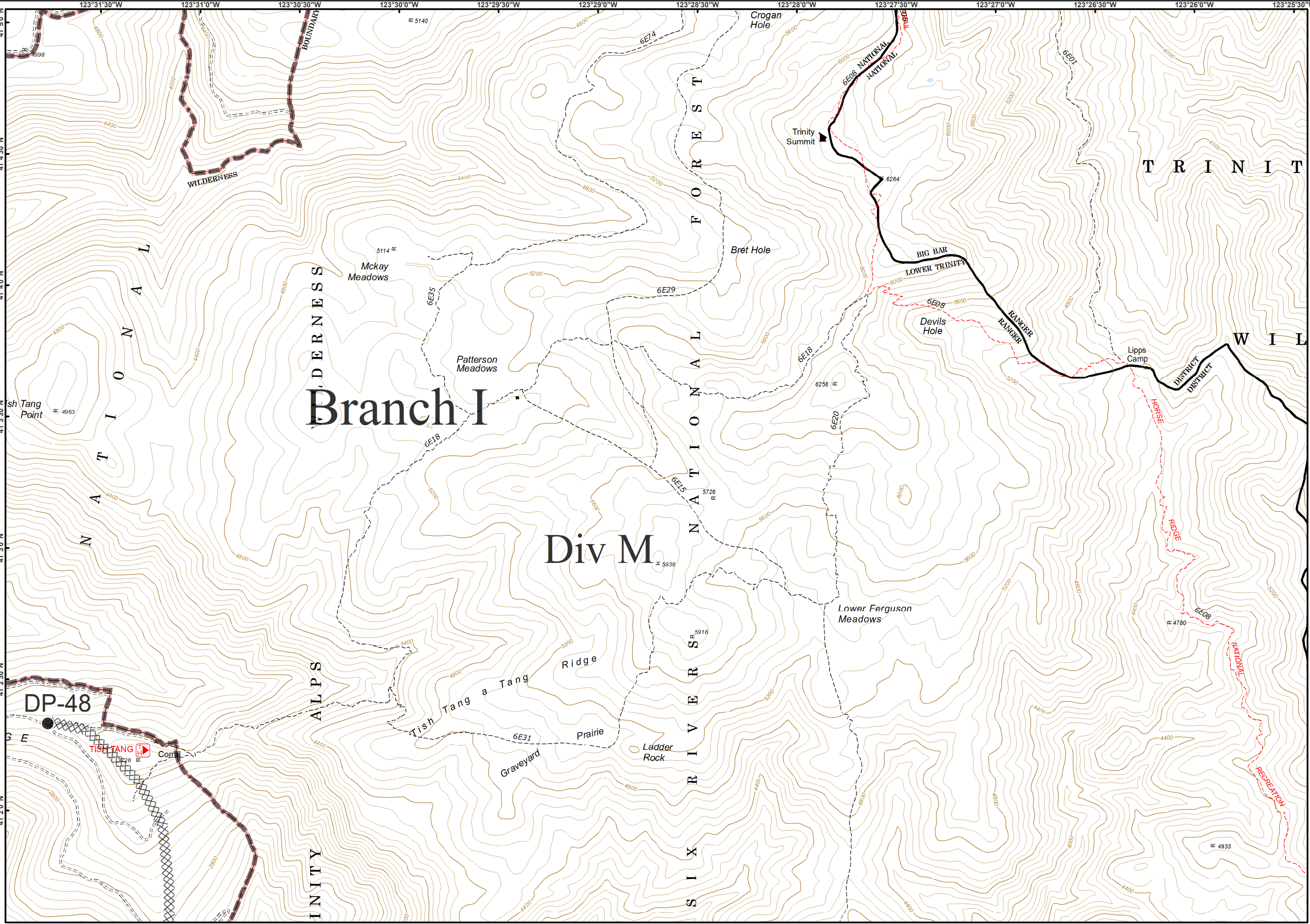
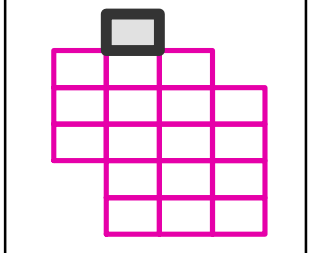
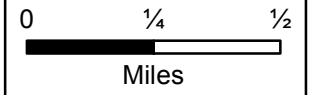
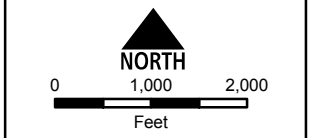


08/27/2015



IAP Tiles
Page - 1

- Drop Point
- XXXX Completed Dozer Line
- W Wilderness

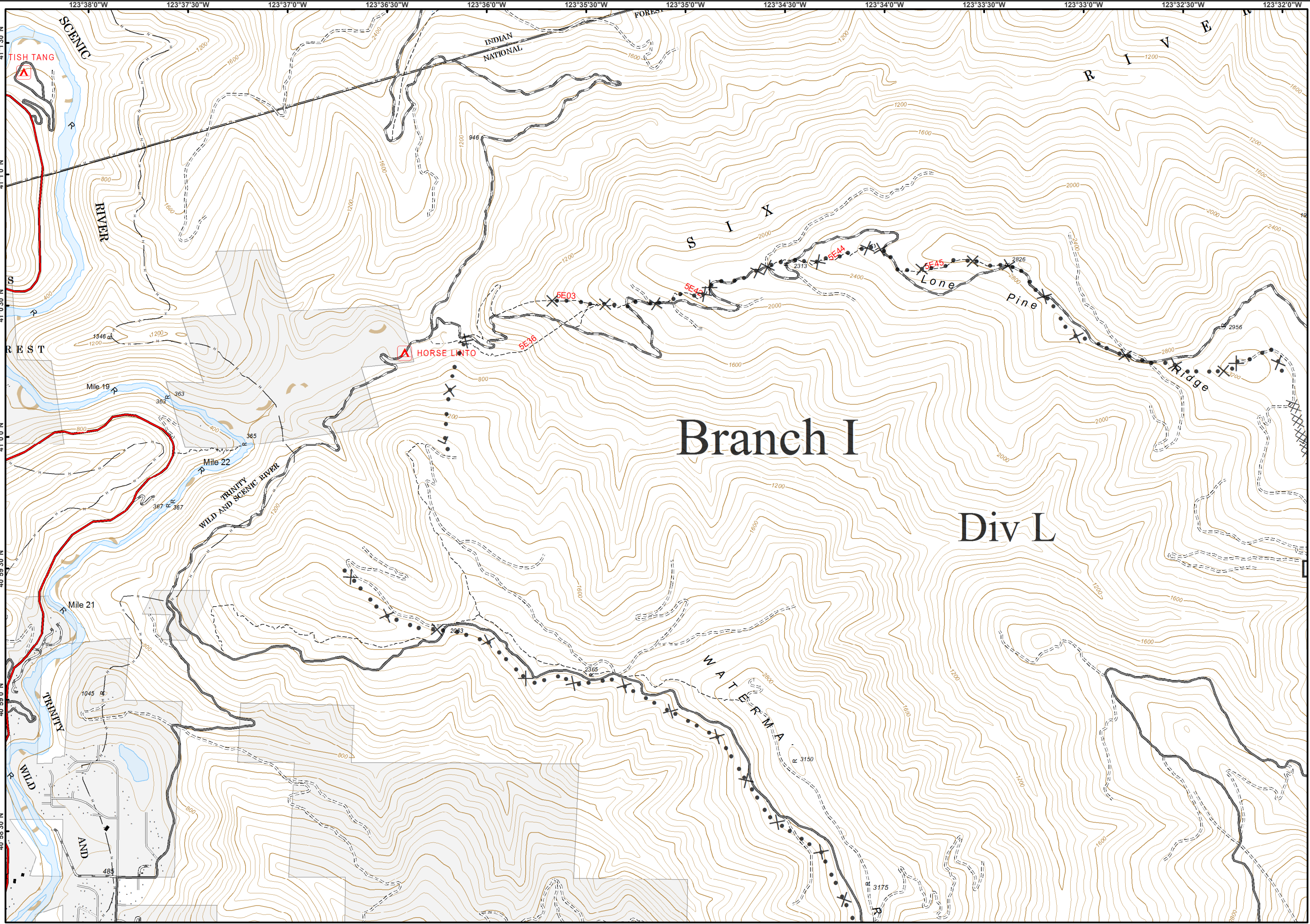
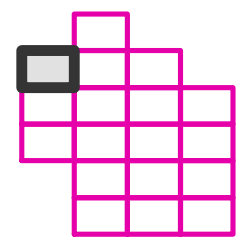
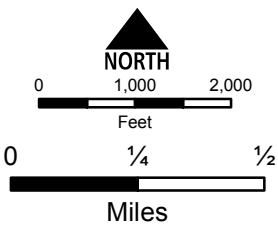


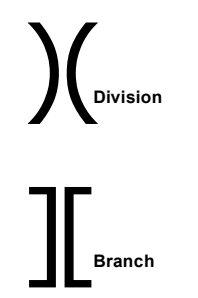
08/27/2015



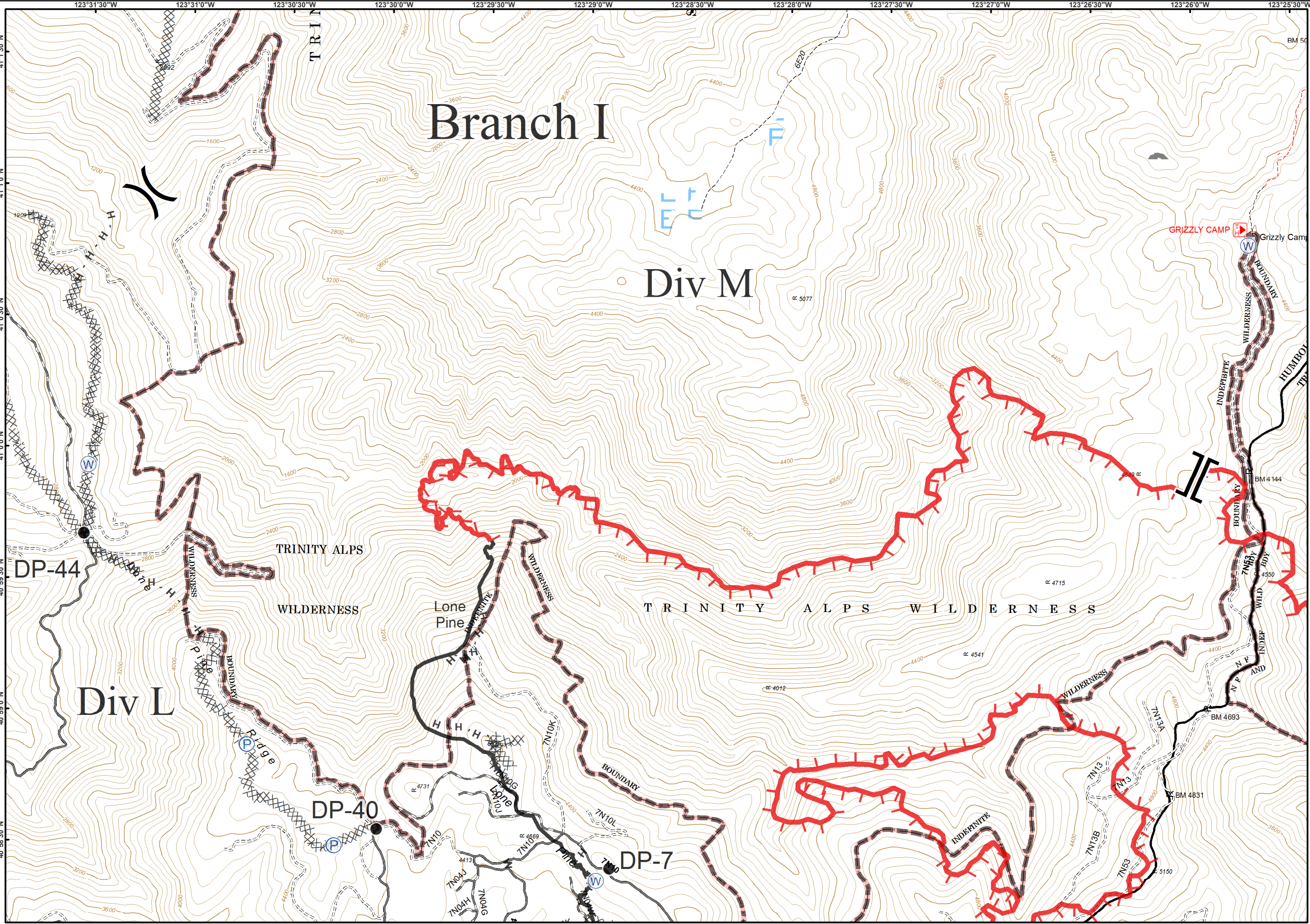
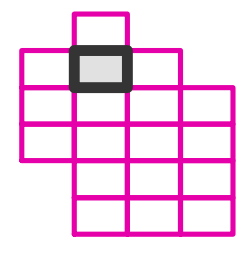
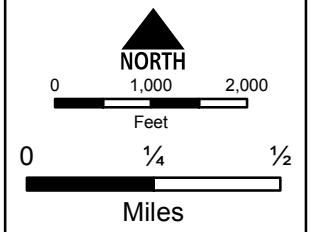
IAP Tiles
Page - 2

- Completed Dozer Line
- Proposed Dozer Line





- Drop Point
- P Pump
- W Water Source
- Uncontrolled Fire Edge
- Completed Dozer Line
- Completed Line
- H - Hand Line
- Wilderness

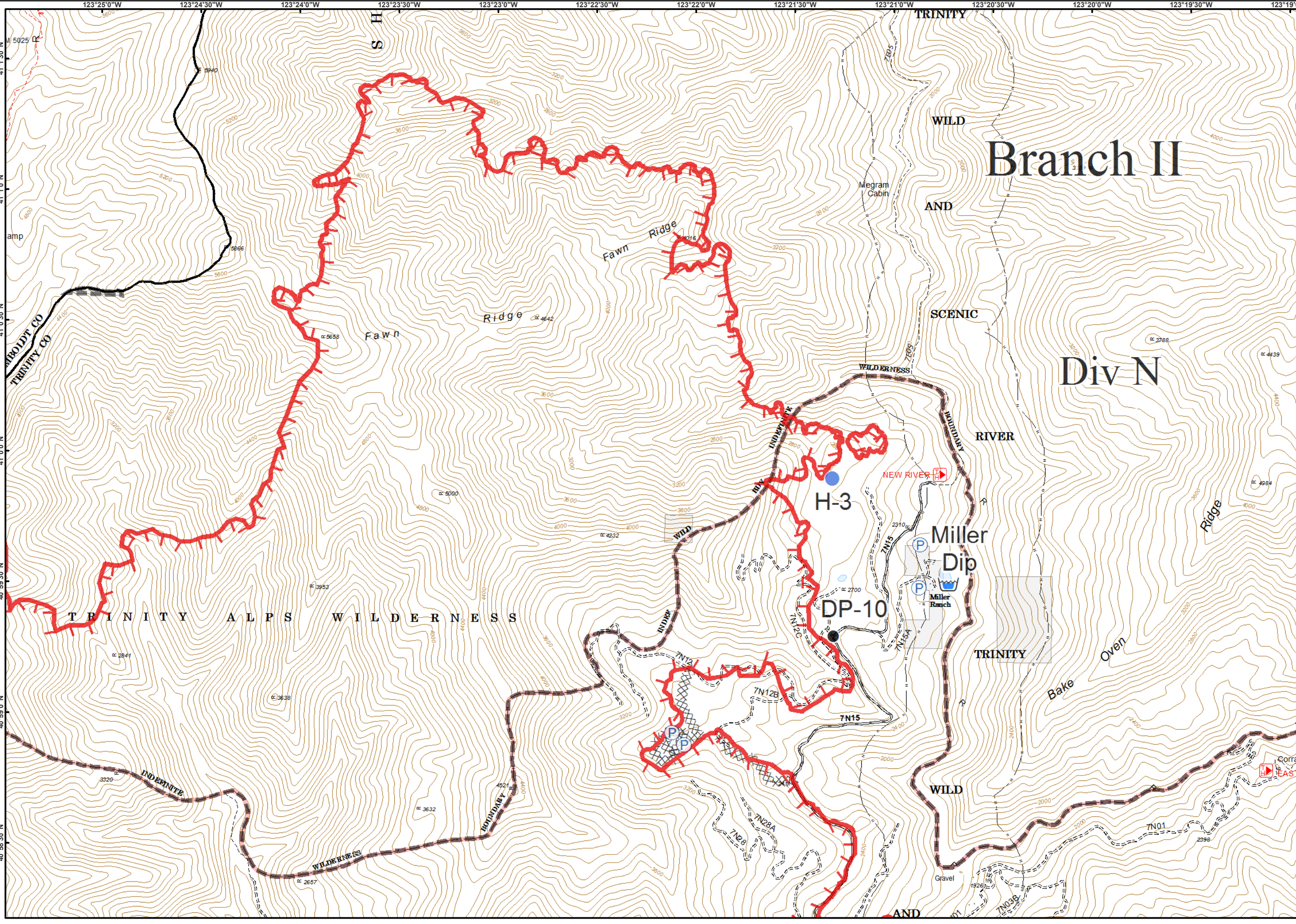
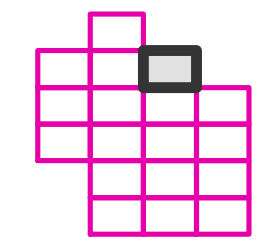
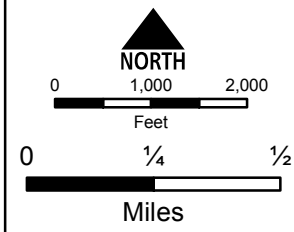


08/27/2015



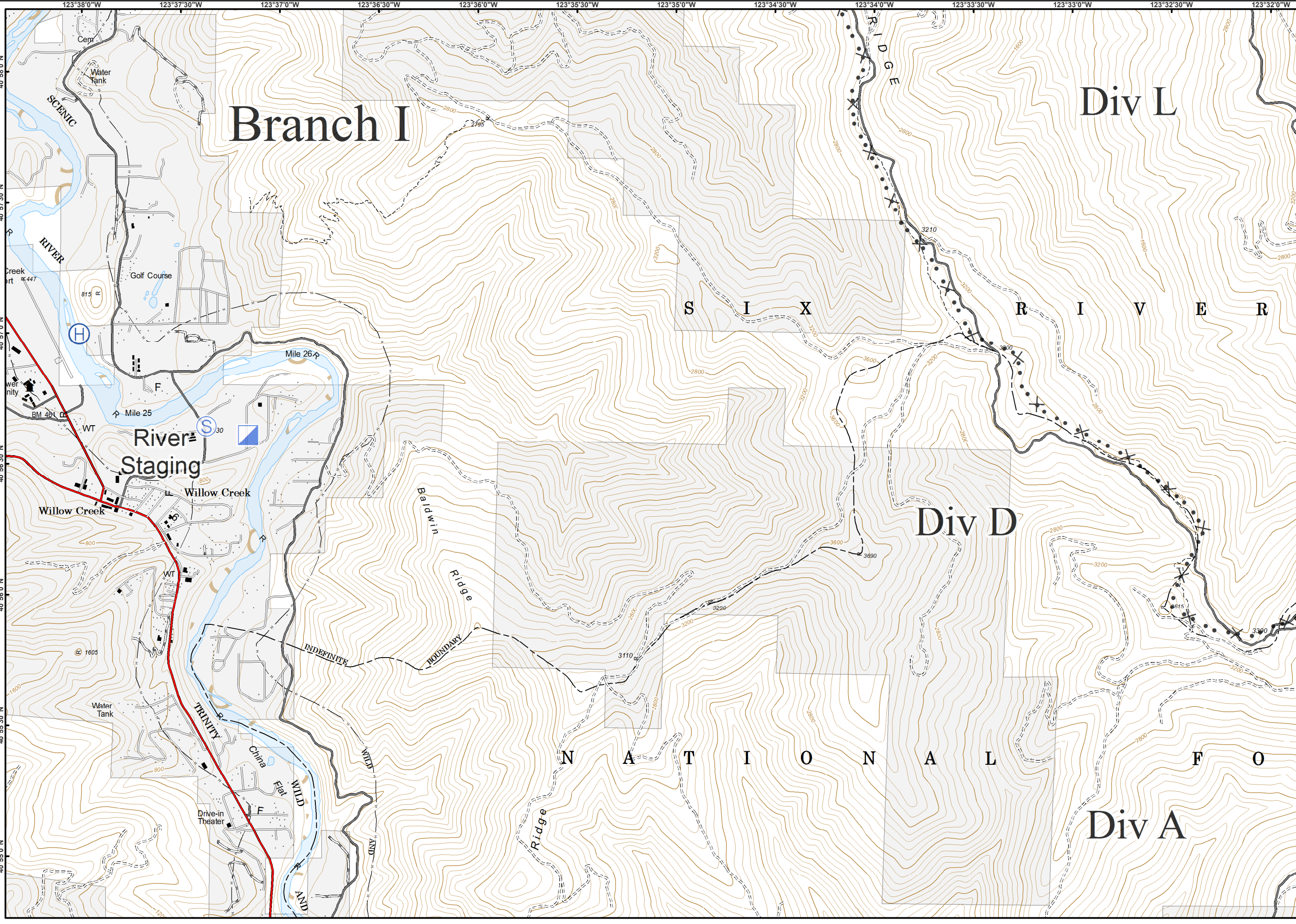
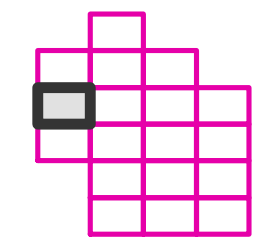
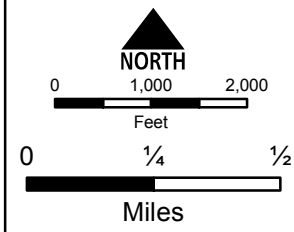
IAP Tiles
Page - 4

- Drop Point
- Helispot
- P Pump
- Retardant/Mud Pit
- Uncontrolled Fire Edge
- Completed Dozer Line
- Wilderness





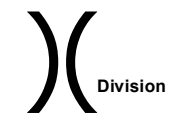
- Helibase
- Incident Command Post
- Staging Area
- Proposed Dozer Line



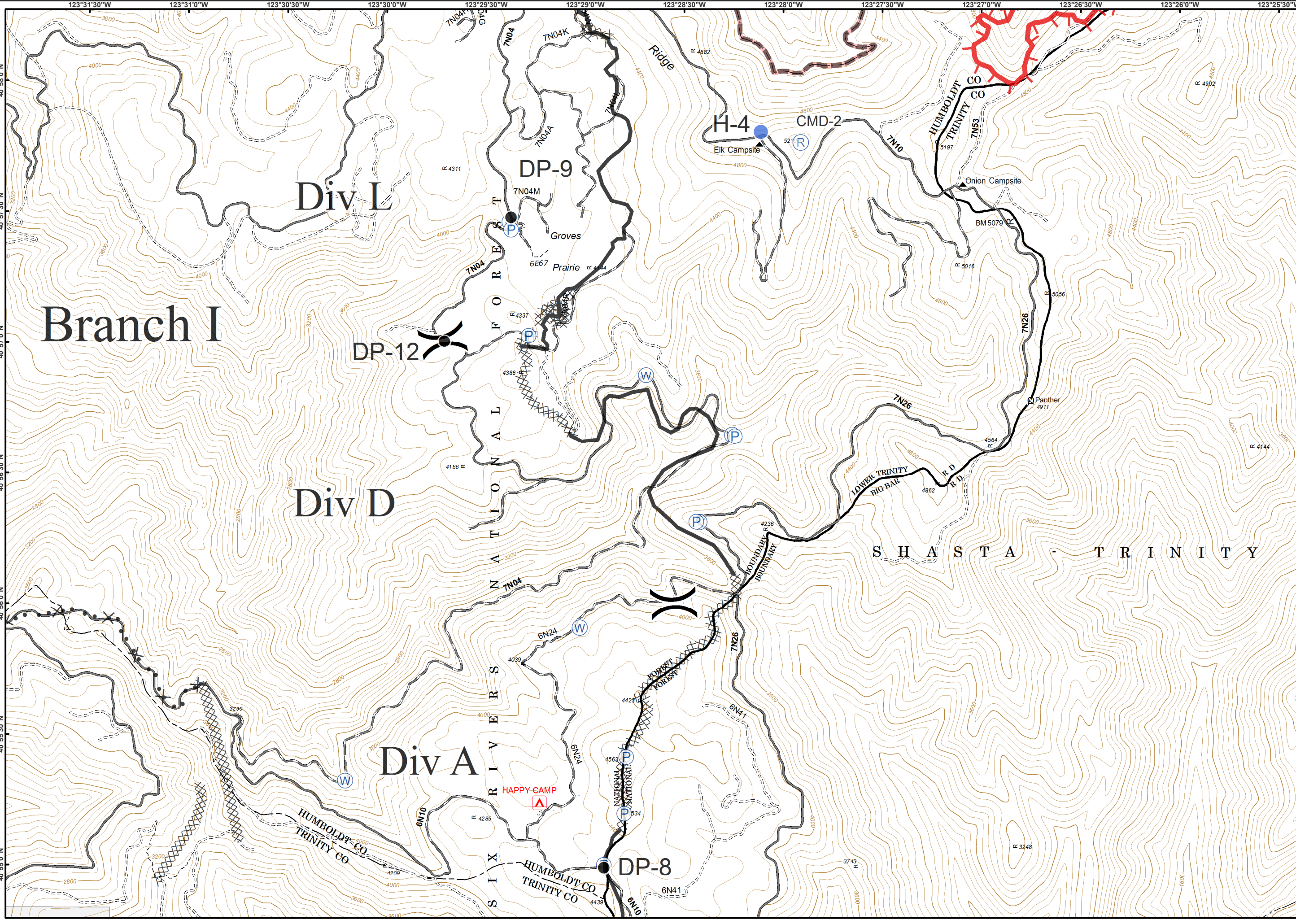
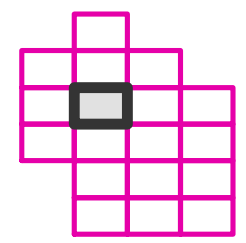
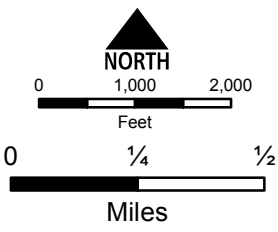
08/27/2015



IAP Tiles
Page - 6



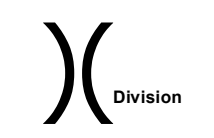
- Drop Point
- Helispot
- P Pump
- R Repeater
- W Water Source
- Uncontrolled Fire Edge
- Completed Dozer Line
- Completed Line
- H - Hand Line
- Proposed Dozer Line
- Wilderness



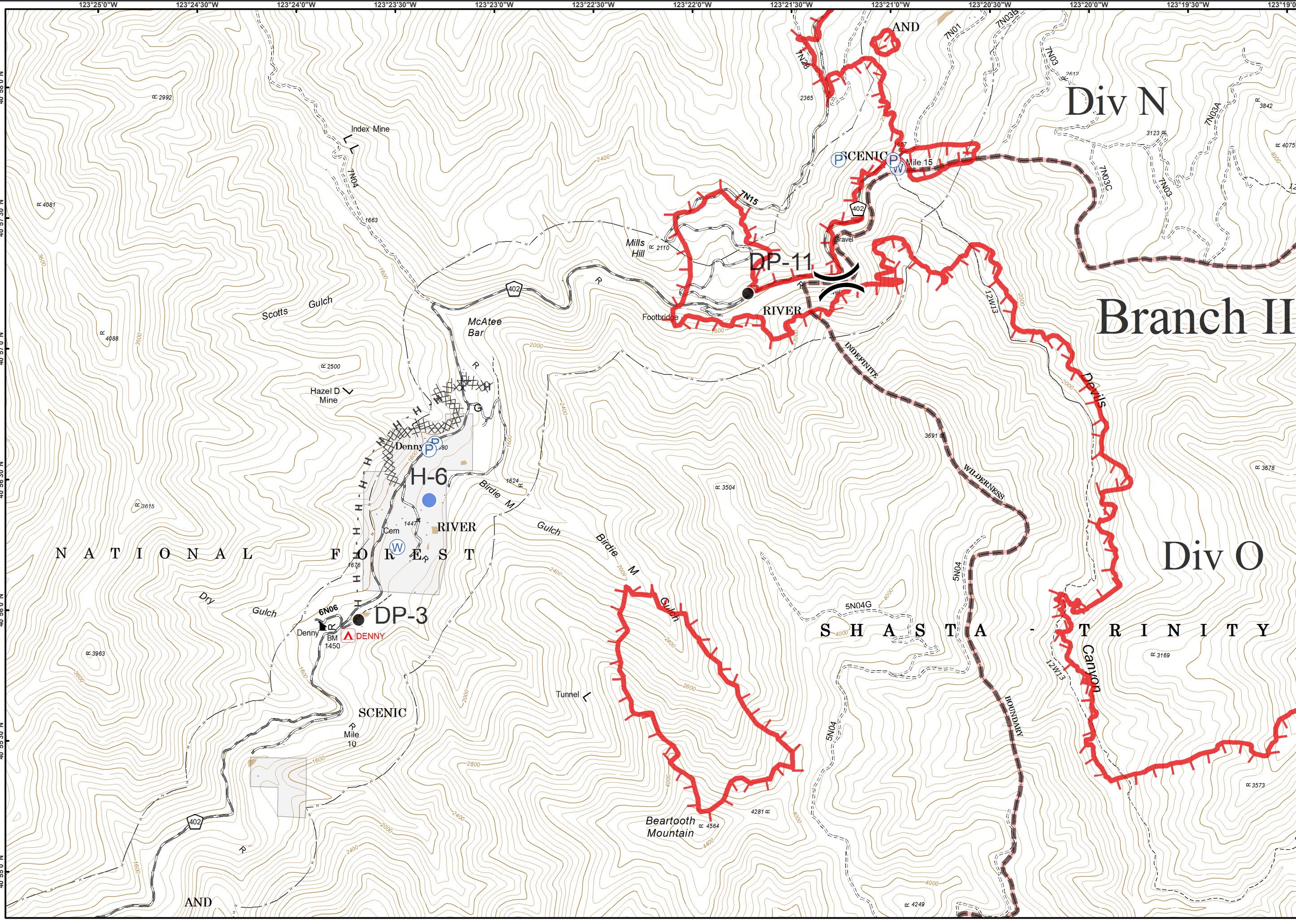
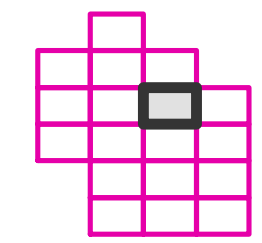
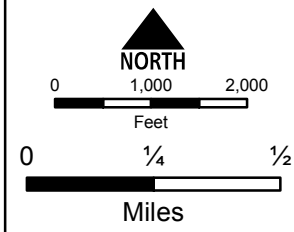
08/27/2015

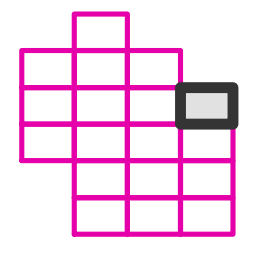
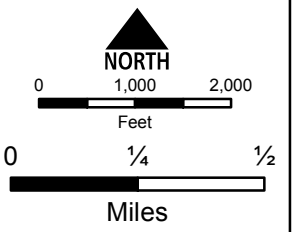
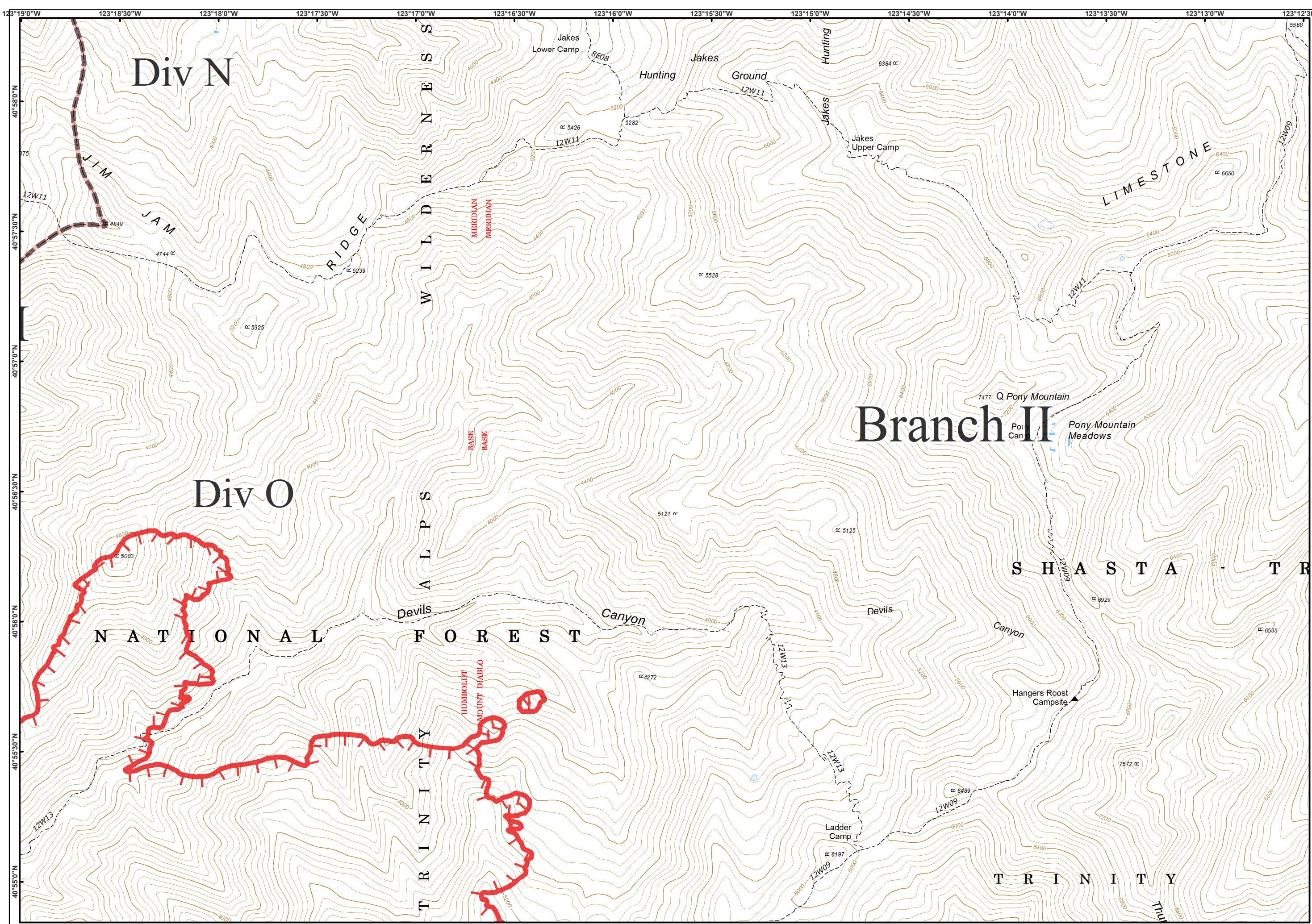


IAP Tiles
Page - 7



- Drop Point
- Helispot
- P Pump
- W Water Source
- Uncontrolled Fire Edge
- Completed Dozer Line
- H - Hand Line
- Wilderness





River Complex

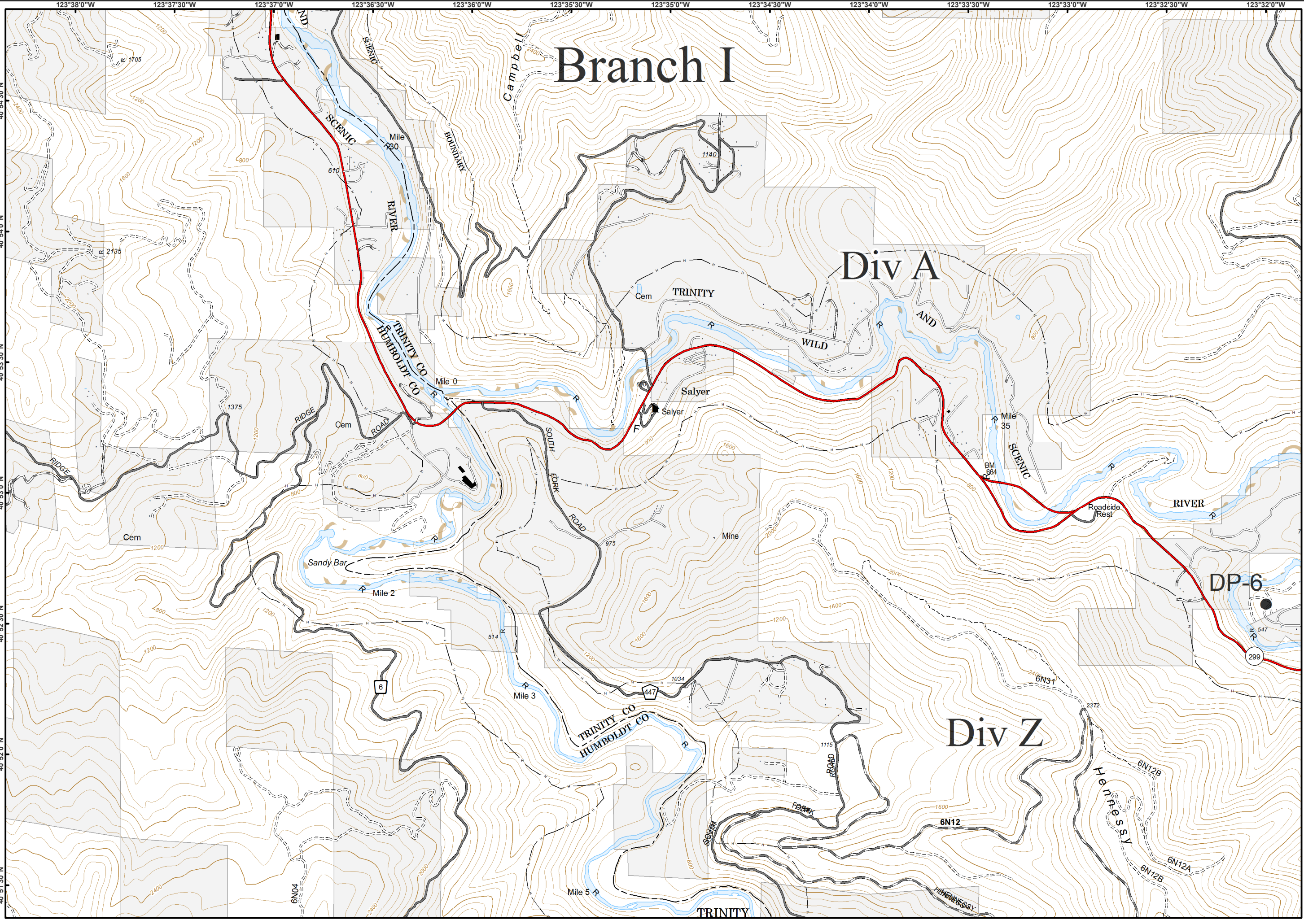
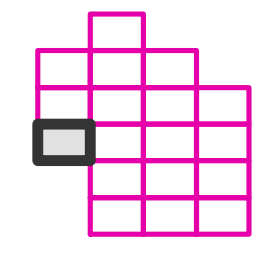
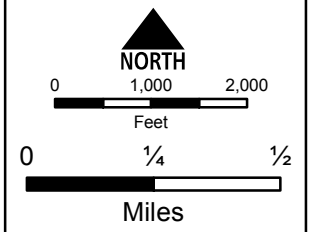
CA-SHF-002066

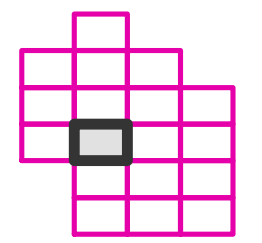
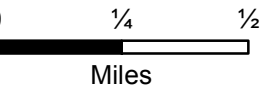
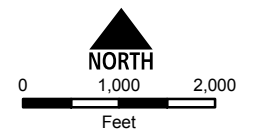
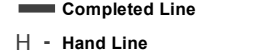
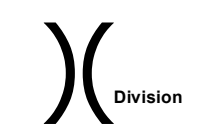
08/27/2015



IAP Tiles
Page - 9

● Drop Point





Branch I

Div A

Div Z

Div W

H-1

Happy Camp

Mountain

DP-2

Dailey

TRINITY

DP-1

Hoboken

RIVER

DP-5

SCENIC

Bell Flat

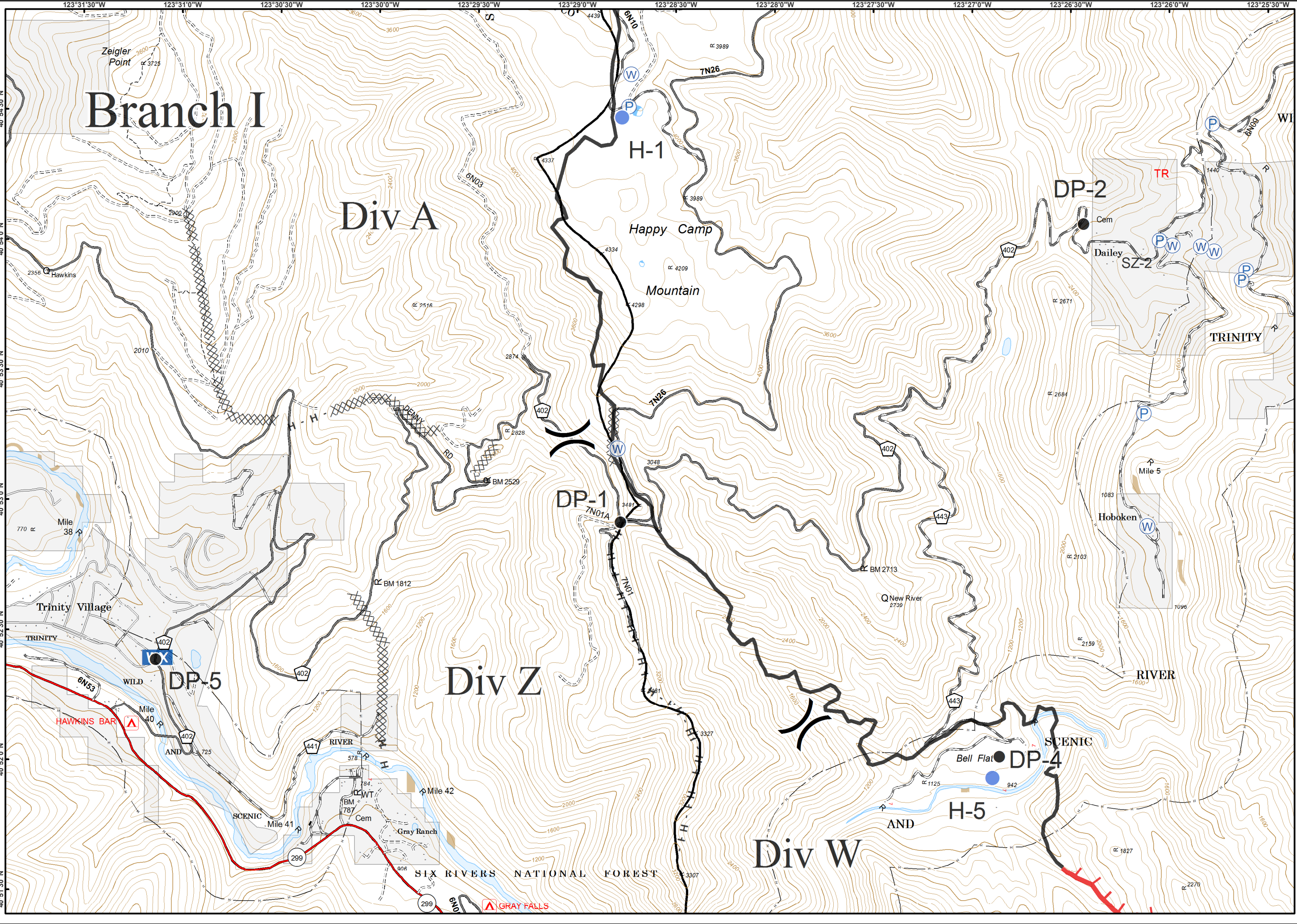
DP-4

AND

H-5

SIX RIVERS NATIONAL FOREST

GRAY FALLS



08/27/2015

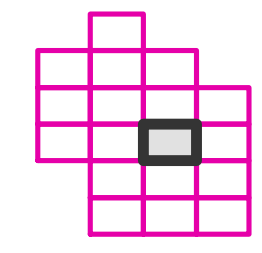
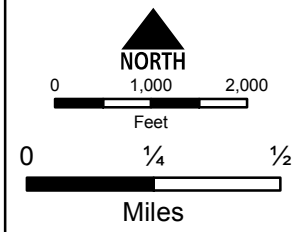
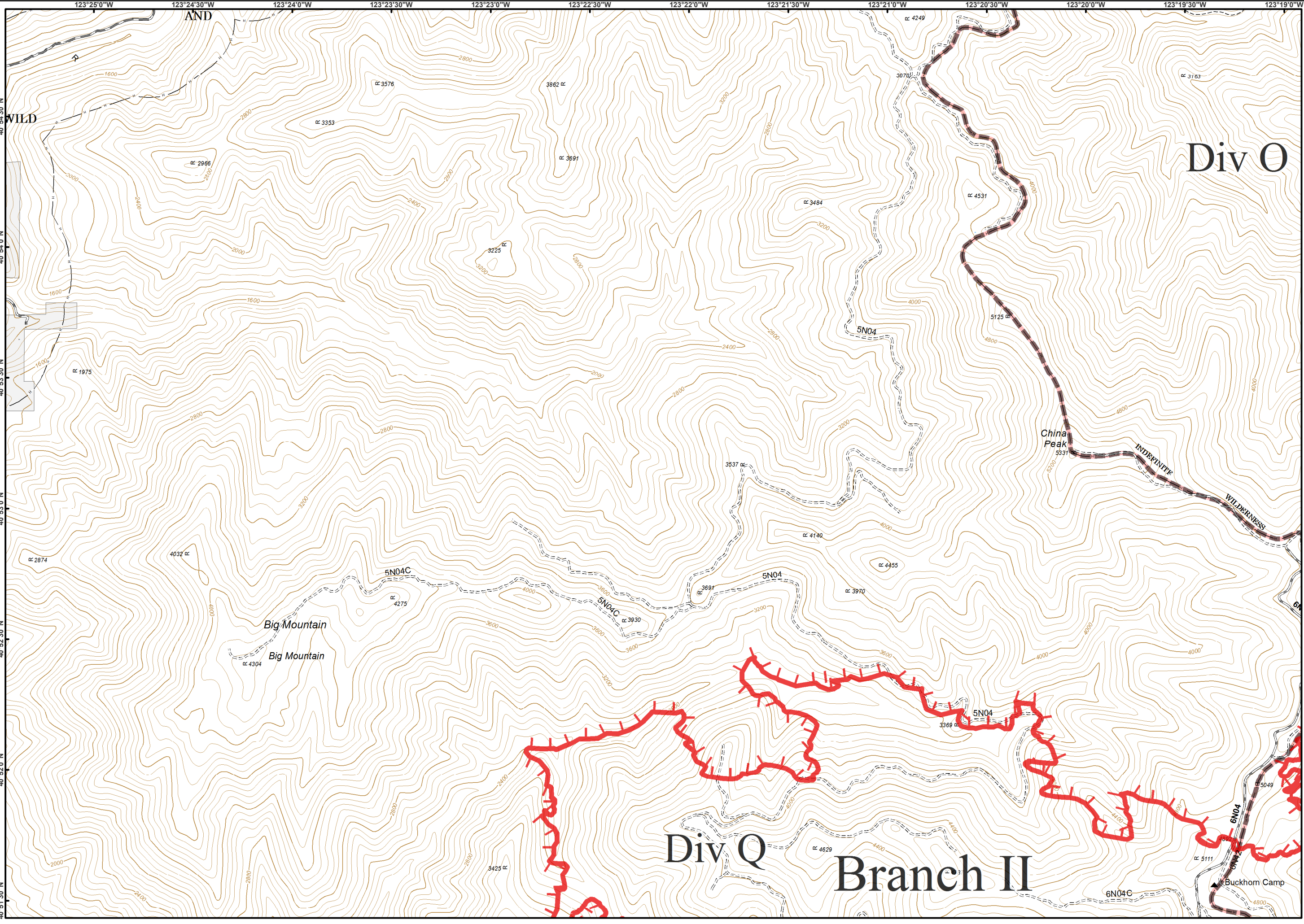


IAP Tiles
Page - 11



Div O

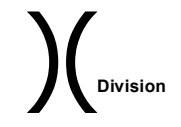
Div Q
Branch II



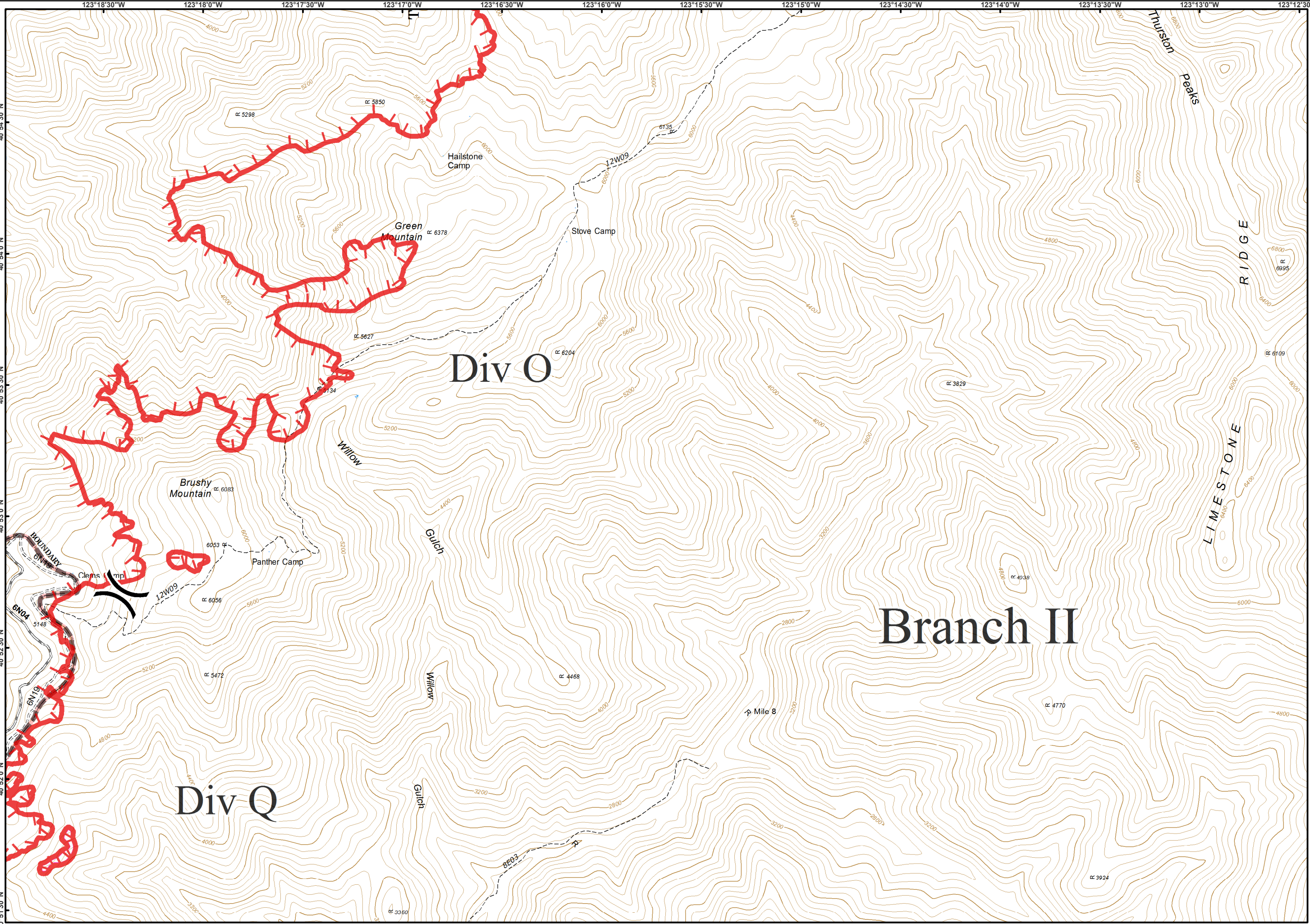
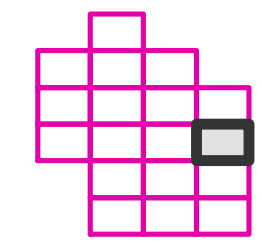
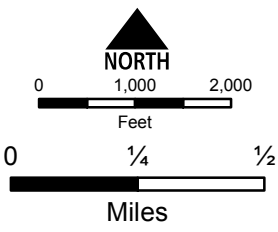
08/27/2015



IAP Tiles
Page - 12

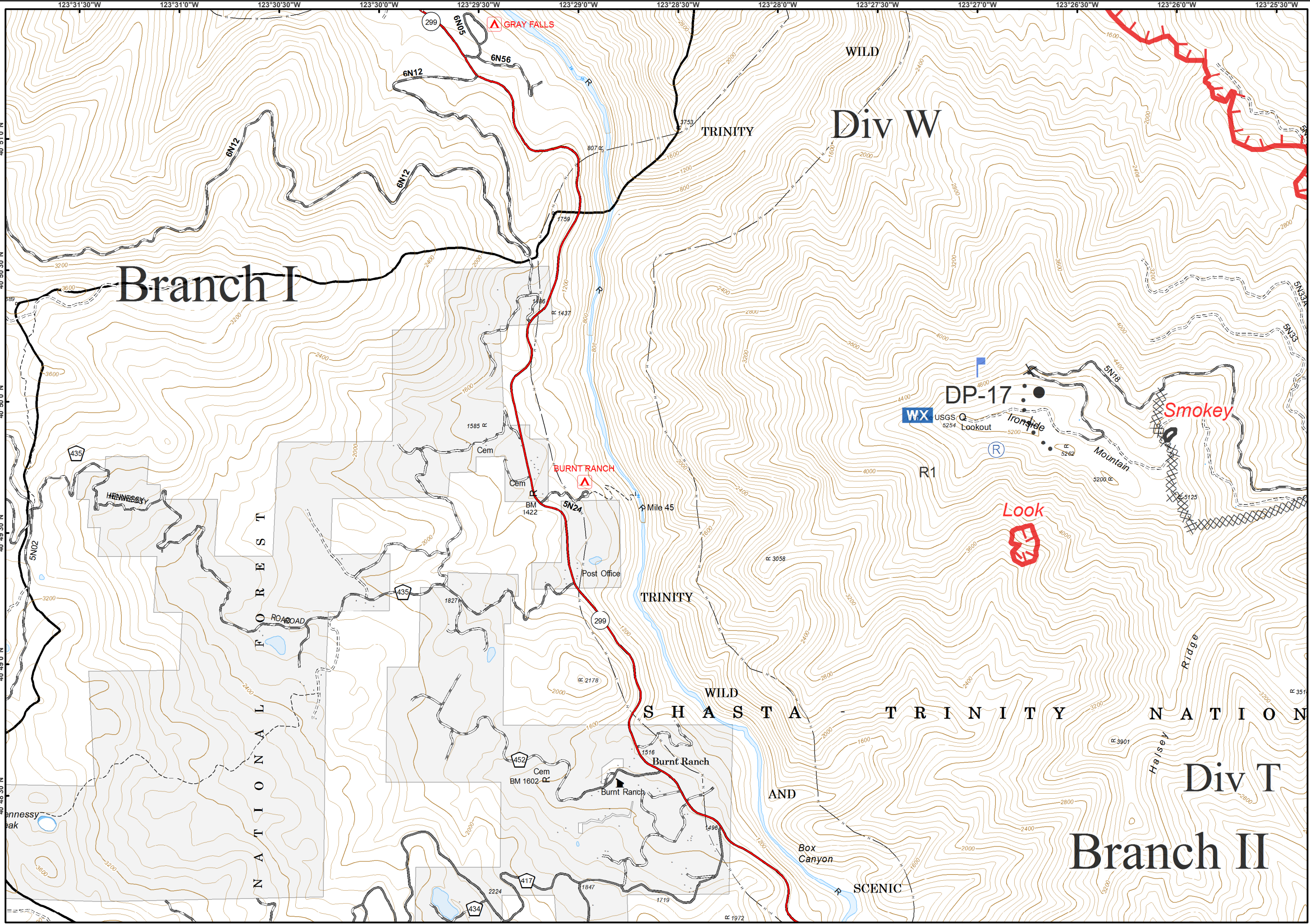
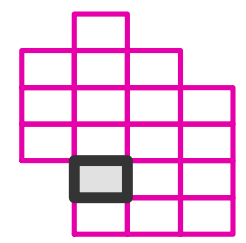
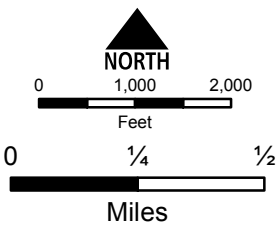


- Uncontrolled Fire Edge
- Unknown
- Wilderness



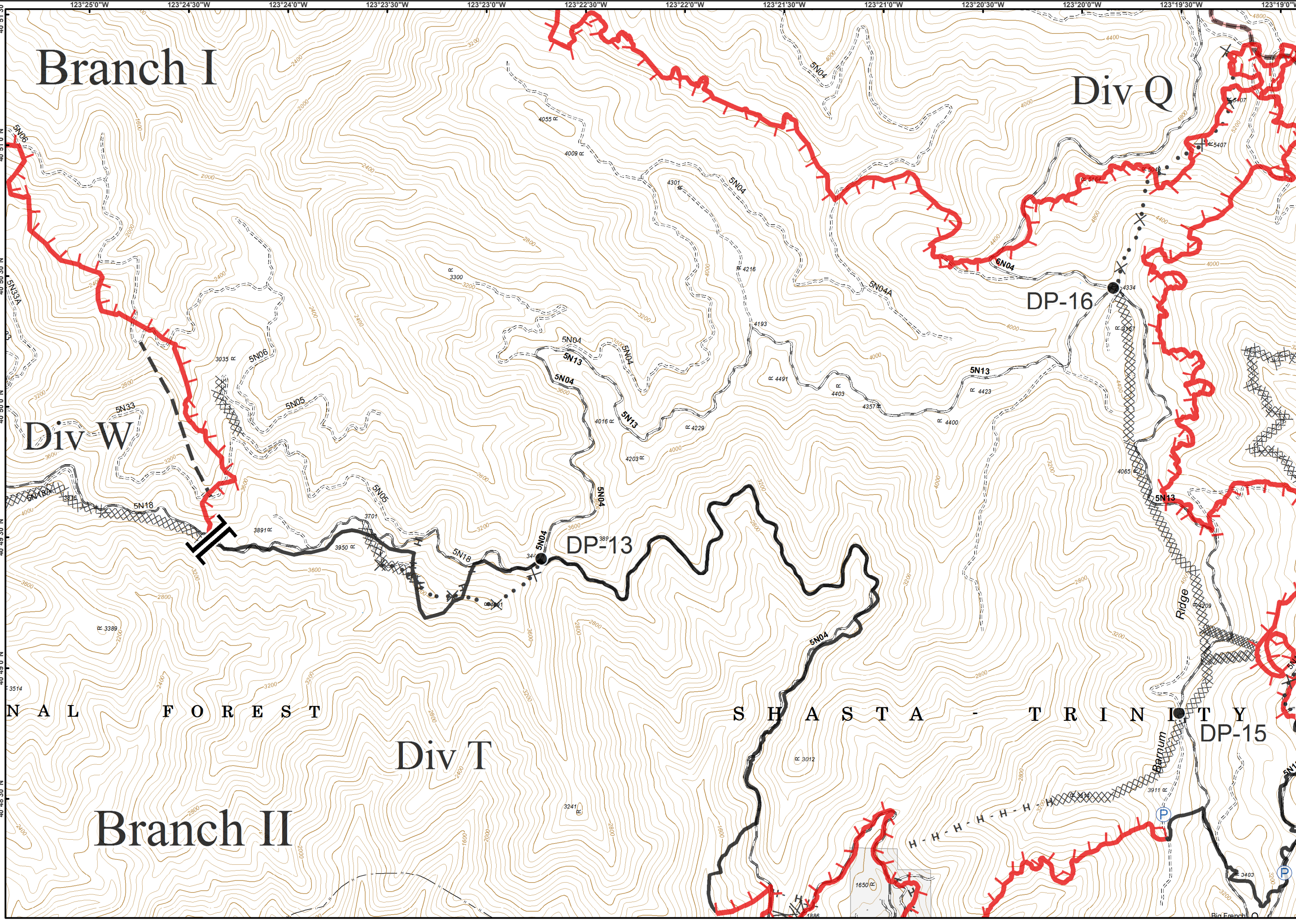
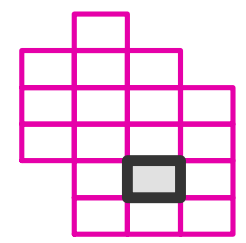
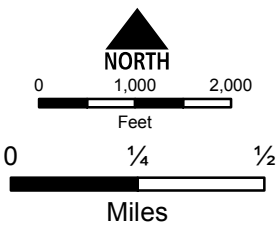


- Drop Point
- ⏏ Lookout
- WX Mobile Weather Unit
- Ⓡ Repeater
- ▬ Uncontrolled Fire Edge
- ▨ Completed Dozer Line
- ▬ Completed Line
- ⊗ Proposed Dozer Line





- Drop Point
- P Pump
- Uncontrolled Fire Edge
- Completed Dozer Line
- Completed Line
- H - Hand Line
- Line Break Completed
- Planned Fire Line
- Proposed Dozer Line
- Wilderness



River Complex

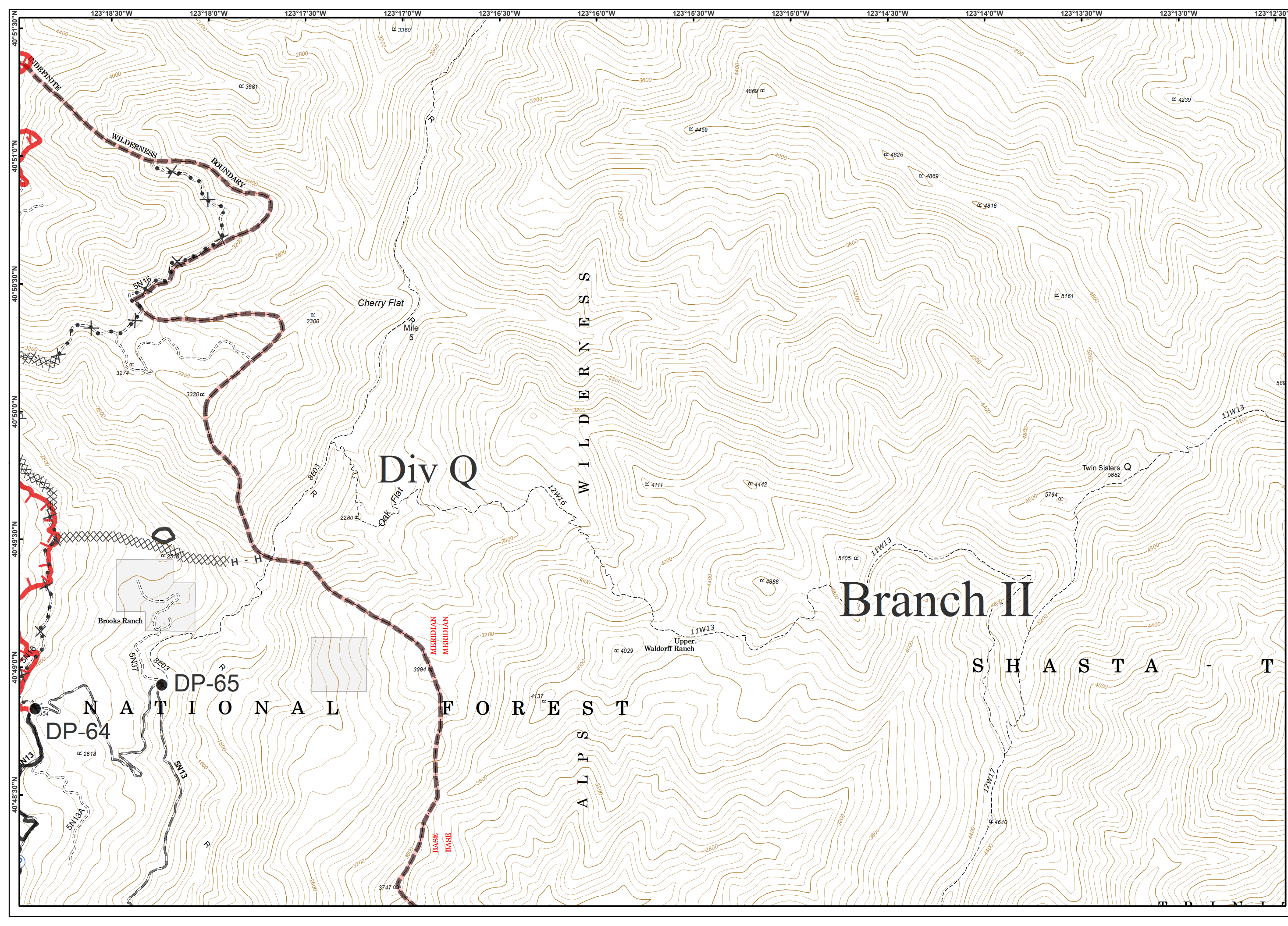
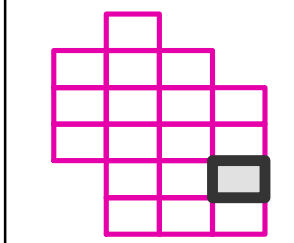
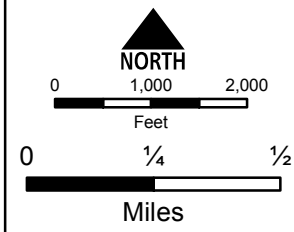
CA-SHF-002066

08/27/2015



IAP Tiles
Page - 15

- Drop Point
- Ⓟ Pump
- ▬ Uncontrolled Fire Edge
- ⊗ Completed Dozer Line
- ▬ Completed Line
- H - Hand Line
- ⊗ Proposed Dozer Line
- ▭ Wilderness



Branch I

Div W

RIVER

DP-18

Div T

Branch II

River Complex

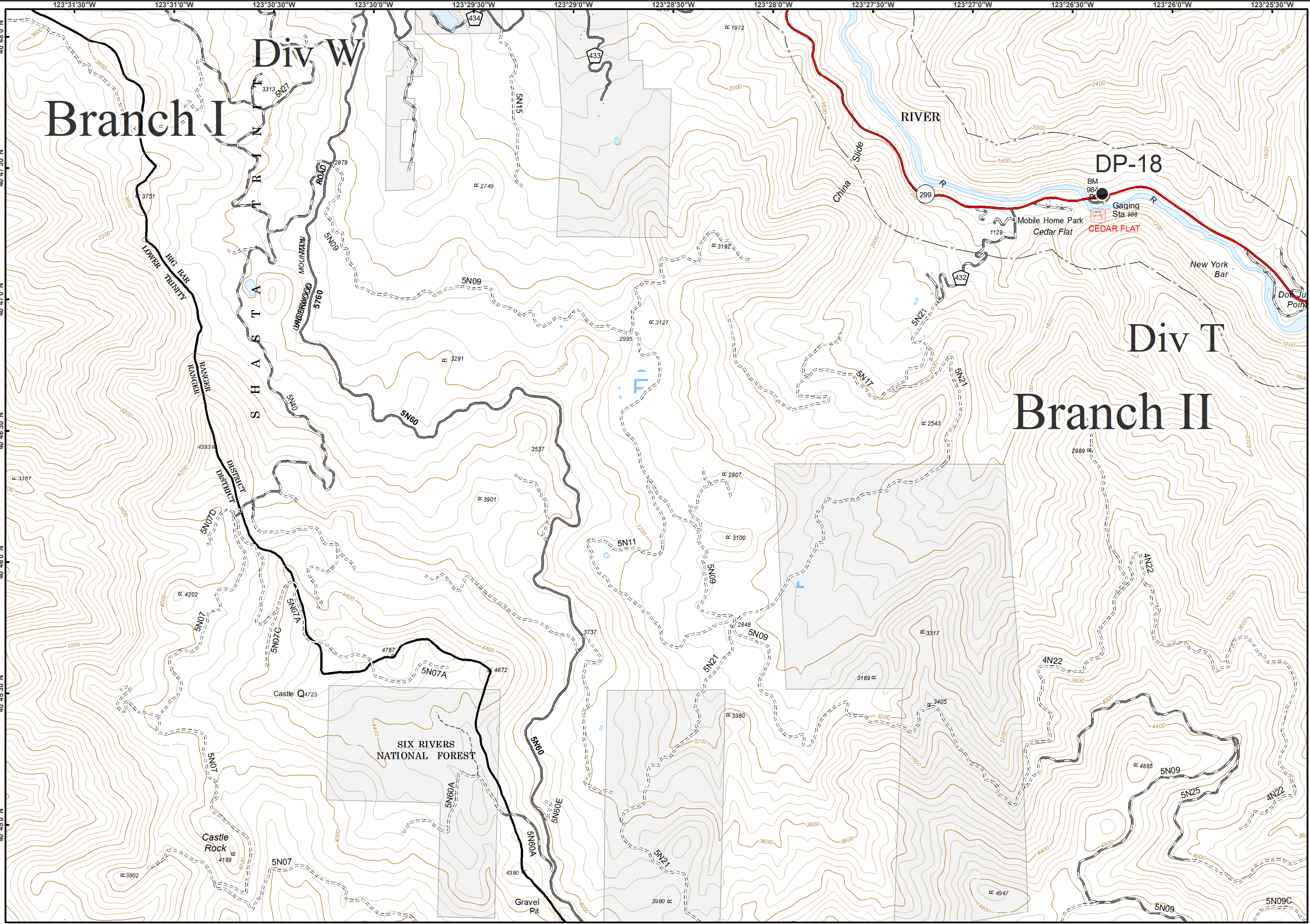
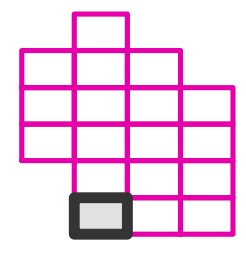
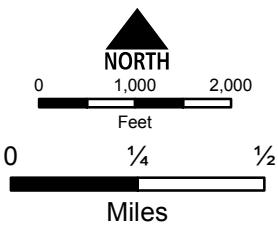
CA-SHF-002066

08/27/2015



IAP Tiles
Page - 16

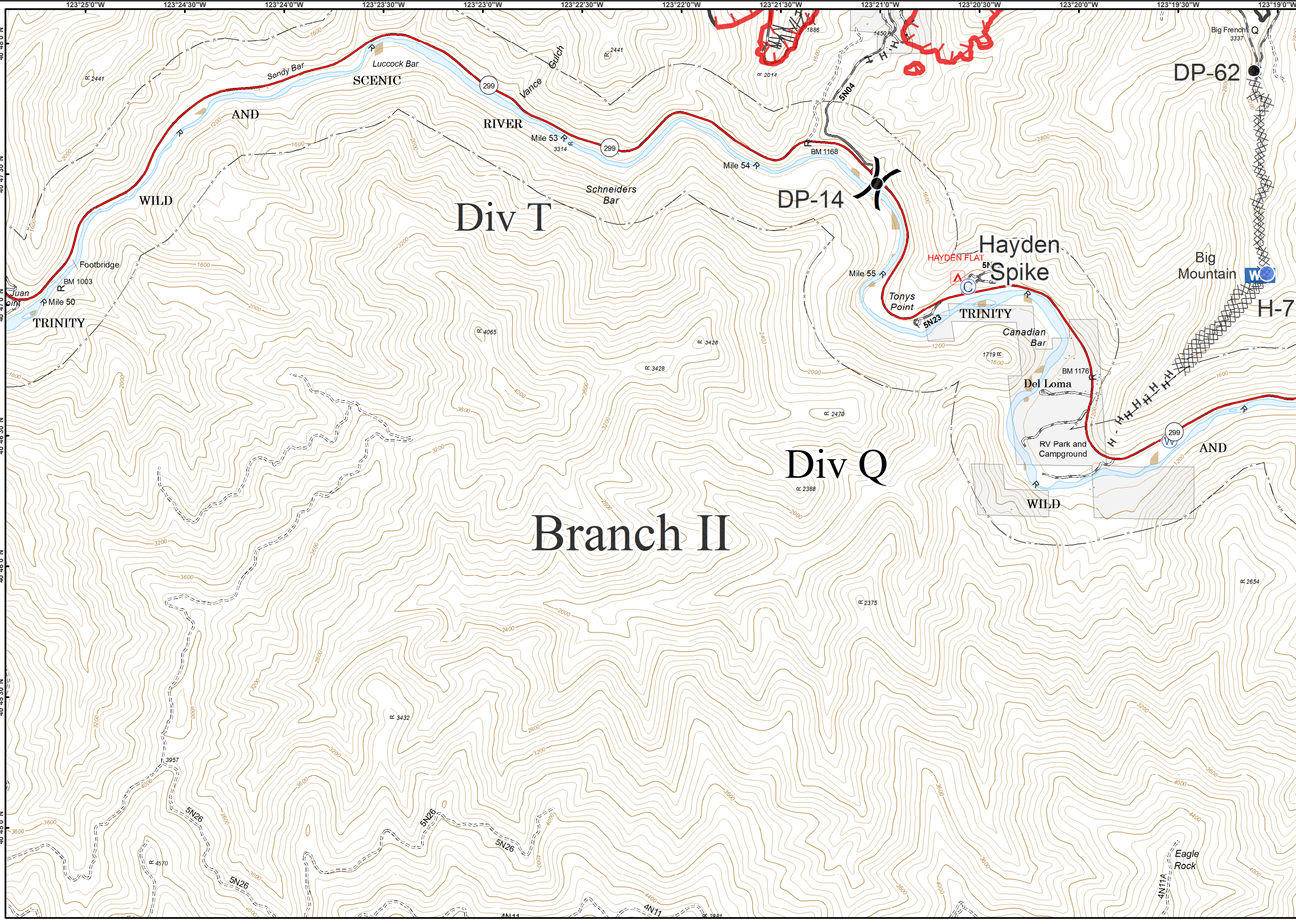
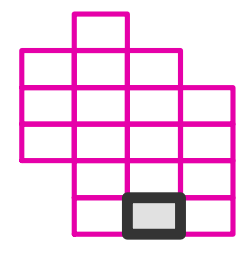
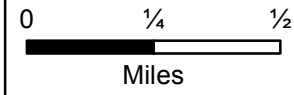
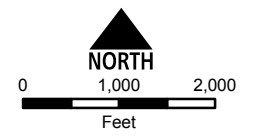
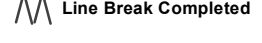
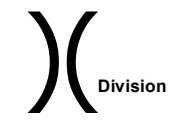
● Drop Point



08/27/2015



IAP Tiles
Page - 17



08/27/2015



IAP Tiles
Page - 18

