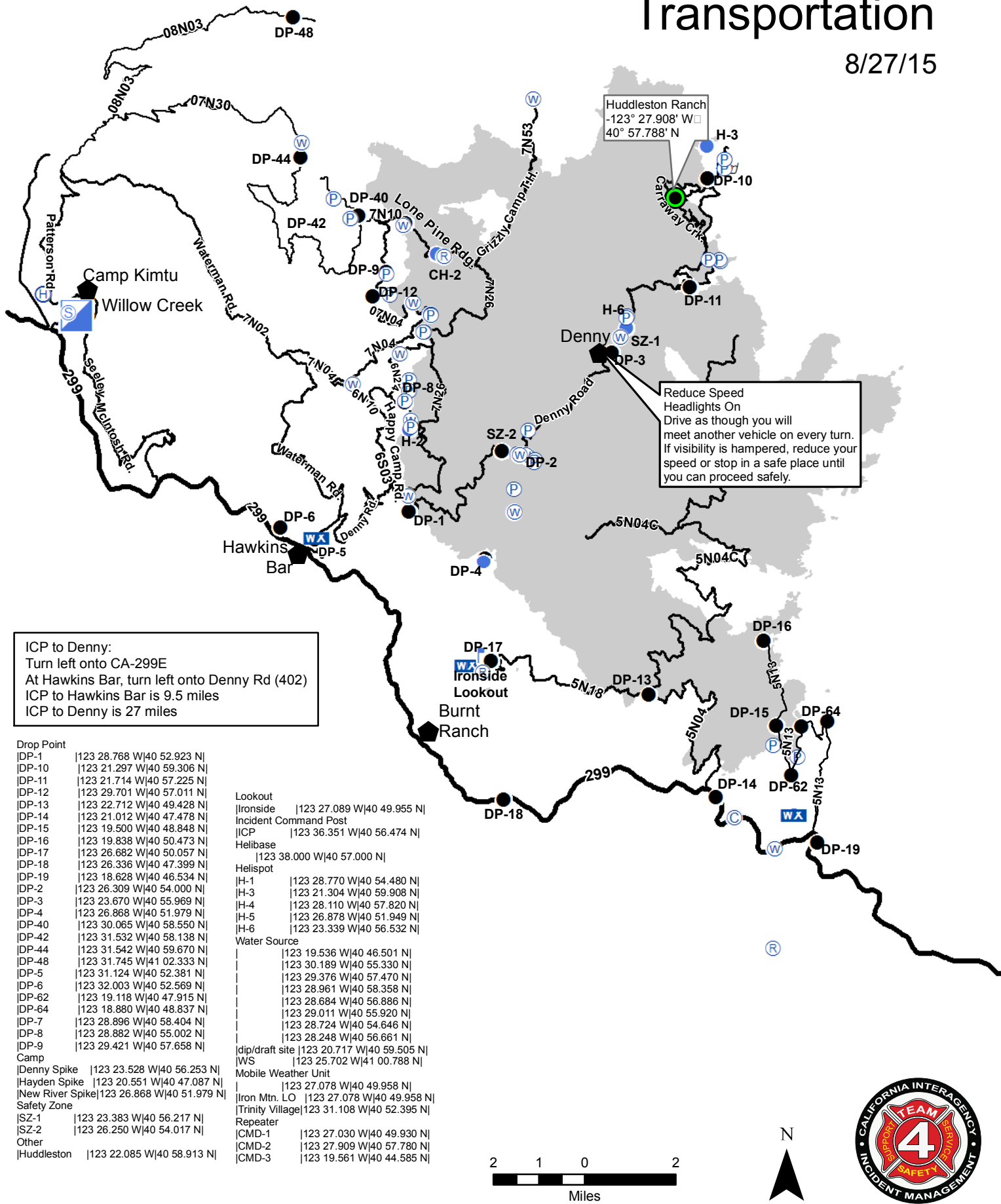


# River Complex Transportation

8/27/15



ICP to Denny:  
 Turn left onto CA-299E  
 At Hawkins Bar, turn left onto Denny Rd (402)  
 ICP to Hawkins Bar is 9.5 miles  
 ICP to Denny is 27 miles

Drop Point	
DP-1	123 28.768 W 40 52.923 N
DP-10	123 21.297 W 40 59.306 N
DP-11	123 21.714 W 40 57.225 N
DP-12	123 29.701 W 40 57.011 N
DP-13	123 22.712 W 40 49.428 N
DP-14	123 21.012 W 40 47.478 N
DP-15	123 19.500 W 40 48.848 N
DP-16	123 19.838 W 40 50.473 N
DP-17	123 26.682 W 40 50.057 N
DP-18	123 26.336 W 40 47.399 N
DP-19	123 18.628 W 40 46.534 N
DP-2	123 26.309 W 40 54.000 N
DP-3	123 23.670 W 40 55.969 N
DP-4	123 26.868 W 40 51.979 N
DP-40	123 30.065 W 40 58.550 N
DP-42	123 31.532 W 40 58.138 N
DP-44	123 31.542 W 40 59.670 N
DP-48	123 31.745 W 41 02.333 N
DP-5	123 31.124 W 40 52.381 N
DP-6	123 32.003 W 40 52.569 N
DP-62	123 19.118 W 40 47.915 N
DP-64	123 18.880 W 40 48.837 N
DP-7	123 28.896 W 40 58.404 N
DP-8	123 28.882 W 40 55.002 N
DP-9	123 29.421 W 40 57.658 N
Camp	
Denny Spike	123 23.528 W 40 56.253 N
Hayden Spike	123 20.551 W 40 47.087 N
New River Spike	123 26.868 W 40 51.979 N
Safety Zone	
SZ-1	123 23.383 W 40 56.217 N
SZ-2	123 26.250 W 40 54.017 N
Other	
Huddleston	123 22.085 W 40 58.913 N

Lookout	
Ironside	123 27.089 W 40 49.955 N
Incident Command Post	
ICP	123 36.351 W 40 56.474 N
Helibase	
	123 38.000 W 40 57.000 N
Helispot	
H-1	123 28.770 W 40 54.480 N
H-3	123 21.304 W 40 59.908 N
H-4	123 28.110 W 40 57.820 N
H-5	123 26.878 W 40 51.949 N
H-6	123 23.339 W 40 56.532 N
Water Source	
	123 19.536 W 40 46.501 N
	123 30.189 W 40 55.330 N
	123 29.376 W 40 57.470 N
	123 28.961 W 40 58.358 N
	123 28.684 W 40 56.886 N
	123 29.011 W 40 55.920 N
	123 28.724 W 40 54.646 N
	123 28.248 W 40 56.661 N
dip/draft site	123 20.717 W 40 59.505 N
IWS	123 25.702 W 41 00.788 N
Mobile Weather Unit	
	123 27.078 W 40 49.958 N
Iron Mtn. LO	123 27.078 W 40 49.958 N
Trinity Village	123 31.108 W 40 52.395 N
Repeater	
CMD-1	123 27.030 W 40 49.930 N
CMD-2	123 27.909 W 40 57.780 N
CMD-3	123 19.561 W 40 44.585 N

