

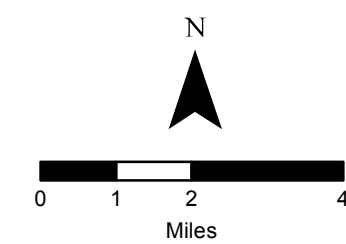
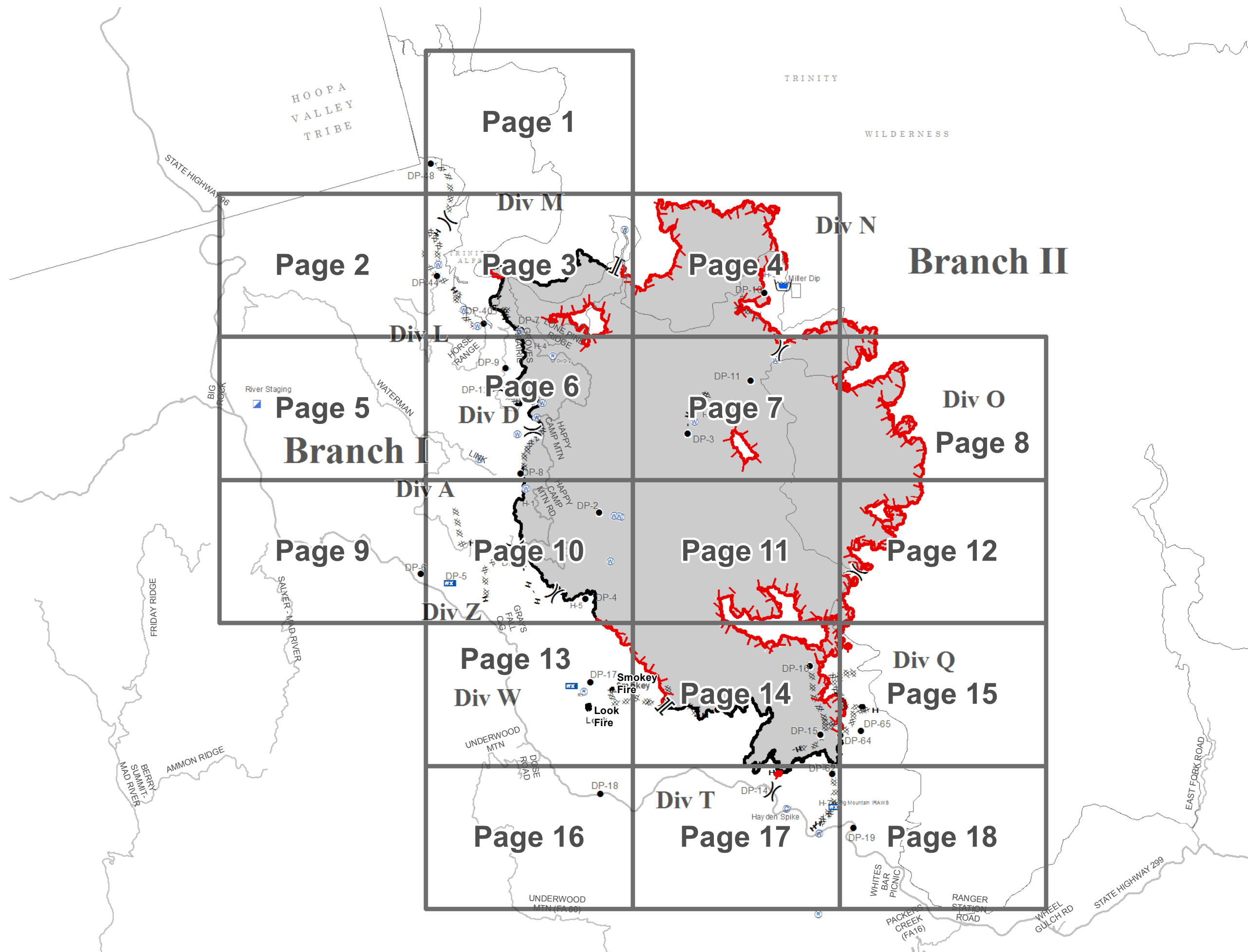
River Complex CA-SHF-002066

August 28, 2015



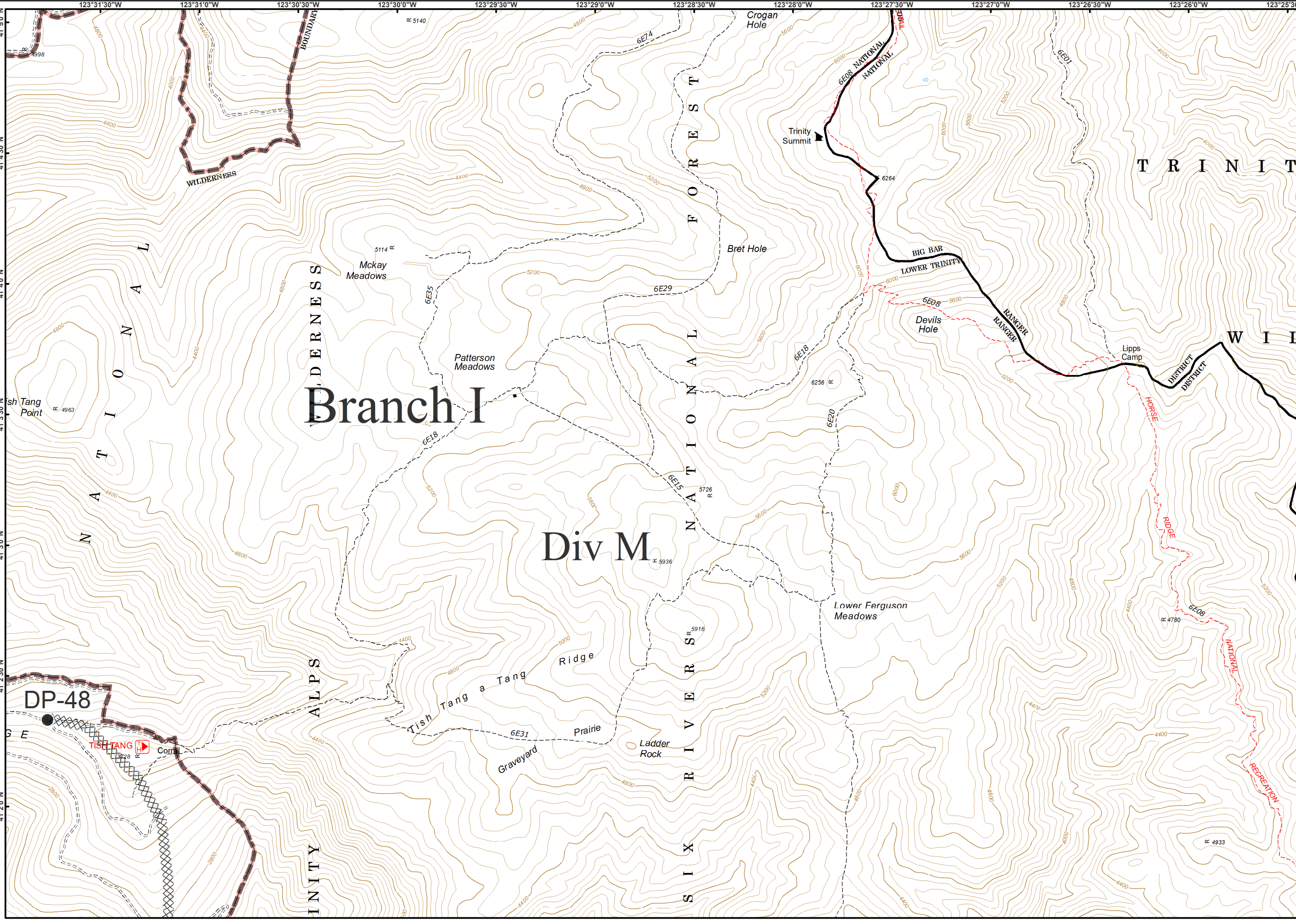
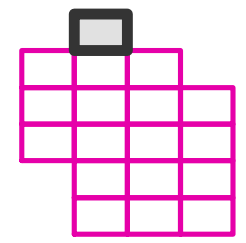
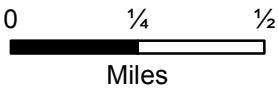
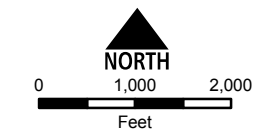
IAP Index

- Branch
- Division
- Retardant/Mud Pit
- Camp
- Drop Point
- Incident Command Post
- Mobile Weather Unit
- Repeater
- Water Source
- Uncontrolled Fire Edge
- Completed Dozer Line
- Completed Line
- Hand Line



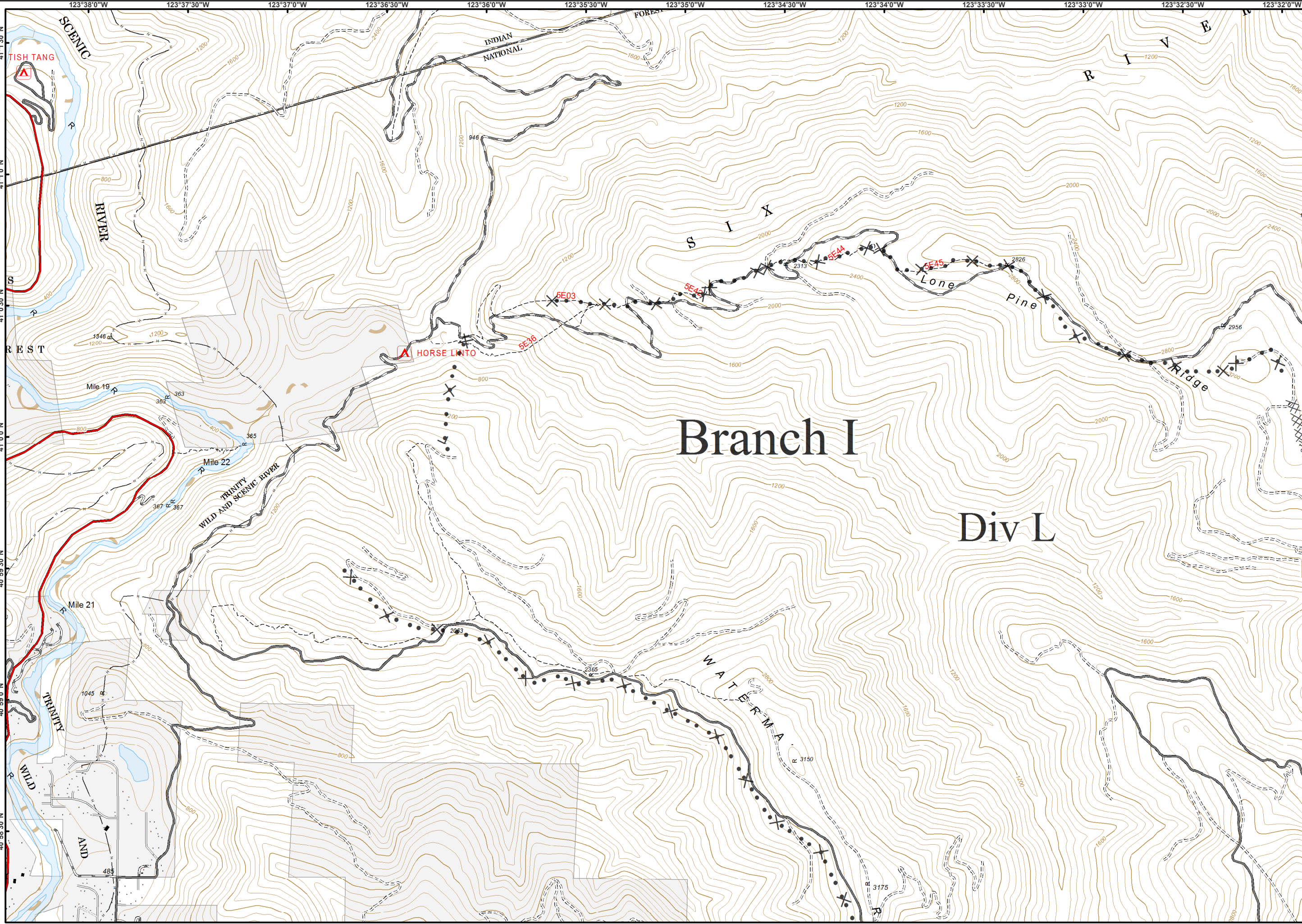
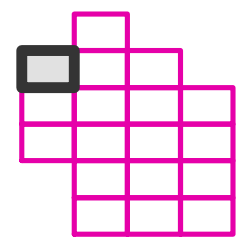
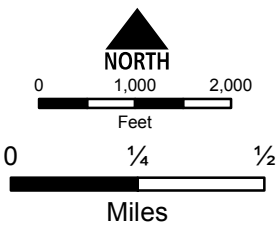


- Drop Point
- XXXX Completed Dozer Line
- W Wilderness



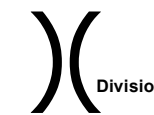


- XXXX Completed Dozer Line
- X • Proposed Dozer Line



Branch I

Div L



Division



Branch



Drop Point



Pump



Water Source



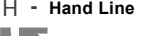
Uncontrolled Fire Edge



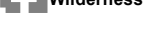
Completed Dozer Line



Completed Line



Hand Line

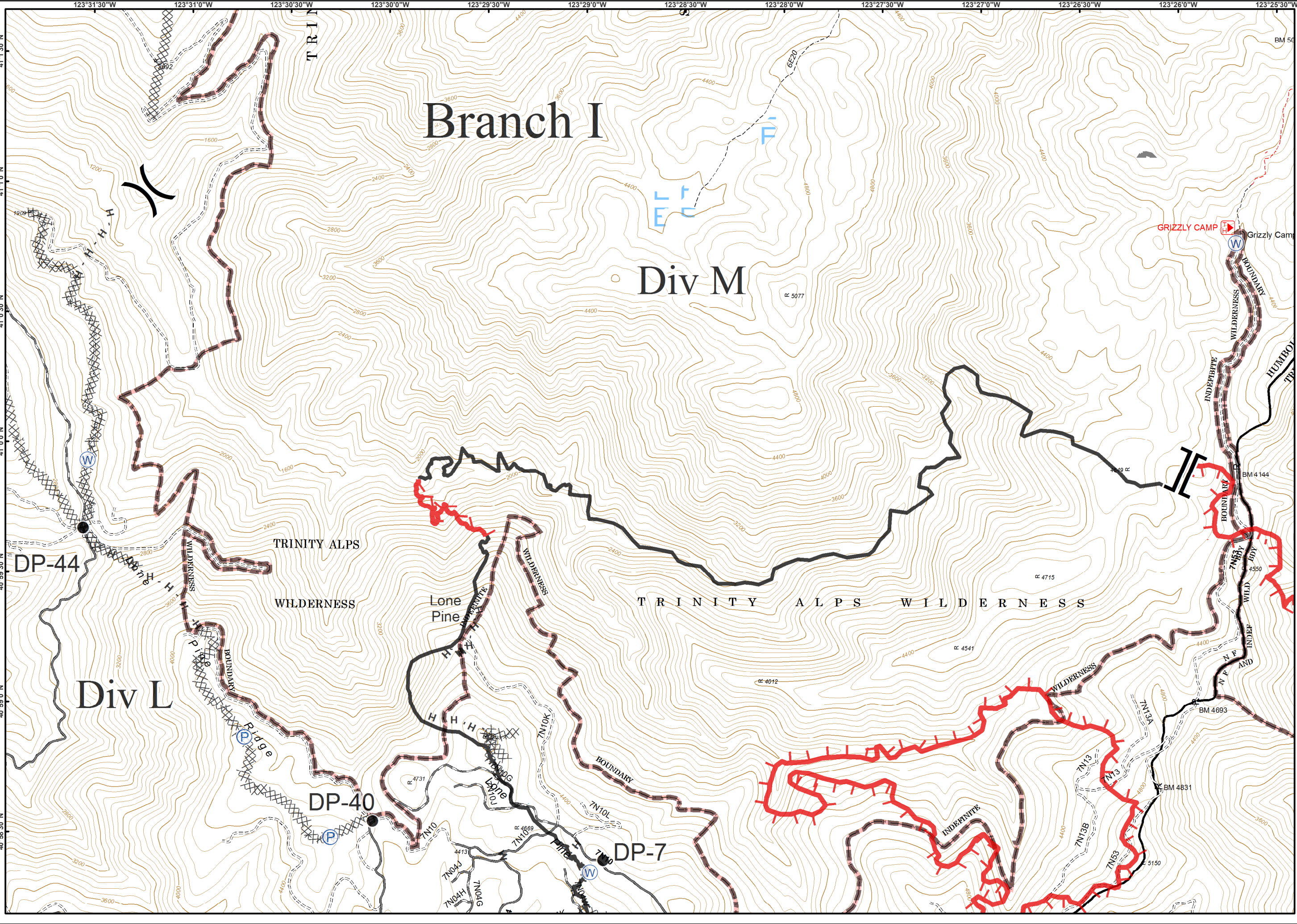
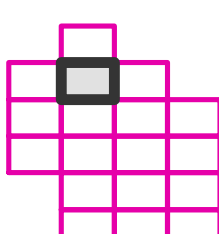


Wilderness



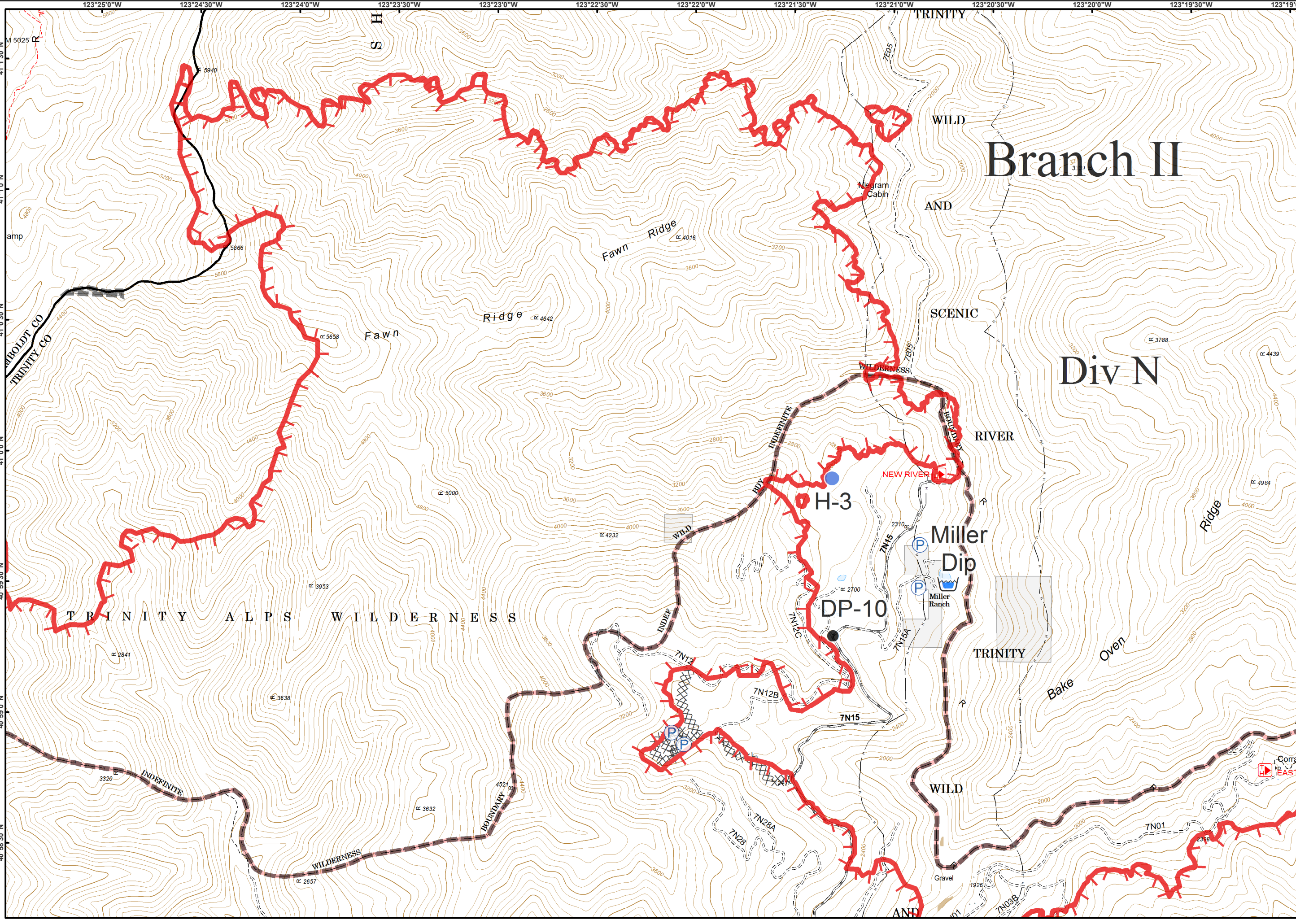
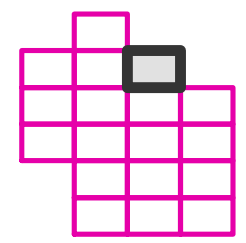
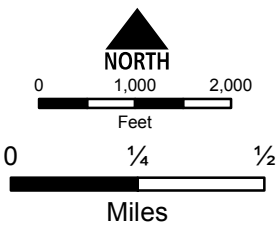
0 1,000 2,000
Feet

0 1/4 1/2
Miles



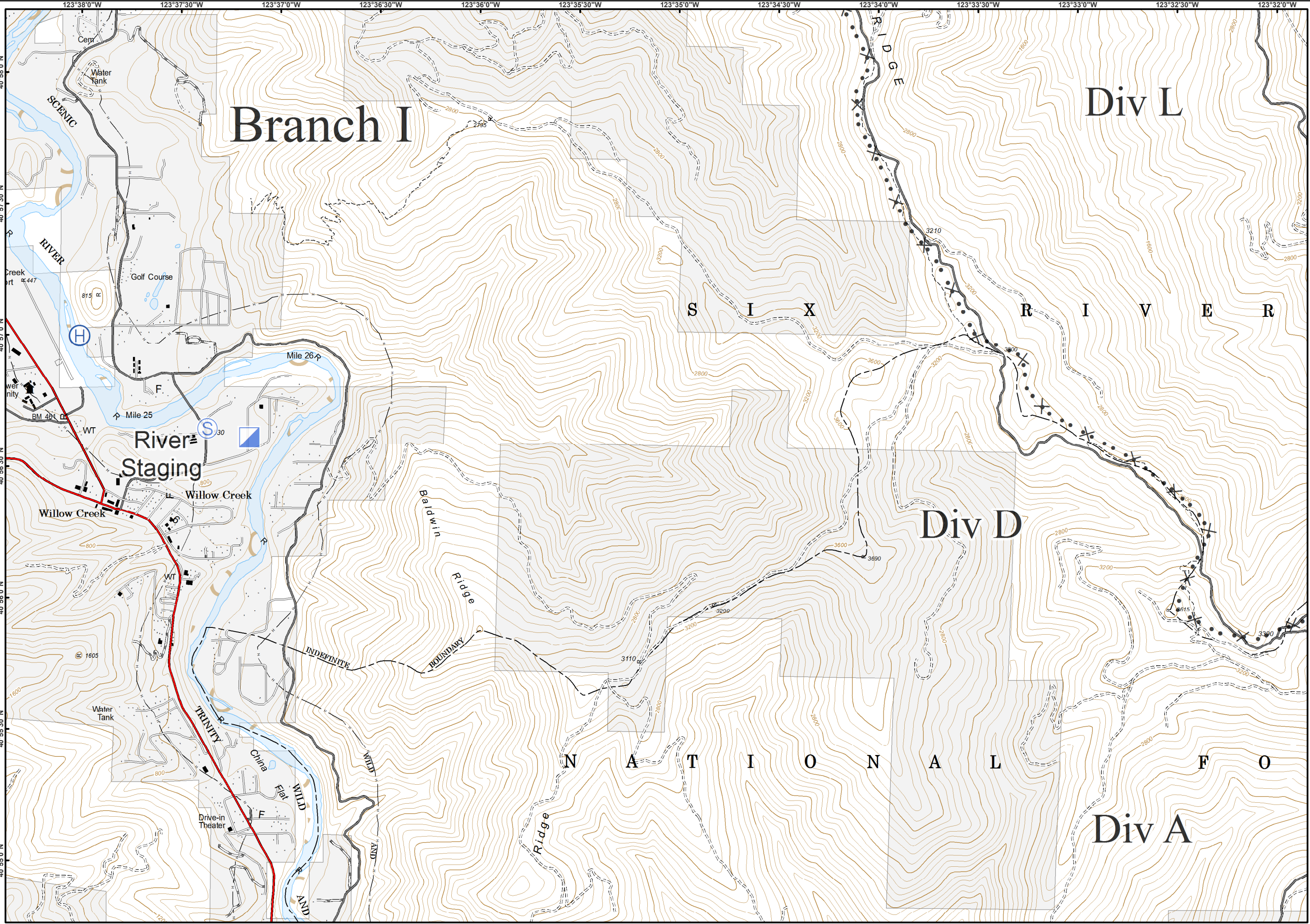
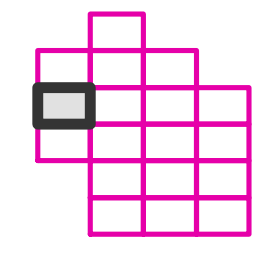
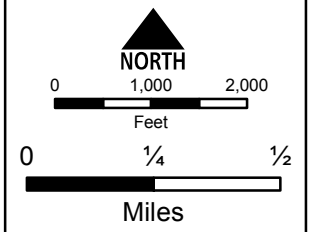


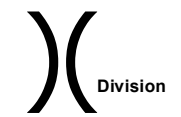
- Drop Point
- Helispot
- P Pump
- Retardant/Mud Pit
- Uncontrolled Fire Edge
- Completed Dozer Line
- Wilderness



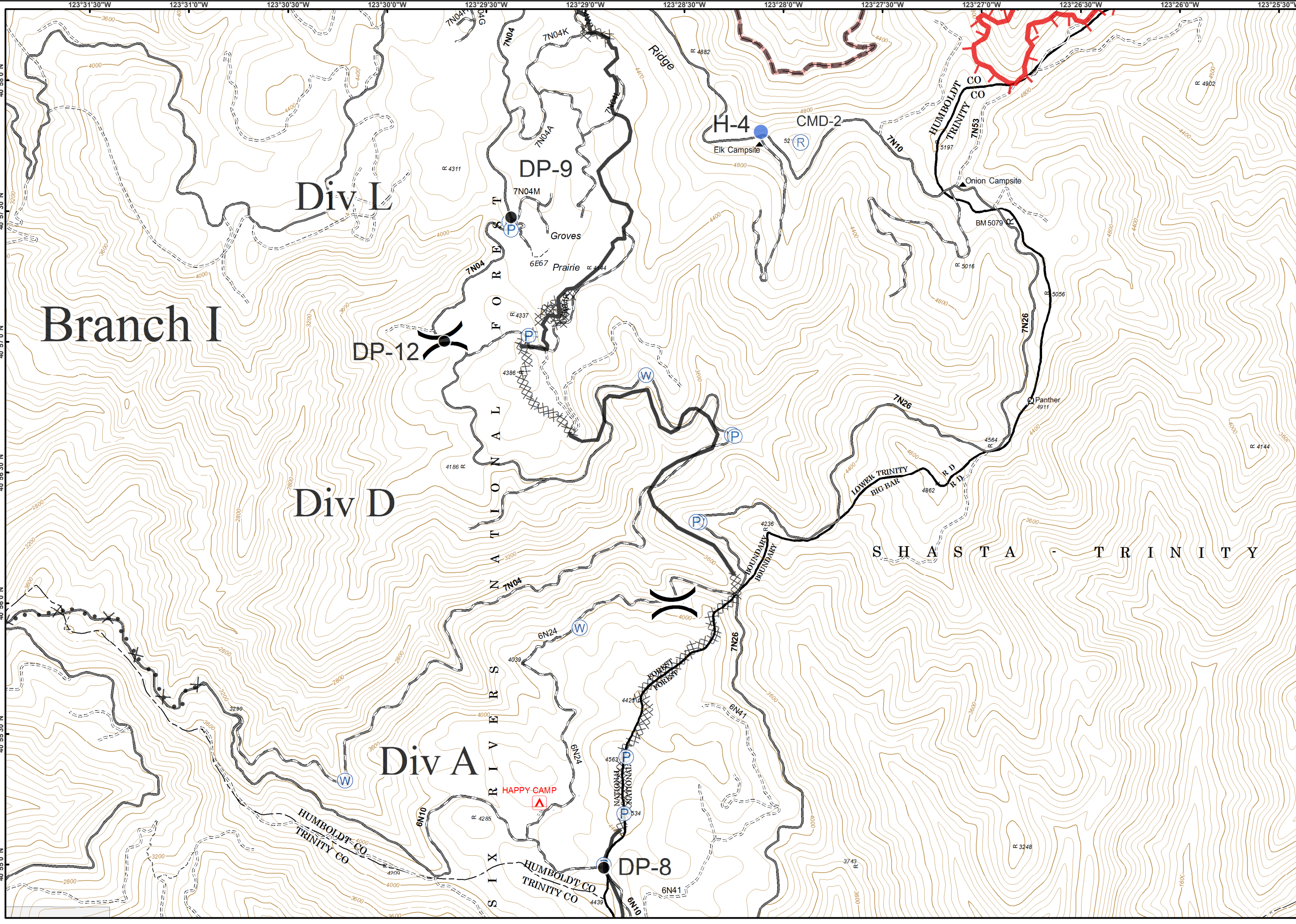
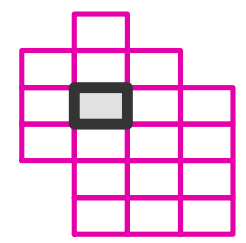
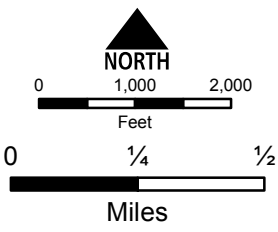


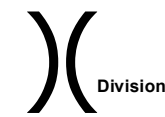
- Helibase
- Incident Command Post
- Staging Area
- Proposed Dozer Line



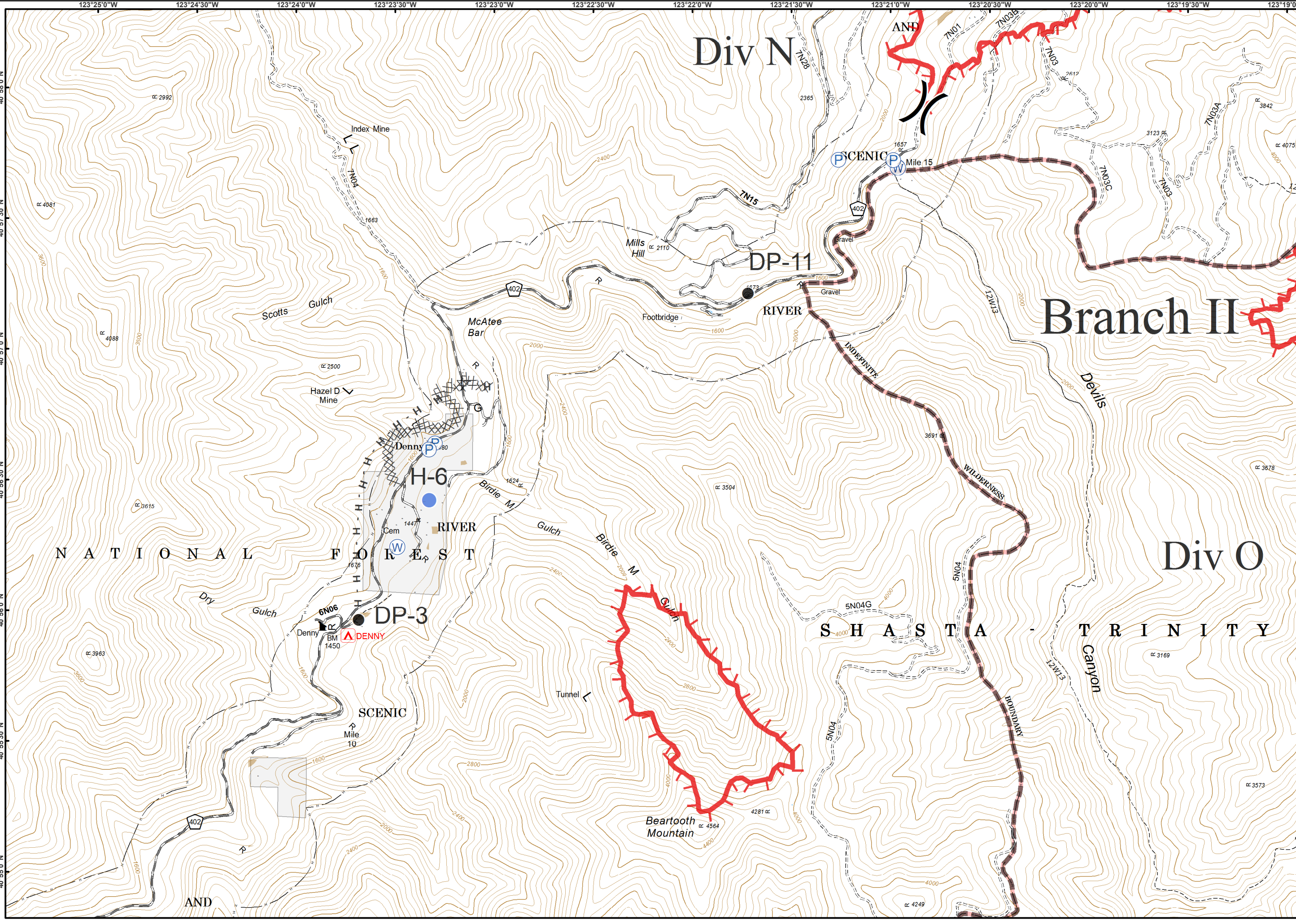
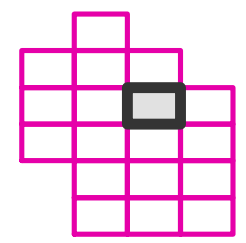
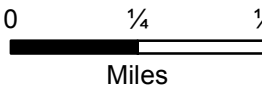
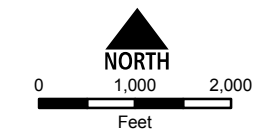


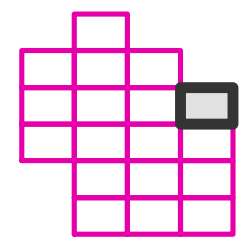
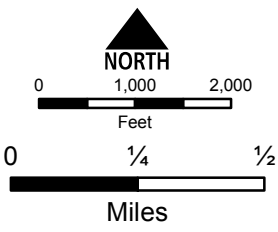
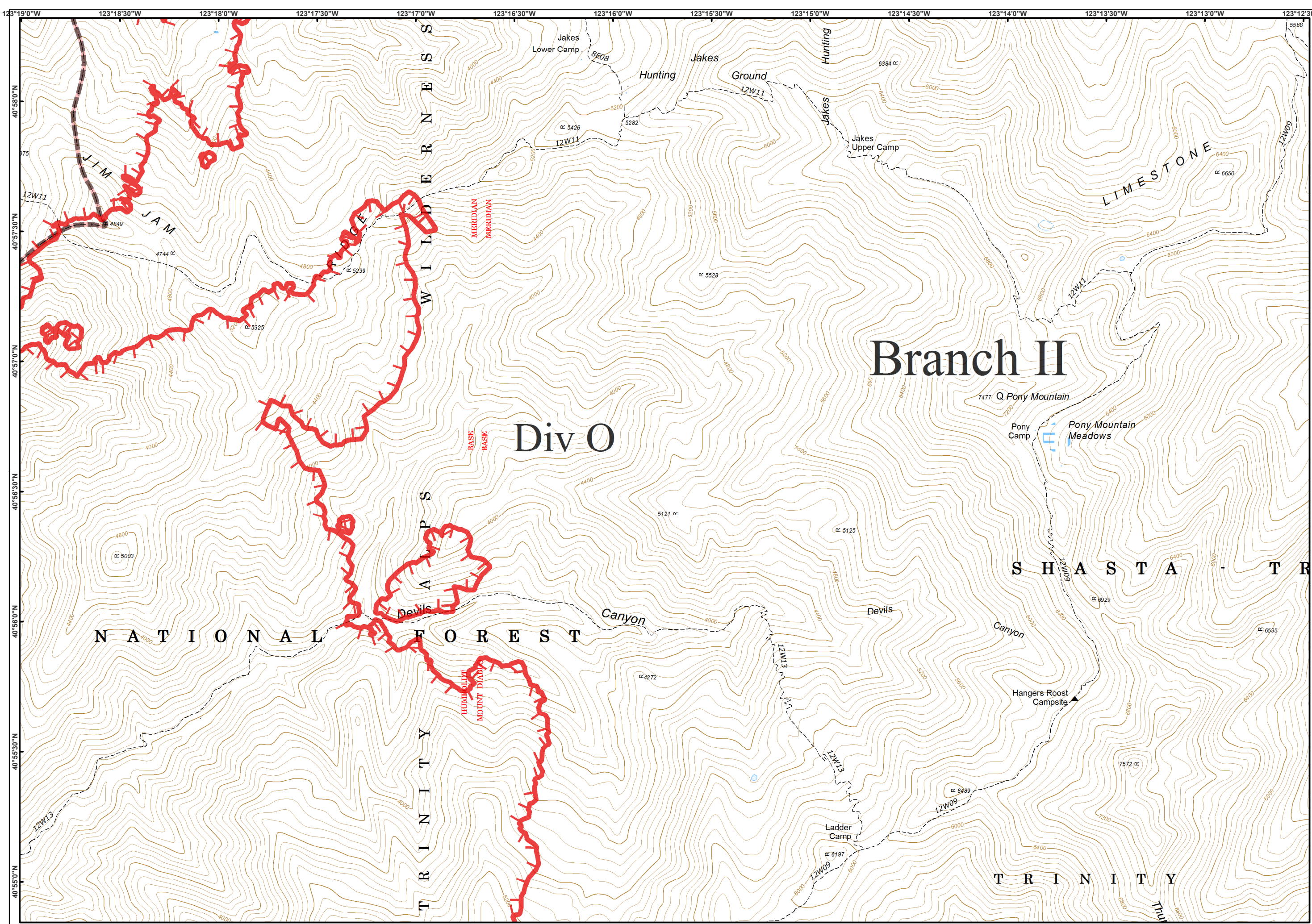
- Drop Point
- Helispot
- P Pump
- R Repeater
- W Water Source
- Uncontrolled Fire Edge
- Completed Dozer Line
- Completed Line
- H - Hand Line
- Proposed Dozer Line
- Wilderness





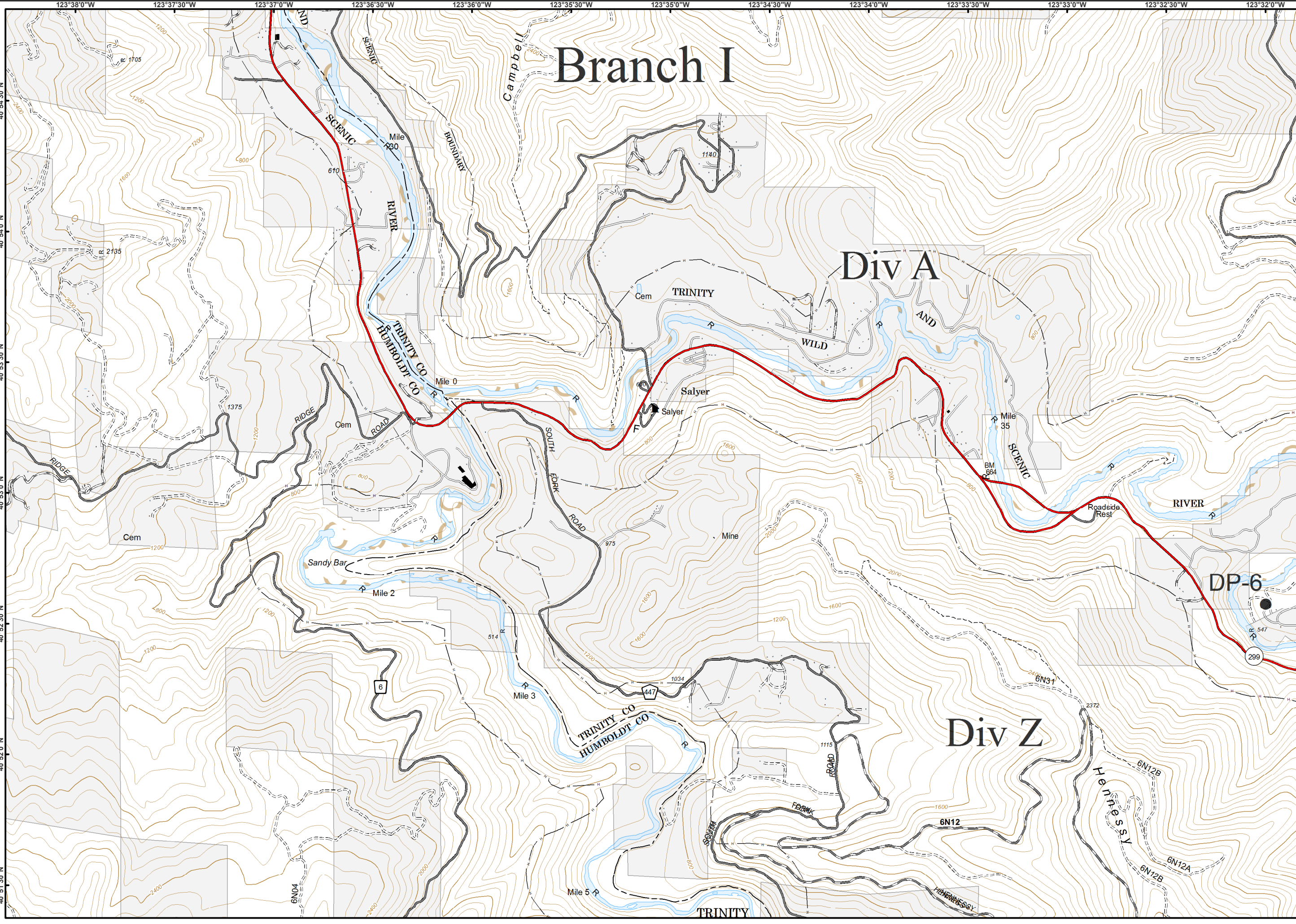
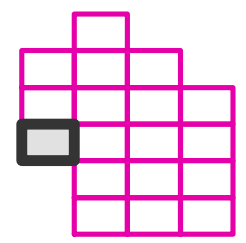
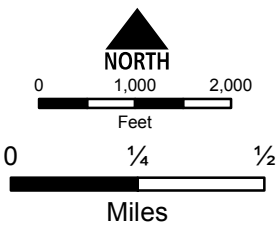
- Drop Point
- Helispot
- P Pump
- W Water Source
- Uncontrolled Fire Edge
- Completed Dozer Line
- H - Hand Line
- Wilderness

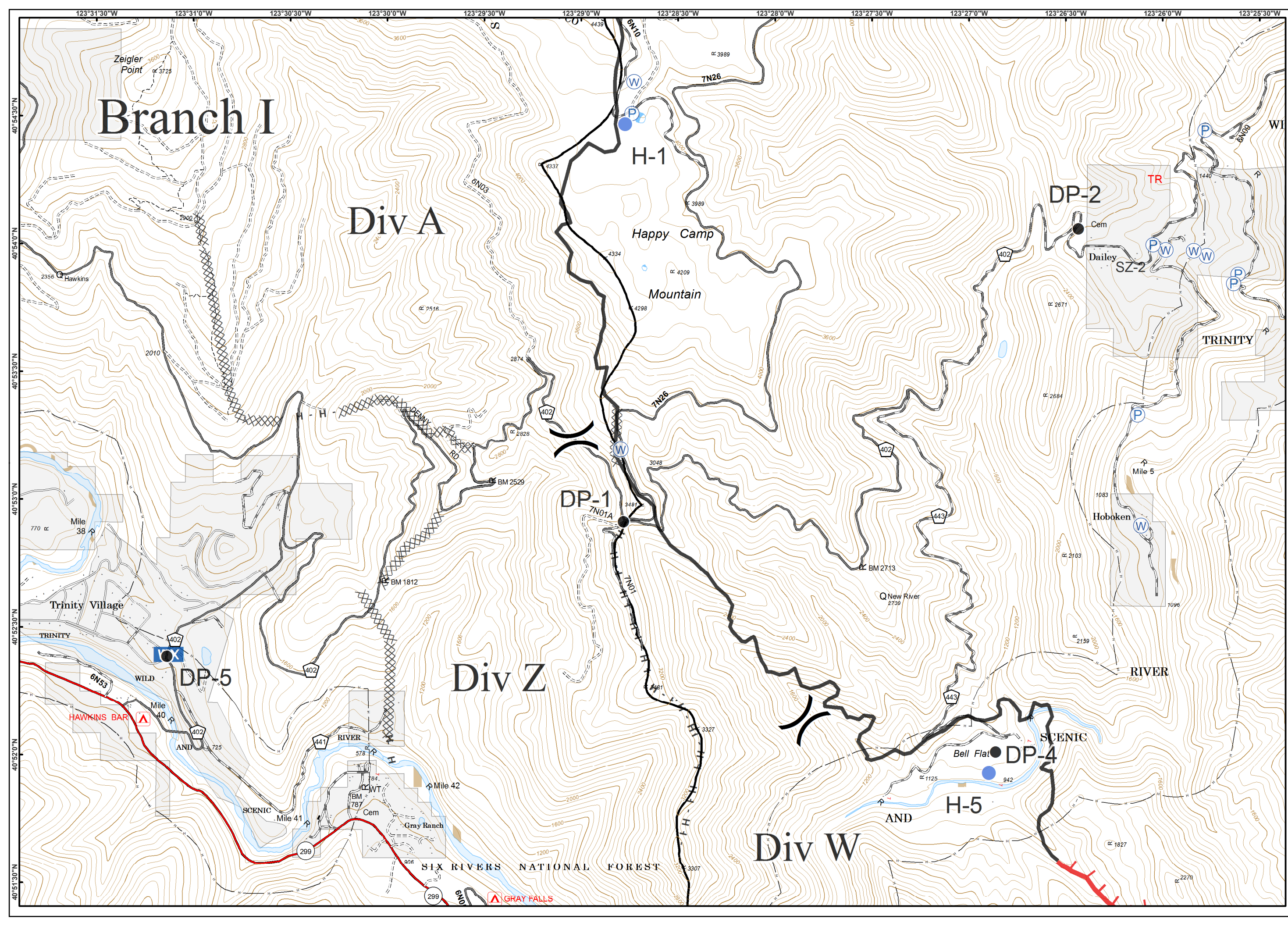
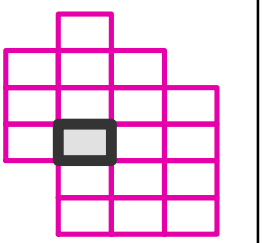
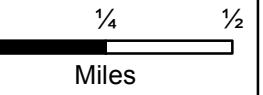
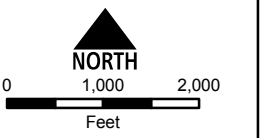
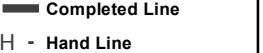
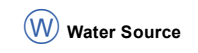
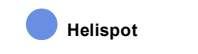
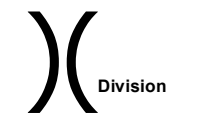






● Drop Point





Branch I

Div A

Div Z

Div W

H-1

DP-1

DP-2

DP-5

DP-4

Happy Camp

Mountain

Dailey

Trinity Village

Hoboken

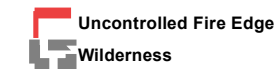
Bell Flat

SCENIC

SCENIC

SIX RIVERS NATIONAL FOREST

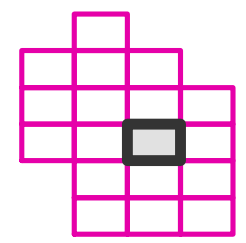
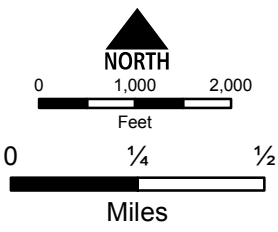
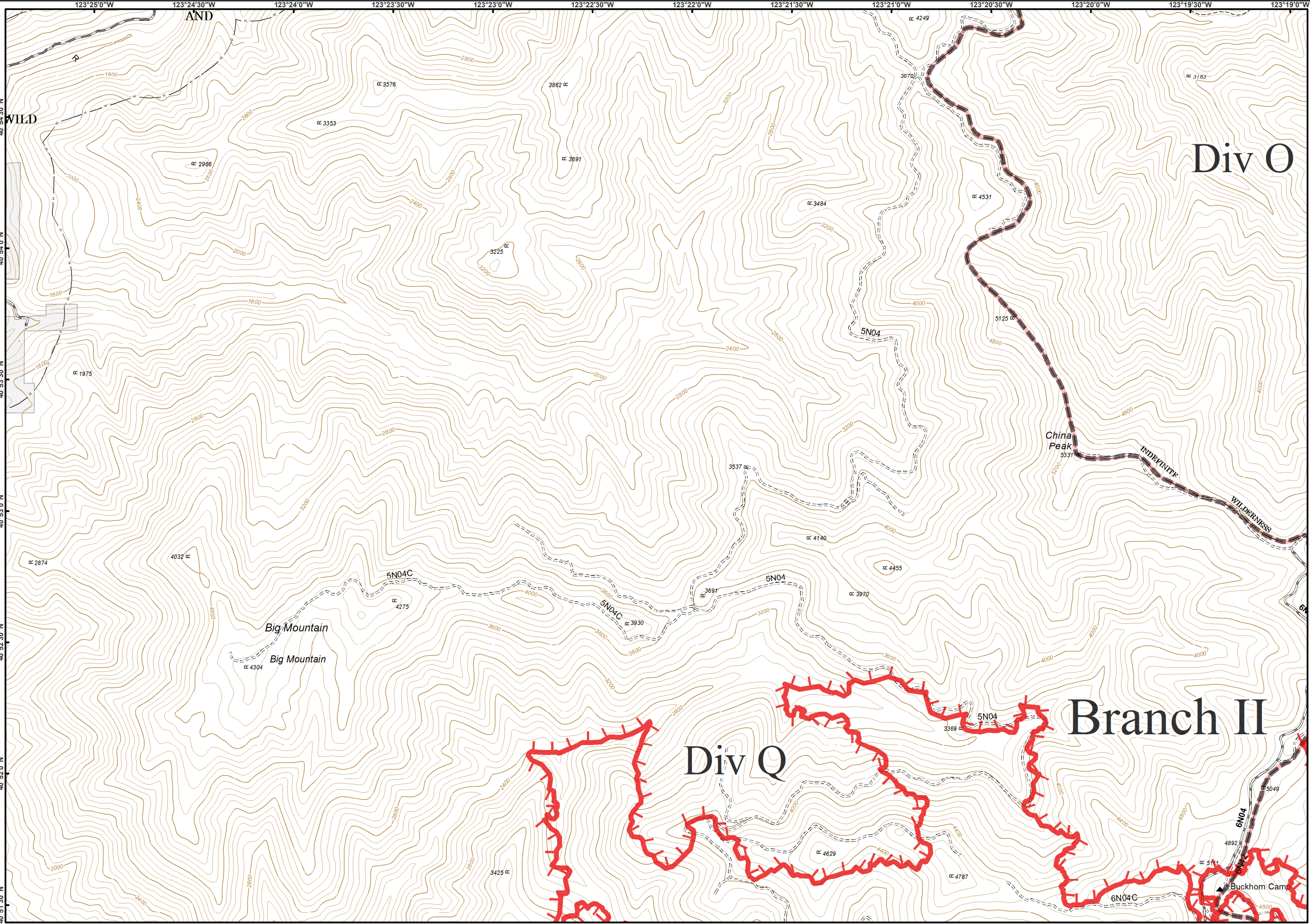
GRAY FALLS

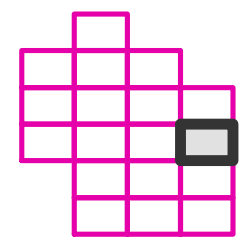
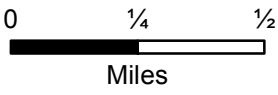
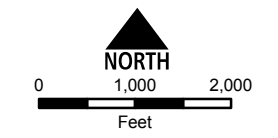
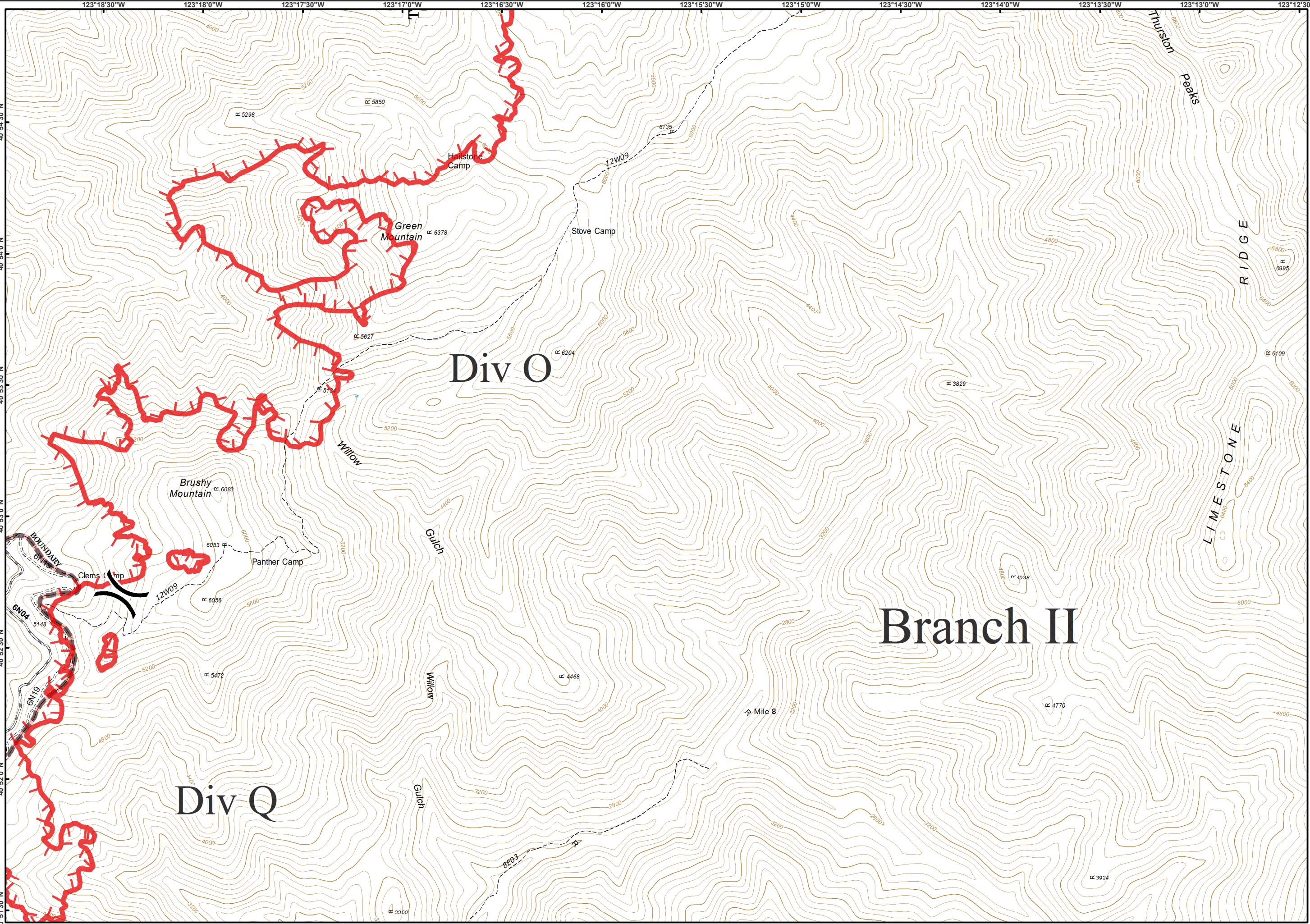
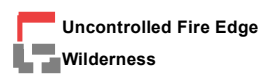
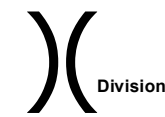


Div O

Branch II

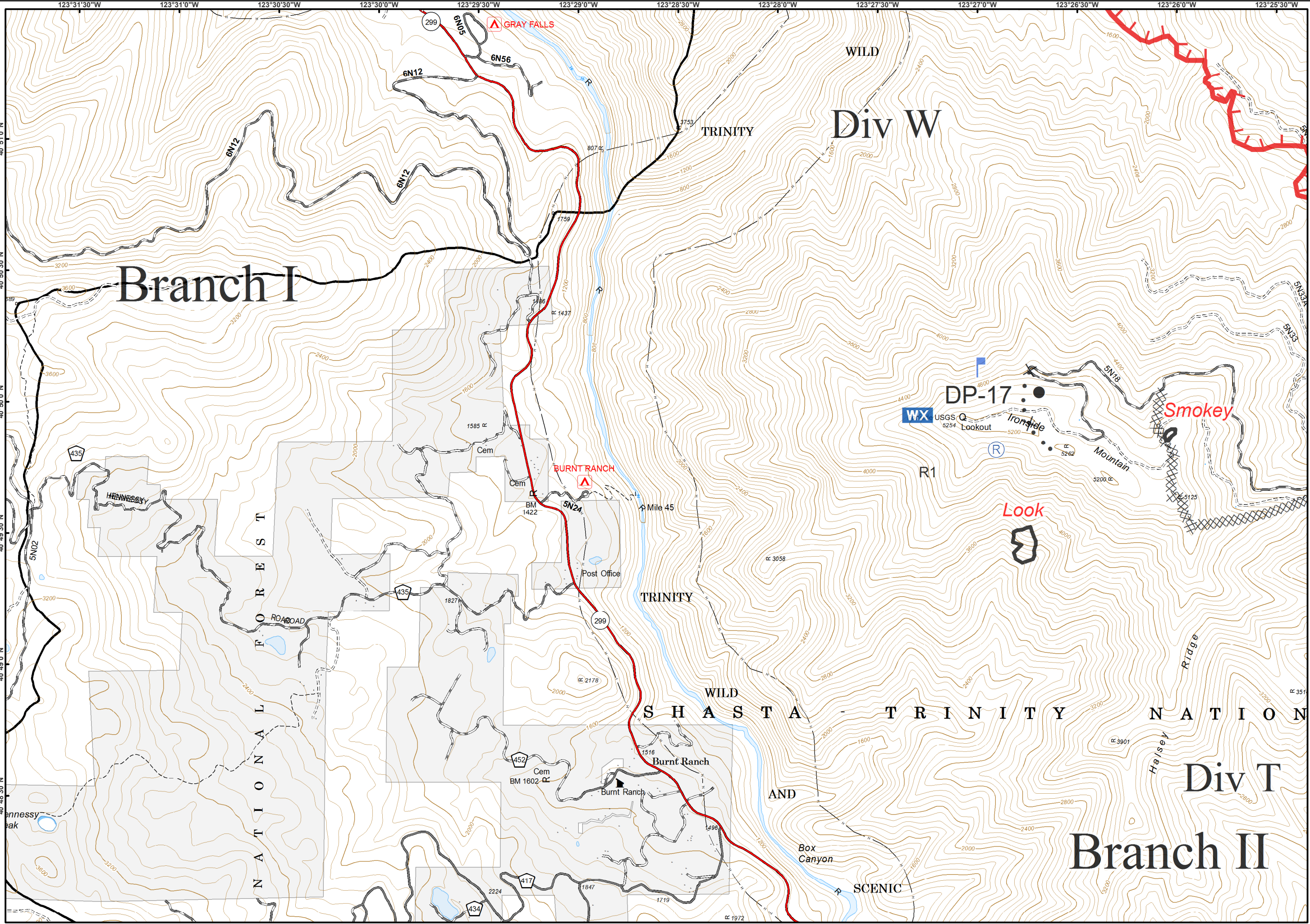
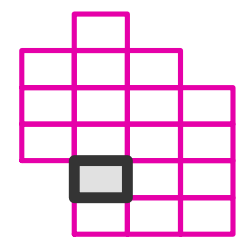
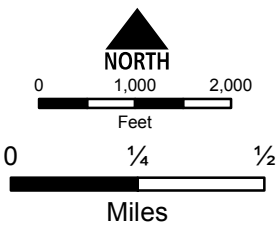
Div Q

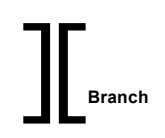




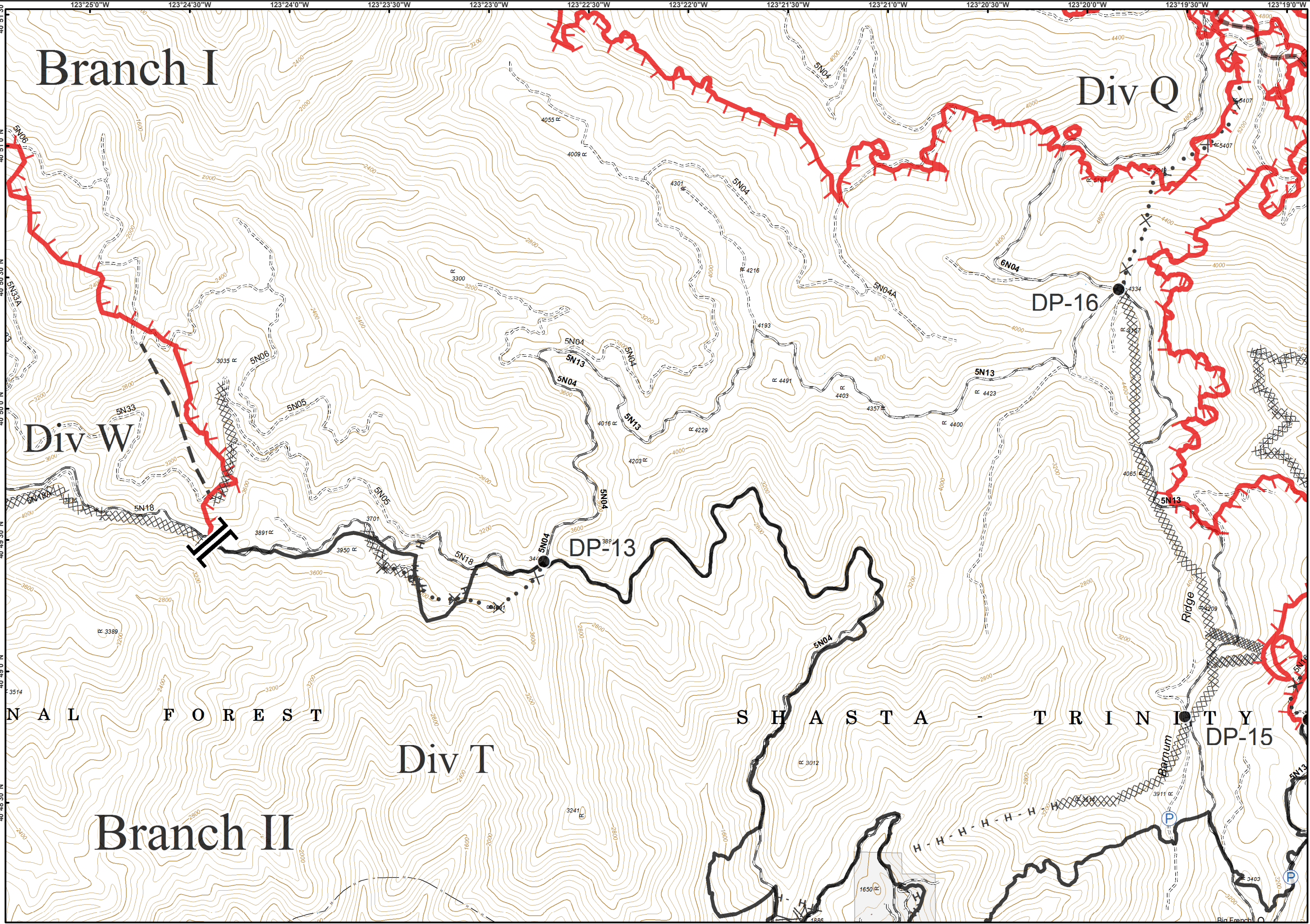
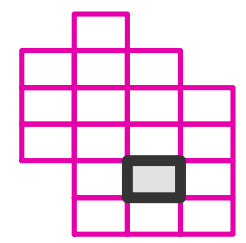
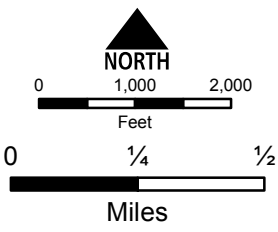


- Drop Point
- └ Lookout
- WX Mobile Weather Unit
- Ⓡ Repeater
- ▬ Uncontrolled Fire Edge
- ▨ Completed Dozer Line
- ▬ Completed Line
- ✕ Proposed Dozer Line





- Drop Point
- P Pump
- Uncontrolled Fire Edge
- Completed Dozer Line
- Completed Line
- H - Hand Line
- Line Break Completed
- Planned Fire Line
- Proposed Dozer Line
- Wilderness





- Drop Point
- Ⓟ Pump
- ▬ Uncontrolled Fire Edge
- XXXX Completed Dozer Line
- ▬ Completed Line
- H - Hand Line
- ✂ • Proposed Dozer Line
- ▭ Wilderness

