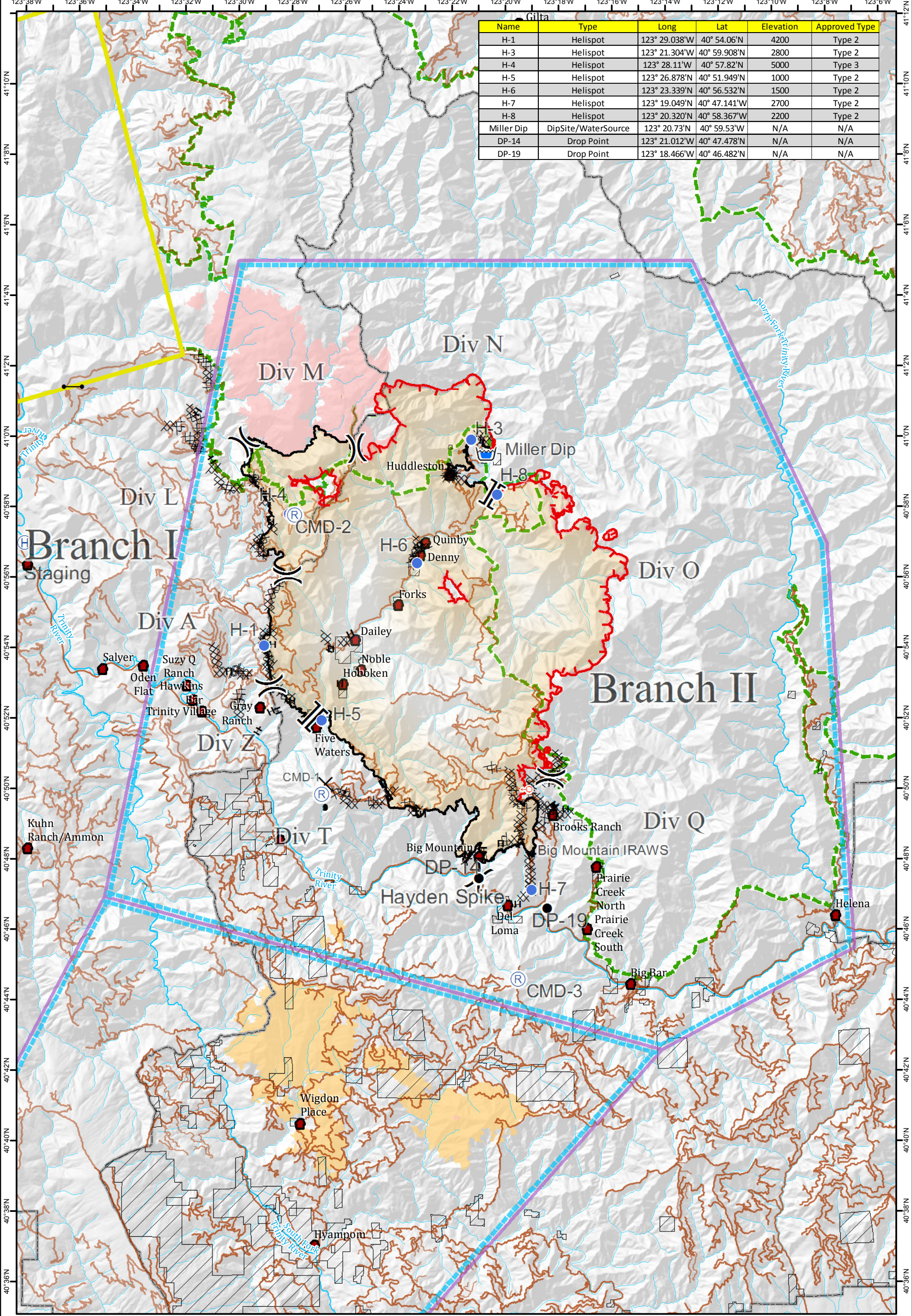


| Name | Type | Long | Lat | Elevation | Approved Type |
|------------|---------------------|---------------|--------------|-----------|---------------|
| H-1 | Helispot | 123° 29.038'W | 40° 54.06'N | 4200 | Type 2 |
| H-3 | Helispot | 123° 21.304'W | 40° 59.908'N | 2800 | Type 2 |
| H-4 | Helispot | 123° 28.11'W | 40° 57.82'N | 5000 | Type 3 |
| H-5 | Helispot | 123° 26.878'W | 40° 51.949'N | 1000 | Type 2 |
| H-6 | Helispot | 123° 23.339'W | 40° 56.532'N | 1500 | Type 2 |
| H-7 | Helispot | 123° 19.049'W | 40° 47.141'W | 2700 | Type 2 |
| H-8 | Helispot | 123° 20.320'W | 40° 58.367'W | 2200 | Type 2 |
| Miller Dip | DipSite/WaterSource | 123° 20.73'W | 40° 59.53'W | N/A | N/A |
| DP-14 | Drop Point | 123° 21.012'W | 40° 47.478'N | N/A | N/A |
| DP-19 | Drop Point | 123° 18.466'W | 40° 46.482'N | N/A | N/A |



Air Operations
 River Complex
 CA-SHF-002066
 09/05/2015

| | | | | |
|--------------|---------------------|--------------------------|------------------------|---------------------------|
| ● Drop Point | ● Helispot | — Uncontrolled Fire Edge | — Line Break Completed | — K Rail |
| ○ Spot Fire | — Retardant/Mud Pit | — Completed Dozer Line | — Planned Fire Line | — Roads |
| ⊕ Helibase | Ⓡ Repeater | — Completed Line | — Proposed Dozer Line | — Hoopa |
| | | H - Hand Line | ● Towns | — NON-FS |
| | | | | — National Forest Boundry |

TFRs
 Wilderness
 South Complex
 2013 Corral Fire