

Legend

- ⊙ Camp
- Drop Point
- ⊕ Helibase
- Helispot
- ▣ Incident Command Post
- ▤ Lookout
- ☒ Mobile Weather Unit
- Ⓟ Pump
- Ⓡ Repeater
- 🔥 Retardant/Mud Pit
- Ⓢ Staging Area
- Ⓜ Water Source
- Uncontrolled Fire Edge
- XXXXX Completed Dozer Line
- Completed Line
- H - H - Hand Line
- 〰 Line Break Completed
- - - Planned Fire Line
- ⊗ • Proposed Dozer Line

- Hot Spot - Significant Priority (Considerable Threat to Fireline)
- Hot Spot - Moderate Priority (Possible Threat to Fireline)
- 🔥 Live Fire - Uncontained Spot Fire or Fire Front

River Complex

CA-SHF-002066

DATUM WGS 84

Infrared Survey - Index Map
 Infrared Data Captured on 20150908 @ 1615

0 0.5 1 2 3 4 5 Miles

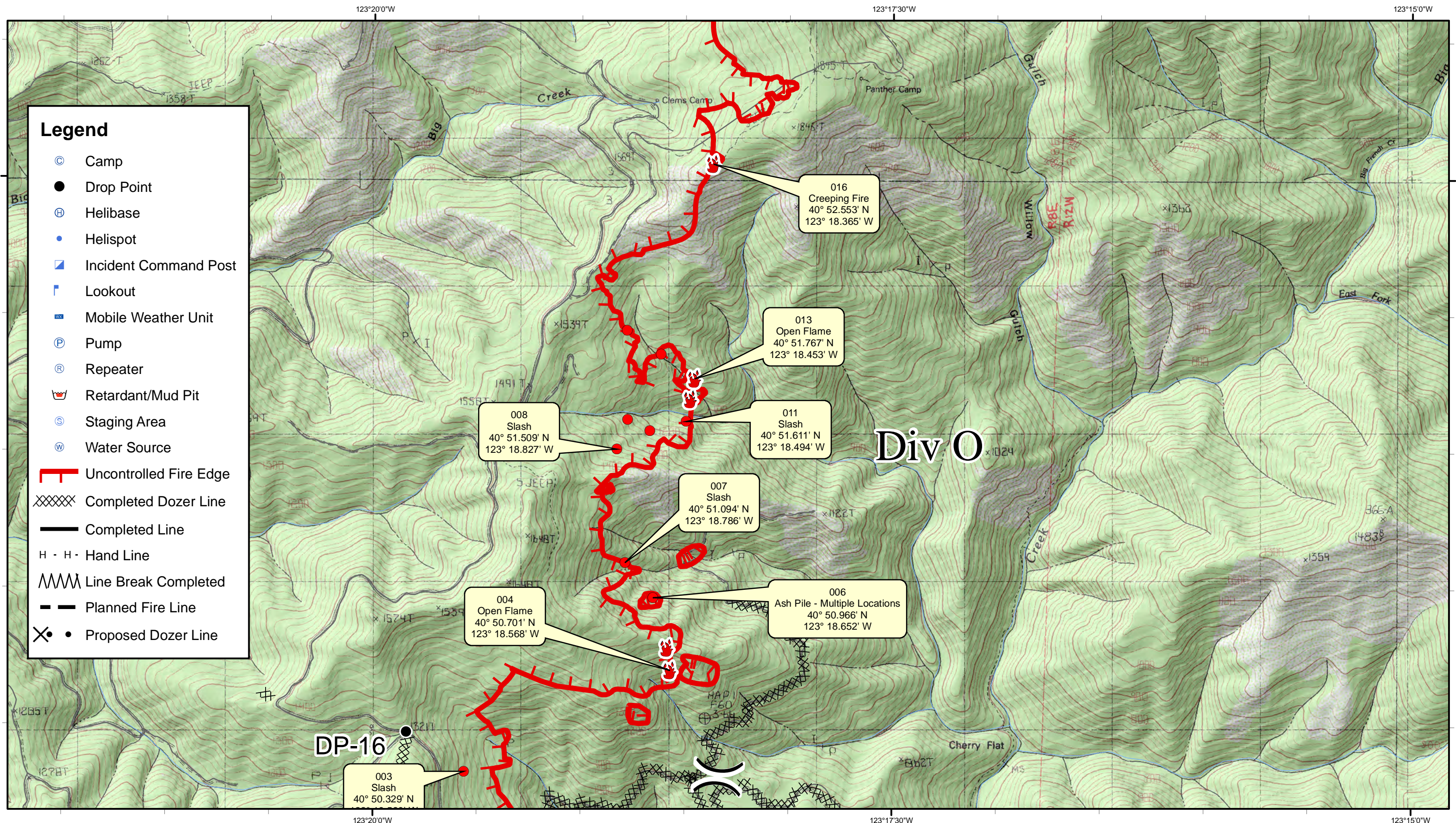
September 8, 2015

AVIATION'S EMERGENCY LOGICAL SERVICES
 www.VETSresponse.com
 805.218.9646

VETS

Cost Effective Infrared

Aspen Helicopters
 www.aspenhelo.com
 805.985.5416



- Legend**
- ⊙ Camp
 - Drop Point
 - ⊕ Helibase
 - Helispot
 - ▣ Incident Command Post
 - ⌚ Lookout
 - ☒ Mobile Weather Unit
 - Ⓟ Pump
 - Ⓡ Repeater
 - 🛒 Retardant/Mud Pit
 - Ⓢ Staging Area
 - Ⓜ Water Source
 - ┃ Uncontrolled Fire Edge
 - XXXXX Completed Dozer Line
 - Completed Line
 - H · H · Hand Line
 - 〰 Line Break Completed
 - - - Planned Fire Line
 - ⊗ Proposed Dozer Line

008
Slash
40° 51.509' N
123° 18.827' W

007
Slash
40° 51.094' N
123° 18.786' W

011
Slash
40° 51.611' N
123° 18.494' W

016
Creeping Fire
40° 52.553' N
123° 18.365' W

013
Open Flame
40° 51.767' N
123° 18.453' W

004
Open Flame
40° 50.701' N
123° 18.568' W

006
Ash Pile - Multiple Locations
40° 50.966' N
123° 18.652' W

003
Slash
40° 50.329' N

Div O

DP-16



- Hot Spot - Significant Priority (Considerable Threat to Fireline)
- Hot Spot - Moderate Priority (Possible Threat to Fireline)
- 🔥 Live Fire - Uncontained Spot Fire or Fire Front

River Complex

CA-SHF-002066

DATUM WGS 84

Infrared Survey - Div O (Page 1)
 Infrared Data Captured on 20150908 @ 1615

0 0.5 1 Miles



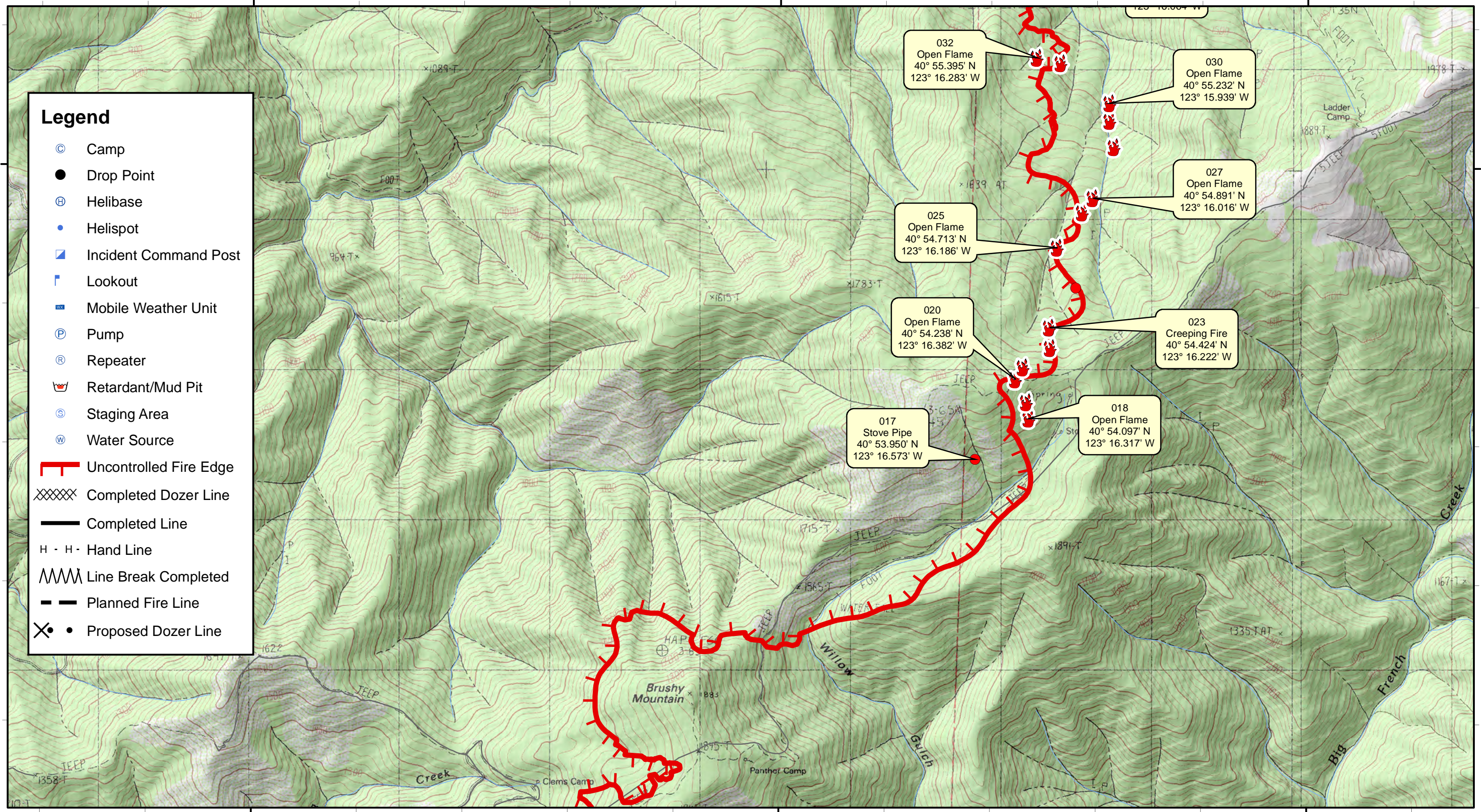
123°20'0"W 123°17'30"W 123°15'0"W

40°55'0"N

40°55'0"N

Legend

- ⊙ Camp
- Drop Point
- ⊕ Helibase
- Helispot
- ▣ Incident Command Post
- ▤ Lookout
- ▣ Mobile Weather Unit
- Ⓟ Pump
- Ⓡ Repeater
- 🔥 Retardant/Mud Pit
- Ⓢ Staging Area
- Ⓜ Water Source
- ┃ Uncontrolled Fire Edge
- XXXXX Completed Dozer Line
- Completed Line
- H · H · Hand Line
- 〰 Line Break Completed
- - - Planned Fire Line
- ⊗ • Proposed Dozer Line



123°20'0"W 123°17'30"W 123°15'0"W



- Hot Spot - Significant Priority (Considerable Threat to Fireline)
- Hot Spot - Moderate Priority (Possible Threat to Fireline)
- 🔥 Live Fire - Uncontained Spot Fire or Fire Front

River Complex

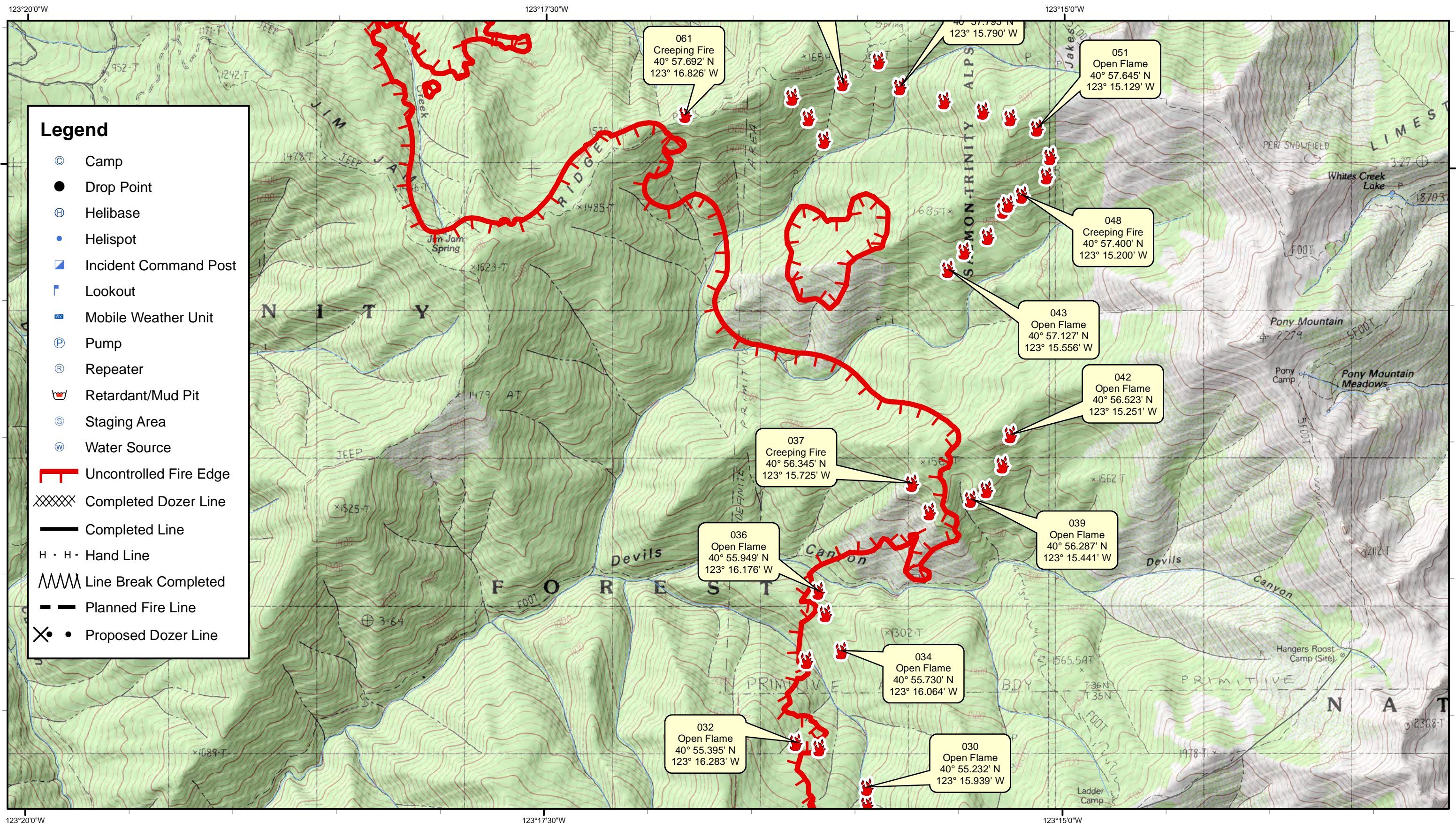
CA-SHF-002066

DATUM WGS 84

Infrared Survey - Div O (Page 2)
Infrared Data Captured on 20150908 @ 1615

0 0.5 1 Miles





- Hot Spot - Significant Priority (Considerable Threat to Fireline)
- Hot Spot - Moderate Priority (Possible Threat to Fireline)
- 🔥 Live Fire - Uncontained Spot Fire or Fire Front

River Complex

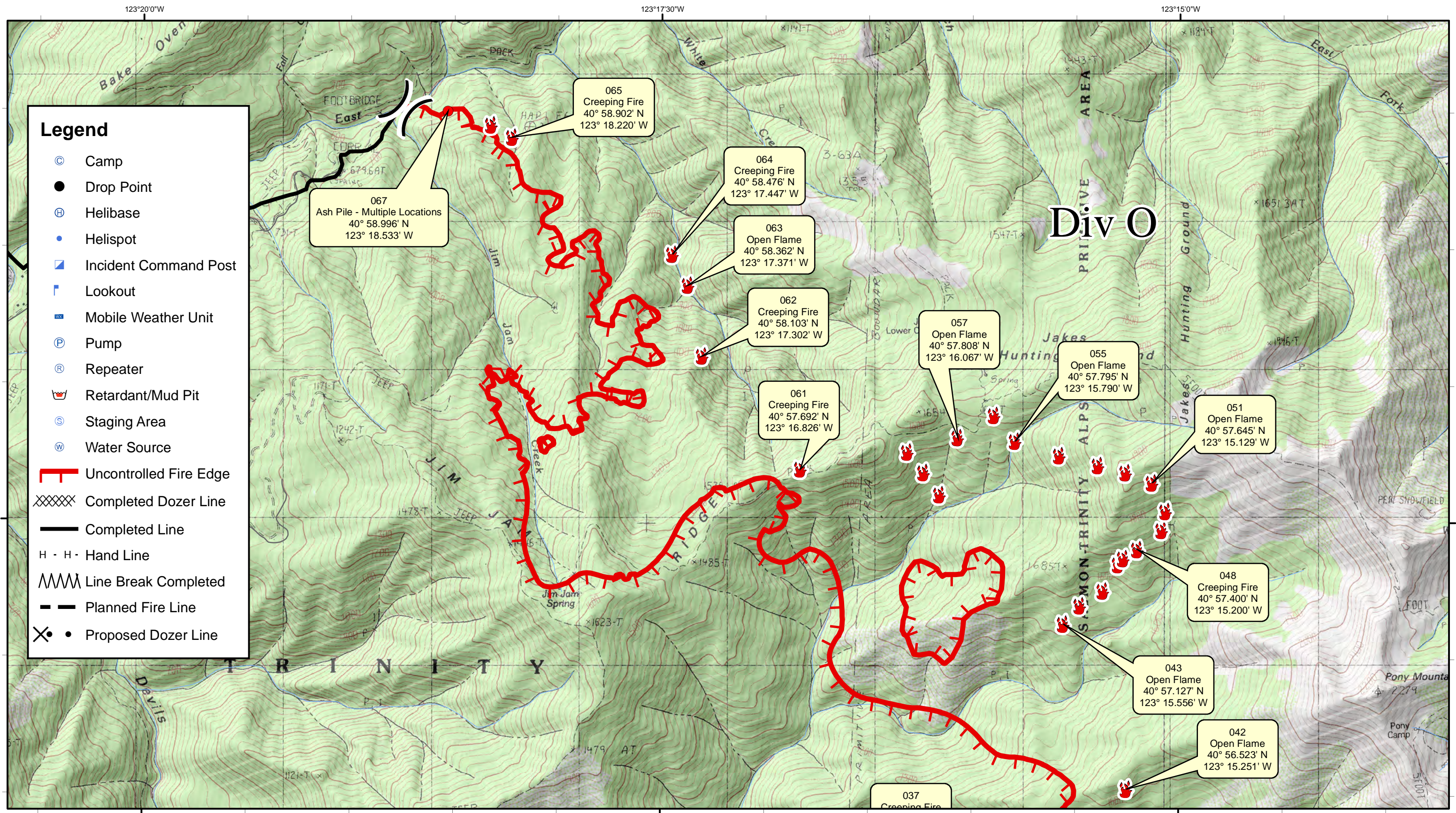
CA-SHF-002066

DATUM WGS 84

Infrared Survey - Div O (Page 3)
 Infrared Data Captured on 20150908 @ 1615

0 0.5 1 Miles



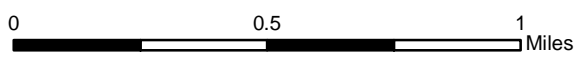


River Complex

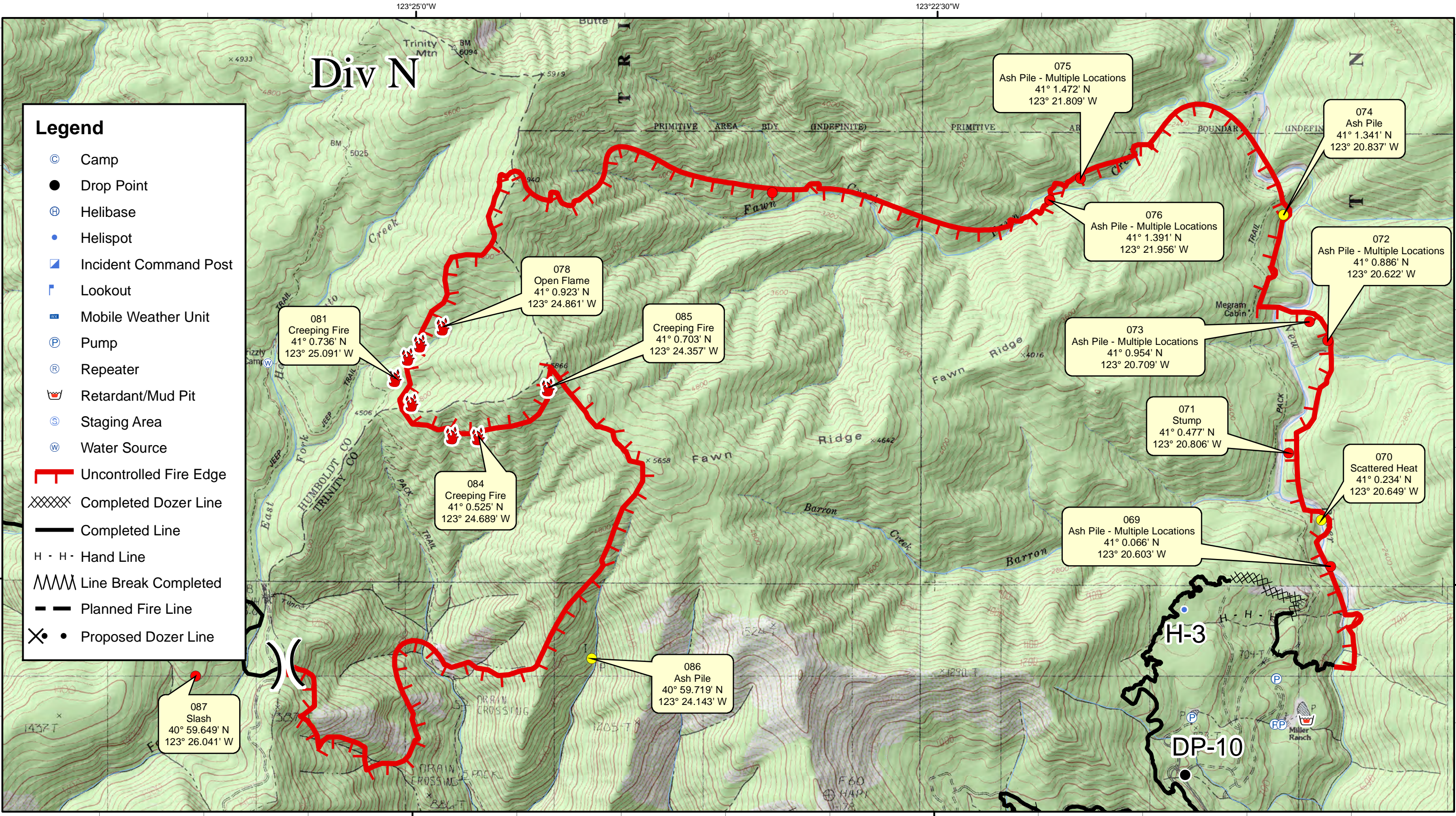
CA-SHF-002066

DATUM WGS 84

Infrared Survey - Div O (Page 4)
 Infrared Data Captured on 20150908 @ 1615



- Hot Spot - Significant Priority (Considerable Threat to Fireline)
- Hot Spot - Moderate Priority (Possible Threat to Fireline)
- 🔥 Live Fire - Uncontained Spot Fire or Fire Front



Legend

- ⊙ Camp
- Drop Point
- ⊕ Helibase
- Helispot
- ▣ Incident Command Post
- ▤ Lookout
- ☒ Mobile Weather Unit
- Ⓟ Pump
- Ⓡ Repeater
- 🔥 Retardant/Mud Pit
- Ⓢ Staging Area
- Ⓜ Water Source
- Uncontrolled Fire Edge
- XXXXX Completed Dozer Line
- Completed Line
- H · H · Hand Line
- 〰 Line Break Completed
- - - Planned Fire Line
- ⊗ Proposed Dozer Line

087
Slash
40° 59.649' N
123° 26.041' W

081
Creeping Fire
41° 0.736' N
123° 25.091' W

078
Open Flame
41° 0.923' N
123° 24.861' W

085
Creeping Fire
41° 0.703' N
123° 24.357' W

084
Creeping Fire
41° 0.525' N
123° 24.689' W

086
Ash Pile
40° 59.719' N
123° 24.143' W

075
Ash Pile - Multiple Locations
41° 1.472' N
123° 21.809' W

076
Ash Pile - Multiple Locations
41° 1.391' N
123° 21.956' W

072
Ash Pile - Multiple Locations
41° 0.886' N
123° 20.622' W

073
Ash Pile - Multiple Locations
41° 0.954' N
123° 20.709' W

071
Stump
41° 0.477' N
123° 20.806' W

070
Scattered Heat
41° 0.234' N
123° 20.649' W

069
Ash Pile - Multiple Locations
41° 0.066' N
123° 20.603' W

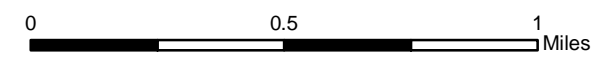
River Complex

CA-SHF-002066

DATUM WGS 84

Infrared Survey - Div N

Infrared Data Captured on 20150908 @ 1615



ASTOR'S EMERGENCY TECHNICAL SERVICES
www.ETSresponse.com
805.218.9646

VETS
Cost Effective Infrared

Aspen Helicopters
www.aspenhelo.com
805.985.5416

- Hot Spot - Significant Priority (Considerable Threat to Fireline)
- Hot Spot - Moderate Priority (Possible Threat to Fireline)
- 🔥 Live Fire - Uncontained Spot Fire or Fire Front

123°22'30"W

123°20'0"W

123°17'30"W

40°50'0"N

40°50'0"N

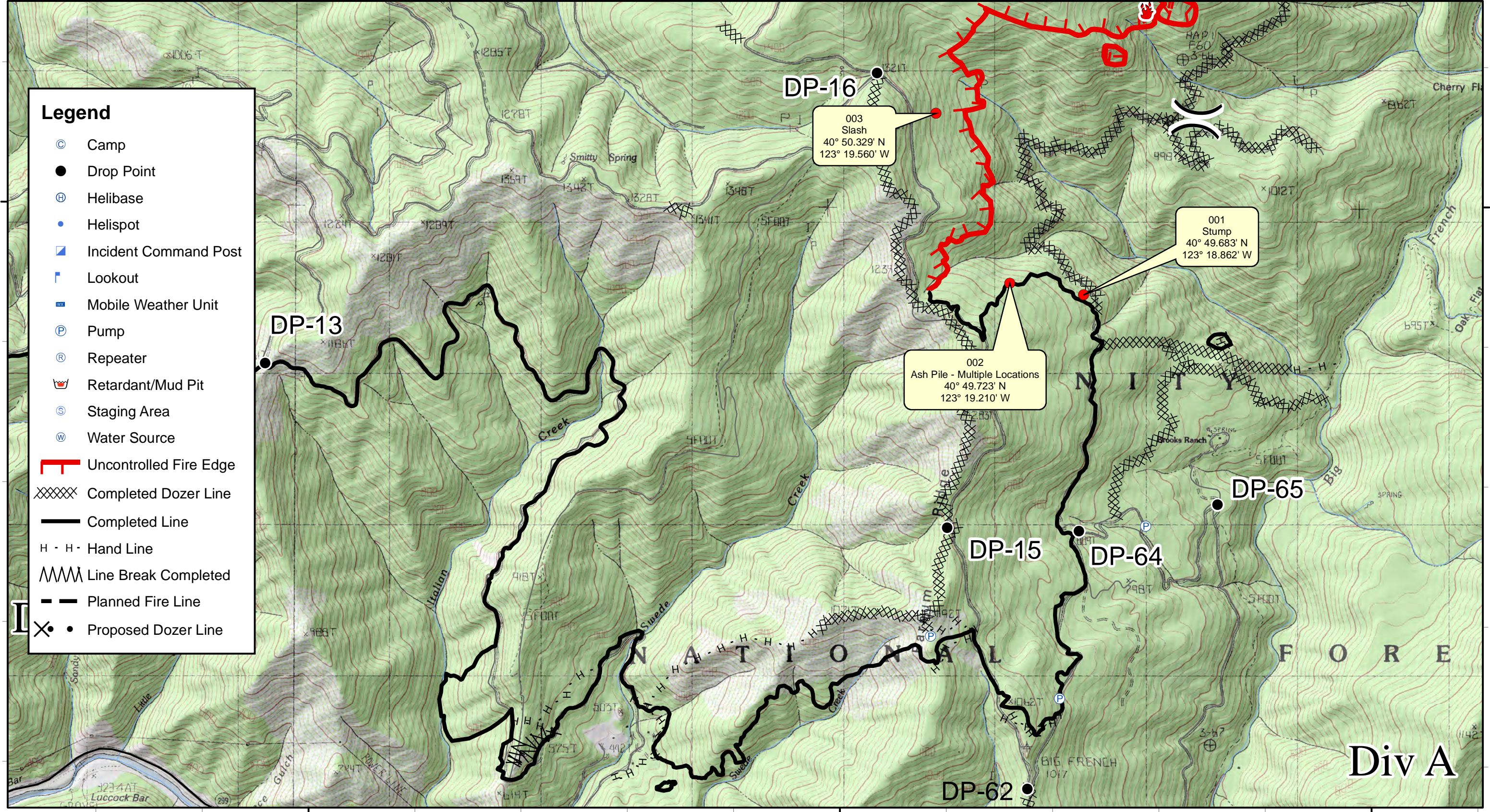
123°22'30"W

123°20'0"W

123°17'30"W

Legend

- ⊙ Camp
- Drop Point
- ⊕ Helibase
- Helispot
- ▣ Incident Command Post
- └ Lookout
- ☒ Mobile Weather Unit
- Ⓟ Pump
- Ⓡ Repeater
- 🛑 Retardant/Mud Pit
- Ⓢ Staging Area
- Ⓜ Water Source
- └ Uncontrolled Fire Edge
- XXXXX Completed Dozer Line
- Completed Line
- H · H · Hand Line
- 〰 Line Break Completed
- - - Planned Fire Line
- ⊗ Proposed Dozer Line



003
Slash
40° 50.329' N
123° 19.560' W

001
Stump
40° 49.683' N
123° 18.862' W

002
Ash Pile - Multiple Locations
40° 49.723' N
123° 19.210' W

ASTRON'S EMERGENCY OPERATIONAL SERVICES
www.FETrsponse.com
805.218.9646

VETS
Cost Effective Infrared

Aspen Helicopters
www.aspenhelo.com
805.985.5416

- Hot Spot - Significant Priority (Considerable Threat to Fireline)
- Hot Spot - Moderate Priority (Possible Threat to Fireline)
- 🔥 Live Fire - Uncontained Spot Fire or Fire Front

River Complex

CA-SHF-002066

DATUM WGS 84

Infrared Survey - Div A (Page 6)
Infrared Data Captured on 20150908 @ 1615

0 0.5 1 Miles

September 8, 2015

Div A