

123°22'30"W

123°20'0"W

123°17'30"W

40°50'0"N

40°50'0"N

123°22'30"W

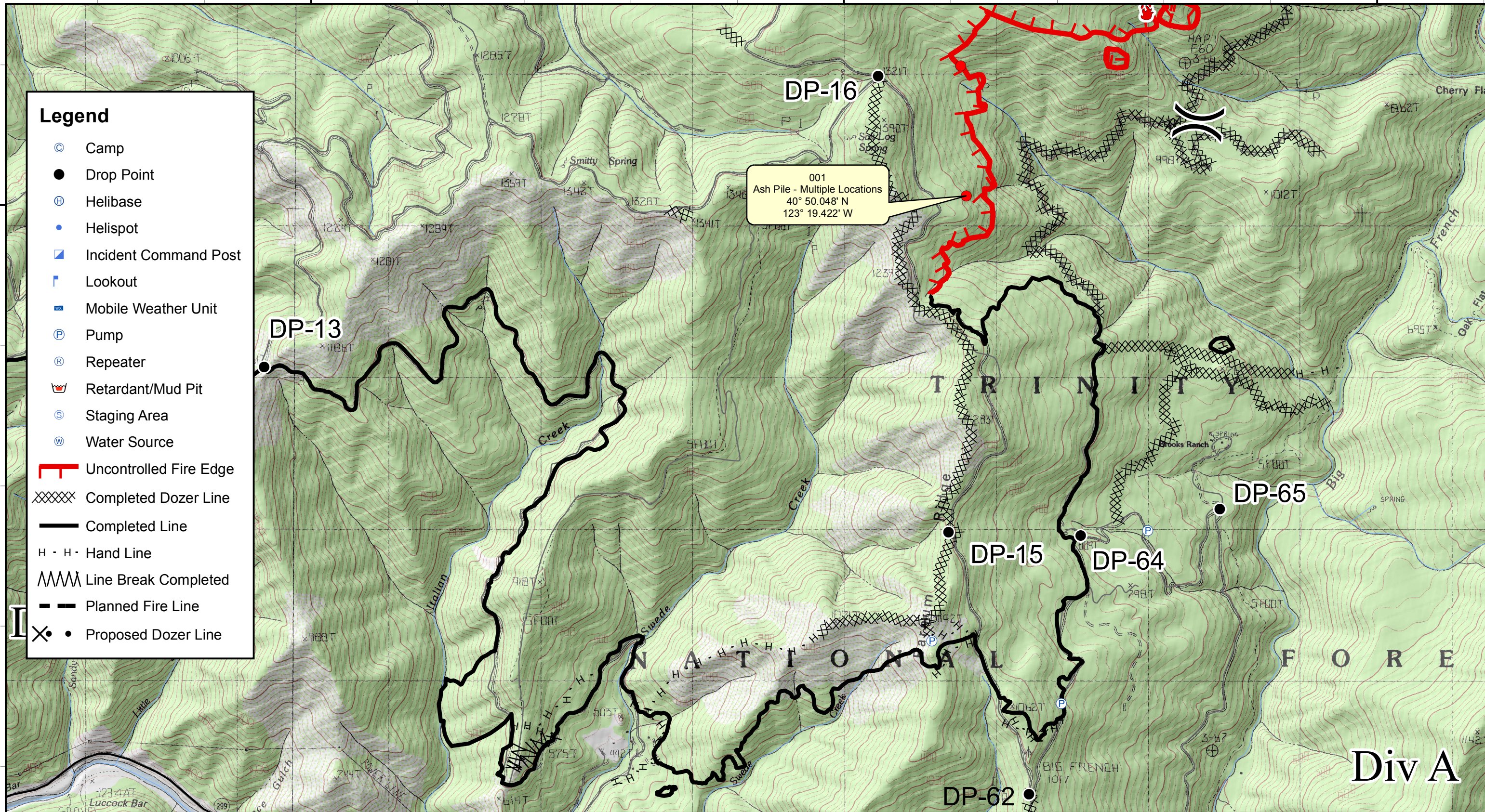
123°20'0"W

123°17'30"W

### Legend

- ⊙ Camp
- Drop Point
- ⊕ Helibase
- Helispot
- ▣ Incident Command Post
- └ Lookout
- ☒ Mobile Weather Unit
- Ⓟ Pump
- Ⓡ Repeater
- 🛑 Retardant/Mud Pit
- Ⓢ Staging Area
- Ⓜ Water Source
- └ Uncontrolled Fire Edge
- XXXXX Completed Dozer Line
- Completed Line
- H · H · Hand Line
- 〰 Line Break Completed
- - - Planned Fire Line
- ⊗ Proposed Dozer Line

001  
Ash Pile - Multiple Locations  
40° 50.048' N  
123° 19.422' W



# Div A

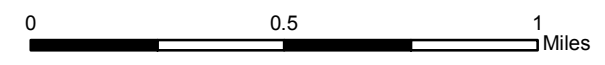
# River Complex

## CA-SHF-002066

DATUM WGS 84

### Infrared Survey - Div A (Page 6)

Infrared Data Captured on 20150910 @ 1700



VETERAN'S EMERGENCY TECHNICAL SERVICES  
www.VETSresponse.com  
805.218.9646

# VETS

Cost Effective Infrared

Aspen Helicopters  
www.aspenhelo.com  
805.985.5416

- Hot Spot - Significant Priority (Considerable Threat to Fireline)
- Hot Spot - Moderate Priority (Possible Threat to Fireline)
- 🔥 Live Fire - Uncontained Spot Fire or Fire Front