

123°20'0"W

123°17'30"W

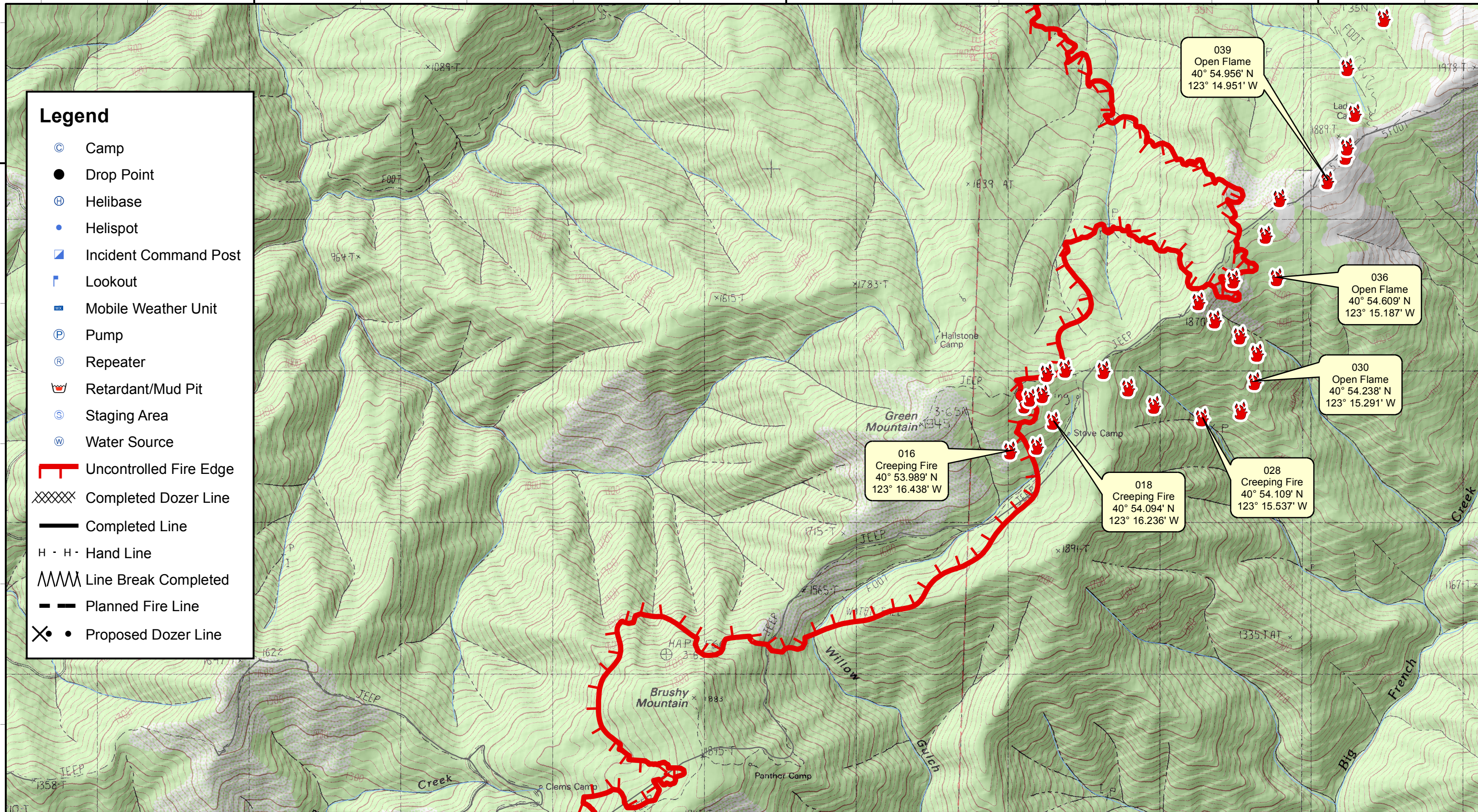
123°15'0"W

40°55'0"N

40°55'0"N

Legend

- ⊙ Camp
- Drop Point
- ⊕ Helibase
- Helispot
- ▣ Incident Command Post
- ▤ Lookout
- ☒ Mobile Weather Unit
- Ⓟ Pump
- Ⓡ Repeater
- 🔥 Retardant/Mud Pit
- Ⓢ Staging Area
- Ⓜ Water Source
- ┃ Uncontrolled Fire Edge
- XXXXX Completed Dozer Line
- Completed Line
- H · H · Hand Line
- 〰 Line Break Completed
- - - Planned Fire Line
- ⊗ • Proposed Dozer Line



123°20'0"W

123°17'30"W

123°15'0"W



- Hot Spot - Significant Priority (Considerable Threat to Fireline)
- Hot Spot - Moderate Priority (Possible Threat to Fireline)
- 🔥 Live Fire - Uncontained Spot Fire or Fire Front

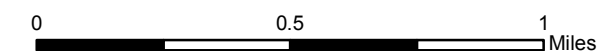
River Complex

CA-SHF-002066

DATUM WGS 84

Infrared Survey - Div O (Page 2)

Infrared Data Captured on 20150910 @ 1700



September 10, 2015