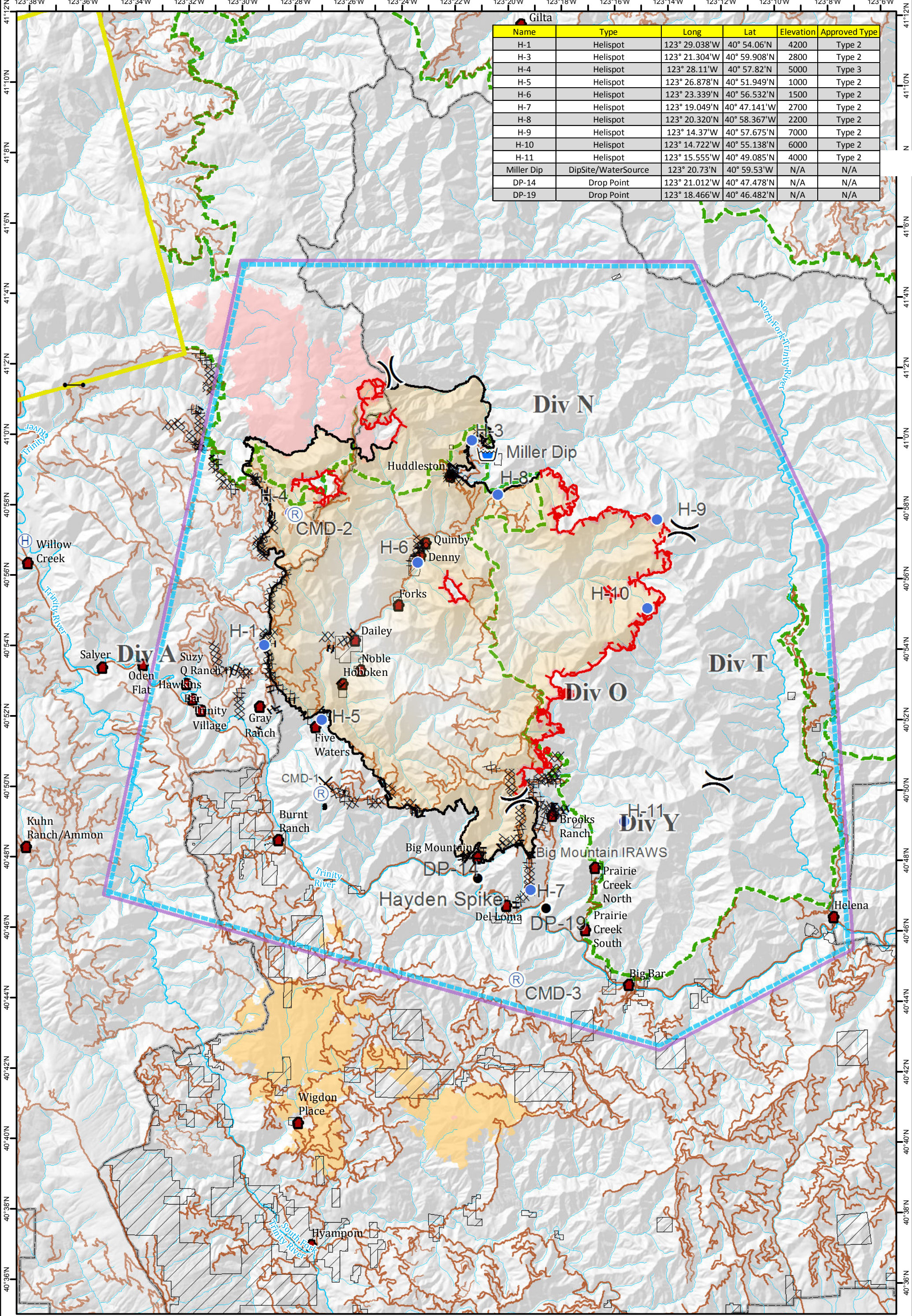


Name	Type	Long	Lat	Elevation	Approved Type
H-1	Helispot	123° 29.038'W	40° 54.06'N	4200	Type 2
H-3	Helispot	123° 21.304'W	40° 59.908'N	2800	Type 2
H-4	Helispot	123° 28.11'W	40° 57.82'N	5000	Type 3
H-5	Helispot	123° 26.878'W	40° 51.949'N	1000	Type 2
H-6	Helispot	123° 23.339'W	40° 56.532'N	1500	Type 2
H-7	Helispot	123° 19.049'W	40° 47.141'W	2700	Type 2
H-8	Helispot	123° 20.320'N	40° 58.367'W	2200	Type 2
H-9	Helispot	123° 14.37'W	40° 57.675'N	7000	Type 2
H-10	Helispot	123° 14.722'W	40° 55.138'N	6000	Type 2
H-11	Helispot	123° 15.555'W	40° 49.085'N	4000	Type 2
Miller Dip	DipSite/WaterSource	123° 20.73'N	40° 59.53'W	N/A	N/A
DP-14	Drop Point	123° 21.012'W	40° 47.478'N	N/A	N/A
DP-19	Drop Point	123° 18.466'W	40° 46.482'N	N/A	N/A



Air Operations
 River Complex
 CA-SHF-002066
 09/13/2015

TFR	Drop Point	Retardant/Mud Pit	Uncontrolled Fire Edge	Line Break Completed	K Rail	Wilderness
Helibase	Repeater	Completed Dozer Line	Planned Fire Line	Proposed Dozer Line	Roads	South Complex
Helispot	Completed Line	H - Hand Line	Towns	NON-FS	National Forest Boundary	2013 Corral Fire