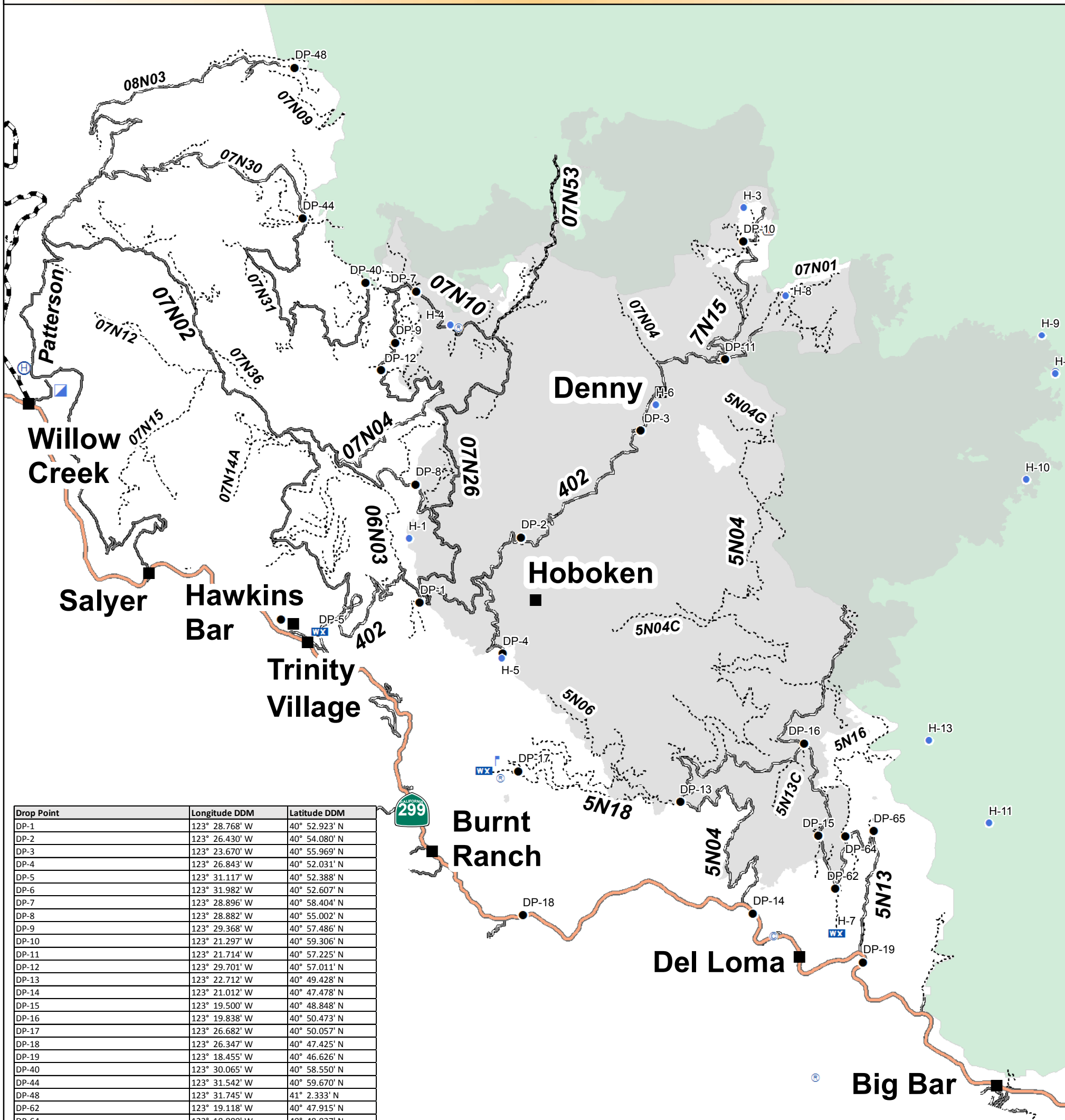


Transportation

River Complex

CA-SHF-002066

09/15/2015



Drop Point	Longitude DDM	Latitude DDM
DP-1	123° 28.768' W	40° 52.923' N
DP-2	123° 26.430' W	40° 54.080' N
DP-3	123° 23.670' W	40° 55.969' N
DP-4	123° 26.843' W	40° 52.031' N
DP-5	123° 31.117' W	40° 52.388' N
DP-6	123° 31.982' W	40° 52.607' N
DP-7	123° 28.896' W	40° 58.404' N
DP-8	123° 28.882' W	40° 55.002' N
DP-9	123° 29.368' W	40° 57.486' N
DP-10	123° 21.297' W	40° 59.306' N
DP-11	123° 21.714' W	40° 57.225' N
DP-12	123° 29.701' W	40° 57.011' N
DP-13	123° 22.712' W	40° 49.428' N
DP-14	123° 21.012' W	40° 47.478' N
DP-15	123° 19.500' W	40° 48.848' N
DP-16	123° 19.838' W	40° 50.473' N
DP-17	123° 26.682' W	40° 50.057' N
DP-18	123° 26.347' W	40° 47.425' N
DP-19	123° 18.455' W	40° 46.626' N
DP-40	123° 30.065' W	40° 58.550' N
DP-44	123° 31.542' W	40° 59.670' N
DP-48	123° 31.745' W	41° 2.333' N
DP-62	123° 19.118' W	40° 47.915' N
DP-64	123° 18.880' W	40° 48.837' N
DP-65	123° 18.228' W	40° 48.933' N

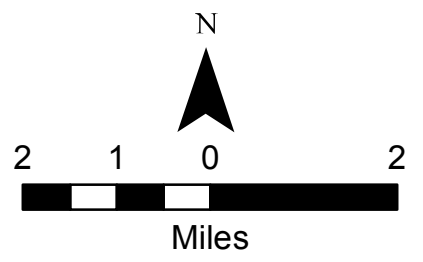
Helispot	Longitude DDM	Latitude DDM
H-1	123° 29.038' W	40° 54.060' N
H-3	123° 21.304' W	40° 59.908' N
H-4	123° 28.110' W	40° 57.820' N
H-5	123° 26.878' W	40° 51.949' N
H-6	123° 23.317' W	40° 56.429' N
H-7	123° 19.049' W	40° 47.141' N
H-8	123° 20.320' W	40° 58.367' N
H-9	123° 14.37' W	40° 57.675' N
H-10	123° 14.722' W	40° 55.138' N
H-11	123° 15.555' W	40° 49.085' N
H-12	123° 14.050' W	40° 57.000' N
H-13	123° 16.965' W	40° 50.544' N
Willow Creek Helibase	123° 38.000' W	40° 57.000' N

Camp	Longitude DDM	Latitude DDM
ICP	123° 37.144' W	40° 56.616' N
Hayden Spike	123° 20.551' W	40° 47.087' N

Weather Station (RAWS)	Longitude DDM	Latitude DDM
Iron Mtn. RAWS	123° 27.289' W	40° 49.969' N
Big Mountain RAWS	123° 19.083' W	40° 47.133' N
Trinity Village RAWS	123° 31.108' W	40° 52.395' N

Other	Longitude DDM	Latitude DDM
Ironside Lookout	123° 26.985' W	40° 50.150' N
Repeater CMD-1	123° 26.894' W	40° 49.839' N
Repeater CMD-2	123° 27.909' W	40° 57.780' N
Repeater CMD-3	123° 19.561' W	40° 44.585' N
Repeater CMD-4	123° 14.049' W	40° 57.026' N
Retardant / Mud Pit (Miller Dip)	123° 20.717' W	40° 59.505' N

ICP to Denny:
 Turn left onto CA-299E
 At Hawkins Bar, turn left onto Denny Rd (402)
 ICP to Hawkins Bar is 9.5 miles
 ICP to Denny is 27 miles



- River Complex Communities
- Camp
- Drop Point
- ⊕ Helibase
- Helispot
- ▣ Incident Command Post
- Ⓜ Lookout
- Ⓜ Mobile Weather Unit
- Ⓜ Repeater
- Ⓜ Retardant/Mud Pit
- County Road
- Dirt Road
- Gravel Road
- Highway
- Paved Road
- High Clearance Vehicles
- FirePolygon
- Wilderness

