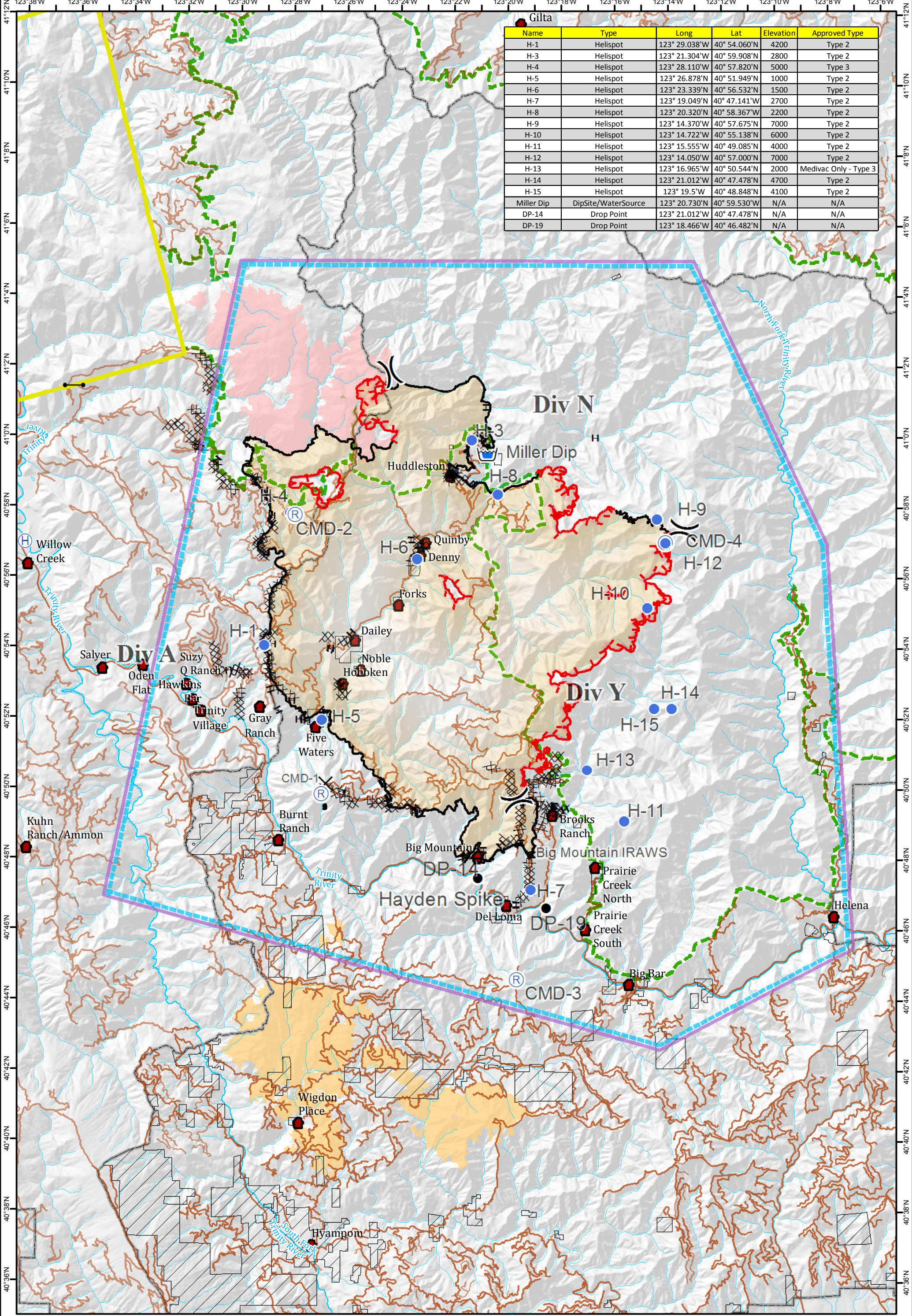


| Name | Type | Long | Lat | Elevation | Approved Type |
|------------|---------------------|---------------|--------------|-----------|-----------------------|
| H-1 | Helispot | 123° 29.038'W | 40° 54.060'N | 4200 | Type 2 |
| H-3 | Helispot | 123° 21.304'W | 40° 59.908'N | 2800 | Type 2 |
| H-4 | Helispot | 123° 28.110'W | 40° 57.820'N | 5000 | Type 3 |
| H-5 | Helispot | 123° 26.878'W | 40° 51.949'N | 1000 | Type 2 |
| H-6 | Helispot | 123° 23.339'W | 40° 56.532'N | 1500 | Type 2 |
| H-7 | Helispot | 123° 19.049'W | 40° 47.141'W | 2700 | Type 2 |
| H-8 | Helispot | 123° 20.320'W | 40° 58.367'W | 2200 | Type 2 |
| H-9 | Helispot | 123° 14.370'W | 40° 57.675'N | 7000 | Type 2 |
| H-10 | Helispot | 123° 14.722'W | 40° 55.138'N | 6000 | Type 2 |
| H-11 | Helispot | 123° 15.555'W | 40° 49.085'N | 4000 | Type 2 |
| H-12 | Helispot | 123° 14.050'W | 40° 57.000'N | 7000 | Type 2 |
| H-13 | Helispot | 123° 16.965'W | 40° 50.544'N | 2000 | Medivac Only - Type 3 |
| H-14 | Helispot | 123° 21.012'W | 40° 47.478'N | 4700 | Type 2 |
| H-15 | Helispot | 123° 19.5'W | 40° 48.848'N | 4100 | Type 2 |
| Miller Dip | DipSite/WaterSource | 123° 20.730'W | 40° 59.530'W | N/A | N/A |
| DP-14 | Drop Point | 123° 21.012'W | 40° 47.478'N | N/A | N/A |
| DP-19 | Drop Point | 123° 18.466'W | 40° 46.482'N | N/A | N/A |



Air Operations
 River Complex
 CA-SHF-002066
 09/20/2015

| | | | | | | |
|----------|---------------|----------------------|------------------------|----------------------|--------------------------|------------------|
| TFR | Drop Point | Retardant/Mud Pit | Uncontrolled Fire Edge | Line Break Completed | K Rail | Wilderness |
| Helibase | Repeater | Completed Dozer Line | Planned Fire Line | Proposed Dozer Line | Roads | South Complex |
| Helispot | H - Hand Line | Towns | Hoopa | NON-FS | National Forest Boundary | 2013 Corral Fire |