

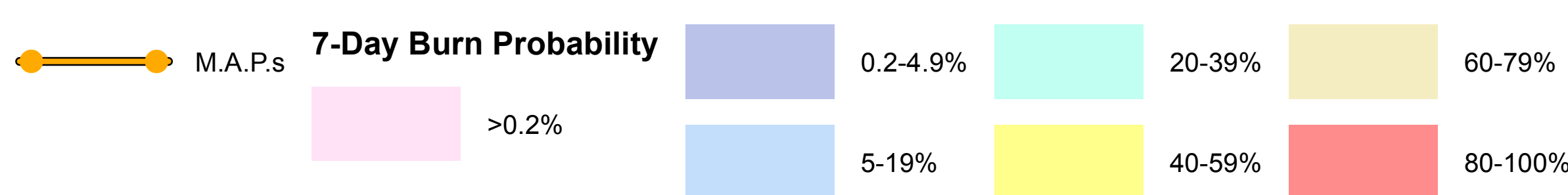
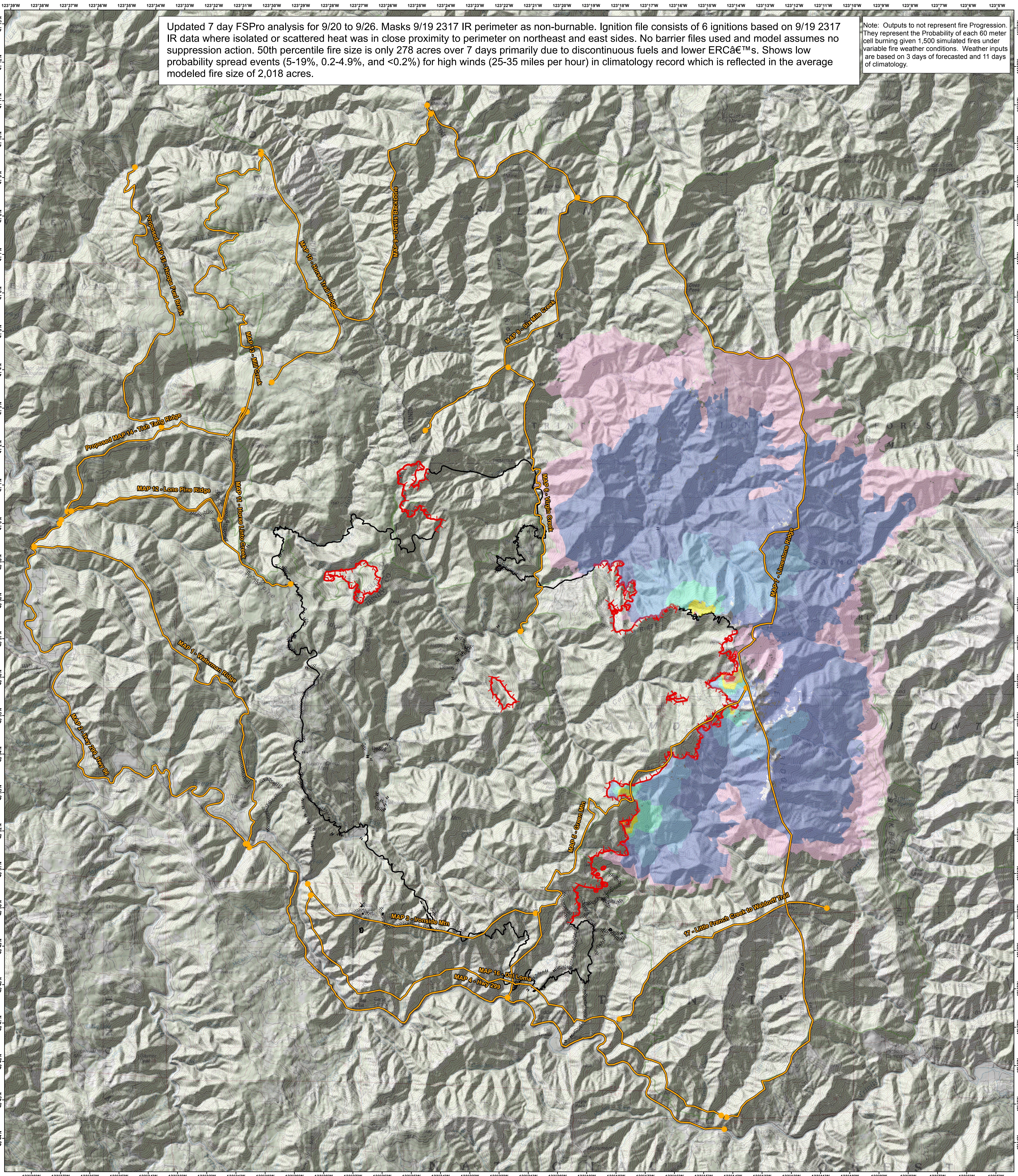
River Complex CA-SHF-002066

WFDSS – FIRE SPREAD PROBABILITY – SHF River Complex (2015-CA-SHF-002066) 09/20 – 7 DAYS – 60m Res 1500 Fire Sim
ERC - 40404 - BRUSH MTN (9.6 miles West) WINDS: 40404 - BRUSH MTN (9.6 miles West) File: 8.27 Updated 7 days FSPro,
Analyst: Larry Hood

9/20/2015

Updated 7 day FSPro analysis for 9/20 to 9/26. Masks 9/19 2317 IR perimeter as non-burnable. Ignition file consists of 6 ignitions based on 9/19 2317 IR data where isolated or scattered heat was in close proximity to perimeter on northeast and east sides. No barrier files used and model assumes no suppression action. 50th percentile fire size is only 278 acres over 7 days primarily due to discontinuous fuels and lower ERCs. Shows low probability spread events (5-19%, 0.2-4.9%, and <0.2%) for high winds (25-35 miles per hour) in climatology record which is reflected in the average modeled fire size of 2,018 acres.

Note: Outputs do not represent fire Progression. They represent the Probability of each 60 meter cell burning given 1,500 simulated fires under variable fire weather conditions. Weather inputs are based on 3 days of forecasted and 11 days of climatology.



Average Size	2,018
90th Percentile	5,134
70th Percentile	1,031
50th Percentile	278
30th Percentile	99
10th Percentile	56
Largest Fire	46,496

9/20 SHF River Complex FSPro 7d 6hr
For More information about WFDSS:
https://wfdss.usgs.gov/wfdss/wfdss_home.shtml

