

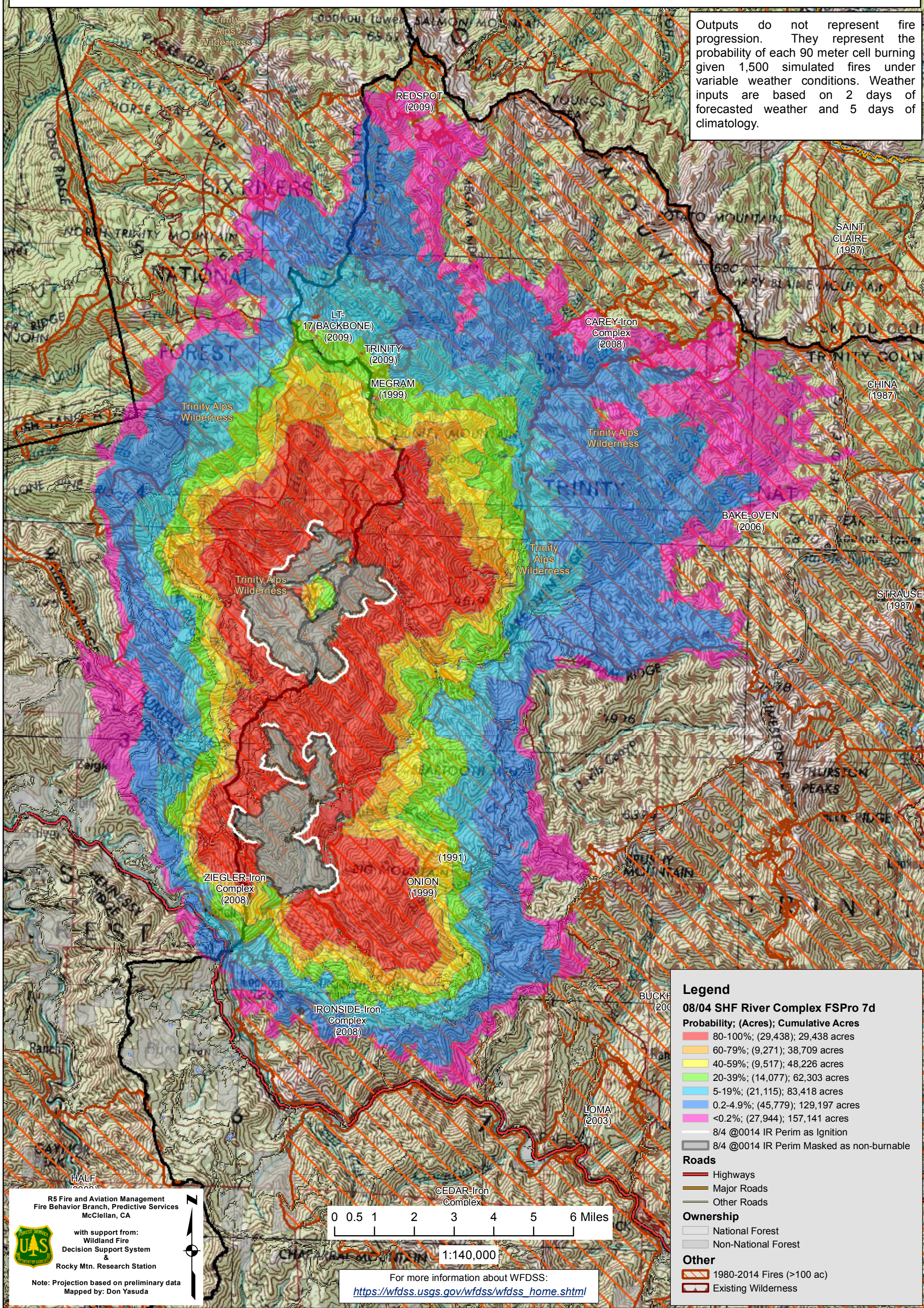
August 4, 2015

WFDSS - FSPRO PROBABILITY: SHF River Complex (2015-CASHF-002066)
08/04 - 7 DAYS - 90m Res; 1500 Fire Sim
ERC: 40404 - BRUSH MTN (12.1 miles); WINDS: 40404 - BRUSH MTN (12.1 miles)
File: 8.4 Updated 7 day FSPro; Analyst: Larry Hood

CASGOW (1987)

Notes: Updated 7 day FSPro analysis for 8/4 to 8/10 for 2 large fires. Masks 8/4 0014 IR perimeters, 7,060 acres as non-burnable. Uses 8/4 0014 IR intense heat for ignition file. Model assumes NO suppression action. **Expect spread into low probability surfaces early in the analysis period due to extreme drought.**

Outputs do not represent fire progression. They represent the probability of each 90 meter cell burning given 1,500 simulated fires under variable weather conditions. Weather inputs are based on 2 days of forecasted weather and 5 days of climatology.



Legend

08/04 SHF River Complex FSPro 7d

Probability; (Acres); Cumulative Acres

- 80-100%; (29,438); 29,438 acres
- 60-79%; (9,271); 38,709 acres
- 40-59%; (9,517); 48,226 acres
- 20-39%; (14,077); 62,303 acres
- 5-19%; (21,115); 83,418 acres
- 0.2-4.9%; (45,779); 129,197 acres
- <0.2%; (27,944); 157,141 acres

- 8/4 @0014 IR Perim as Ignition
- 8/4 @0014 IR Perim Masked as non-burnable

Roads

- Highways
- Major Roads
- Other Roads

Ownership

- National Forest
- Non-National Forest

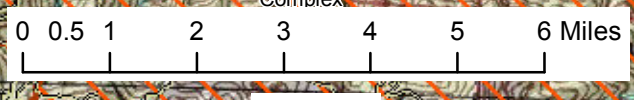
Other

- 1980-2014 Fires (>100 ac)
- Existing Wilderness

R5 Fire and Aviation Management
 Fire Behavior Branch, Predictive Services
 McClellan, CA

with support from:
 Wildland Fire
 Decision Support System
 &
 Rocky Mtn. Research Station

Note: Projection based on preliminary data
 Mapped by: Don Yasuda



For more information about WFDSS:
https://wfdss.usgs.gov/wfdss/wfdss_home.shtml