

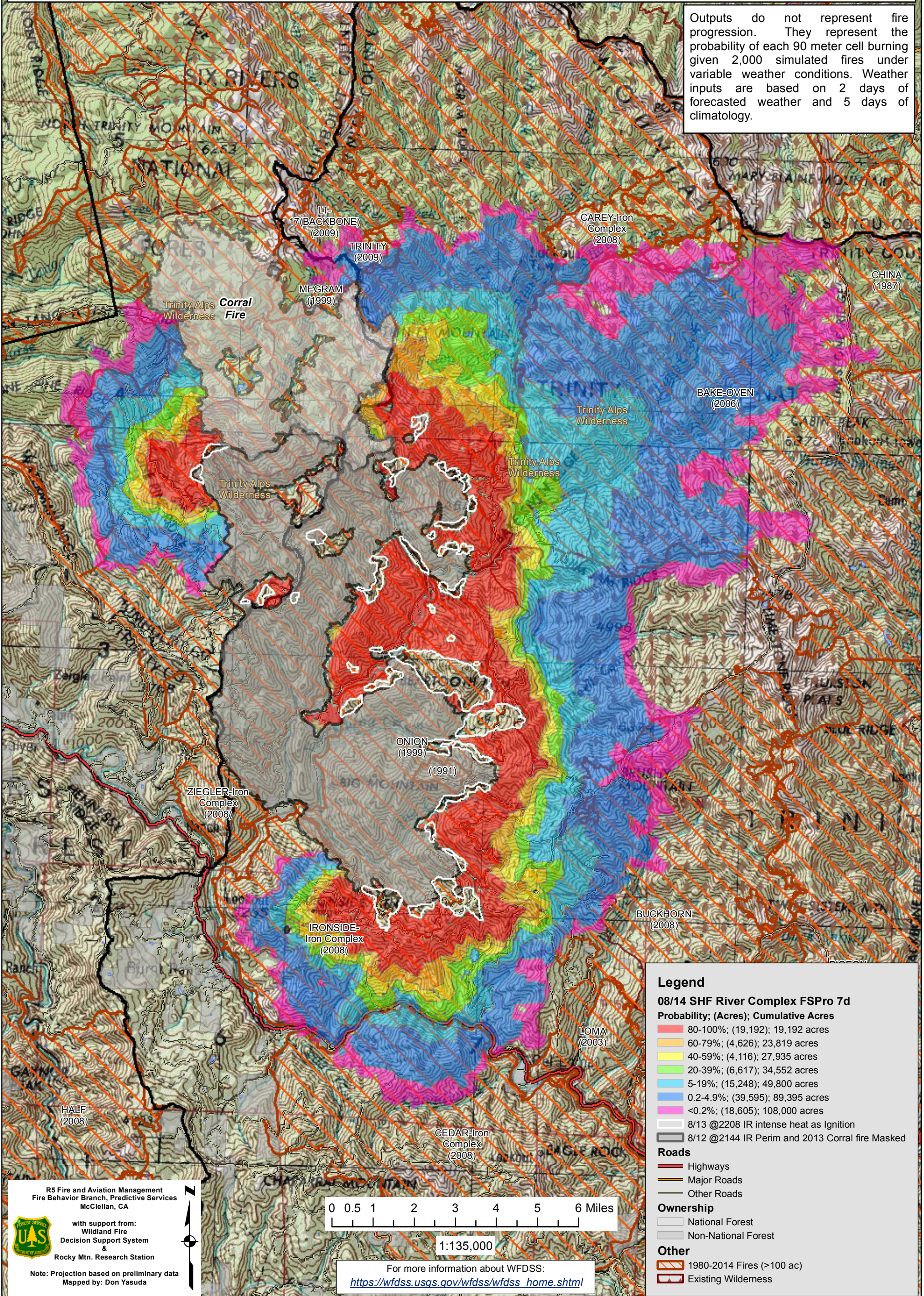
August 14, 2015

**WFDSS - FSPRO PROBABILITY: SHF River Complex (2015-CASHF-002066)**  
**08/14 - 7 DAYS - 90m Res; 2000 Fire Sim**  
**ERC: 40404 - BRUSH MTN (12.1 miles); WINDS: 40404 - BRUSH MTN (12.1 miles)**  
**File: 8.14 Updated 7 day FSPRO; Analyst: Larry Hood**

GLASGOW (1987)

Notes: Updated 7 day FSPRO analysis for 8/14 to 8/20. Masks 8/12 2144 IR perimeters and 2013 Corral fire as non-burnable and uses 8/13 2208 IR intense heat for ignition file to model spread in areas showing recent growth. No barrier files used and model assumes no suppression action. **Expect spread into low probability surfaces early in the analysis period due to extreme drought conditions.**

Outputs do not represent fire progression. They represent the probability of each 90 meter cell burning given 2,000 simulated fires under variable weather conditions. Weather inputs are based on 2 days of forecasted weather and 5 days of climatology.



**Legend**

**08/14 SHF River Complex FSPRO 7d**  
**Probability; (Acres); Cumulative Acres**

- 80-100%; (19,192); 19,192 acres
- 60-79%; (4,626); 23,819 acres
- 40-59%; (4,116); 27,935 acres
- 20-39%; (6,617); 34,552 acres
- 5-19%; (15,248); 49,800 acres
- 0.2-4.9%; (39,595); 89,395 acres
- <0.2%; (18,605); 108,000 acres

- 8/13 @2208 IR intense heat as Ignition
- 8/12 @2144 IR Perim and 2013 Corral fire Masked

**Roads**

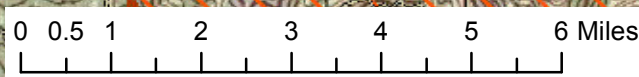
- Highways
- Major Roads
- Other Roads

**Ownership**

- National Forest
- Non-National Forest

**Other**

- 1980-2014 Fires (>100 ac)
- Existing Wilderness



1:135,000

For more information about WFDSS:  
[https://wfdss.usgs.gov/wfdss/wfdss\\_home.shtml](https://wfdss.usgs.gov/wfdss/wfdss_home.shtml)

R5 Fire and Aviation Management  
 Fire Behavior Branch, Predictive Services  
 McClellan, CA

with support from:  
 Wildland Fire  
 Decision Support System  
 &  
 Rocky Mtn. Research Station

Note: Projection based on preliminary data  
 Mapped by: Don Yasuda