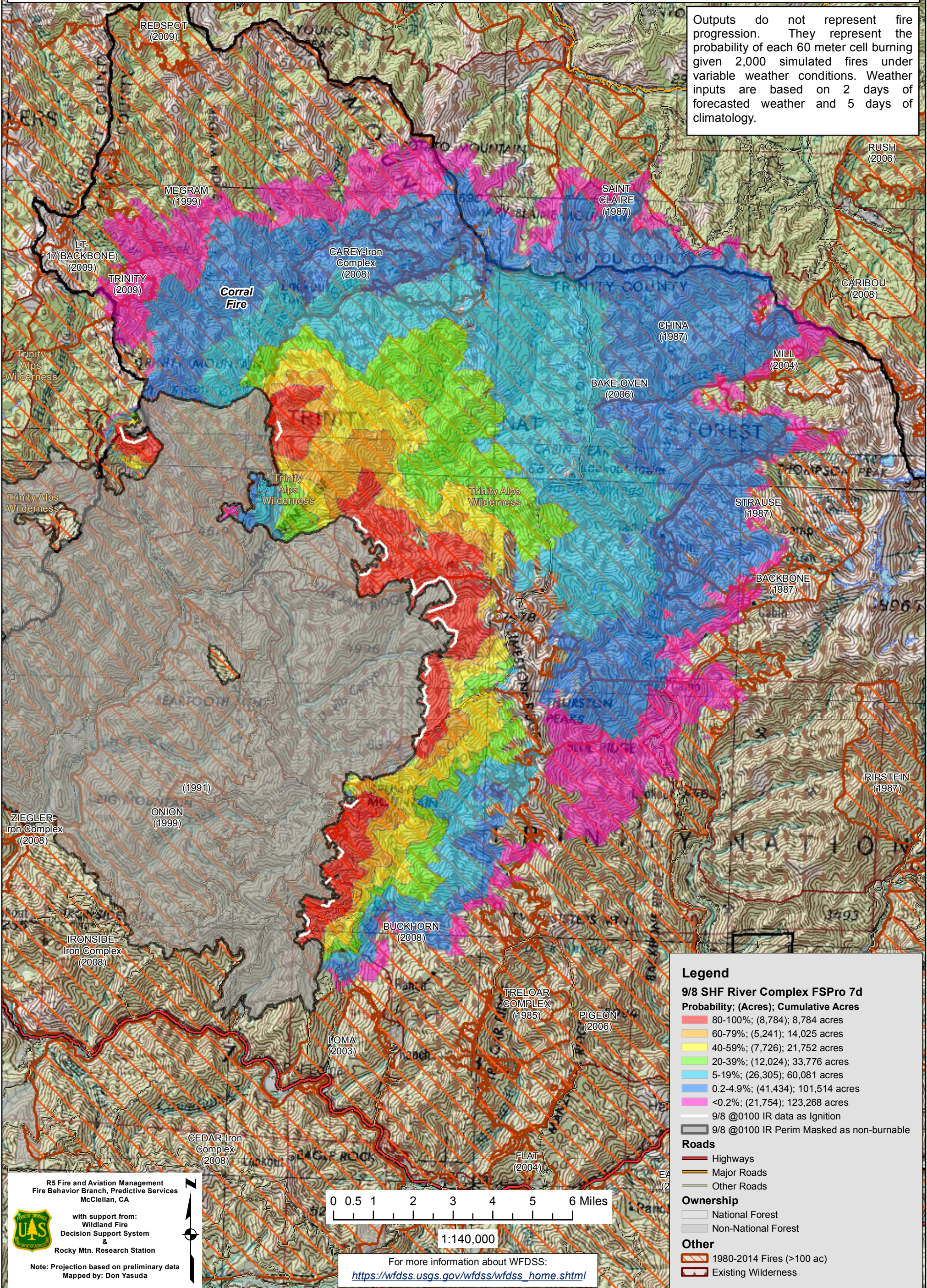


September 8, 2015

WFDSS - FSPRO PROBABILITY: SHF River Complex (2015-CASHF-002066)
09/08 - 7 DAYS - 60m Res; 2000 Fire Sim
ERC: 40404 - BRUSH MTN (12.1 miles); WINDS: 40404 - BRUSH MTN (12.1 miles)
File: 9.8 Updated 7 day FSPro; Analyst: Larry Hood

Notes: Updated 7 day FSPro analysis for 9/8 to 9/14. Masks 9/8 0100 IR perimeter as non-burnable. Ignition file based on 9/8 0100 IR data (note that VIIRS IR data is not available today). On a fire this large, it is challenging to capture the specific areas where fire could still actively spread. No barrier files used. **Expect spread into low probability surfaces early in the analysis period due to extreme drought conditions along with very dry and unseasonably warm conditions forecast through Friday. Model assumes no suppression action.**

Outputs do not represent fire progression. They represent the probability of each 60 meter cell burning given 2,000 simulated fires under variable weather conditions. Weather inputs are based on 2 days of forecasted weather and 5 days of climatology.



Legend

9/8 SHF River Complex FSPro 7d

Probability; (Acres); Cumulative Acres

- 80-100%; (8,784); 8,784 acres
- 60-79%; (5,241); 14,025 acres
- 40-59%; (7,726); 21,752 acres
- 20-39%; (12,024); 33,776 acres
- 5-19%; (26,305); 60,081 acres
- 0.2-4.9%; (41,434); 101,514 acres
- <0.2%; (21,754); 123,268 acres

- 9/8 @0100 IR data as Ignition
- 9/8 @0100 IR Perim Masked as non-burnable

Roads

- Highways
- Major Roads
- Other Roads

Ownership

- National Forest
- Non-National Forest

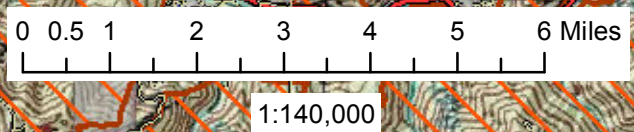
Other

- 1980-2014 Fires (>100 ac)
- Existing Wilderness

R5 Fire and Aviation Management
 Fire Behavior Branch, Predictive Services
 McClellan, CA

with support from:
 Wildland Fire
 Decision Support System &
 Rocky Mtn. Research Station

Note: Projection based on preliminary data
 Mapped by: Don Yasuda



For more information about WFDSS:
https://wfdss.usgs.gov/wfdss/wfdss_home.shtml