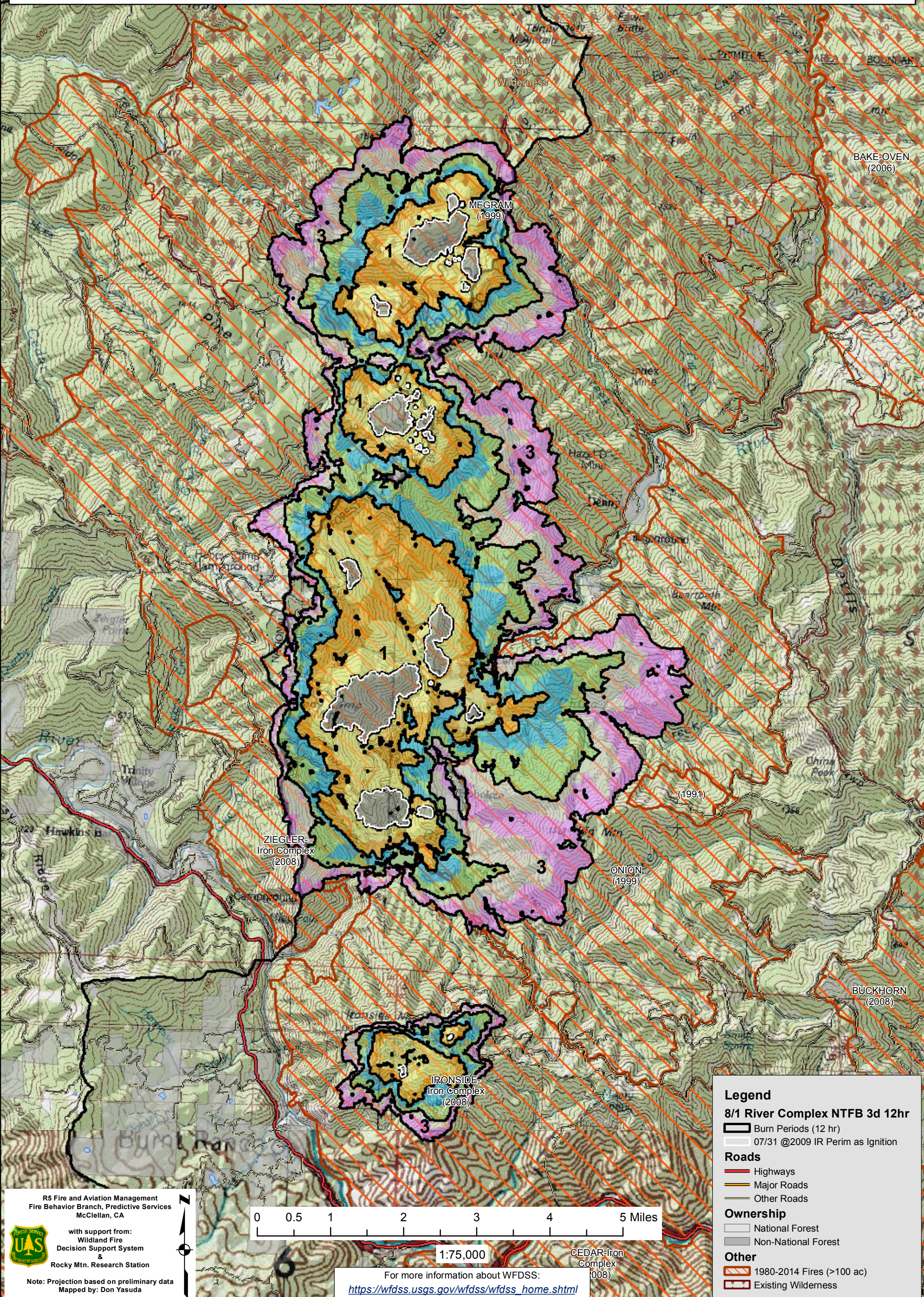


August 01, 2015

WFDSS - NEAR TERM FIRE BEHAVIOR ANALYSIS: River Complex (2015-CASHF-002066)
08/01 - 3 DAYS - 12hr Burn Periods (0900-2100) - 30m Res
Fuel Moisture & Wx: 40404 - BRUSH MTN (12.1 miles)
File:8.1 3 day Near Term Fire Behavior; Analyst: Larry Hood

CAREY-IRON Complex (2008)

Note: 8/1 Initial 3 day Near Term analysis. Uses 7.31 2009 IR perimeter data for approximately 12 IR heat polygons within the River Complex WFDSS planning area. Model assumes no suppression action. **Fire spread may be under predicted due to extreme drought conditions. Colors showing 6 hour time steps.**



Legend

8/1 River Complex NTFB 3d 12hr

- Burn Periods (12 hr)
- 07/31 @2009 IR Perim as Ignition

Roads

- Highways
- Major Roads
- Other Roads

Ownership

- National Forest
- Non-National Forest

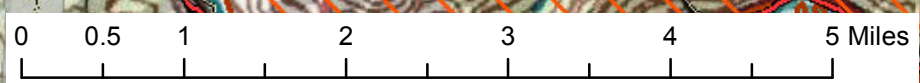
Other

- 1980-2014 Fires (>100 ac)
- Existing Wilderness

R5 Fire and Aviation Management
 Fire Behavior Branch, Predictive Services
 McClellan, CA

with support from:
 Wildland Fire
 Decision Support System &
 Rocky Mtn. Research Station

Note: Projection based on preliminary data
 Mapped by: Don Yasuda

1:75,000

For more information about WFDSS:
https://wfdss.usgs.gov/wfdss/wfdss_home.shtml

CEDAR-IRON Complex (2008)