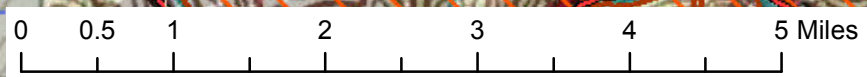
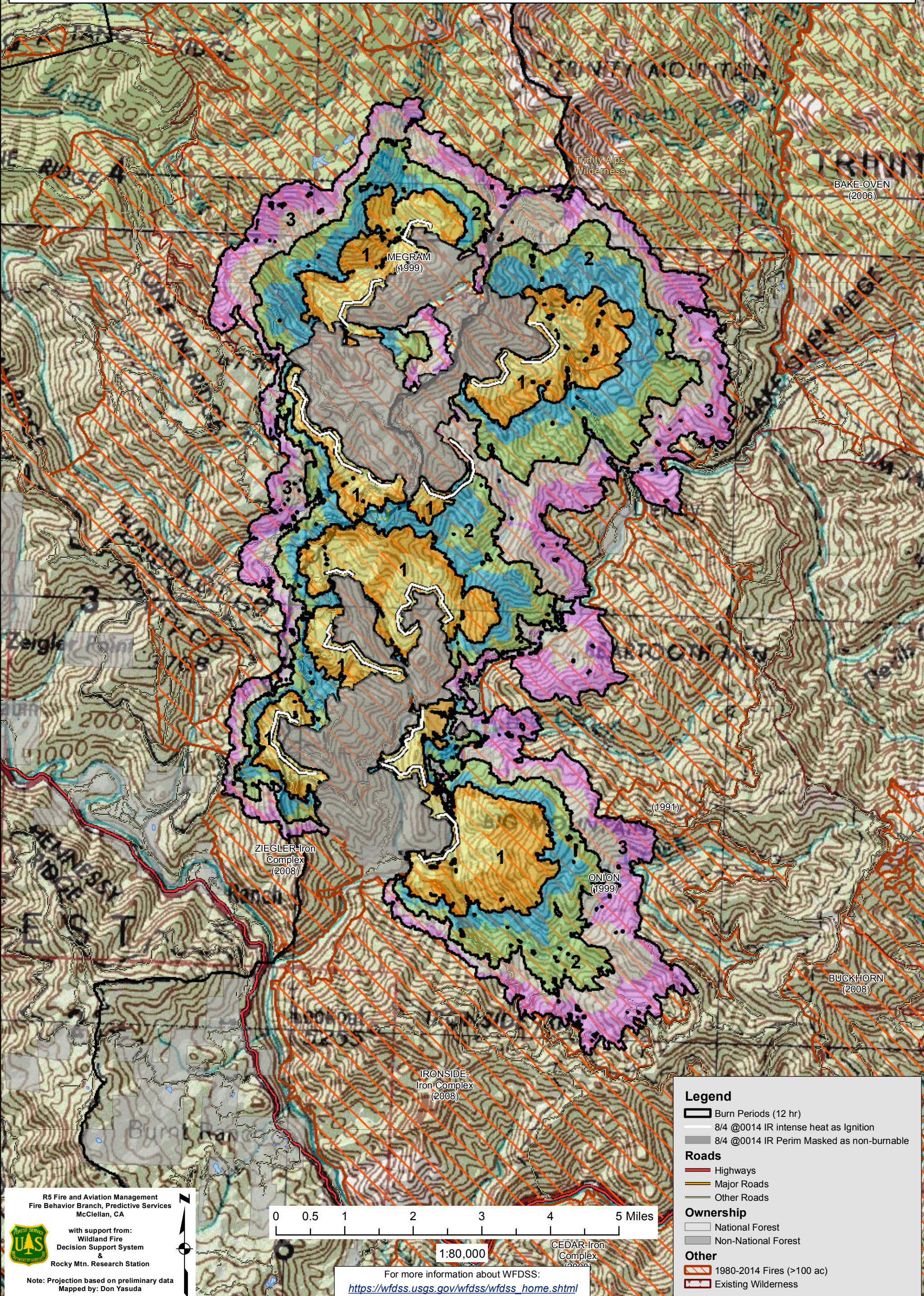


WFDSS - NEAR TERM FIRE BEHAVIOR ANALYSIS: SHF River Complex (2015-CASHF-002066)
08/04 - 3 DAYS - 12hr Burn Periods (0900-2100) - 30m Res
Fuel Moisture & Wx: 40404 - BRUSH MTN (12.1 miles)
File:8.4 3 day Near Term Fire Behavior; Analyst: Larry Hood

CAREY-Iron Complex (2008)

Note: Updated day Near Term fire behavior analysis for 8/4 to 8/6 for 2 large fires. Masks 8/4 0014 IR perimeters, 7,060 acres as non-burnable. Uses 8/4 0014 IR intense heat for ignition file. Model assumes no suppression action. Fire spread may be under predicted due to extreme drought conditions. Colors showing 6 hour time steps.



1:80,000

For more information about WFDSS:
https://wfdss.usgs.gov/wfdss/wfdss_home.shtml

Legend

- Burn Periods (12 hr)
- 8/4 @0014 IR intense heat as Ignition
- 8/4 @0014 IR Perim Masked as non-burnable

Roads

- Highways
- Major Roads
- Other Roads


Ownership

- National Forest
- Non-National Forest

Other

- 1980-2014 Fires (>100 ac)
- Existing Wilderness

R5 Fire and Aviation Management
Fire Behavior Branch, Predictive Services
McClellan, CA



with support from:
Wildland Fire
Decision Support System
&
Rocky Mtn. Research Station

Note: Projection based on preliminary data
Mapped by: Don Yasuda