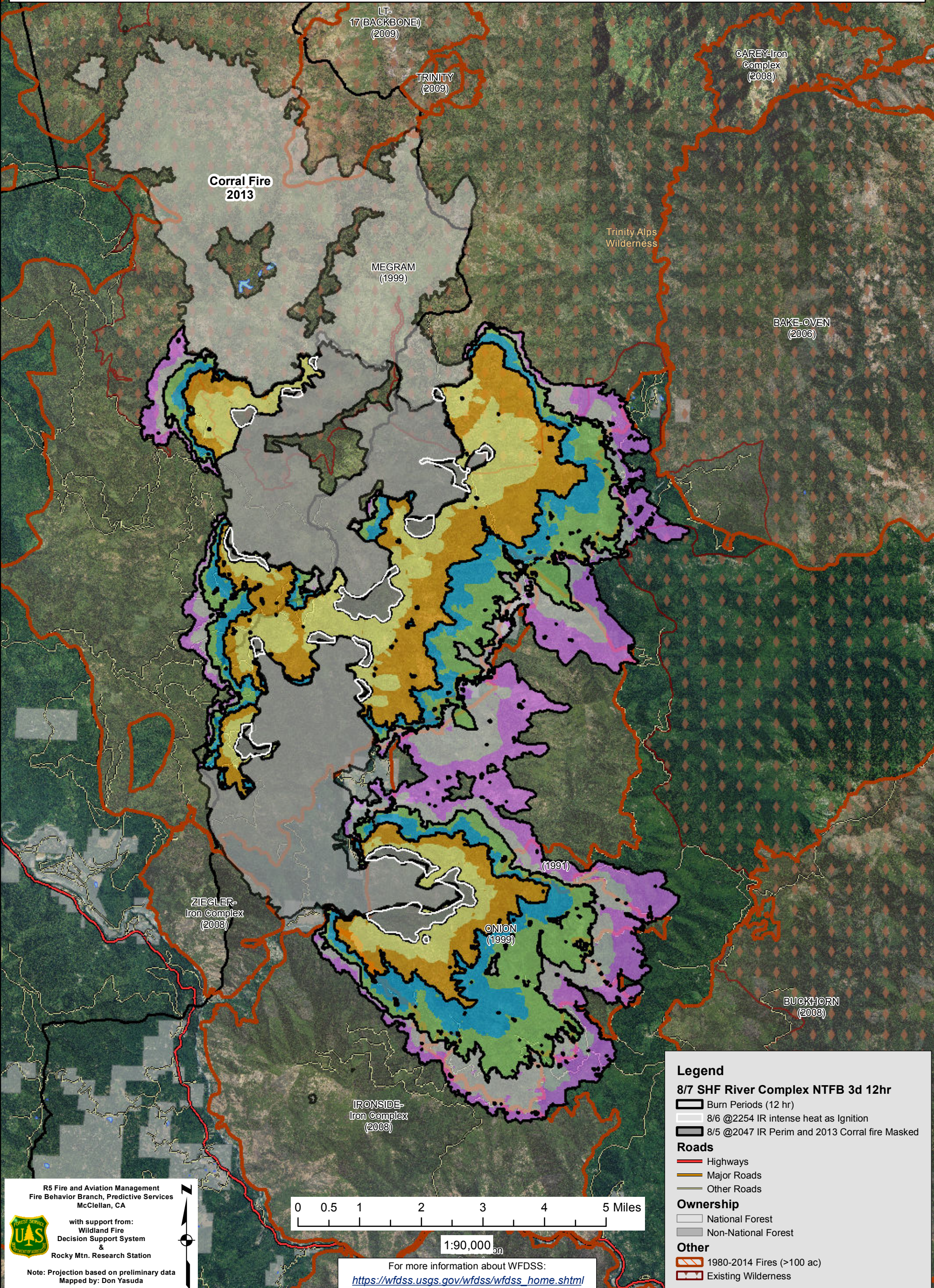



**WFDSS - NEAR TERM FIRE BEHAVIOR ANALYSIS: SHF River Complex (2015-CASHF-002066)**  
08/07 - 3 DAYS - 12hr Burn Periods (0900-2100) - 30m Res  
Fuel Moisture & Wx: 40404 - BRUSH MTN (12.1 miles)  
File:8.7 3 day Near Term Fire Behavior; Analyst: Larry Hood

Note: Updated 3 day Near Term fire behavior analysis for 8/7 to 8/9. Masks 8/5 2047 IR perimeters and 2013 Corral fire as non-burnable and uses 8/6 2254 IR intense heat for ignition file to model spread in areas showing recent growth. **Model assumes no suppression action. May under predict spread due to extreme drought conditions. Strength and duration of inversions/smoke cover remains a critical factor in predicting spread but is challenging to model. Colors showing 6 hour time steps.**

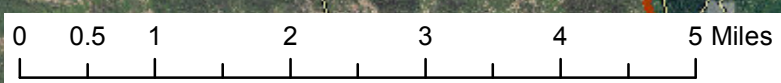


R5 Fire and Aviation Management  
Fire Behavior Branch, Predictive Services  
McClellan, CA

with support from:  
Wildland Fire  
Decision Support System  
&  
Rocky Mtn. Research Station



Note: Projection based on preliminary data  
Mapped by: Don Yasuda



1:90,000

For more information about WFDSS:  
[https://wfdss.usgs.gov/wfdss/wfdss\\_home.shtml](https://wfdss.usgs.gov/wfdss/wfdss_home.shtml)

**Legend**

**8/7 SHF River Complex NTFB 3d 12hr**

- Burn Periods (12 hr)
- 8/6 @2254 IR intense heat as Ignition
- 8/5 @2047 IR Perim and 2013 Corral fire Masked

**Roads**

- Highways
- Major Roads
- Other Roads

**Ownership**

- National Forest
- Non-National Forest

**Other**

- 1980-2014 Fires (>100 ac)
- Existing Wilderness