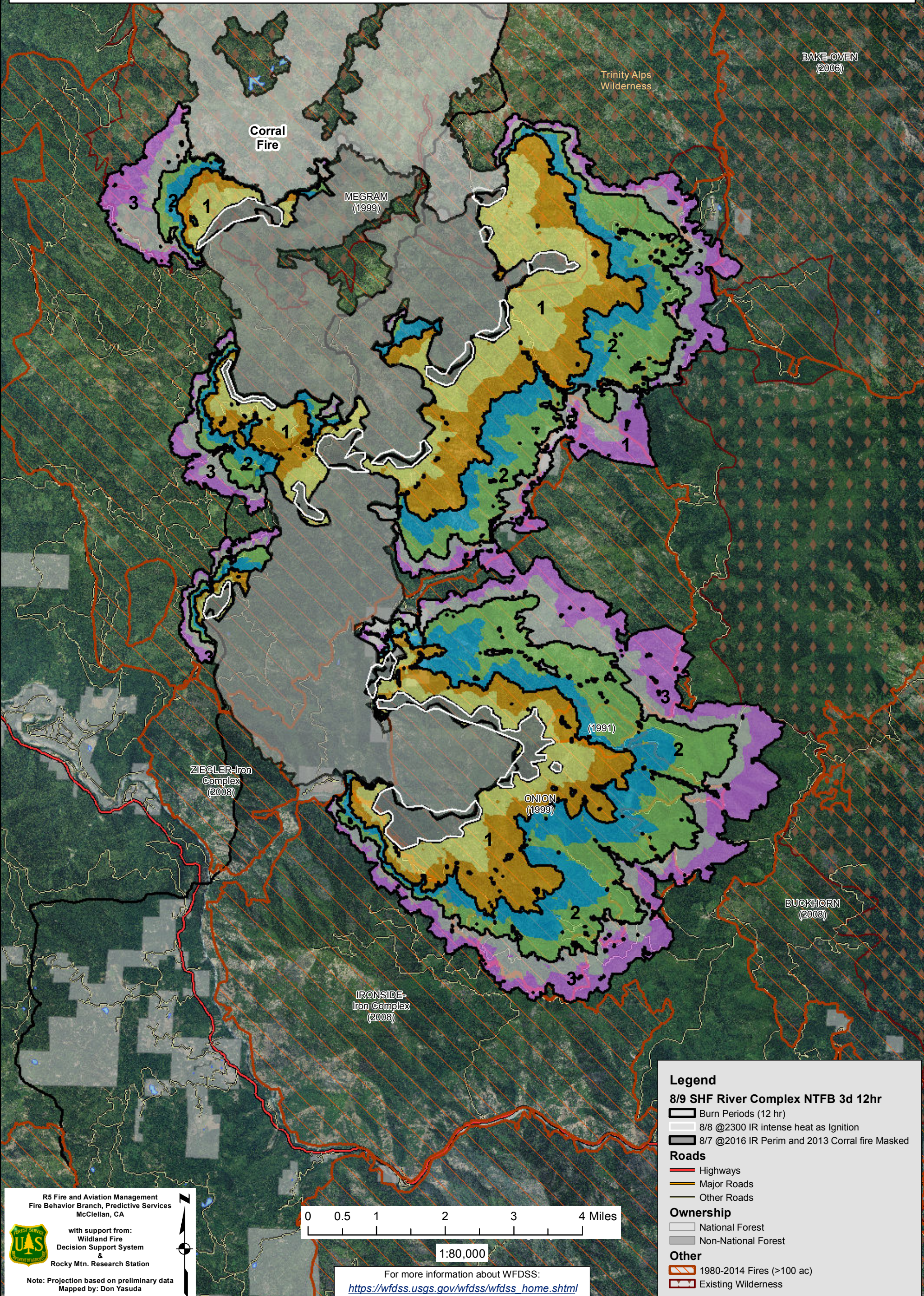


WFDSS - NEAR TERM FIRE BEHAVIOR ANALYSIS: SHF River Complex (2015-CASHF-002066)
08/09 - 3 DAYS - 12hr Burn Periods (0900-2100) - 30m Res
Fuel Moisture & Wx: 40404 - BRUSH MTN (12.1 miles)
File:8.9 to 8.11 3 day Near Term Fire Behavior; Analyst: Larry Hood

BY-iron
plex
08)

Note: Updated 3 day Near Term fire behavior analysis for 8/9 to 8/11. Masks 8/7 2016 IR perimeters and 2013 Corral fire as non-burnable and uses 8/8 2300 IR intense heat for ignition file to model spread in areas showing recent growth. Model assumes no suppression action. **May under predict spread due to extreme drought conditions and/or forecasted increase in SW winds. Colors showing 6 hour time steps.**



BAKE-OVEN
(2006)

Trinity Alps
Wilderness

Corral
Fire

MEGRAM
(1999)

ZIEGLER-Iron
Complex
(2003)

ONION
(1999)

IRONSIDE-
Iron Complex
(2003)

BUCKHORN
(2008)

Legend

8/9 SHF River Complex NTFB 3d 12hr

- Burn Periods (12 hr)
- 8/8 @2300 IR intense heat as Ignition
- 8/7 @2016 IR Perim and 2013 Corral fire Masked

Roads

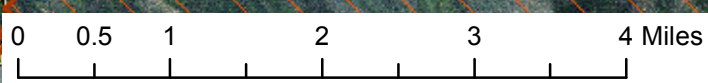
- Highways
- Major Roads
- Other Roads

Ownership

- National Forest
- Non-National Forest

Other

- 1980-2014 Fires (>100 ac)
- Existing Wilderness



1:80,000

R5 Fire and Aviation Management
Fire Behavior Branch, Predictive Services
McClellan, CA

with support from:
Wildland Fire
Decision Support System &
Rocky Mtn. Research Station

Note: Projection based on preliminary data
Mapped by: Don Yasuda

For more information about WFDSS:
https://wfdss.usgs.gov/wfdss/wfdss_home.shtml