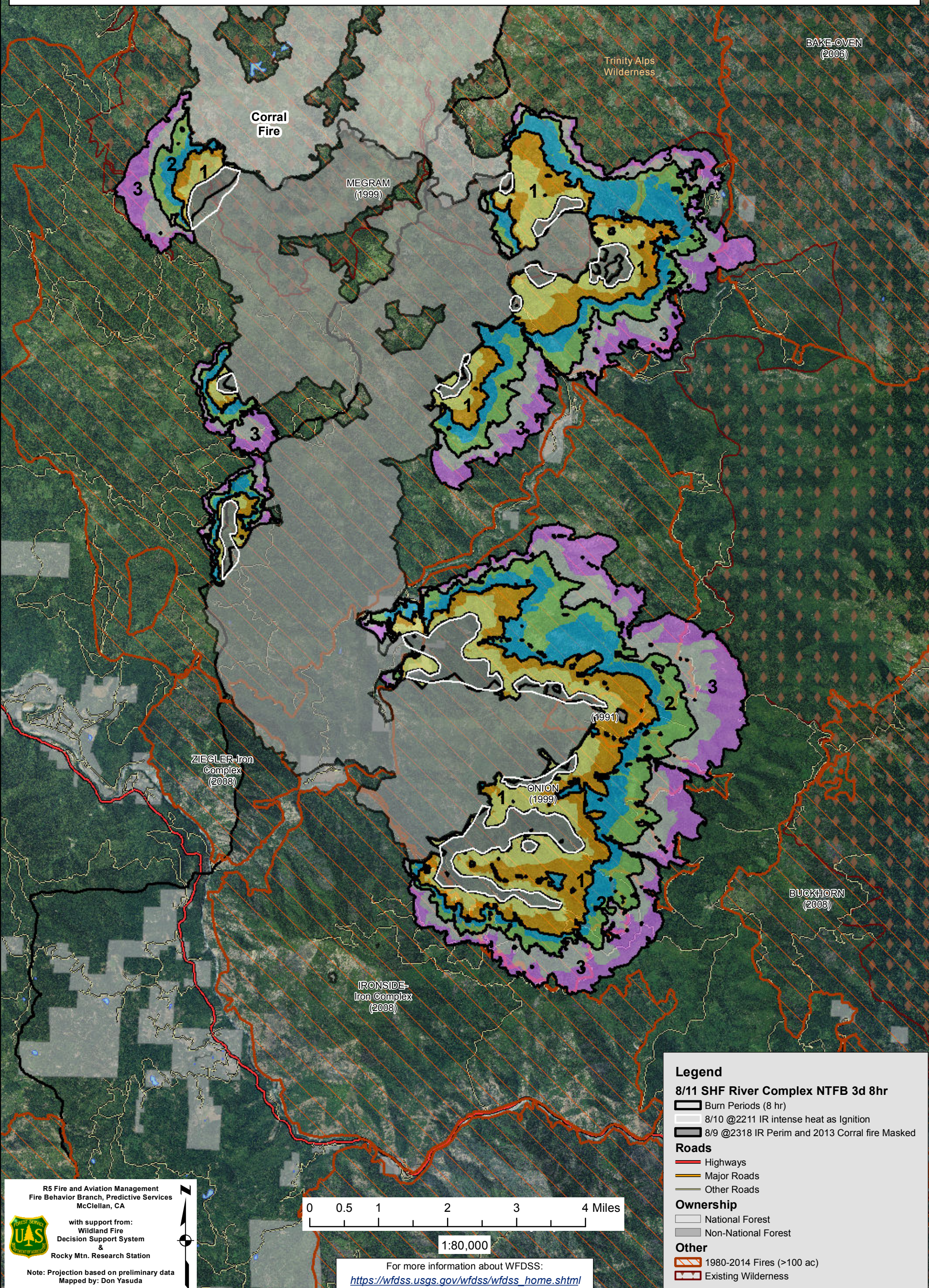


WFDSS - NEAR TERM FIRE BEHAVIOR ANALYSIS: SHF River Complex (2015-CASHF-002066)
08/11 - 3 DAYS - 8hr Burn Periods (1100-1900) - 30m Res
Fuel Moisture & Wx: 40404 - BRUSH MTN (12.1 miles)
File:8.11 to 8.13 3 day Near Term Fire Behavior; Analyst: Larry Hood


BY-NC-ND
Iron
Complex
(2008)

Note: Updated 3 day Near Term fire behavior analysis for 8/11 to 8/13. Masks 8/9 2318 IR perimeters and 2013 Corral fire as non-burnable and uses 8/10 2211 IR intense heat for ignition file to model spread in areas showing recent growth. 8 hour burn periods, 1100-1900 (reduced from previous 12 hours for better alignment with actual spread). Model assumes no suppression action. **May under predict spread due to extreme drought conditions and/or stronger S/SW winds than is reflected in gridded weather forecast used. Colors showing 4 hour time steps.**

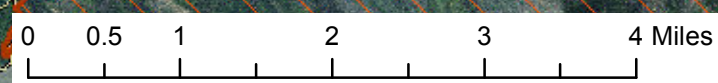


R5 Fire and Aviation Management
Fire Behavior Branch, Predictive Services
McClellan, CA

with support from:
Wildland Fire
Decision Support System &
Rocky Mtn. Research Station



Note: Projection based on preliminary data
Mapped by: Don Yasuda



1:80,000

For more information about WFDSS:
https://wfdss.usgs.gov/wfdss/wfdss_home.shtml

Legend

8/11 SHF River Complex NTFB 3d 8hr

- Burn Periods (8 hr)
- 8/10 @2211 IR intense heat as Ignition
- 8/9 @2318 IR Perim and 2013 Corral fire Masked

Roads

- Highways
- Major Roads
- Other Roads

Ownership

- National Forest
- Non-National Forest

Other

- 1980-2014 Fires (>100 ac)
- Existing Wilderness