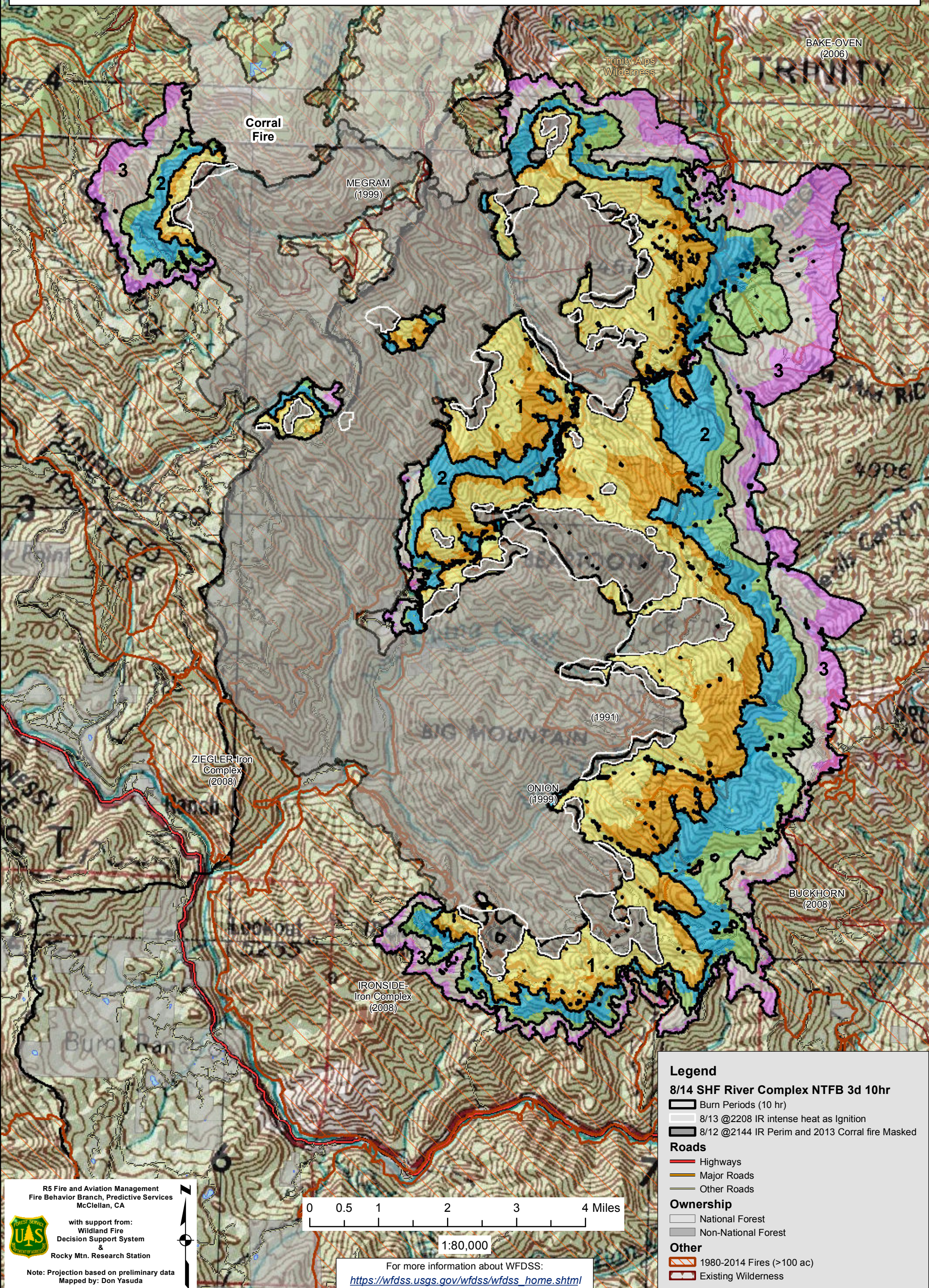


**WFDSS - NEAR TERM FIRE BEHAVIOR ANALYSIS: SHF River Complex (2015-CASHF-002066)**  
08/14 - 3 DAYS - 10hr Burn Periods (1000-2000) - 30m Res  
Fuel Moisture & Wx: 40404 - BRUSH MTN (12.1 miles)  
File:8.14 to 8.16 3 day Near Term Fire Behavior; Analyst: Larry Hood

Y-iron  
plex  
08)

Note: Updated 3 day Near Term fire behavior analysis for 8/14 to 8/16. Masks 8/12 2144 IR perimeters and 2013 Corral fire as non-burnable and uses 8/13 2208 IR intense heat for ignition file to model spread in areas showing recent growth. 10 hour burn periods, 1000-2000 hours. No barrier files used and model assumes no suppression action. **May under predict spread due to extreme drought conditions and/or forecasted warming and drying trend. Colors show 6 hour and then 4 hour time step per day.**



**Legend**

**8/14 SHF River Complex NTFB 3d 10hr**

- Burn Periods (10 hr)
- 8/13 @2208 IR intense heat as Ignition
- 8/12 @2144 IR Perim and 2013 Corral fire Masked

**Roads**

- Highways
- Major Roads
- Other Roads


**Ownership**

- National Forest
- Non-National Forest

**Other**

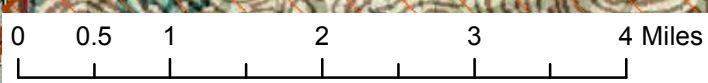
- 1980-2014 Fires (>100 ac)
- Existing Wilderness

R5 Fire and Aviation Management  
Fire Behavior Branch, Predictive Services  
McClellan, CA



with support from:  
Wildland Fire  
Decision Support System  
&  
Rocky Mtn. Research Station

Note: Projection based on preliminary data  
Mapped by: Don Yasuda



1:80,000

For more information about WFDSS:  
[https://wfdss.usgs.gov/wfdss/wfdss\\_home.shtml](https://wfdss.usgs.gov/wfdss/wfdss_home.shtml)