

# Air Operations

Fork Complex

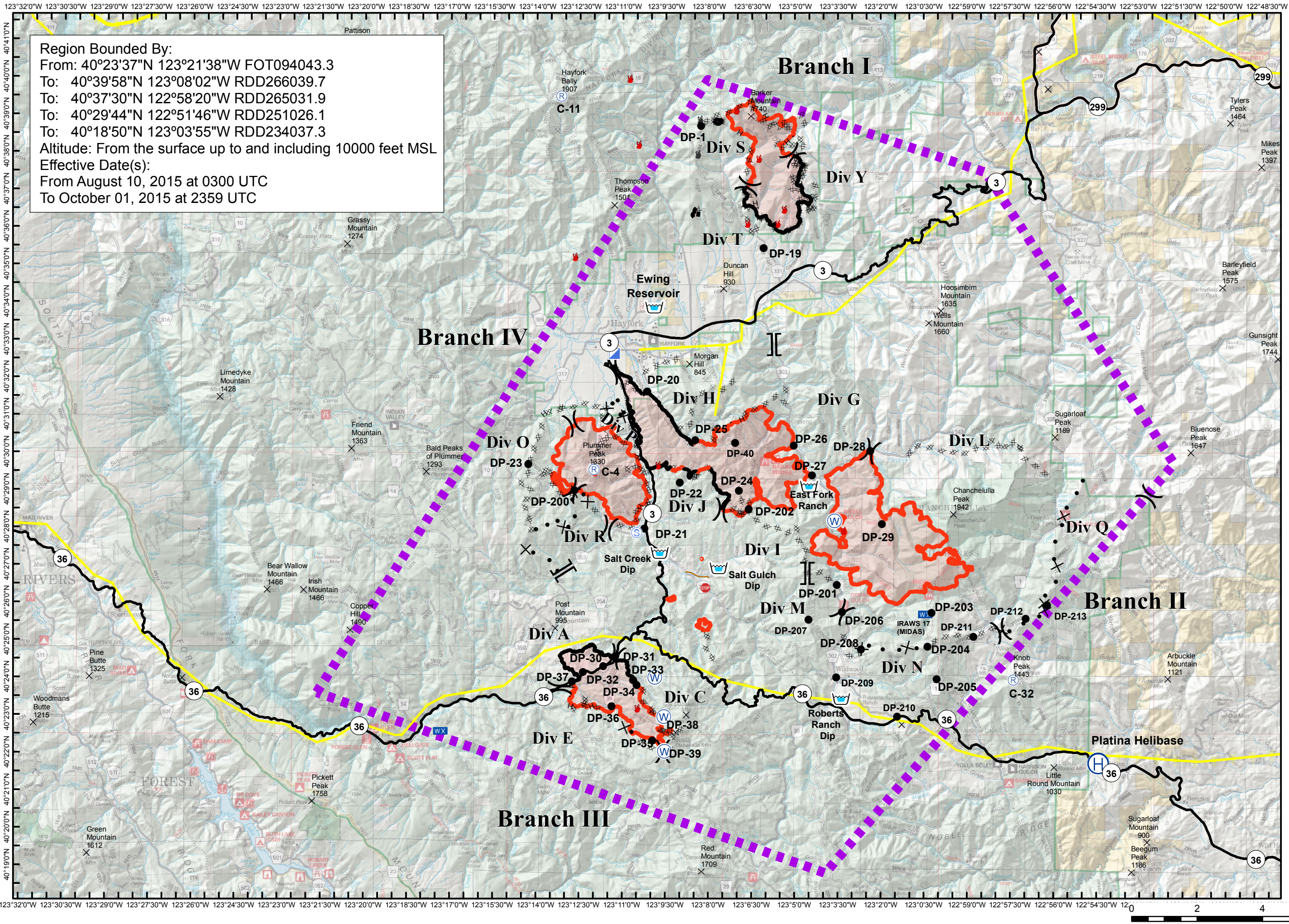
CA-SHF 002067

08/11/2015 0600



Region Bounded By:  
From: 40°23'37"N 123°21'38"W FOT094043.3  
To: 40°39'58"N 123°08'02"W RDD266039.7  
To: 40°37'30"N 122°58'20"W RDD265031.9  
To: 40°29'44"N 122°51'46"W RDD251026.1  
To: 40°18'50"N 123°03'55"W RDD234037.3  
Altitude: From the surface up to and including 10000 feet MSL  
Effective Date(s):  
From August 10, 2015 at 0300 UTC  
To October 01, 2015 at 2359 UTC

- Drop Point
- 🔥 Fire Location
- 🔥 Fire Location - Out
- 📍 Incident Command Post
- 🌤 Mobile Weather Unit
- 📡 Repeater
- 📍 Staging Area
- 🏠 Dip Site
- 🚁 Helibase
- || Branch Break
- ) Division Break
- Completed Line
- XXX Dozer Line
- H - H - Handline
- ✕ Proposed Dozer Line
- 🔴 Uncontrolled Fire Edge
- 🟡 Transmission Lines
- ✕ Summits
- 🔲 TFR



0 2 4 6 8 Miles



C-11	40° 39.521'	-123° 13.148'
C-32	40° 23.971'	-122° 57.379'
C-4	40° 29.575'	-123° 11.998'
DP-1	40° 38.724'	-123° 8.277'
DP-19	40° 35.476'	-123° 6.084'
DP-20	40° 31.652'	-123° 10.135'
DP-200	40° 29.016'	-123° 12.674'
DP-201	40° 26.506'	-123° 3.521'
DP-202	40° 28.523'	-123° 6.592'
DP-203	40° 25.757'	-123° 0.219'
DP-204	40° 24.862'	-123° 0.362'
DP-205	40° 23.992'	-123° 0.043'
DP-206	40° 25.783'	-123° 3.345'
DP-207	40° 25.571'	-123° 4.505'
DP-208	40° 24.793'	-123° 2.673'
DP-209	40° 24.041'	-123° 3.536'
DP-21	40° 27.999'	-123° 10.232'
DP-210	40° 22.993'	-123° 1.418'
DP-211	40° 25.121'	-122° 58.767'
DP-212	40° 25.601'	-122° 56.941'
DP-213	40° 25.968'	-122° 56.195'
DP-22	40° 29.227'	-123° 9.002'
DP-23	40° 29.710'	-123° 14.278'
DP-24	40° 29.007'	-123° 6.939'
DP-25	40° 30.354'	-123° 8.466'
DP-26	40° 30.210'	-123° 5.026'
DP-27	40° 29.430'	-123° 4.390'
DP-28	40° 30.070'	-123° 2.357'
DP-29	40° 28.124'	-123° 1.956'
DP-30	40° 24.338'	-123° 11.655'
DP-31	40° 24.594'	-123° 11.237'
DP-32	40° 24.178'	-123° 12.357'
DP-33	40° 23.966'	-123° 10.615'
DP-34	40° 23.830'	-123° 10.491'
DP-35	40° 22.423'	-123° 9.952'
DP-36	40° 23.259'	-123° 11.360'
DP-37	40° 23.922'	-123° 12.747'
DP-38	40° 22.904'	-123° 9.386'
DP-39	40° 22.070'	-123° 9.581'
DP-40	40° 30.283'	-123° 7.075'
East Fork Ranch	40° 29.135'	-123° 4.495'
Platina Helibase	40° 21.744'	-122° 54.426'
Roberts Ranch Dip	40° 23.235'	-123° 3.725'
Salt Creek Dip	40° 27.354'	-123° 9.692'
Salt Gulch Dip	40° 26.945'	-123° 7.634'
Staging Area	40° 28.003'	-123° 10.106'
Staging Area	40° 27.939'	-123° 11.130'
Water Source	40° 22.996'	-123° 9.538'
Water Source	40° 24.036'	-123° 9.853'
Water Source	40° 28.222'	-123° 3.604'