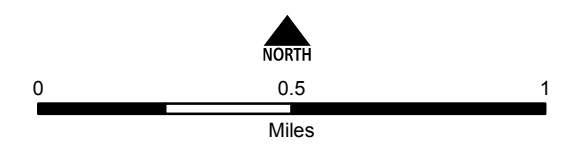
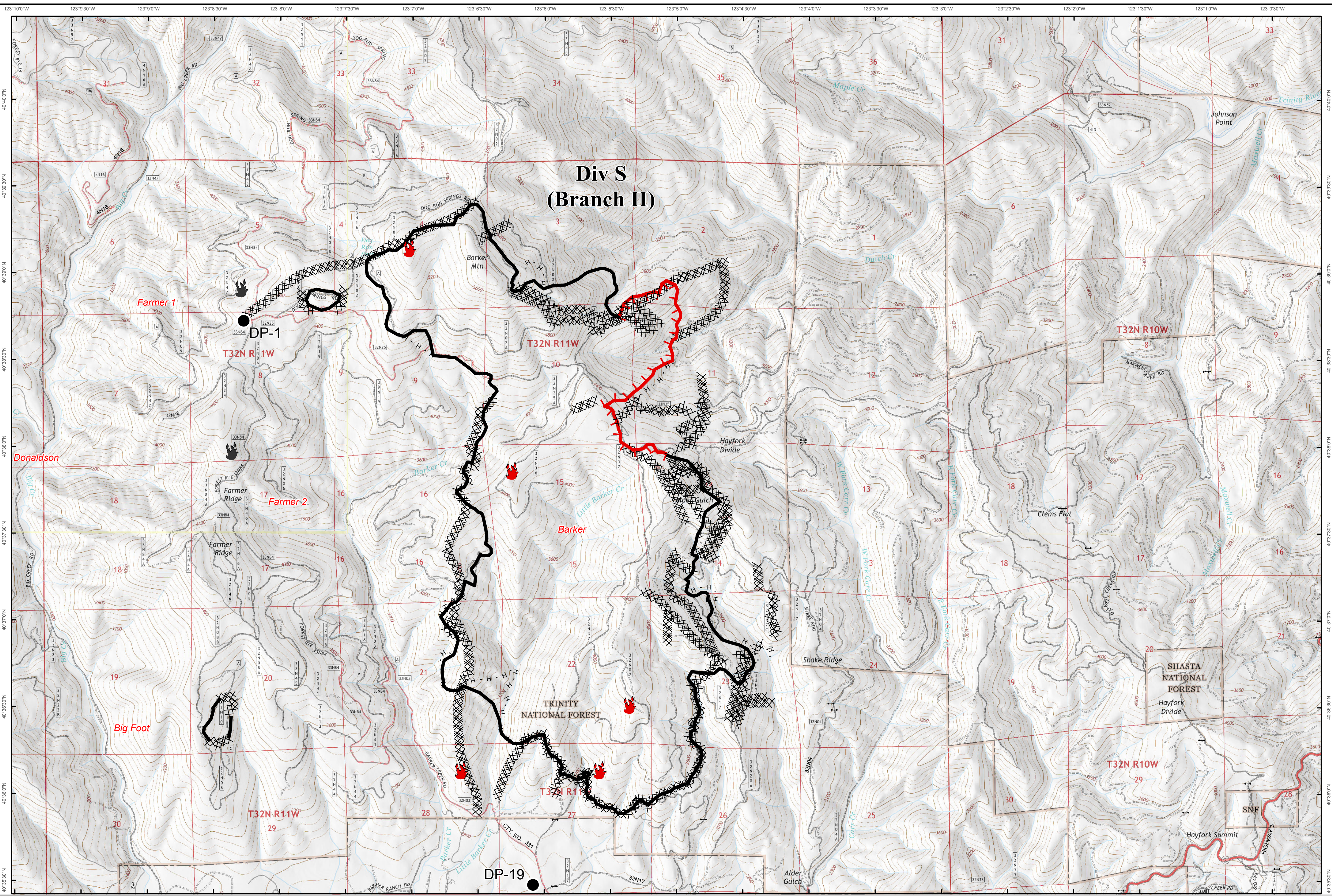


**Operations-Branch II: Div S**  
**Fork Complex**  
**CA-SHF 002067**  
**08/16/2015 0600**



- Drop Point
- 🔥 Fire Location
- 🔥 Fire Location - Out
- Completed Line
- XXXX Dozer Line
- H Handline
- Uncontrolled Fire Edge
- ☀️ PG&E Gas Pipeline
- ↔️ SPI Gates
- Secondary
- Highway
- Primary
- Jeep Trail

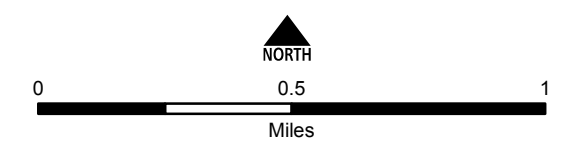


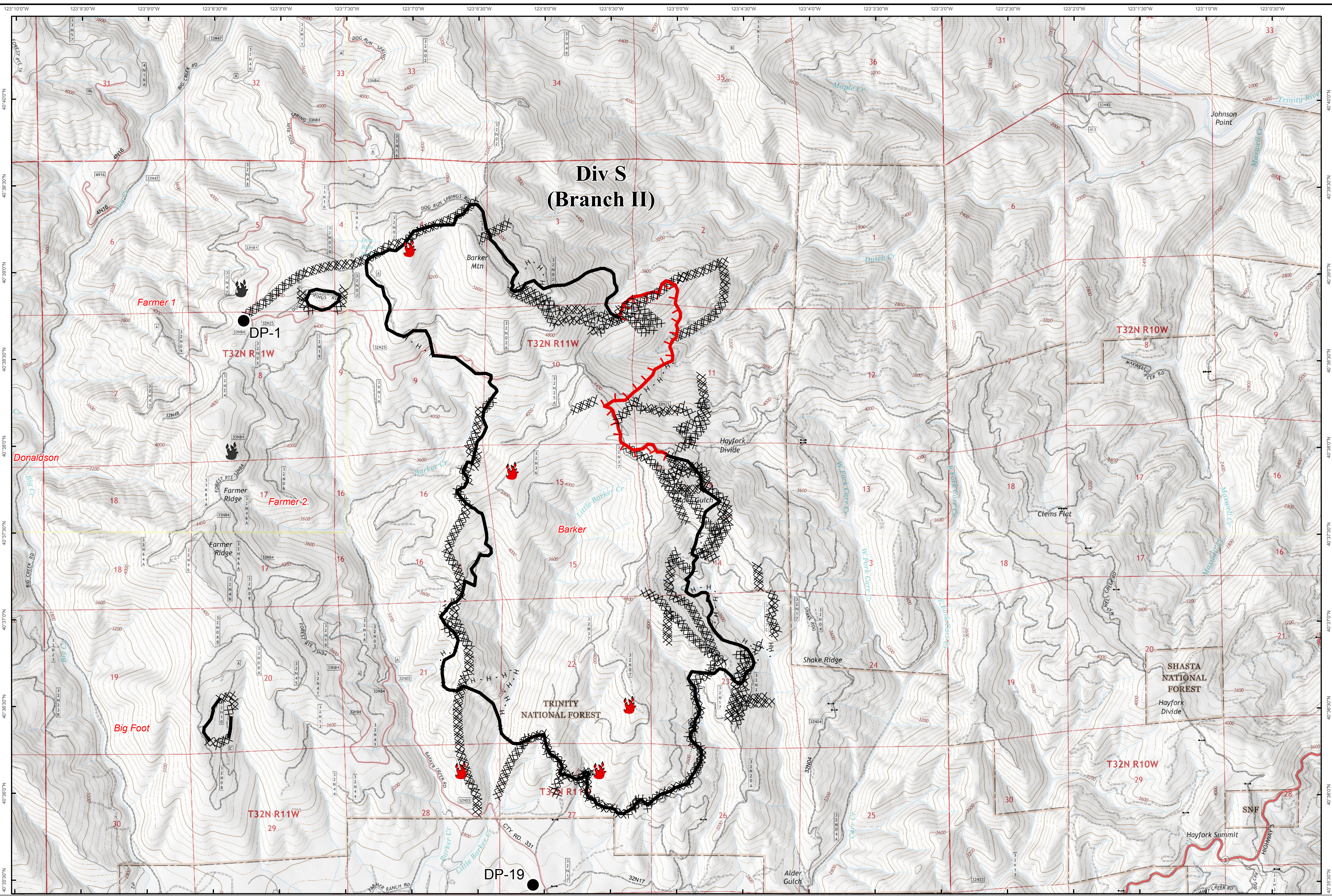


**Operations-Branch II: Div S**  
**Fork Complex**  
**CA-SHF 002067**  
**08/16/2015 0600**



- Drop Point
- 🔥 Fire Location
- 👤 Fire Location - Out
- Completed Line
- XXXX Dozer Line
- H Handline
- 🔴 Uncontrolled Fire Edge
- ☀️ PG&E Gas Pipeline
- ↔️ SPI Gates
- Road Type: Highway, Primary, Secondary, Jeep Trail

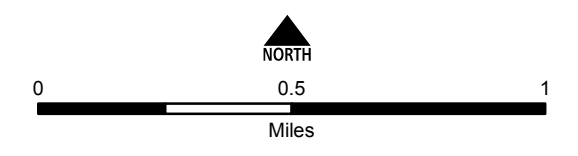


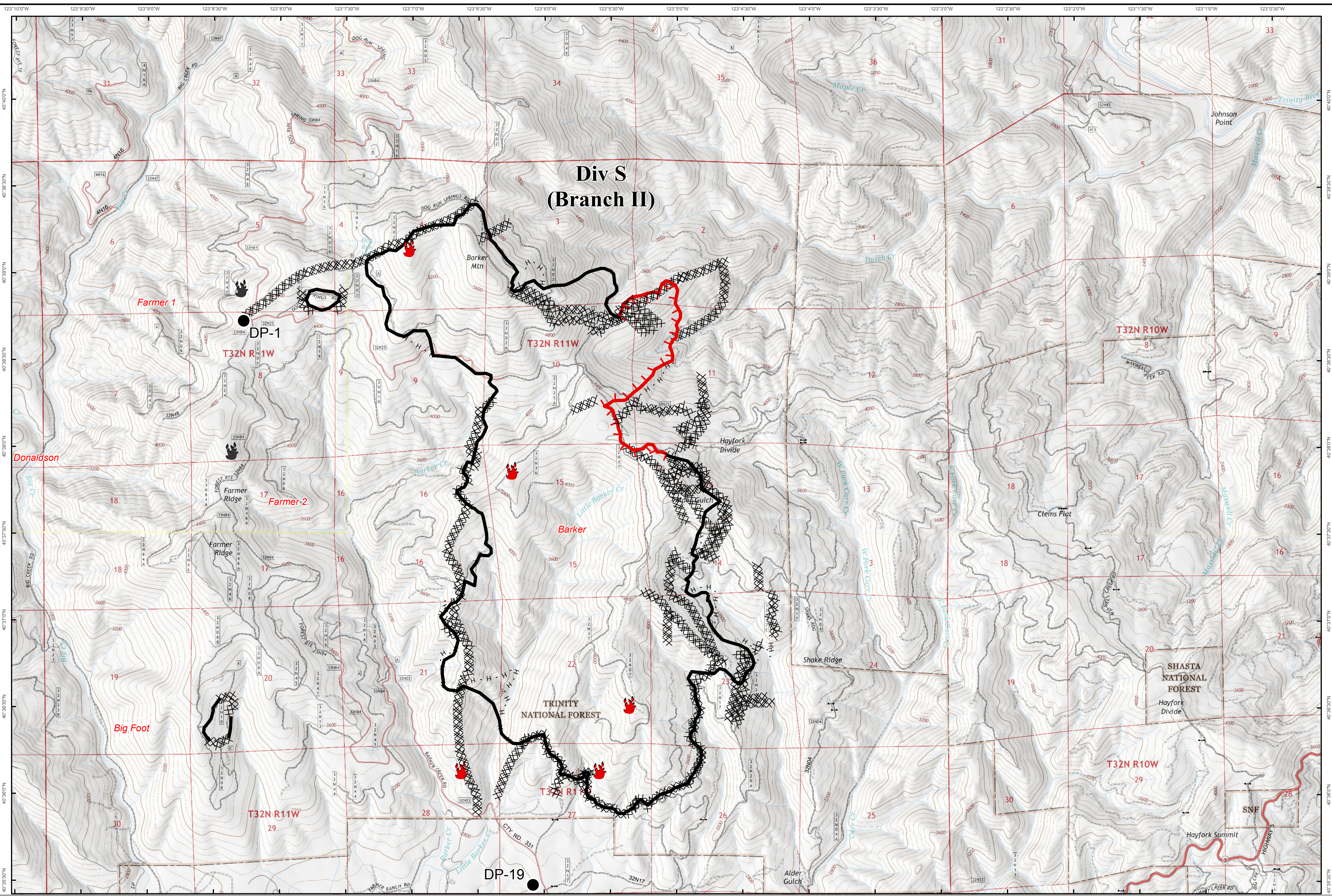


**Operations-Branch II: Div S**  
**Fork Complex**  
**CA-SHF 002067**  
**08/16/2015 0600**



- Drop Point
- 🔥 Fire Location
- 🔥 Fire Location - Out
- Completed Line
- XXXX Dozer Line
- H Handline
- 🔴 Uncontrolled Fire Edge
- ☀️ PG&E Gas Pipeline
- ↔️ SPI Gates
- Road Type: Highway, Primary, Secondary, Jeep Trail





**Operations-Branch II: Div S**  
**Fork Complex**  
**CA-SHF 002067**  
**08/16/2015 0600**



- Drop Point
- 🔥 Fire Location
- 👤 Fire Location - Out
- Completed Line
- XXXX Dozer Line
- H Handline
- 🔴 Uncontrolled Fire Edge
- ☀️ PG&E Gas Pipeline
- ↔️ SPI Gates
- Secondary
- Highway
- Primary
- Jeep Trail

