

Fork Complex

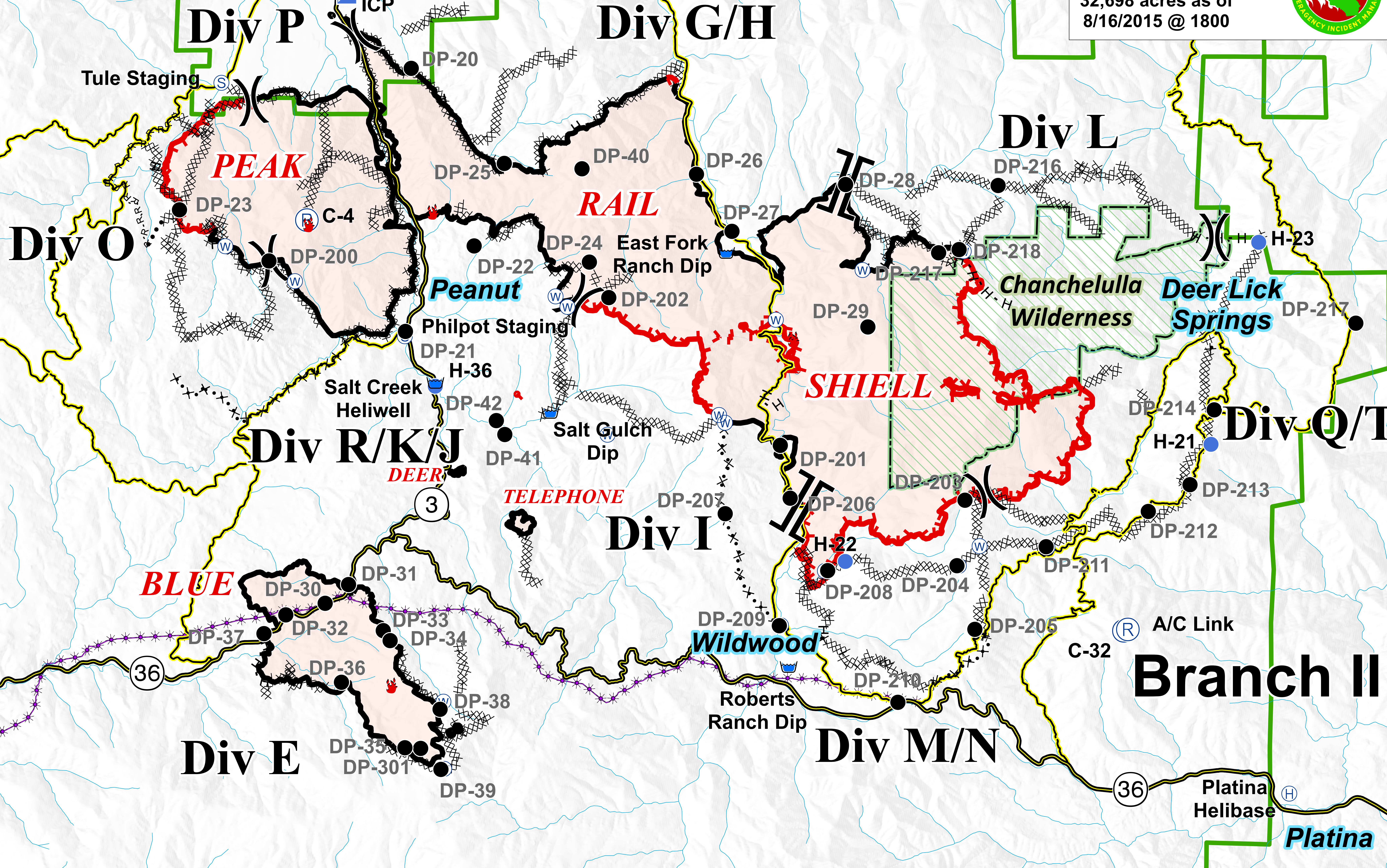
CA-SHF-002067

08/17/2015

32,698 acres as of
8/16/2015 @ 1800



Branch IV



Branch Break	Uncontrolled Fire Edge	Dozer Line	Incident Command Post	Repeater	Water Source	National Forest Boundary
Contained Fire Edge	Proposed Dozer Line	Drop Point	Helibase	Fire Location	Wilderness	PG&E Gas Pipeline
Division Break	R-R Road as Completed Line	Staging Area	Helispot	Fire Location - Out		
			Dip Site			

