

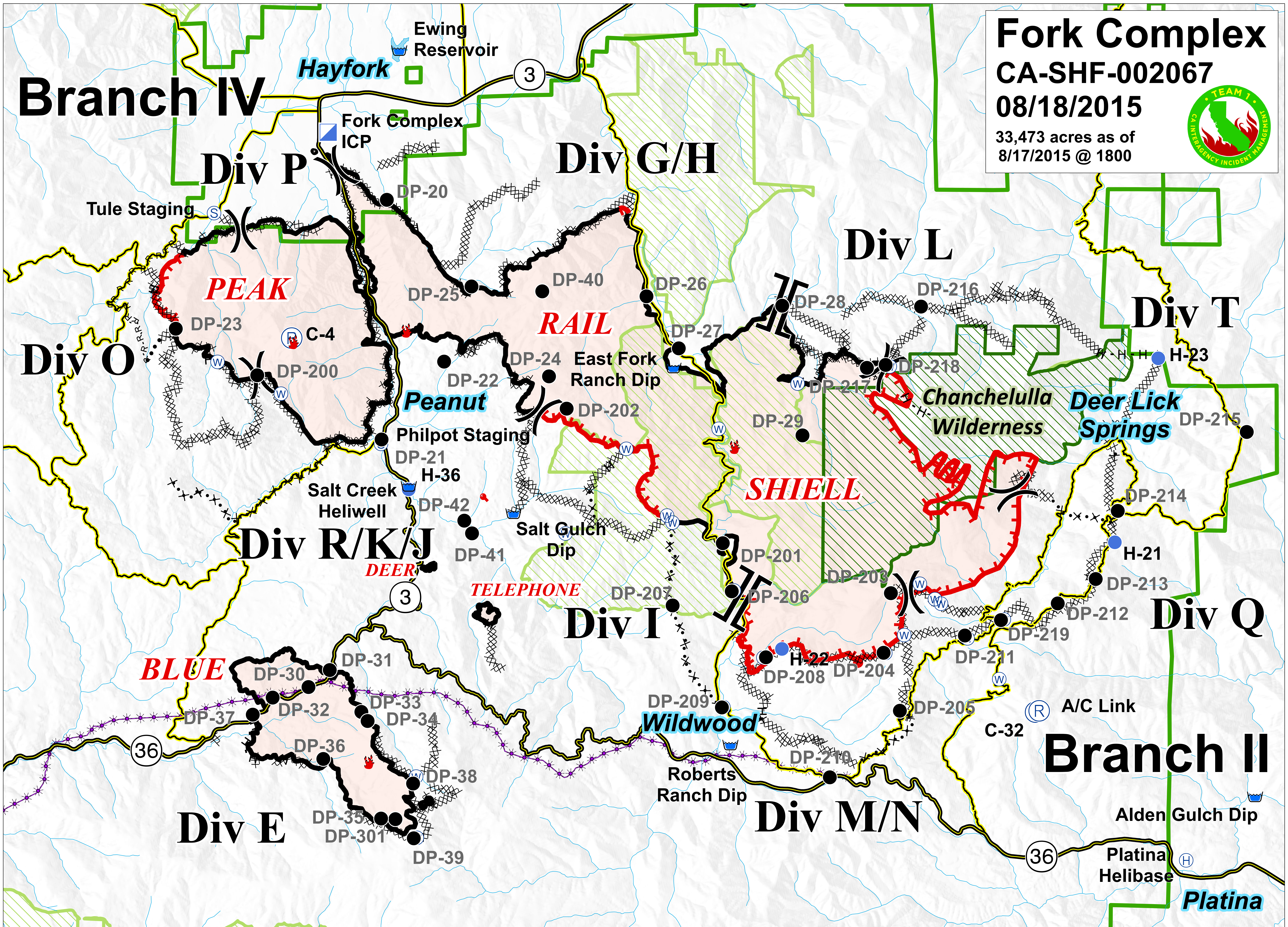
Branch IV

Fork Complex

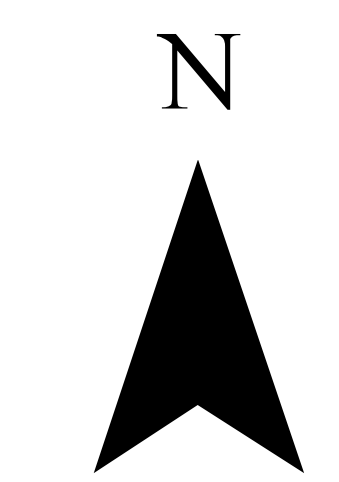
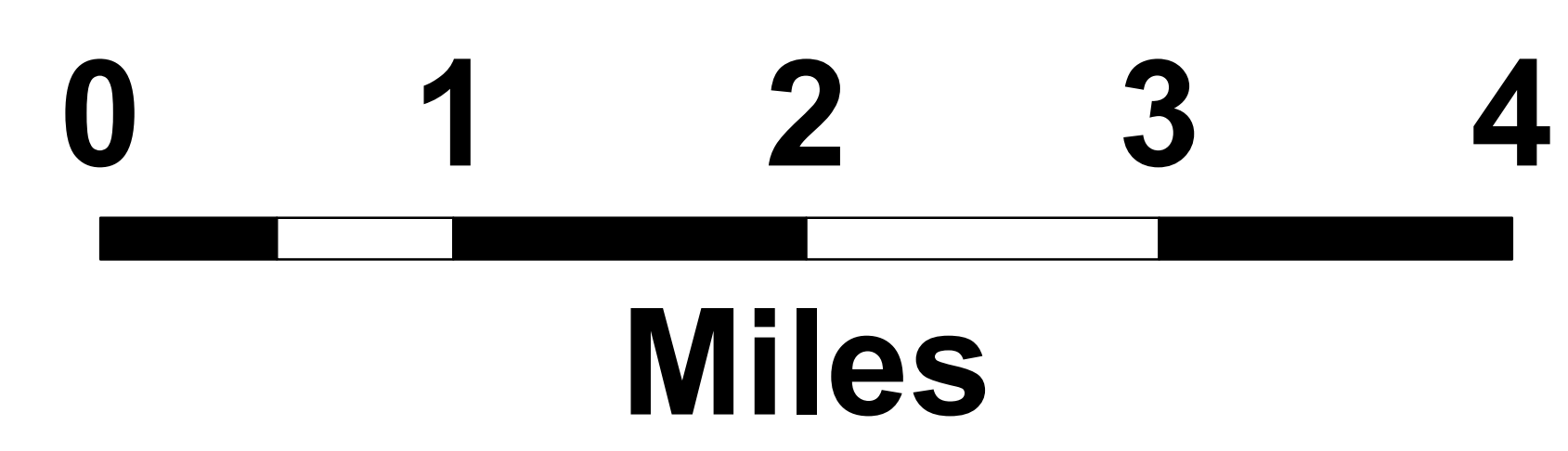
CA-SHF-002067

08/18/2015

33,473 acres as of 8/17/2015 @ 1800

- | | | | | | | |
|----------------------------|------------------------|------------------------|-----------------------|----------|---------------------|---------------------------|
| Branch Break | Uncontrolled Fire Edge | Dozer Line | Incident Command Post | Repeater | Water Source | National Forest Boundary |
| Division Break | Contained Fire Edge | Proposed Dozer Line | Drop Point | Helibase | Fire Location | Wilderness |
| R-R Road as Completed Line | Handline | Planned Secondary Line | Staging Area | Helispot | Fire Location - Out | Inventoried Roadless Area |
| | | | | Dip Site | PG&E Gas Pipeline | |



Operations Mobile Map