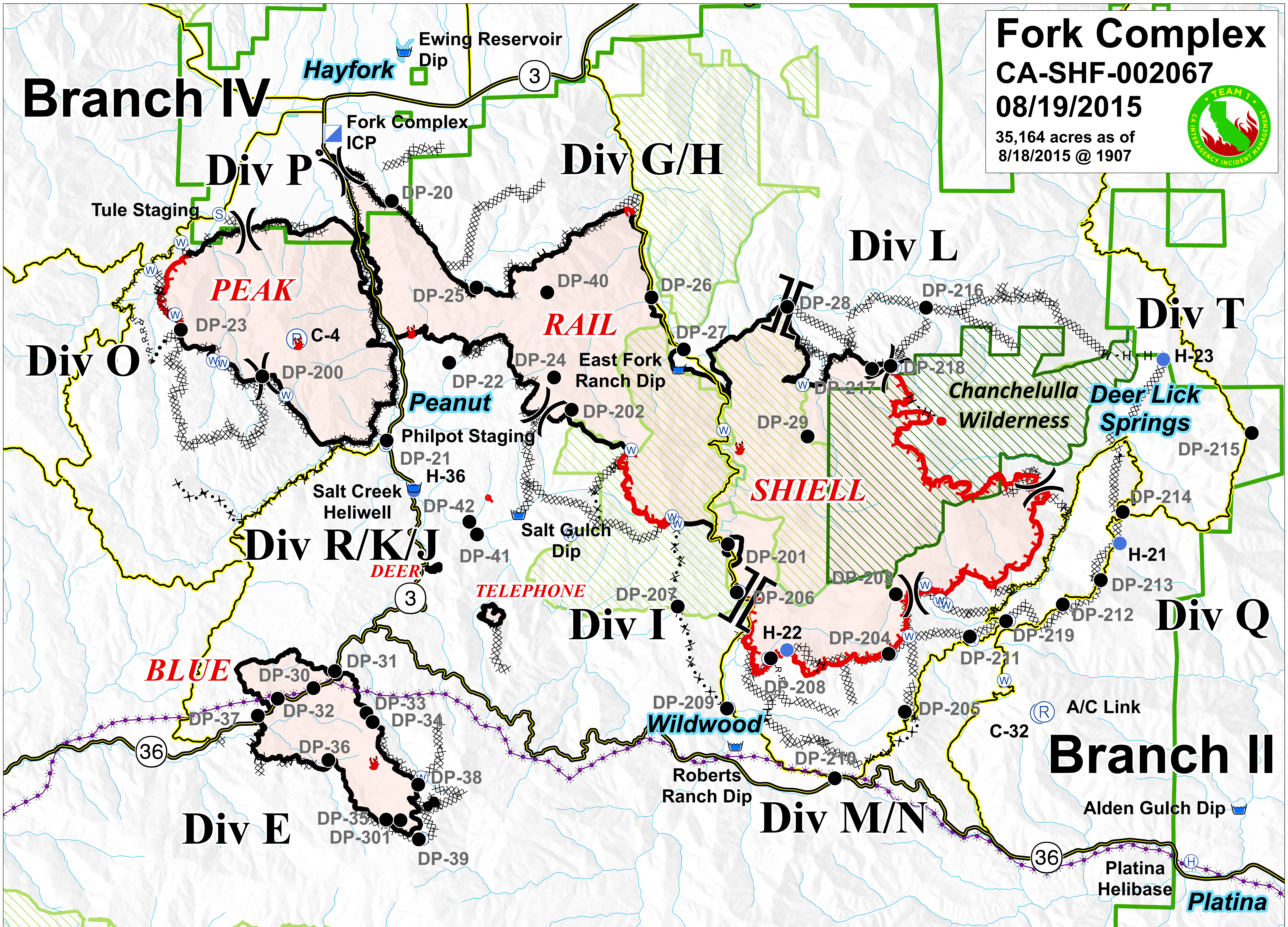
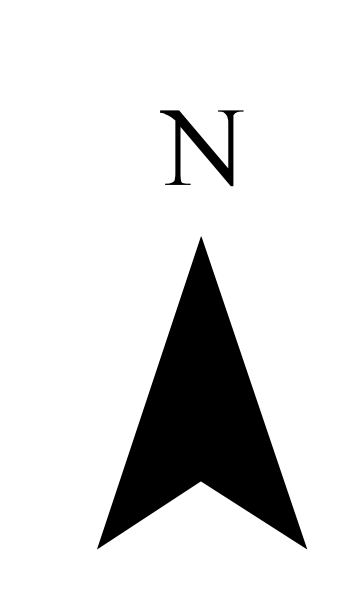
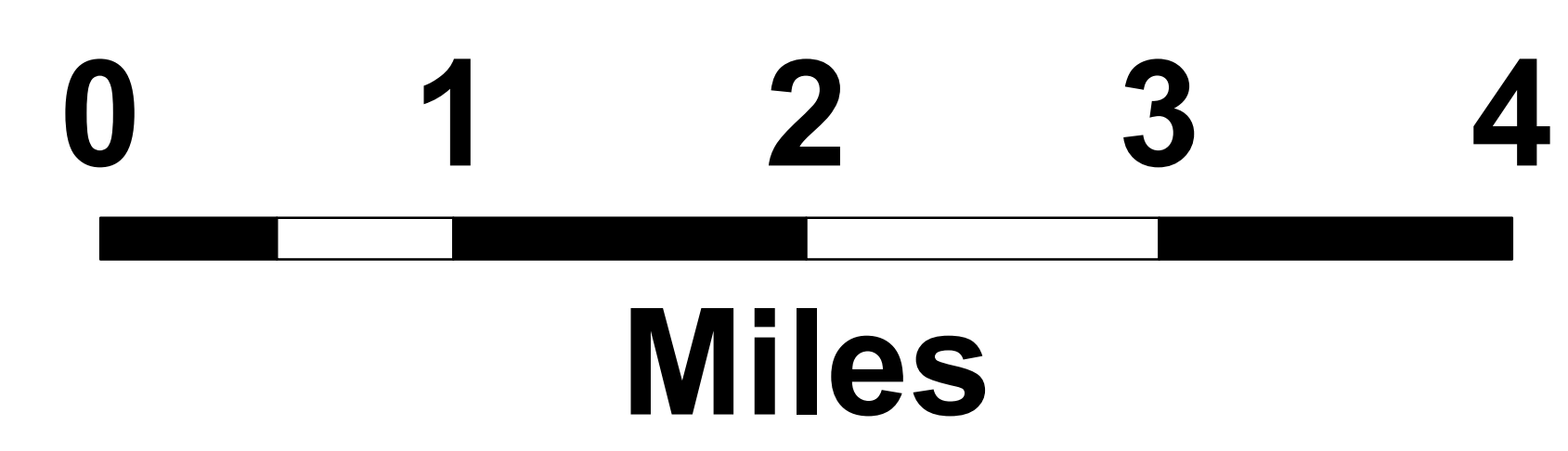


Branch IV

Fork Complex
CA-SHF-002067
08/19/2015
 35,164 acres as of
 8/18/2015 @ 1907



- | | | | | | | |
|----------------|----------------------------|------------------------|-----------------------|----------|---------------------|---------------------------|
| Branch Break | Uncontrolled Fire Edge | Dozer Line | Incident Command Post | Repeater | Water Source | National Forest Boundary |
| Division Break | Contained Fire Edge | Proposed Dozer Line | Drop Point | Helibase | Fire Location | Wilderness |
| | H-H Handline | Planned Secondary Line | Staging Area | Helispot | Fire Location - Out | Inventoried Roadless Area |
| | R-R Road as Completed Line | | | Dip Site | PG&E Gas Pipeline | |



Operations Mobile Map