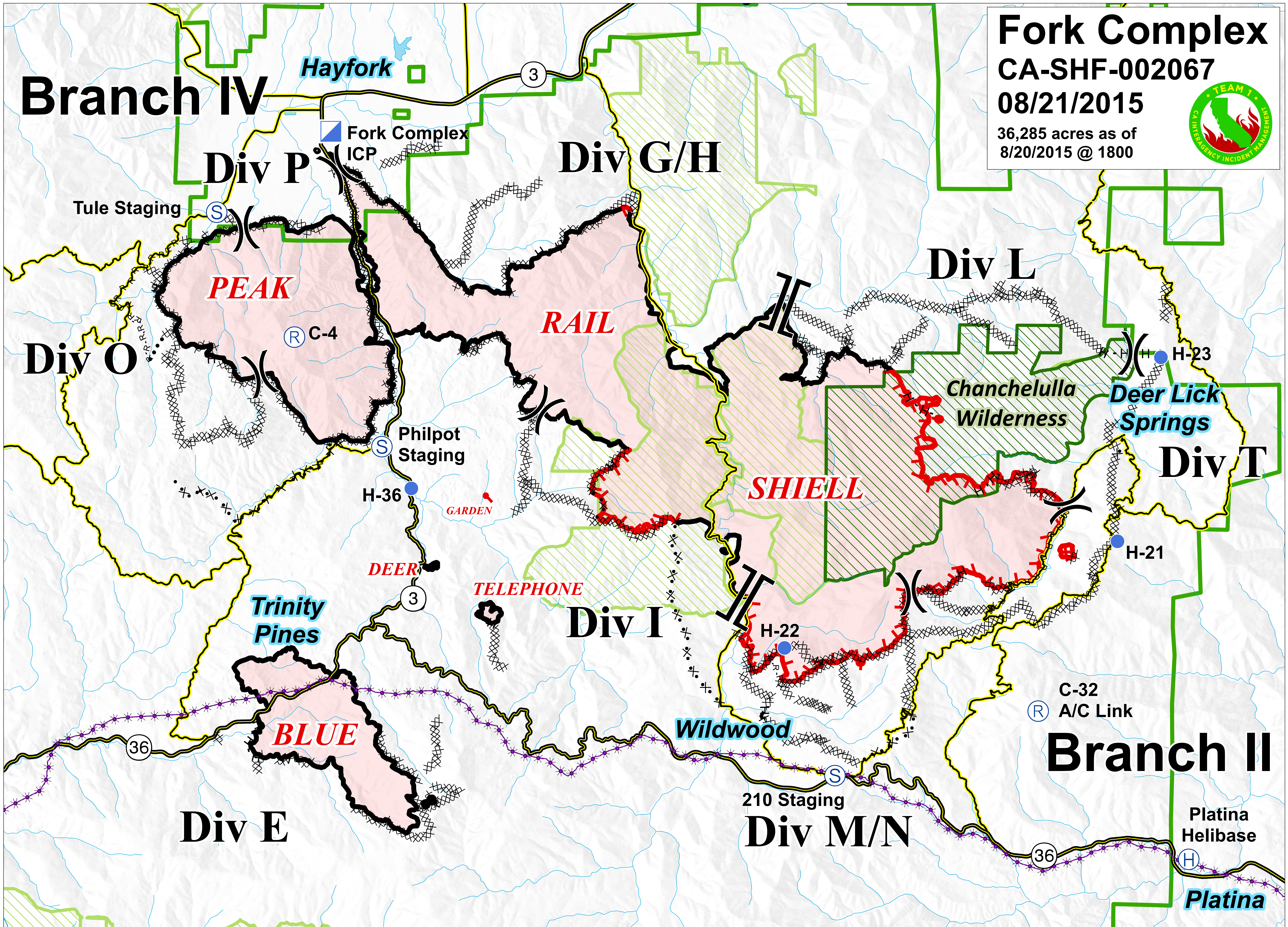



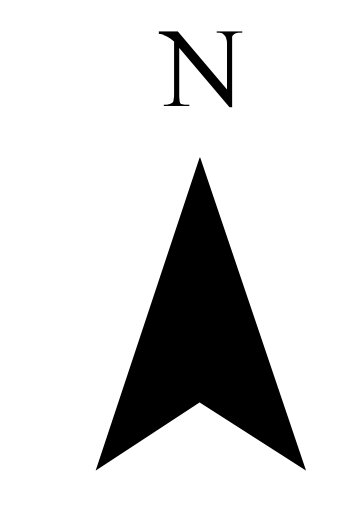
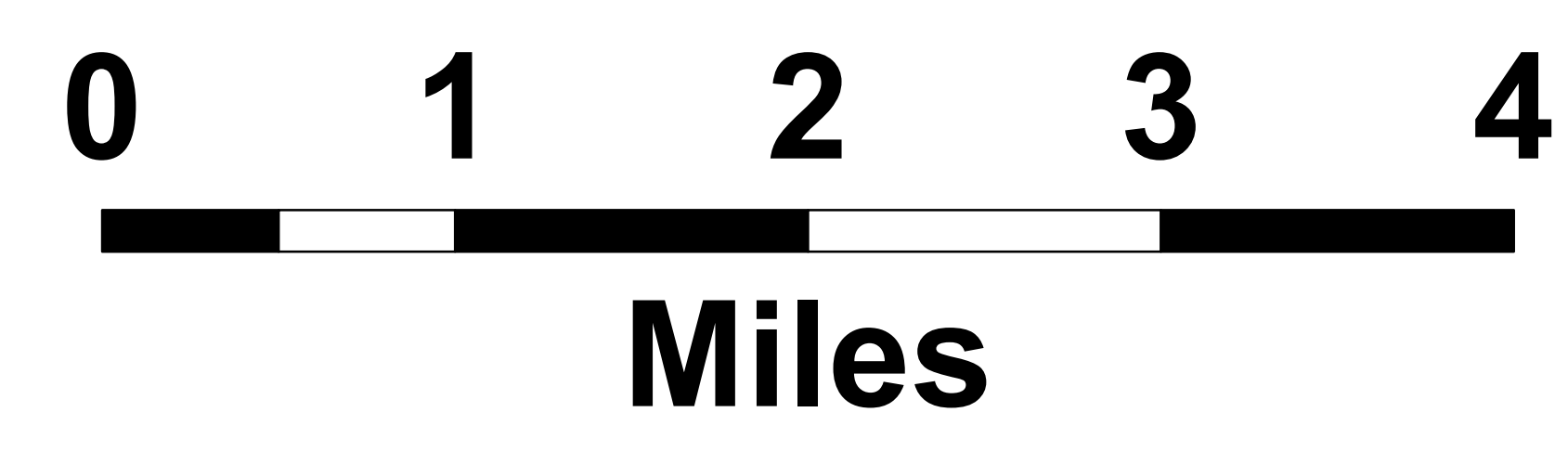
Branch IV

Fork Complex

CA-SHF-002067
08/21/2015
36,285 acres as of
8/20/2015 @ 1800



- | | | | | | |
|----------------|-----------------------------|------------------------|-----------------------|-----------|---------------------------|
| Branch Break | Uncontrolled Fire Edge | Dozer Line | Incident Command Post | Helibase | National Forest Boundary |
| Division Break | Contained Fire Edge | Proposed Dozer Line | Staging Area | Helispot | Wilderness |
| | H - H Handline | Planned Line | Repeater | Spot Fire | Inventoried Roadless Area |
| | R-R- Road as Completed Line | Planned Secondary Line | | | PG&E Gas Pipeline |



Operations Mobile Map