

Operations  
Mobile Map



**Fork Complex**  
**CA-SHF-002067**  
**IAP Map**  
**08/23/15 Day Shift**



**36,494 acres as of**  
**8/22 @ 1800**

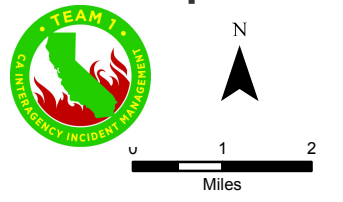
- Branch Break
- Division Break
- Incident Command Post
- Drop Point
- Staging Area
- Repeater
- Helibase
- Helispot
- Dip Site
- Water Source
- Restricted Water Source
- Mobile Weather Unit
- Fire Location
- Fire Location - Out
- Uncontrolled Fire Edge
- Contained Fire Edge
- Dozer Line
- Handline
- Road as Completed Line
- Planned Line
- Planned Secondary Line
- Proposed Dozer Line
- Proposed Handline
- PG&E Gas Pipeline



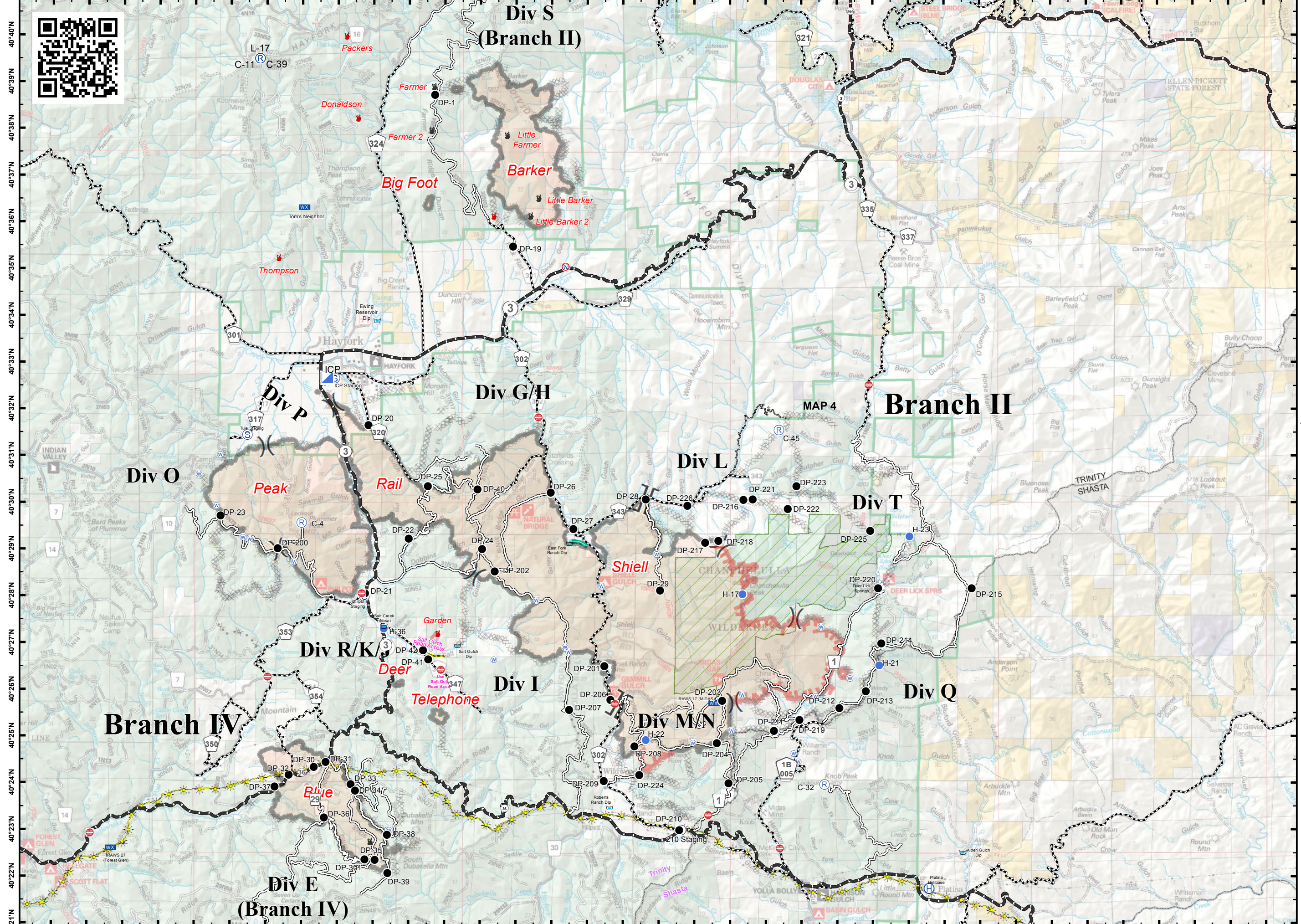
0 0.5 1 2 3 Miles

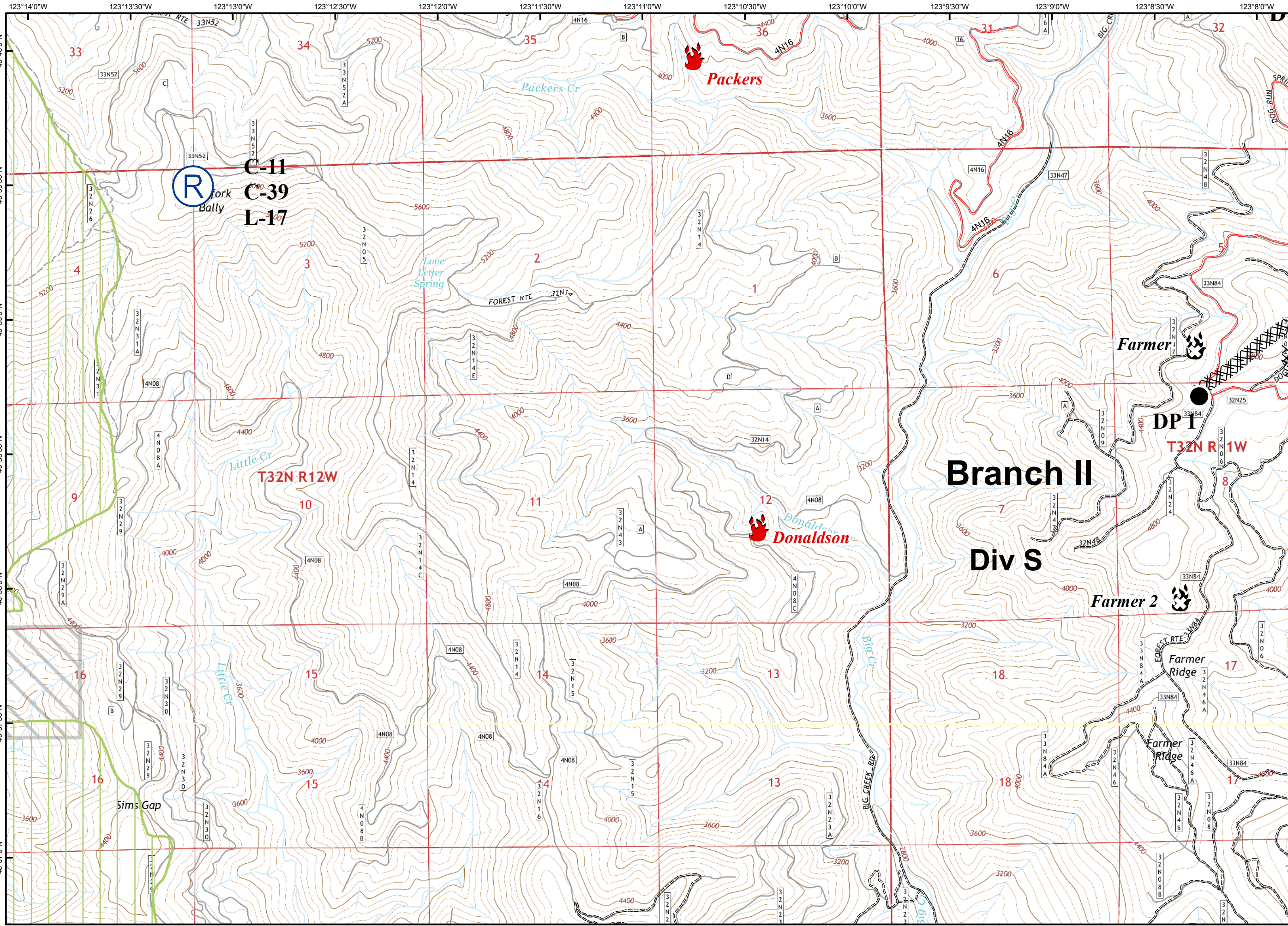


# Fork Complex CA-SHF-002067 Transportation Map



- Major Highways
- County Roads
- Travel Routes
- Branch Break
- Division Break
- Uncontrolled Fire Edge
- Completed Line
- Dozer Line
- H - H Handline
- R - R Road as Completed Line
- Planned Line
- Planned Secondary Line
- Proposed Dozer Line
- H • Proposed Handline
- Incident Command Post
- Drop Point
- Staging Area
- Repeater
- Helibase
- Helispot
- Dip Site
- Water Source
- Restricted Water Source
- Mobile Weather Station
- Road Closure
- Fire Location
- Fire Location- Out

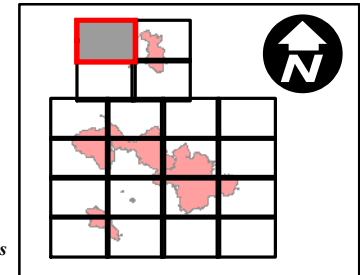
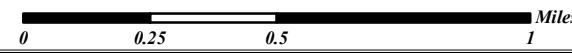


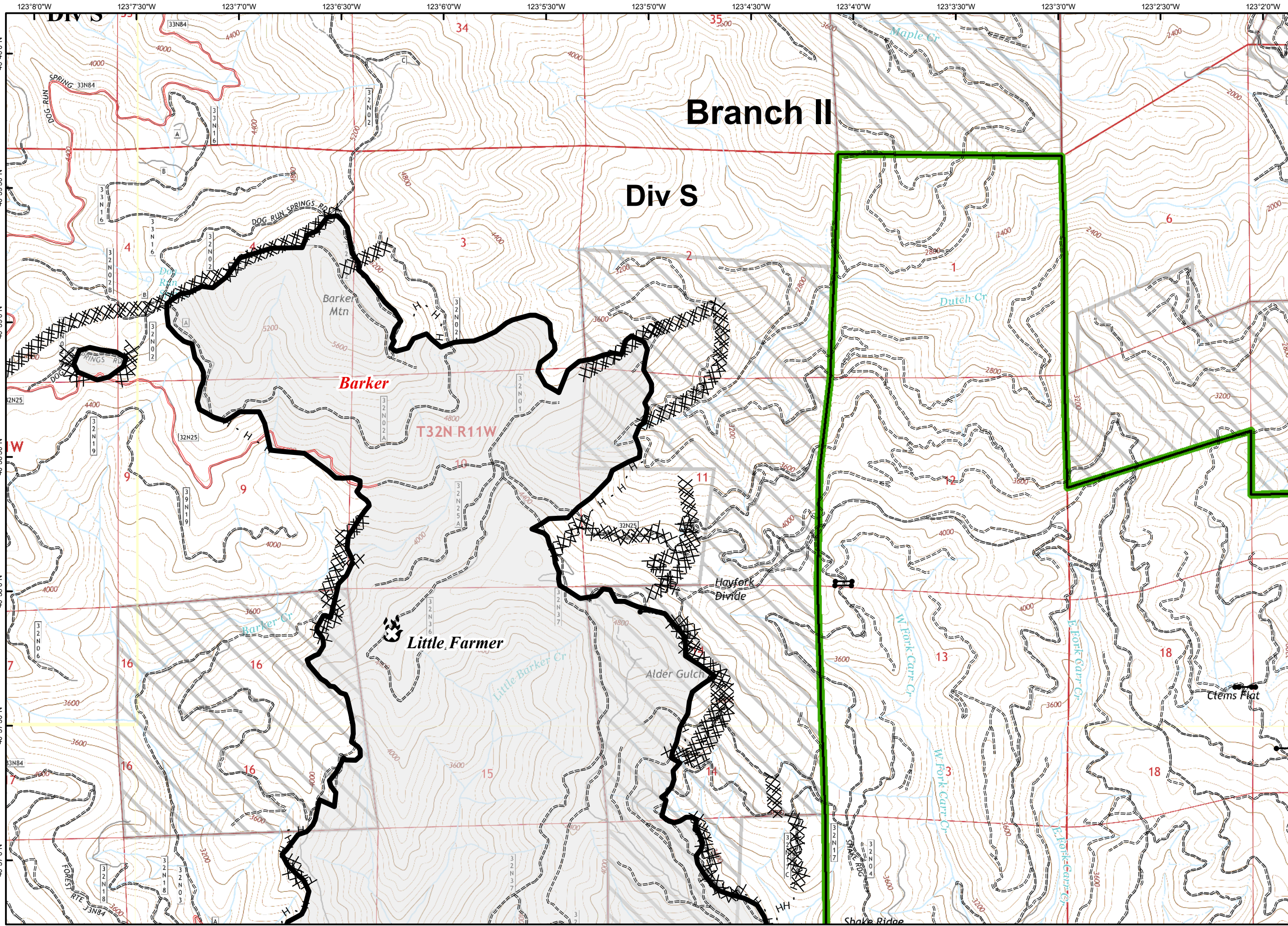


- Branch Break
- Division Break
- Uncontrolled Fire Edge
- Contained Fire Edge
- Dozer Line
- Handline
- Road as Completed Line
- Planned Line
- Planned Secondary Line
- Proposed Dozer Line
- Proposed Handline
- Incident Command Post
- Drop Point
- Staging Area
- Repeater
- Helibase
- Helispot
- Dip Site
- Water Source
- Restricted Water Source
- Pump
- Mobile Weather Unit
- Road Closure
- Fire Location
- Fire Location - Out
- SPI Gate
- Private Land within Forest Boundary
- National Forest Boundary
- Wilderness
- Inventoried Roadless Area
- PG&E Gas Pipeline

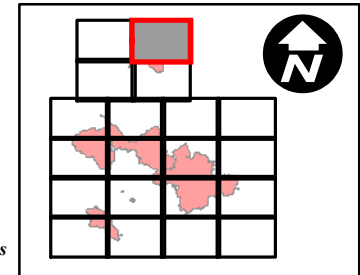
**Branch II**

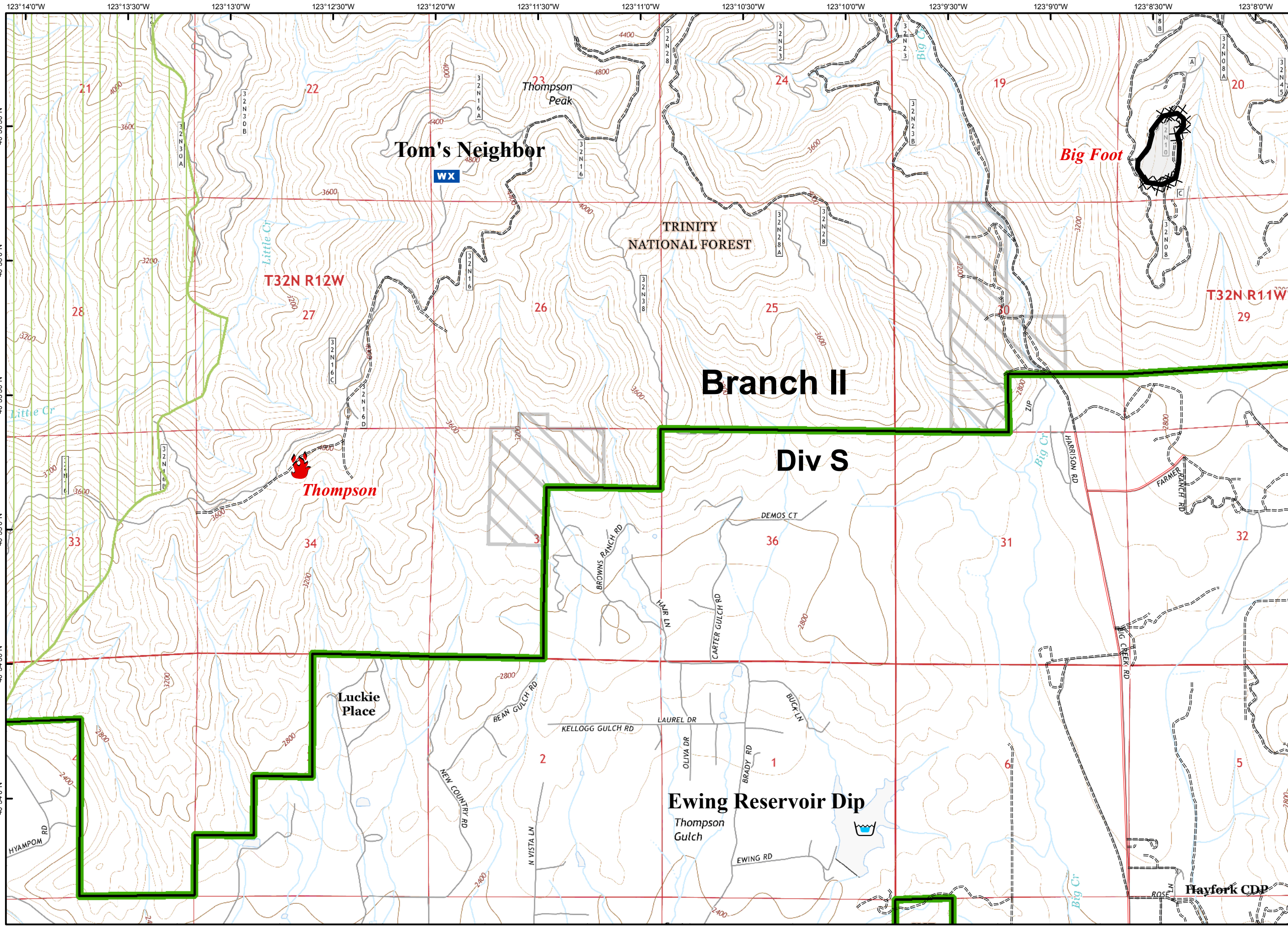
**Div S**



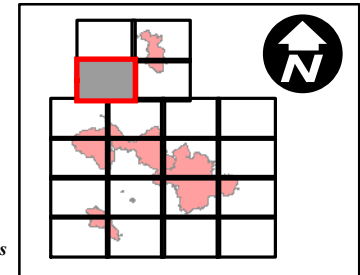


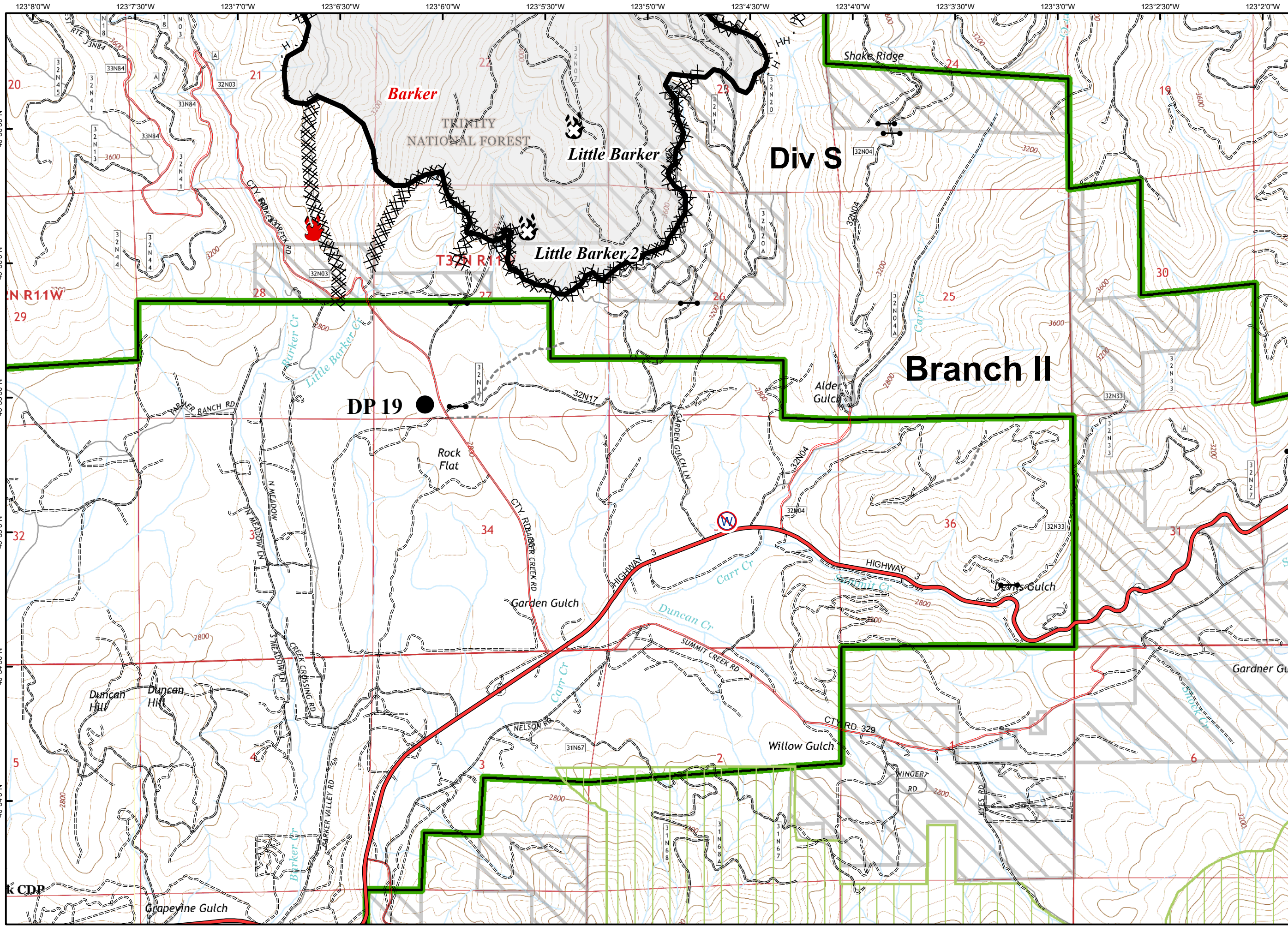
- Branch Break
- Division Break
- Uncontrolled Fire Edge
- Contained Fire Edge
- Dozer Line
- Handline
- Road as Completed Line
- Planned Line
- Planned Secondary Line
- Proposed Dozer Line
- Proposed Handline
- Incident Command Post
- Drop Point
- Staging Area
- Repeater
- Helibase
- Helispot
- Dip Site
- Water Source
- Restricted Water Source
- Pump
- Mobile Weather Unit
- Road Closure
- Fire Location
- Fire Location - Out
- SPI Gate
- Private Land within Forest Boundary
- National Forest Boundary
- Wilderness
- Inventoried Roadless Area
- PG&E Gas Pipeline



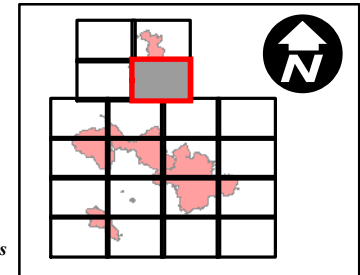


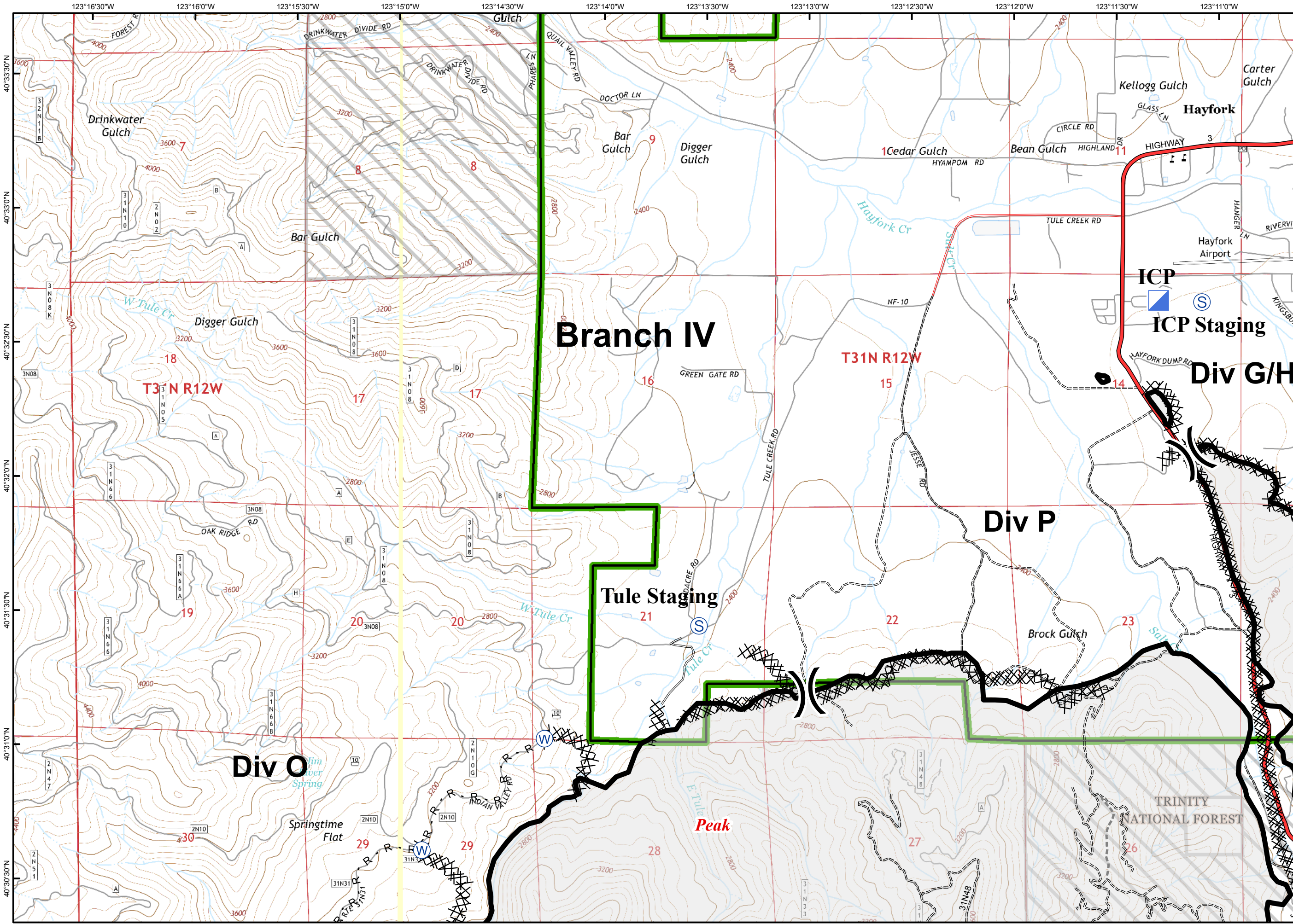
- Branch Break
- Division Break
- Uncontrolled Fire Edge
- Contained Fire Edge
- Dozer Line
- Handline
- Road as Completed Line
- Planned Line
- Planned Secondary Line
- Proposed Dozer Line
- Proposed Handline
- Incident Command Post
- Drop Point
- Staging Area
- Repeater
- Helibase
- Helispot
- Dip Site
- Water Source
- Restricted Water Source
- Pump
- Mobile Weather Unit
- Road Closure
- Fire Location
- Fire Location - Out
- SPI Gate
- Private Land within Forest Boundary
- National Forest Boundary
- Wilderness
- Inventoried Roadless Area
- PG&E Gas Pipeline



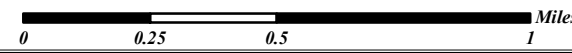
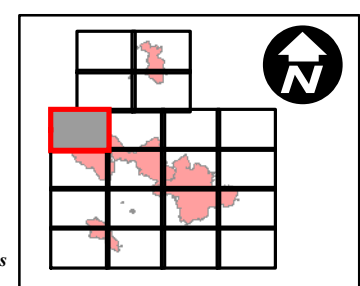


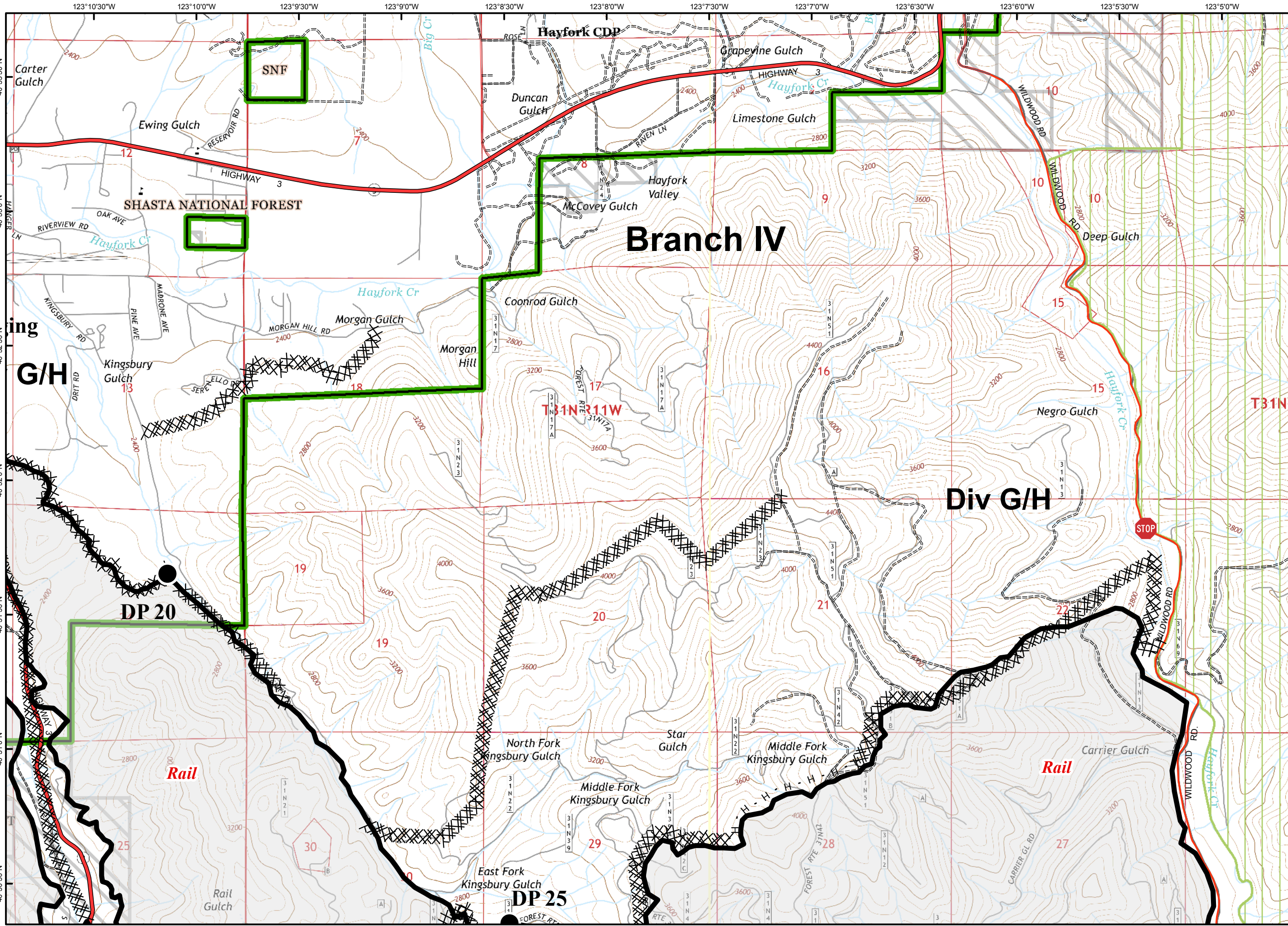
- Branch Break
- Division Break
- Uncontrolled Fire Edge
- Contained Fire Edge
- Dozer Line
- Handline
- Road as Completed Line
- Planned Line
- Planned Secondary Line
- Proposed Dozer Line
- Proposed Handline
- Incident Command Post
- Drop Point
- Staging Area
- Repeater
- Helibase
- Helispot
- Dip Site
- Water Source
- Restricted Water Source
- Pump
- Mobile Weather Unit
- Road Closure
- Fire Location
- Fire Location - Out
- SPI Gate
- Private Land within Forest Boundary
- National Forest Boundary
- Wilderness
- Inventoried Roadless Area
- PG&E Gas Pipeline



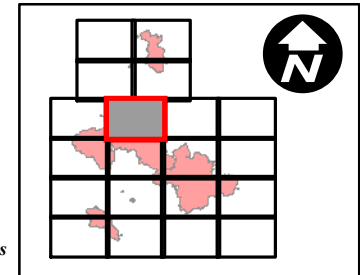


- Branch Break
- Division Break
- Uncontrolled Fire Edge
- Contained Fire Edge
- Dozer Line
- Handline
- Road as Completed Line
- Planned Line
- Planned Secondary Line
- Proposed Dozer Line
- Proposed Handline
- Incident Command Post
- Drop Point
- Staging Area
- Repeater
- Helibase
- Helispot
- Dip Site
- Water Source
- Restricted Water Source
- Pump
- Mobile Weather Unit
- Road Closure
- Fire Location
- Fire Location - Out
- SPI Gate
- Private Land within Forest Boundary
- National Forest Boundary
- Wilderness
- Inventoried Roadless Area
- PG&E Gas Pipeline

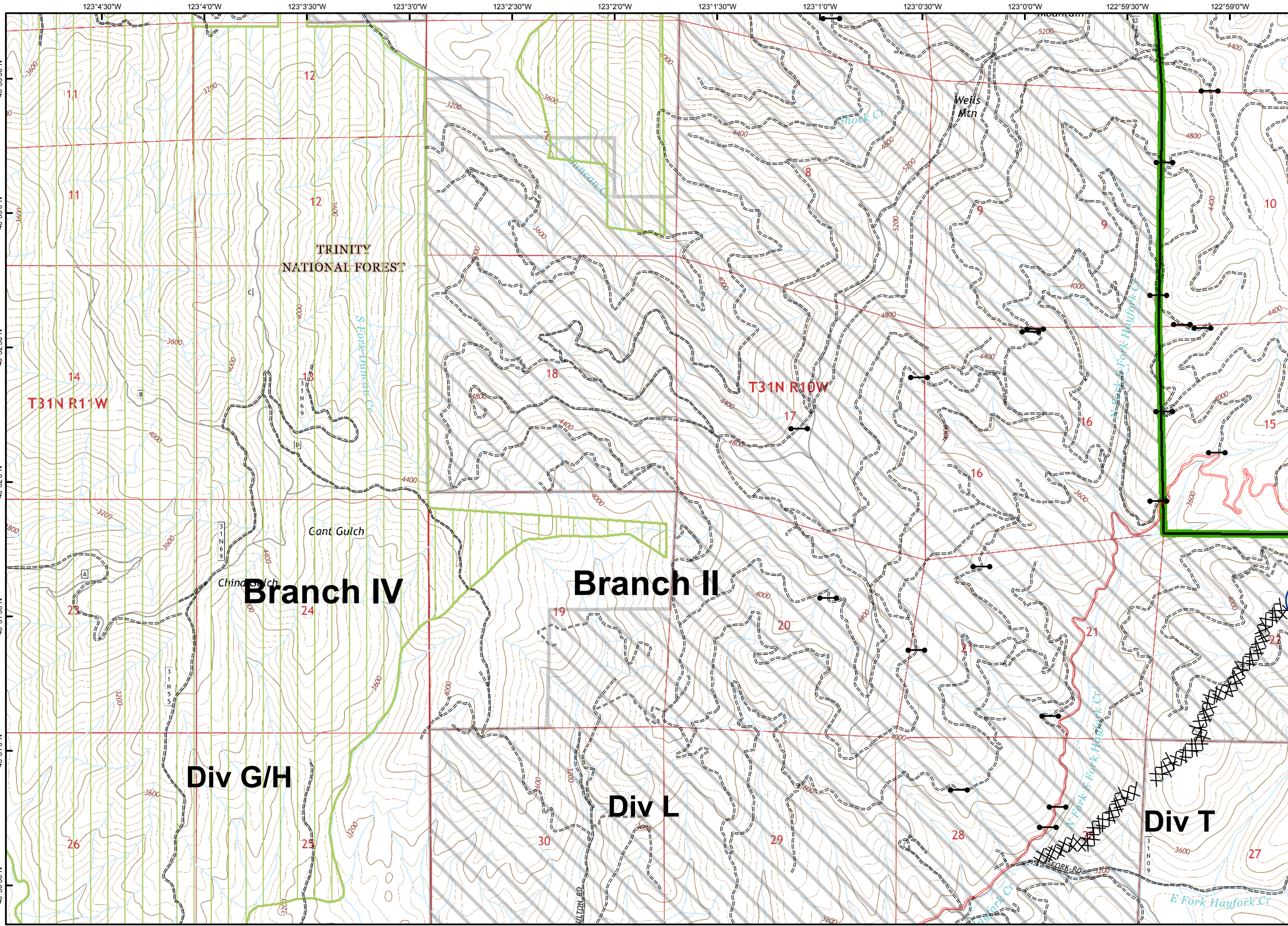




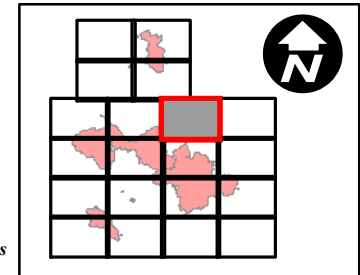
- Branch Break
- Division Break
- Uncontrolled Fire Edge
- Contained Fire Edge
- Dozer Line
- Handline
- Road as Completed Line
- Planned Line
- Planned Secondary Line
- Proposed Dozer Line
- Proposed Handline
- Incident Command Post
- Drop Point
- Staging Area
- Repeater
- Helibase
- Helispot
- Dip Site
- Water Source
- Restricted Water Source
- Pump
- Mobile Weather Unit
- Road Closure
- Fire Location
- Fire Location - Out
- SPI Gate
- Private Land within Forest Boundary
- National Forest Boundary
- Wilderness
- Inventoried Roadless Area
- PG&E Gas Pipeline





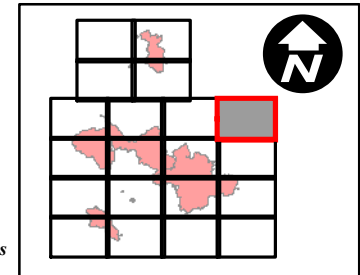
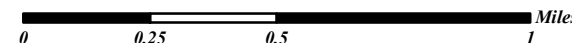
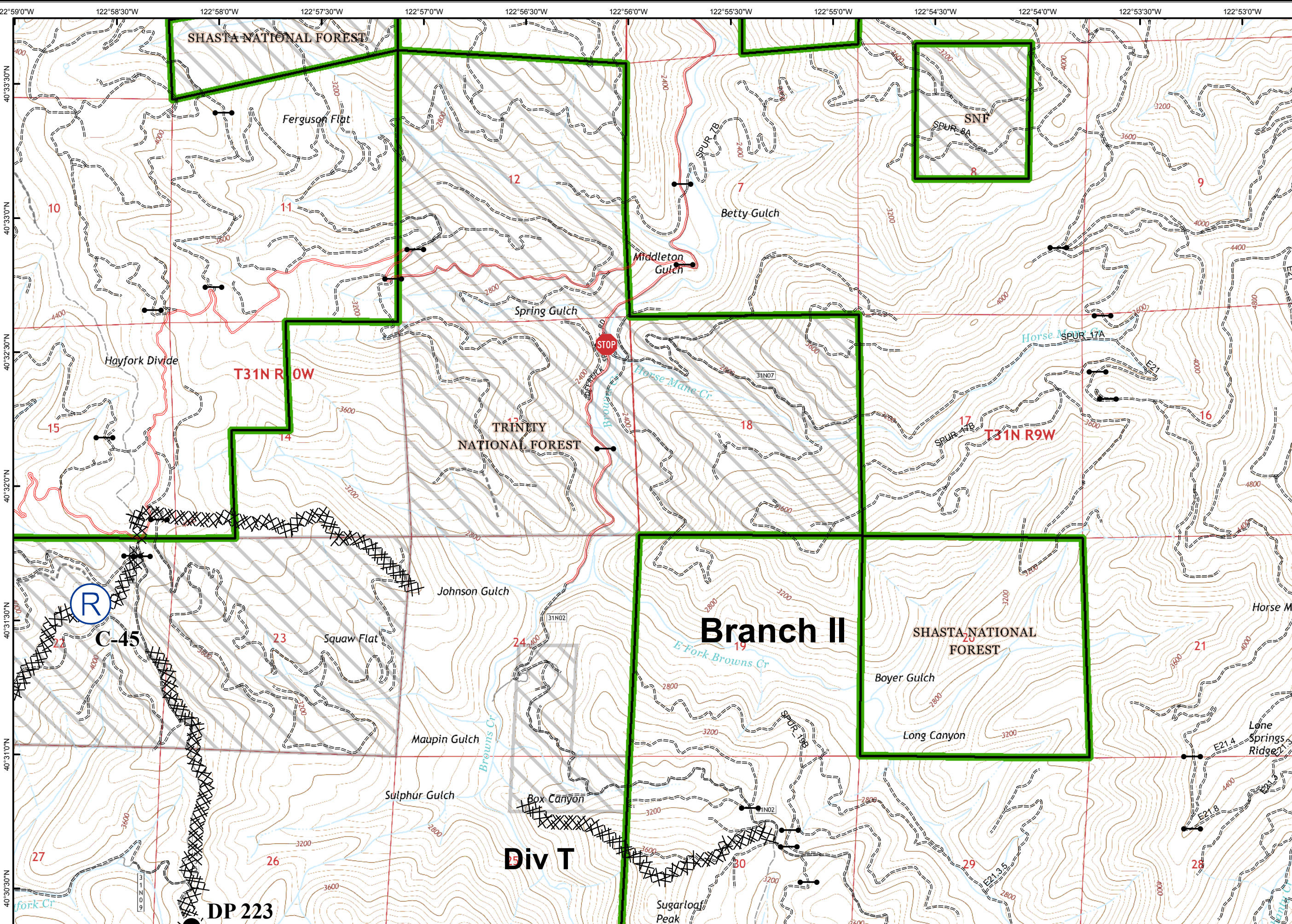


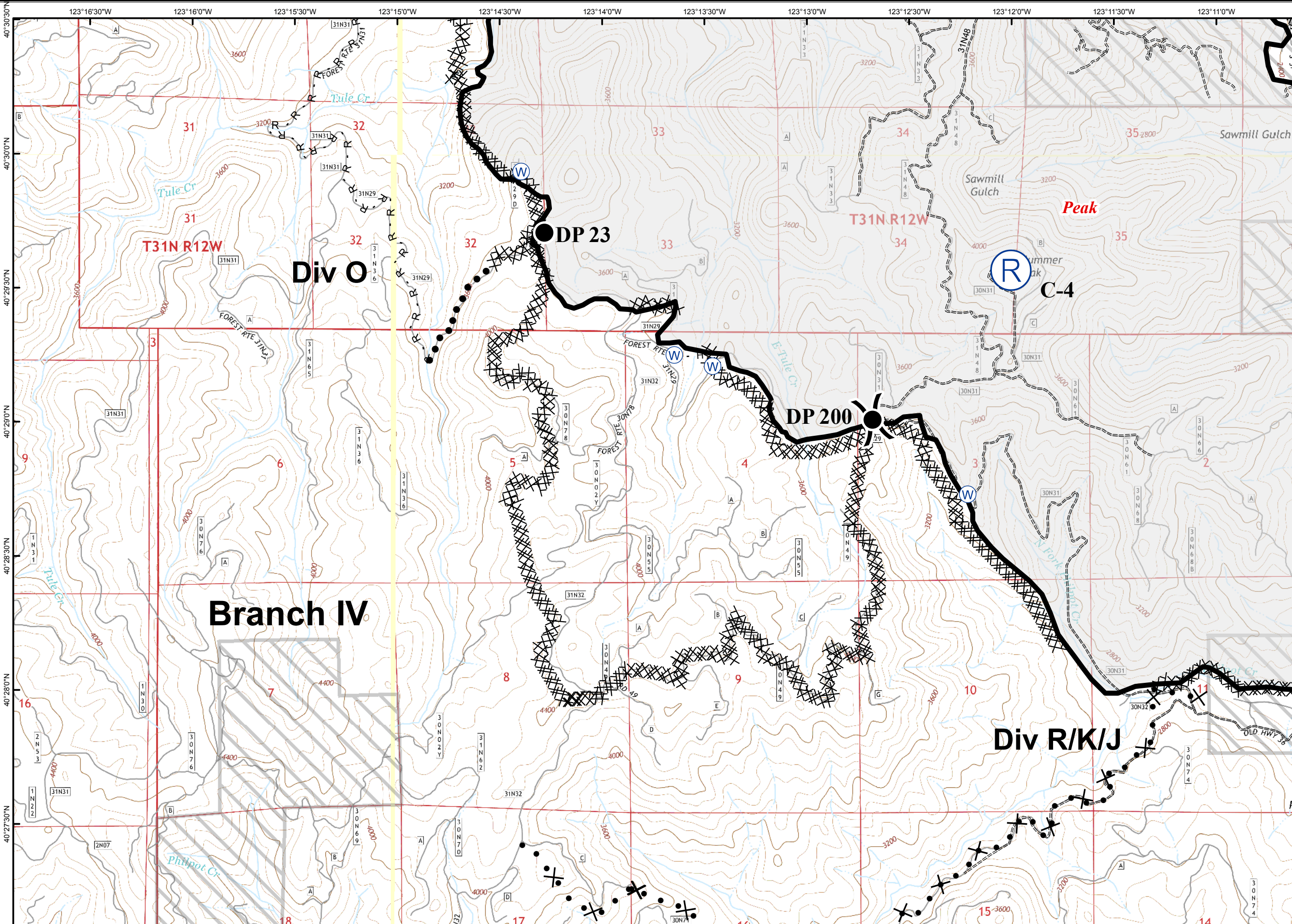
- Branch Break
- Division Break
- Uncontrolled Fire Edge
- Contained Fire Edge
- Dozer Line
- Handline
- Road as Completed Line
- Planned Line
- Planned Secondary Line
- Proposed Dozer Line
- Proposed Handline
- Incident Command Post
- Drop Point
- Staging Area
- Repeater
- Helibase
- Helispot
- Dip Site
- Water Source
- Restricted Water Source
- Pump
- Mobile Weather Unit
- Road Closure
- Fire Location
- Fire Location - Out
- SPI Gate
- Private Land within Forest Boundary
- Forest Boundary
- National Forest Boundary
- Wilderness
- Inventoried Roadless Area
- PG&E Gas Pipeline



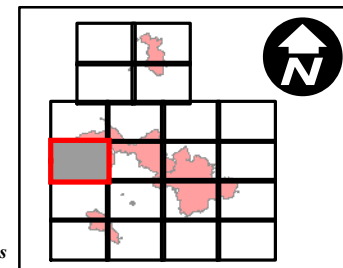


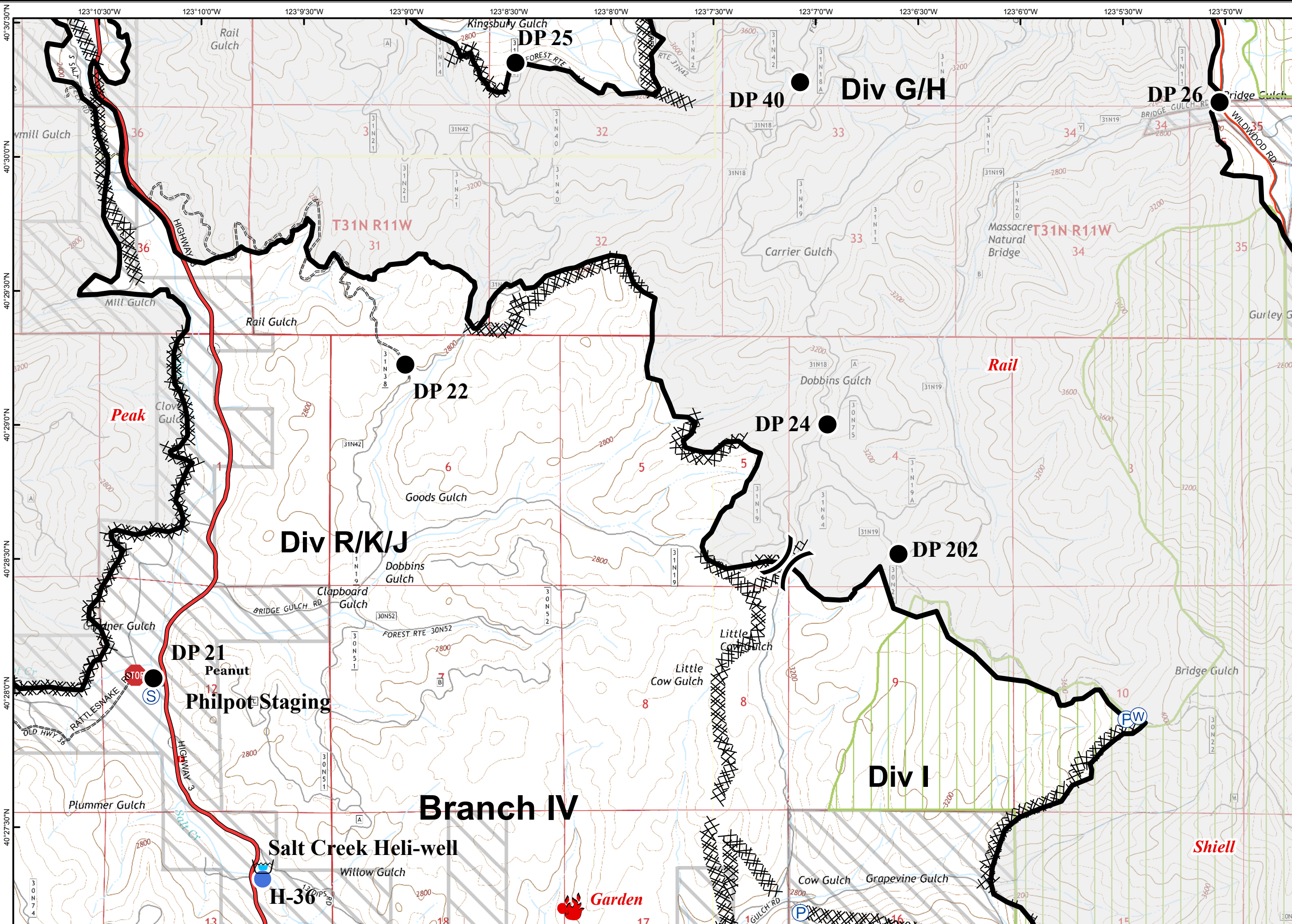
- Branch Break
- Division Break
- Uncontrolled Fire Edge
- Contained Fire Edge
- Dozer Line
- Handline
- Road as Completed Line
- Planned Line
- Planned Secondary Line
- Proposed Dozer Line
- Proposed Handline
- Incident Command Post
- Drop Point
- Staging Area
- Repeater
- Helibase
- Helispot
- Dip Site
- Water Source
- Restricted Water Source
- Pump
- Mobile Weather Unit
- Road Closure
- Fire Location
- Fire Location - Out
- SPI Gate
- Private Land within Forest Boundary
- National Forest Boundary
- Wilderness
- Inventoried Roadless Area
- PG&E Gas Pipeline



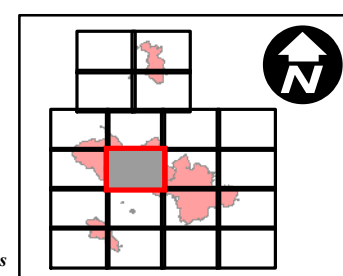


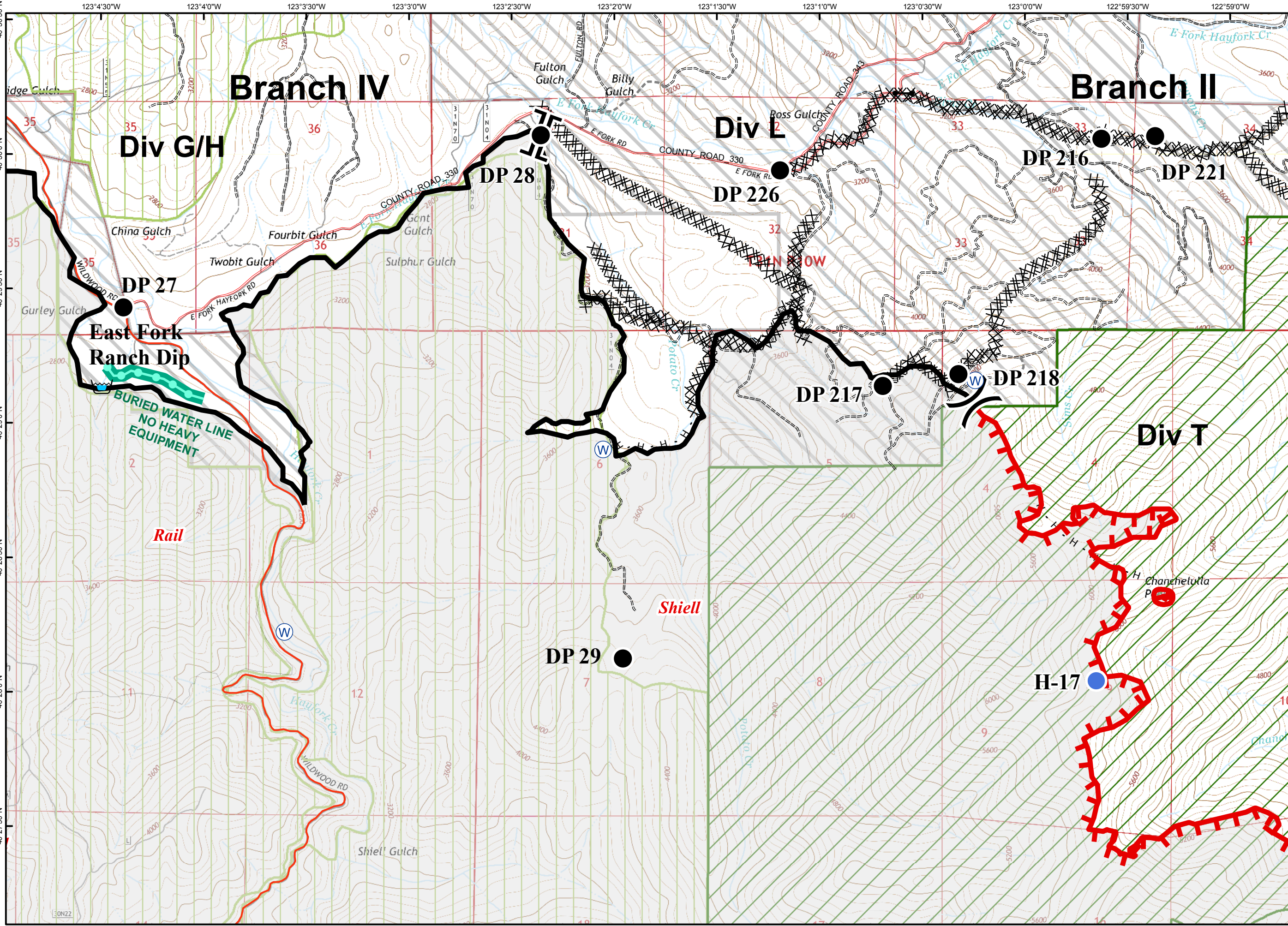
- Branch Break
- Division Break
- Uncontrolled Fire Edge
- Contained Fire Edge
- Dozer Line
- Handline
- Road as Completed Line
- Planned Line
- Planned Secondary Line
- Proposed Dozer Line
- Proposed Handline
- Incident Command Post
- Drop Point
- Staging Area
- Repeater
- Helibase
- Helispot
- Dip Site
- Water Source
- Restricted Water Source
- Pump
- Mobile Weather Unit
- Road Closure
- Fire Location
- Fire Location - Out
- SPI Gate
- Private Land within Forest Boundary
- National Forest Boundary
- Wilderness
- Inventoried Roadless Area
- PG&E Gas Pipeline



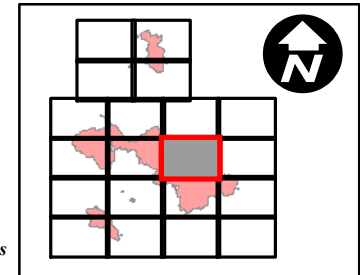


- Branch Break
- Division Break
- Uncontrolled Fire Edge
- Contained Fire Edge
- Dozer Line
- Handline
- Road as Completed Line
- Planned Line
- Planned Secondary Line
- Proposed Dozer Line
- Proposed Handline
- Incident Command Post
- Drop Point
- Staging Area
- Repeater
- Helibase
- Helispot
- Dip Site
- Water Source
- Restricted Water Source
- Pump
- Mobile Weather Unit
- Road Closure
- Fire Location
- Fire Location - Out
- SPI Gate
- Private Land within Forest Boundary
- National Forest Boundary
- Wilderness
- Inventoried Roadless Area
- PG&E Gas Pipeline



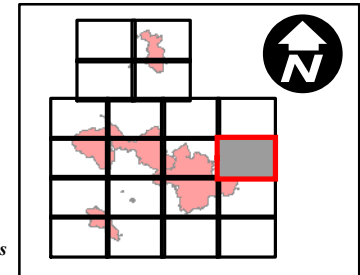
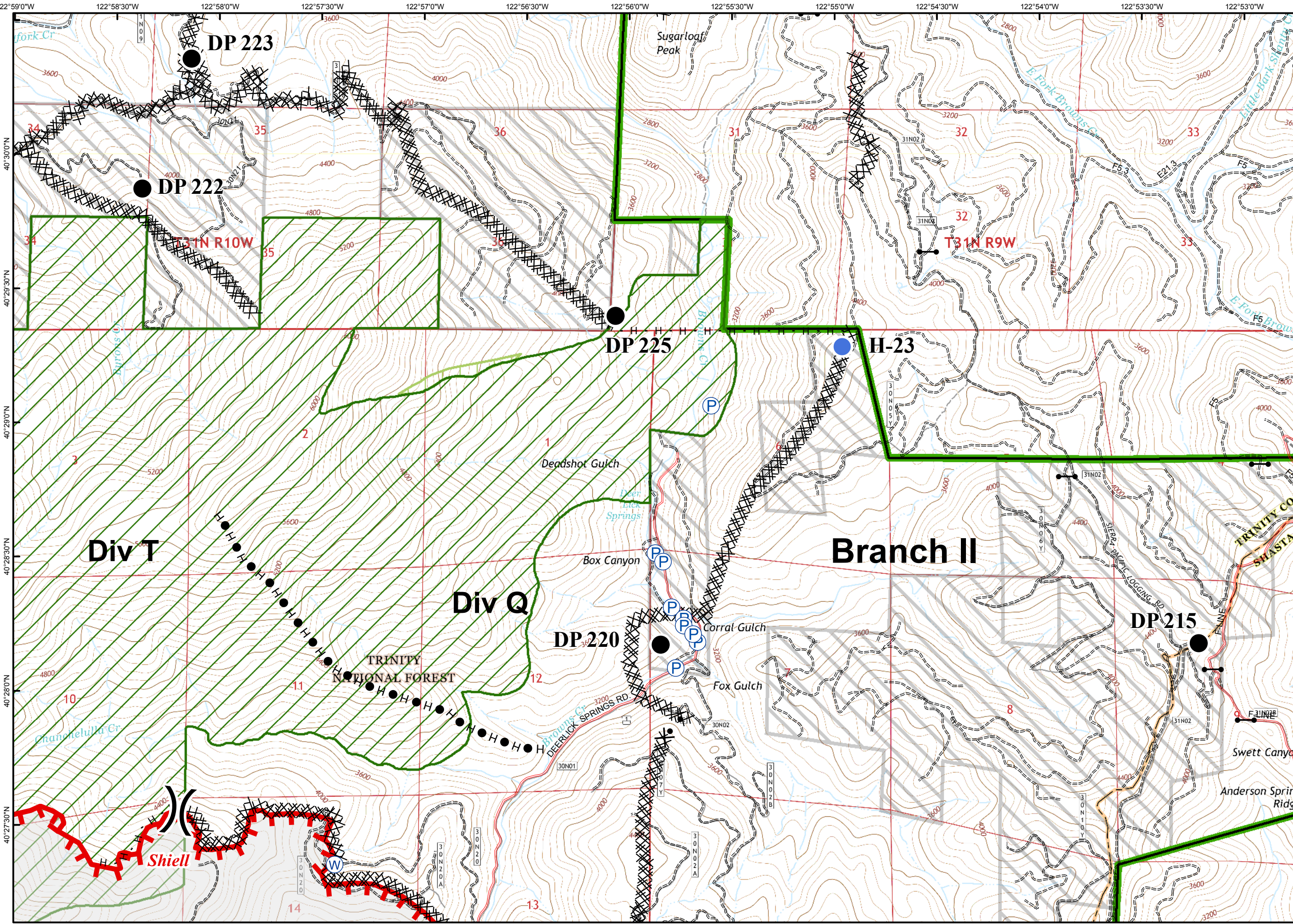


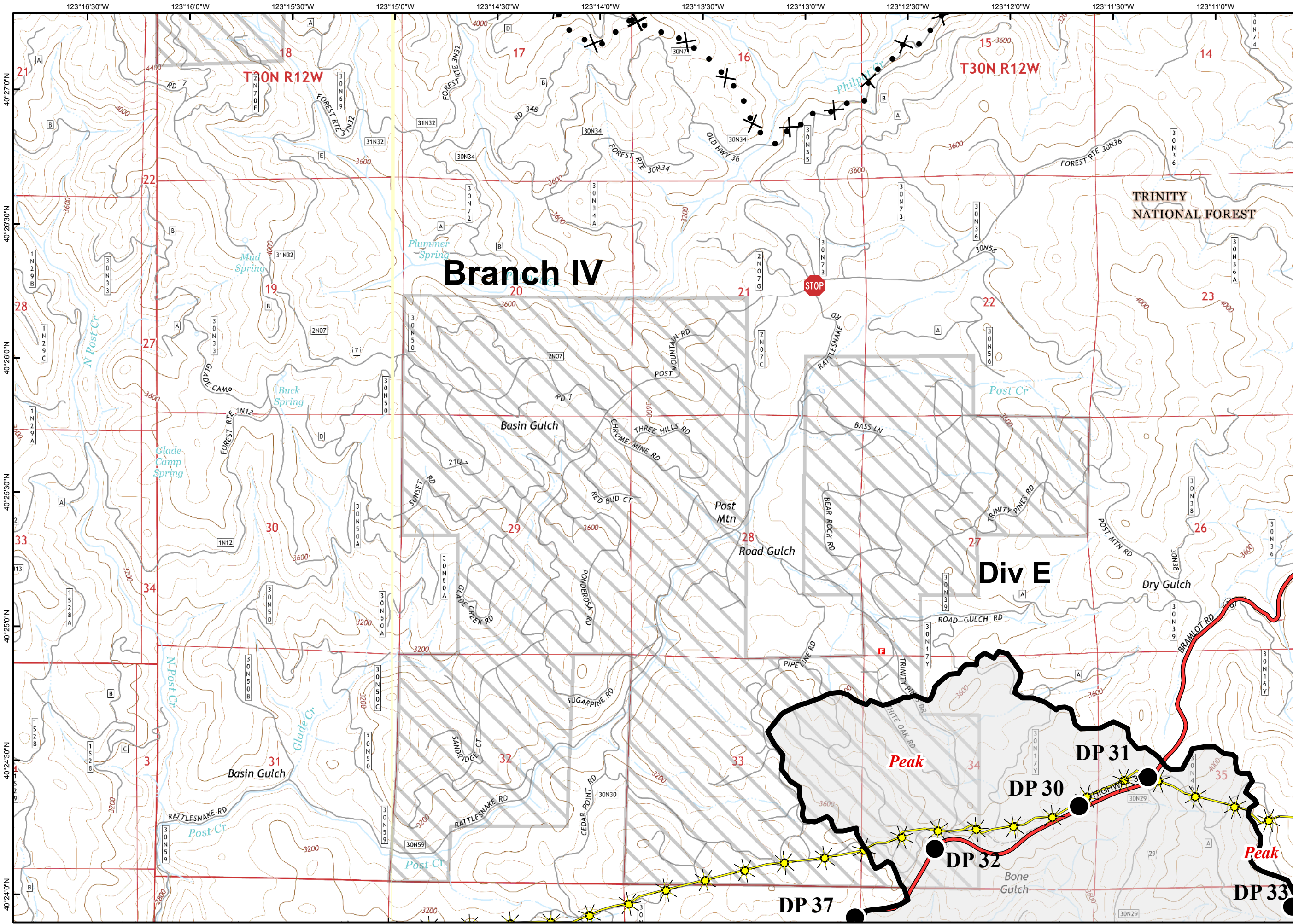
- Branch Break
- Division Break
- Uncontrolled Fire Edge
- Contained Fire Edge
- Dozer Line
- Handline
- Road as Completed Line
- Planned Line
- Planned Secondary Line
- Proposed Dozer Line
- Proposed Handline
- Incident Command Post
- Drop Point
- Staging Area
- Repeater
- Helibase
- Helispot
- Dip Site
- Water Source
- Restricted Water Source
- Pump
- Mobile Weather Unit
- Road Closure
- Fire Location
- Fire Location - Out
- SPI Gate
- Private Land within Forest Boundary
- National Forest Boundary
- Wilderness
- Inventoried Roadless Area
- PG&E Gas Pipeline



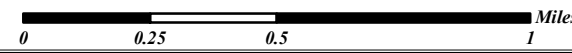
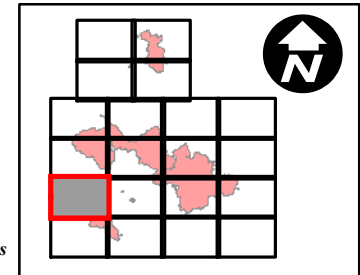


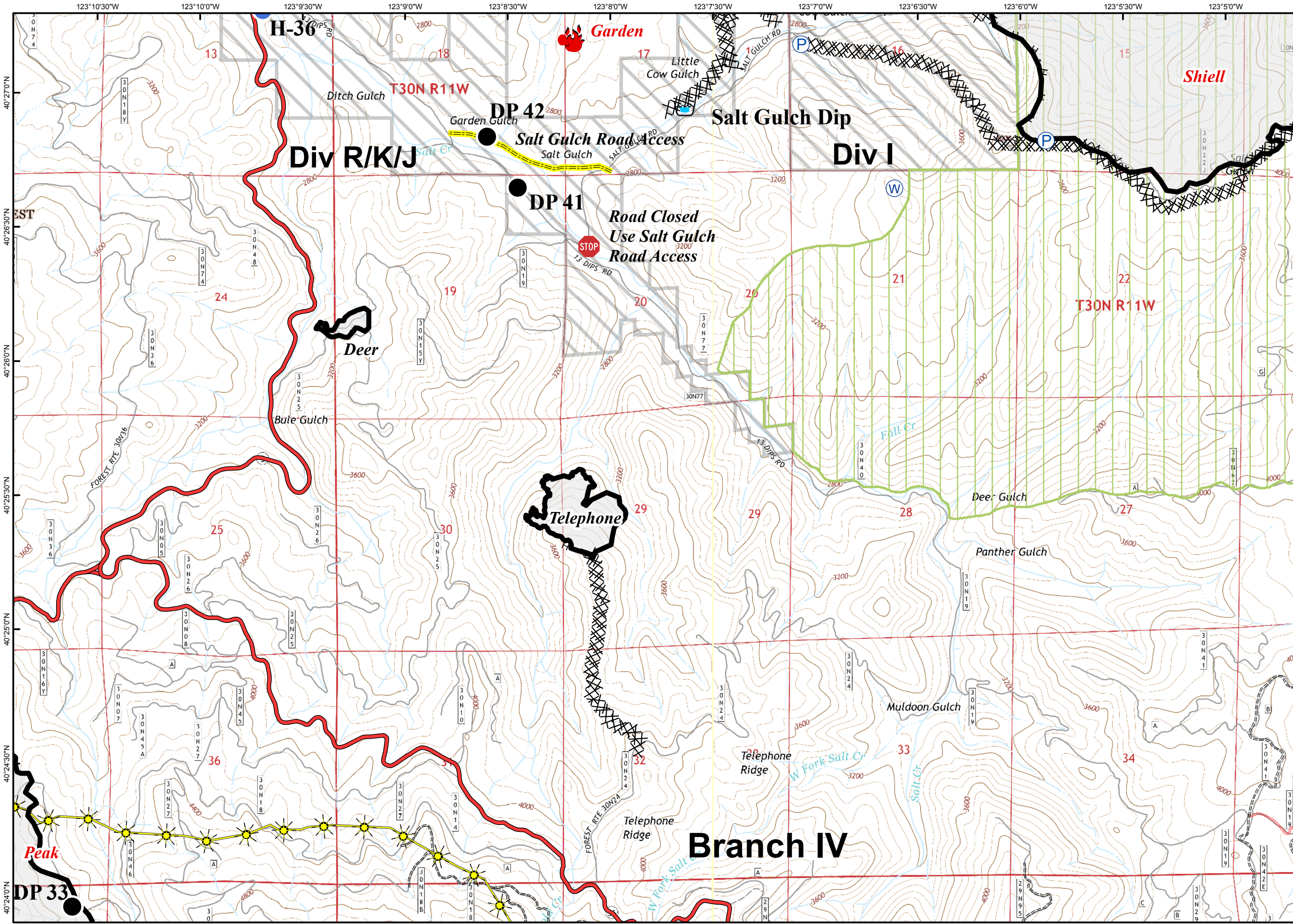
- Branch Break
- Division Break
- Uncontrolled Fire Edge
- Contained Fire Edge
- Dozer Line
- Handline
- Road as Completed Line
- Planned Line
- Planned Secondary Line
- Proposed Dozer Line
- Proposed Handline
- Incident Command Post
- Drop Point
- Staging Area
- Repeater
- Helibase
- Helispot
- Dip Site
- Water Source
- Restricted Water Source
- Pump
- Mobile Weather Unit
- Road Closure
- Fire Location
- Fire Location - Out
- SPI Gate
- Private Land within Forest Boundary
- National Forest Boundary
- Wilderness
- Inventoried Roadless Area
- PG&E Gas Pipeline



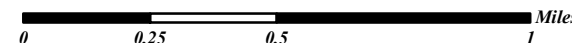
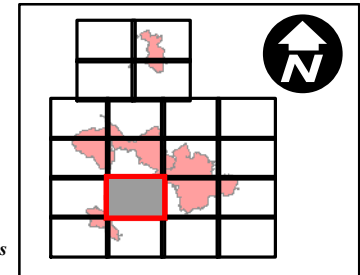


- Branch Break
- Division Break
- Uncontrolled Fire Edge
- Contained Fire Edge
- Dozer Line
- Handline
- Road as Completed Line
- Planned Line
- Planned Secondary Line
- Proposed Dozer Line
- Proposed Handline
- Incident Command Post
- Drop Point
- Staging Area
- Repeater
- Helibase
- Helispot
- Dip Site
- Water Source
- Restricted Water Source
- Pump
- Mobile Weather Unit
- Road Closure
- Fire Location
- Fire Location - Out
- SPI Gate
- Private Land within Forest Boundary
- National Forest Boundary
- Wilderness
- Inventoried Roadless Area
- PG&E Gas Pipeline

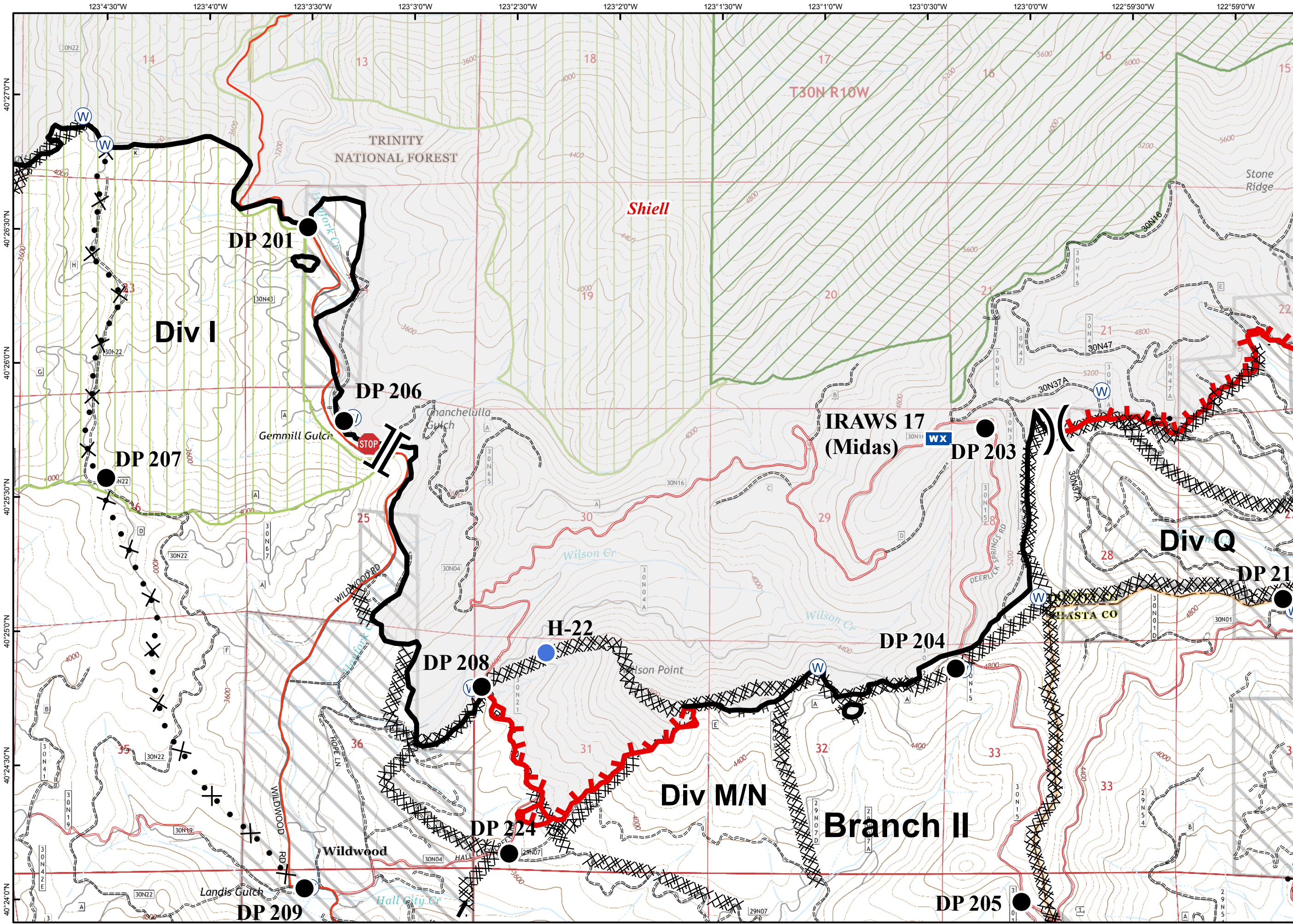




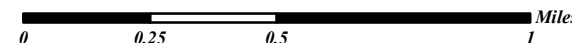
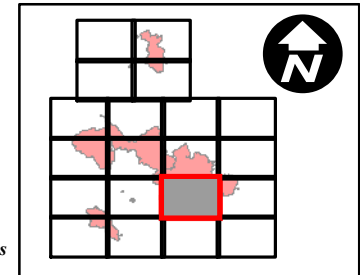
- Branch Break
- Division Break
- Uncontrolled Fire Edge
- Contained Fire Edge
- Dozer Line
- Handline
- Road as Completed Line
- Planned Line
- Planned Secondary Line
- Proposed Dozer Line
- Proposed Handline
- Incident Command Post
- Drop Point
- Staging Area
- Repeater
- Helibase
- Helispot
- Dip Site
- Water Source
- Restricted Water Source
- Pump
- Mobile Weather Unit
- Road Closure
- Fire Location
- Fire Location - Out
- SPI Gate
- Private Land within Forest Boundary
- National Forest Boundary
- Wilderness
- Inventoried Roadless Area
- PG&E Gas Pipeline





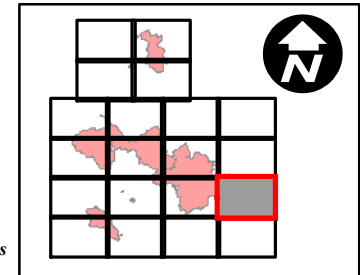
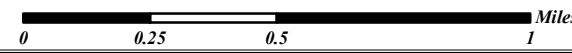
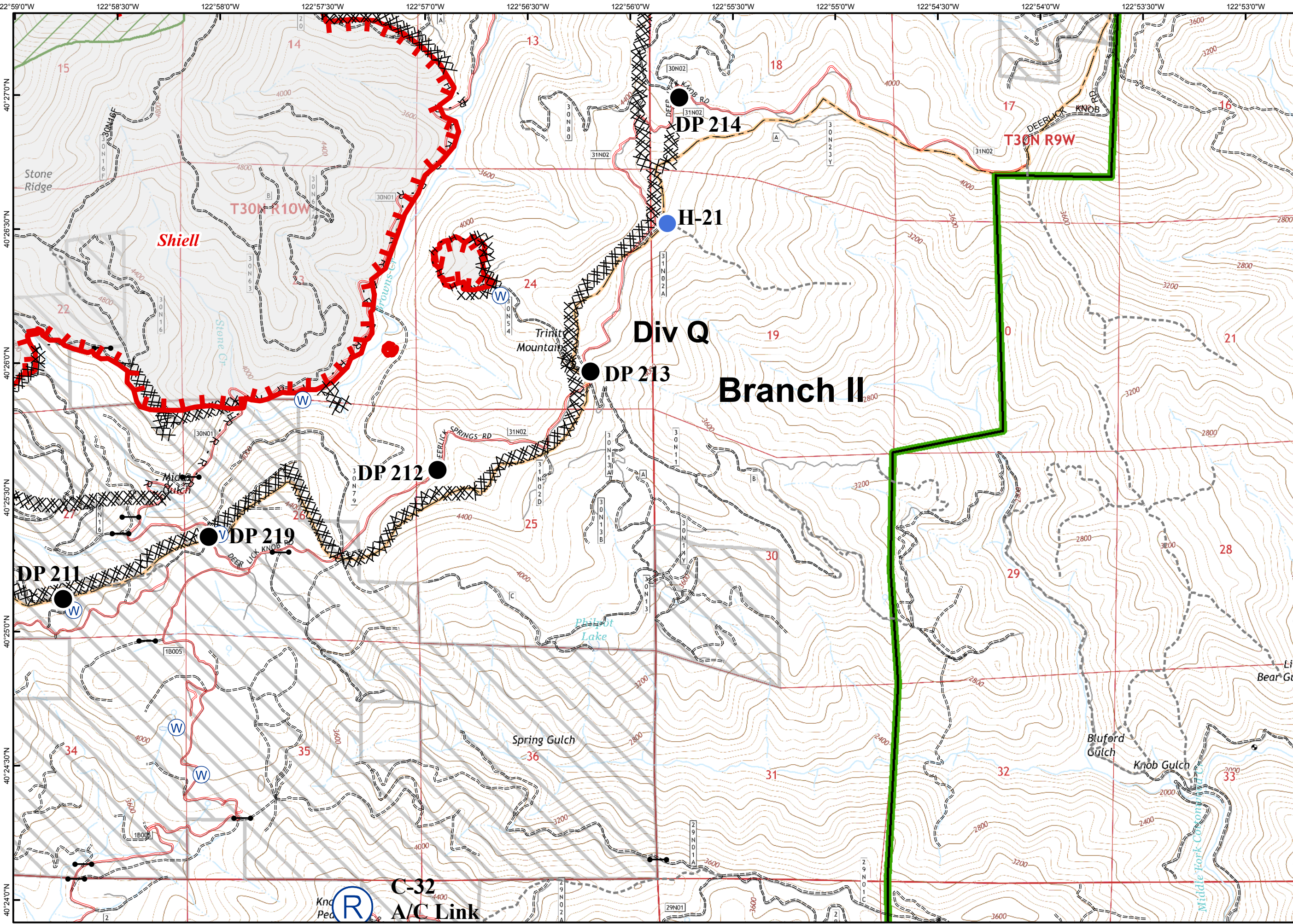


- Branch Break
- Division Break
- Uncontrolled Fire Edge
- Contained Fire Edge
- Dozer Line
- Handline
- Road as Completed Line
- Planned Line
- Planned Secondary Line
- Proposed Dozer Line
- Proposed Handline
- Incident Command Post
- Drop Point
- Staging Area
- Repeater
- Helibase
- Helispot
- Dip Site
- Water Source
- Restricted Water Source
- Pump
- Mobile Weather Unit
- Road Closure
- Fire Location
- Fire Location - Out
- SPI Gate
- Private Land within Forest Boundary
- National Forest Boundary
- Wilderness
- Inventoried Roadless Area
- PG&E Gas Pipeline



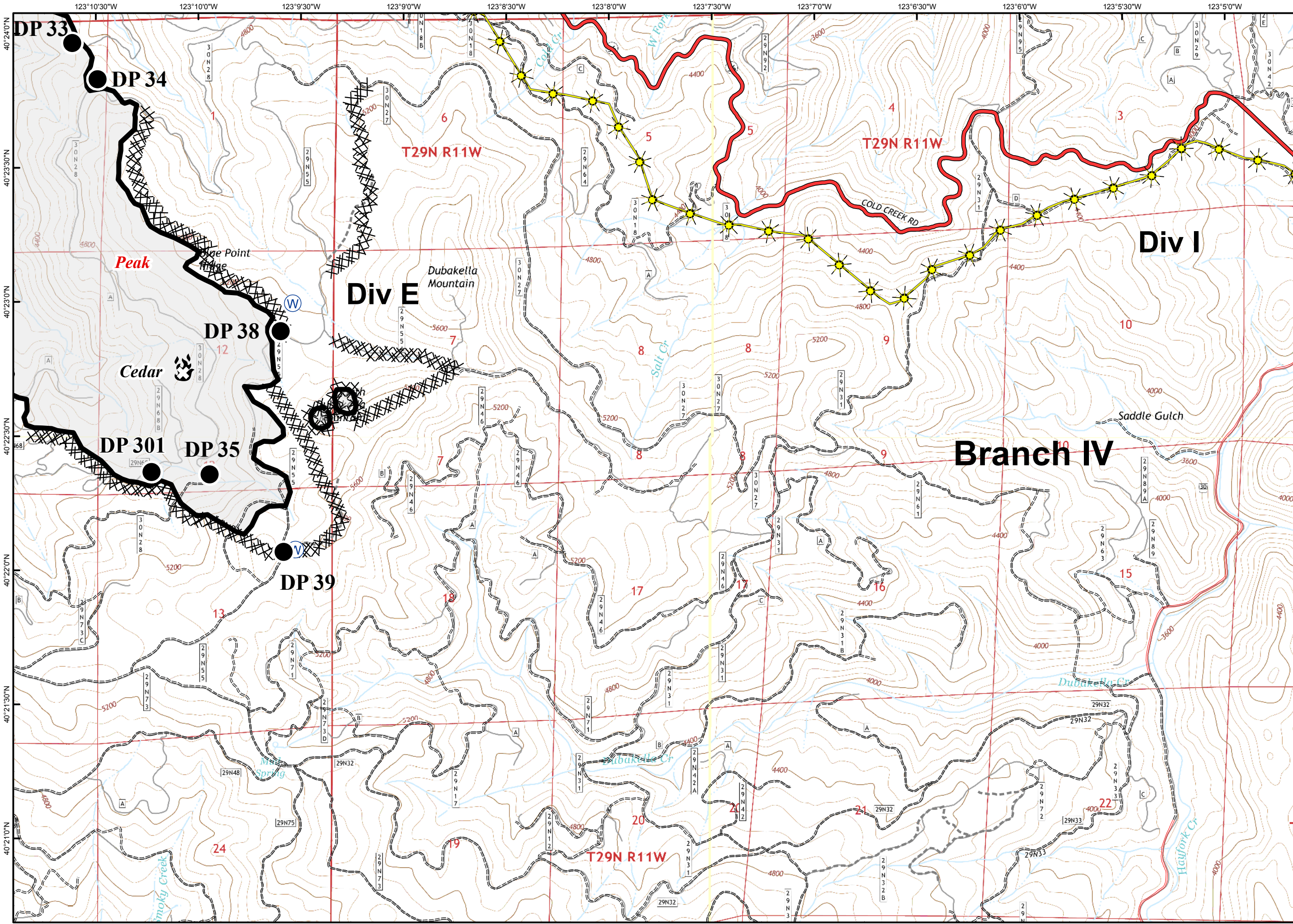


- Branch Break
- Division Break
- Uncontrolled Fire Edge
- Contained Fire Edge
- Dozer Line
- Handline
- Road as Completed Line
- Planned Line
- Planned Secondary Line
- Proposed Dozer Line
- Proposed Handline
- Incident Command Post
- Drop Point
- Staging Area
- Repeater
- Helibase
- Helispot
- Dip Site
- Water Source
- Restricted Water Source
- Pump
- Mobile Weather Unit
- Road Closure
- Fire Location
- Fire Location - Out
- SPI Gate
- Private Land within Forest Boundary
- National Forest Boundary
- Wilderness
- Inventoried Roadless Area
- PG&E Gas Pipeline

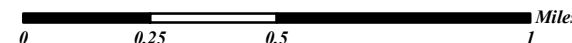
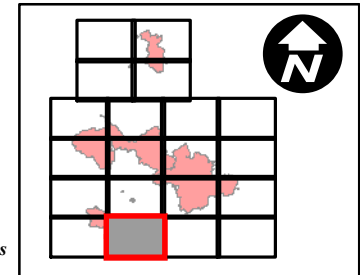


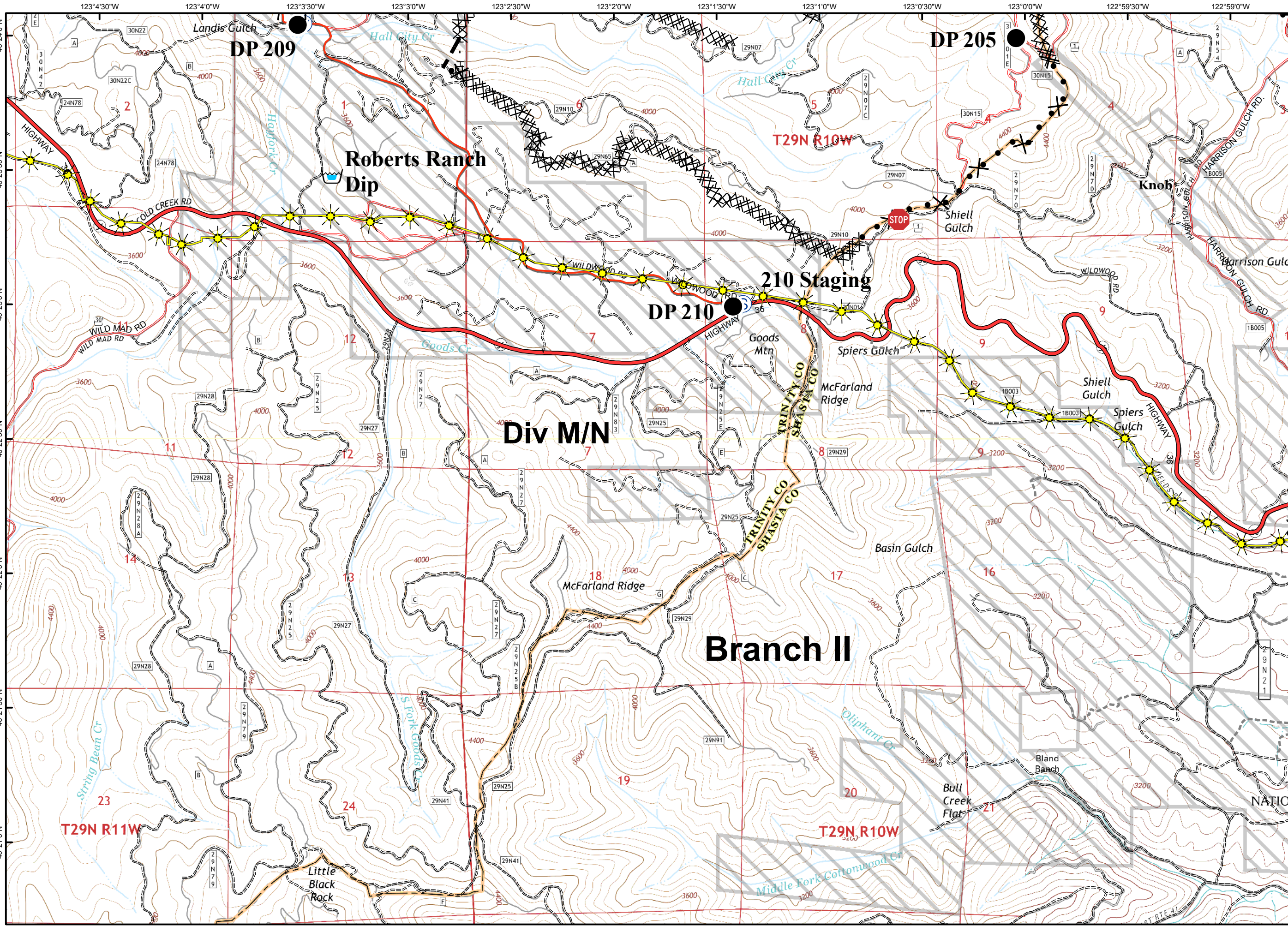
C-32  
 A/C Link



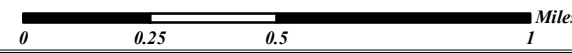
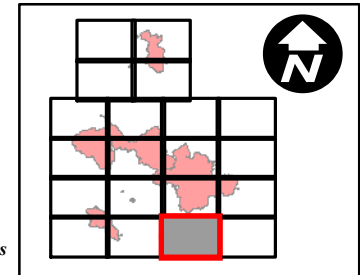


- Branch Break
- Division Break
- Uncontrolled Fire Edge
- Contained Fire Edge
- Dozer Line
- Handline
- Road as Completed Line
- Planned Line
- Planned Secondary Line
- Proposed Dozer Line
- Proposed Handline
- Incident Command Post
- Drop Point
- Staging Area
- Repeater
- Helibase
- Helispot
- Dip Site
- Water Source
- Restricted Water Source
- Pump
- Mobile Weather Unit
- Road Closure
- Fire Location
- Fire Location - Out
- SPI Gate
- Private Land within Forest Boundary
- National Forest Boundary
- Wilderness
- Inventoried Roadless Area
- PG&E Gas Pipeline





- Branch Break
- Division Break
- Uncontrolled Fire Edge
- Contained Fire Edge
- Dozer Line
- Handline
- Road as Completed Line
- Planned Line
- Planned Secondary Line
- Proposed Dozer Line
- Proposed Handline
- Incident Command Post
- Drop Point
- Staging Area
- Repeater
- Helibase
- Helispot
- Dip Site
- Water Source
- Restricted Water Source
- Pump
- Mobile Weather Unit
- Road Closure
- Fire Location
- Fire Location - Out
- SPI Gate
- Private Land within Forest Boundary
- National Forest Boundary
- Wilderness
- Inventoried Roadless Area
- PG&E Gas Pipeline





- Branch Break
- Division Break
- Uncontrolled Fire Edge
- Contained Fire Edge
- Dozer Line
- Handline
- Road as Completed Line
- Planned Line
- Planned Secondary Line
- Proposed Dozer Line
- Proposed Handline
- Incident Command Post
- Drop Point
- Staging Area
- Repeater
- Helibase
- Helispot
- Dip Site
- Water Source
- Restricted Water Source
- Pump
- Mobile Weather Unit
- Road Closure
- Fire Location
- Fire Location - Out
- SPI Gate
- Private Land within Forest Boundary
- National Forest Boundary
- Wilderness
- Inventoried Roadless Area
- PG&E Gas Pipeline

