

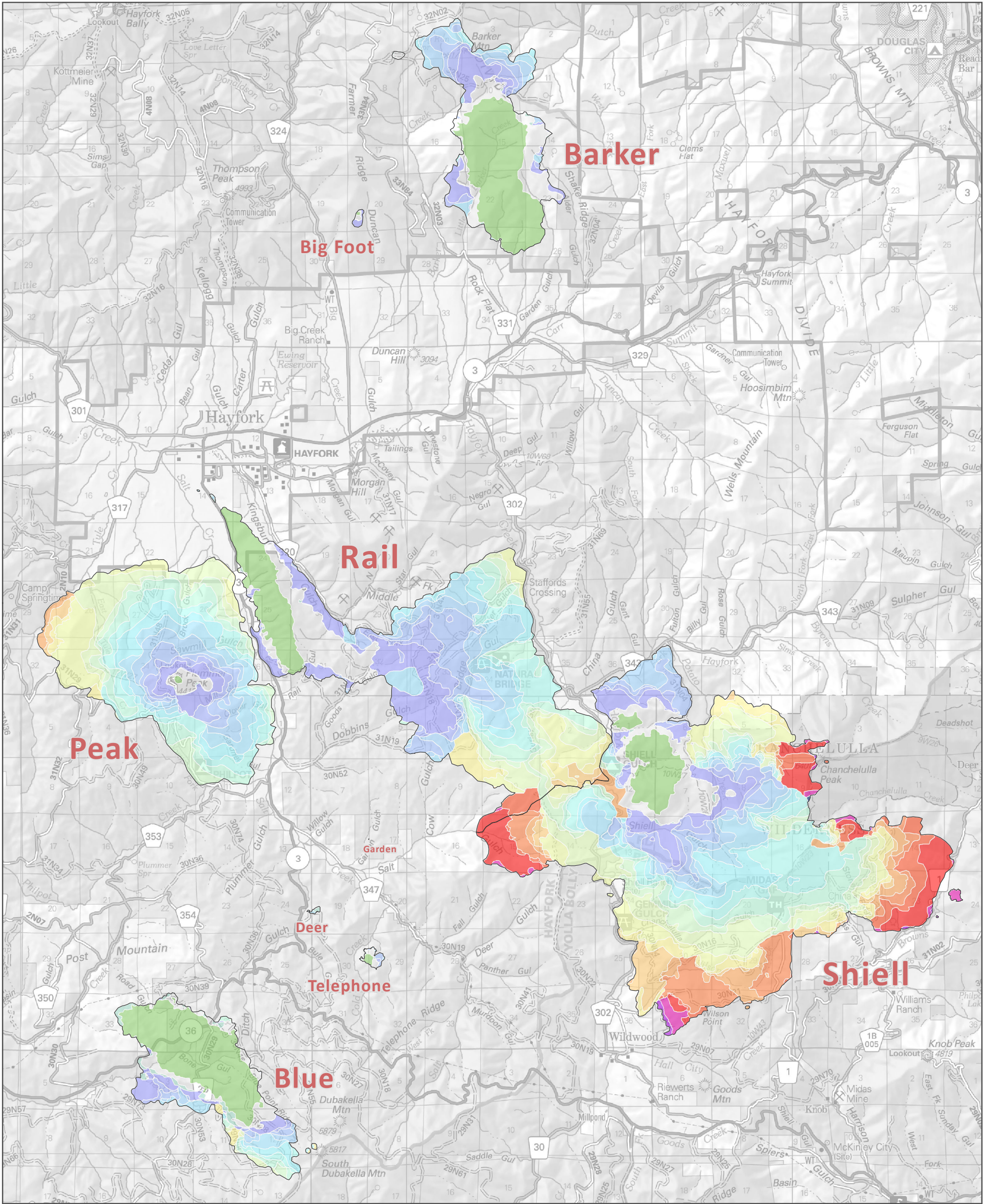
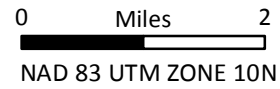


# FIRE PROGRESSION Fork Complex

CA-SHF 002067



36,499 total acres  
as of 08/26/2015



### FIRE GROWTH PERIODS

- |   |  |  |
|---|--|--|
| 01) 4579 acres - 4:00 PM Jul 30 to 8:09 PM Jul 31 | 09) 1871 acres - 9:06 PM Aug 7 to 12:00 AM Aug 9     | 17) 742 acres - 8:39 PM Aug 15 to 10:56 PM Aug 16  |
| 02) 2699 acres - 8:09 PM Jul 30 to 11:09 PM Aug 1 | 10) 2855 acres - 12:00 AM Aug 9 to 11:18 PM Aug 9    | 18) 1044 acres - 10:56 PM Aug 17 to 4:27 AM Aug 18 |
| 03) 208 acres - 11:09 PM Aug 1 to 12:09 AM Aug 2  | 11) 2379 acres - 11:18 PM Aug 9 to 11:11 PM Aug 10   | 19) 640 acres - 4:27 AM Aug 18 to 10:30 PM Aug 18  |
| 04) 2926 acres - 12:09 AM Aug 2 to 12:14 AM Aug 4 | 12) 1648 acres - 11:11 PM Aug 10 to 12:02 AM Aug 12  | 20) 1120 acres - 10:30 PM Aug 18 to 2:04 AM Aug 20 |
| 05) 1214 acres - 12:14 AM Aug 4 to 11:39 AM Aug 4 | 13) 2585 acres - 12:02 AM Aug 12 to 10:44 PM Aug 12  | 21) 169 acres - 2:04 AM Aug 20 to 7:57 PM Aug 20   |
| 06) 1801 acres - 11:39 AM Aug 4 to 8:47 PM Aug 5  | 14) 2064 acres - 10:44 PM Aug 12 to 11:30 PM Aug 13  | 22) 37 acres - 7:57 PM Aug 20 to 1:00 AM Aug 22    |
| 07) 1816 acres - 8:47 PM Aug 5 to 10:45 PM Aug 6  | 15) 1056 acres - 11:31 PM Aug 13 to 11:08 PM Aug 14  | 23) 5 acres - 1:00 AM Aug 22 to 2:30 AM Aug 23     |
| 08) 2431 acres - 10:45 PM Aug 6 to 9:06 PM Aug 7  | 16) 691 acres - 11:08 PM August 14 to 8:39 PM Aug 15 |  |

Data:NIROPS Note:Polygon not available for 8-3-15

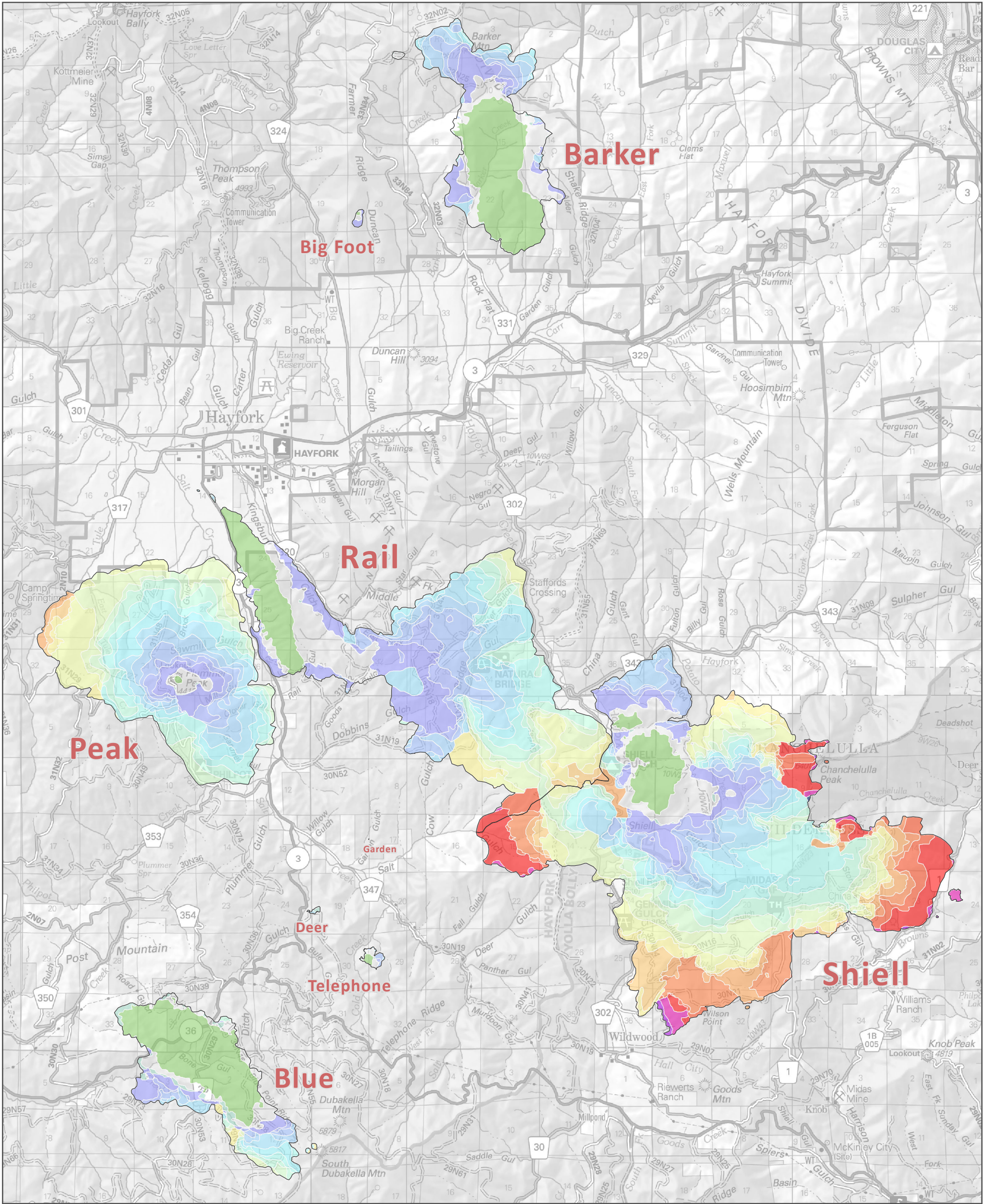
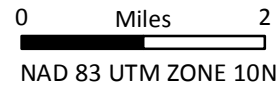


# FIRE PROGRESSION Fork Complex

CA-SHF 002067



36,499 total acres  
as of 08/26/2015



### FIRE GROWTH PERIODS

- |   |  |  |
|---|--|--|
| 01) 4579 acres - 4:00 PM Jul 30 to 8:09 PM Jul 31 | 09) 1871 acres - 9:06 PM Aug 7 to 12:00 AM Aug 9     | 17) 742 acres - 8:39 PM Aug 15 to 10:56 PM Aug 16  |
| 02) 2699 acres - 8:09 PM Jul 30 to 11:09 PM Aug 1 | 10) 2855 acres - 12:00 AM Aug 9 to 11:18 PM Aug 9    | 18) 1044 acres - 10:56 PM Aug 17 to 4:27 AM Aug 18 |
| 03) 208 acres - 11:09 PM Aug 1 to 12:09 AM Aug 2  | 11) 2379 acres - 11:18 PM Aug 9 to 11:11 PM Aug 10   | 19) 640 acres - 4:27 AM Aug 18 to 10:30 PM Aug 18  |
| 04) 2926 acres - 12:09 AM Aug 2 to 12:14 AM Aug 4 | 12) 1648 acres - 11:11 PM Aug 10 to 12:02 AM Aug 12  | 20) 1120 acres - 10:30 PM Aug 18 to 2:04 AM Aug 20 |
| 05) 1214 acres - 12:14 AM Aug 4 to 11:39 AM Aug 4 | 13) 2585 acres - 12:02 AM Aug 12 to 10:44 PM Aug 12  | 21) 169 acres - 2:04 AM Aug 20 to 7:57 PM Aug 20   |
| 06) 1801 acres - 11:39 AM Aug 4 to 8:47 PM Aug 5  | 14) 2064 acres - 10:44 PM Aug 12 to 11:30 PM Aug 13  | 22) 37 acres - 7:57 PM Aug 20 to 1:00 AM Aug 22    |
| 07) 1816 acres - 8:47 PM Aug 5 to 10:45 PM Aug 6  | 15) 1056 acres - 11:31 PM Aug 13 to 11:08 PM Aug 14  | 23) 5 acres - 1:00 AM Aug 22 to 2:30 AM Aug 23     |
| 08) 2431 acres - 10:45 PM Aug 6 to 9:06 PM Aug 7  | 16) 691 acres - 11:08 PM August 14 to 8:39 PM Aug 15 |  |

Data:NIROPS Note:Polygon not available for 8-3-15

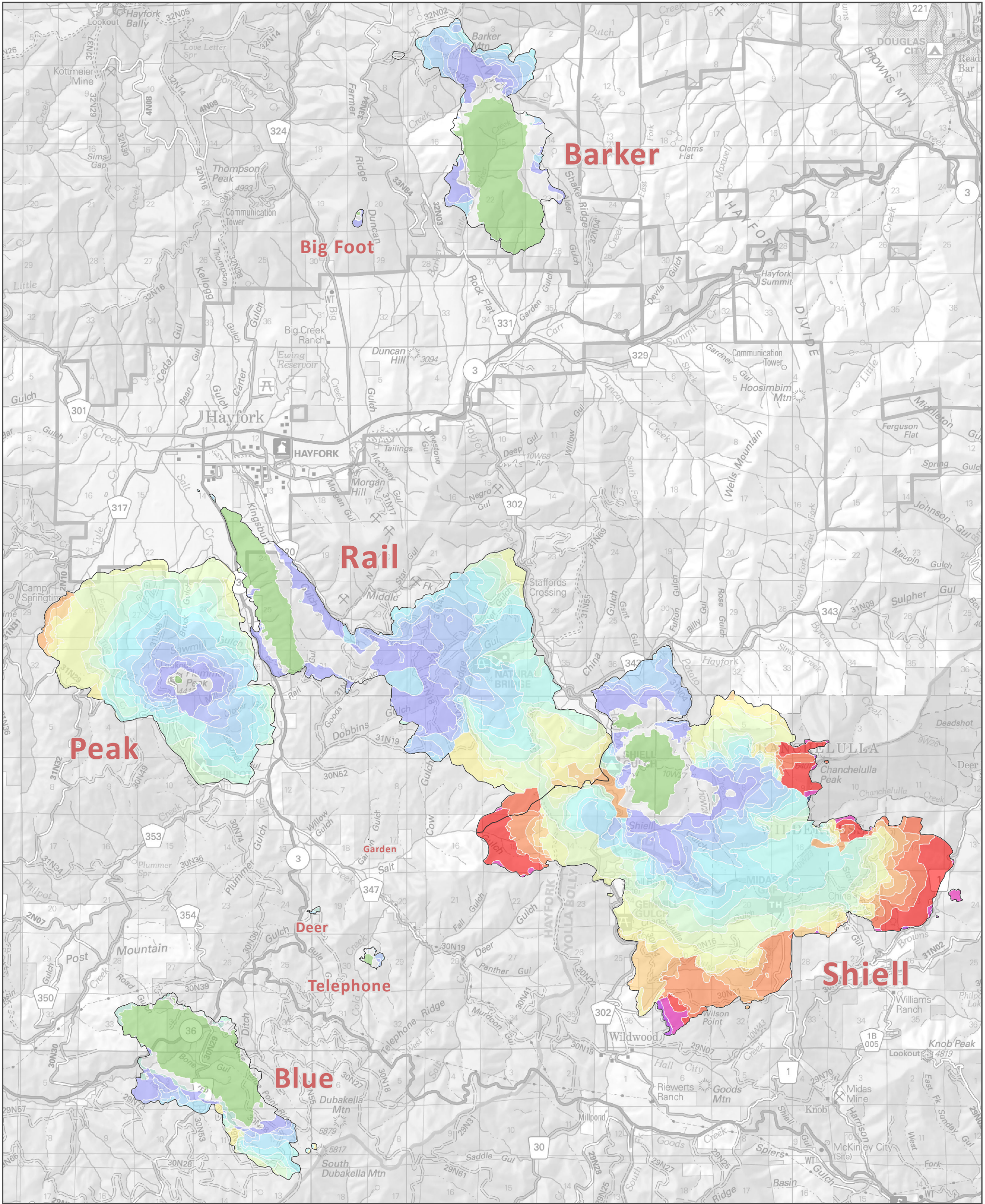
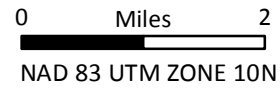


# FIRE PROGRESSION Fork Complex

CA-SHF 002067



36,499 total acres  
as of 08/26/2015



### FIRE GROWTH PERIODS

- |   |  |  |
|---|--|--|
| 01) 4579 acres - 4:00 PM Jul 30 to 8:09 PM Jul 31 | 09) 1871 acres - 9:06 PM Aug 7 to 12:00 AM Aug 9     | 17) 742 acres - 8:39 PM Aug 15 to 10:56 PM Aug 16  |
| 02) 2699 acres - 8:09 PM Jul 30 to 11:09 PM Aug 1 | 10) 2855 acres - 12:00 AM Aug 9 to 11:18 PM Aug 9    | 18) 1044 acres - 10:56 PM Aug 17 to 4:27 AM Aug 18 |
| 03) 208 acres - 11:09 PM Aug 1 to 12:09 AM Aug 2  | 11) 2379 acres - 11:18 PM Aug 9 to 11:11 PM Aug 10   | 19) 640 acres - 4:27 AM Aug 18 to 10:30 PM Aug 18  |
| 04) 2926 acres - 12:09 AM Aug 2 to 12:14 AM Aug 4 | 12) 1648 acres - 11:11 PM Aug 10 to 12:02 AM Aug 12  | 20) 1120 acres - 10:30 PM Aug 18 to 2:04 AM Aug 20 |
| 05) 1214 acres - 12:14 AM Aug 4 to 11:39 AM Aug 4 | 13) 2585 acres - 12:02 AM Aug 12 to 10:44 PM Aug 12  | 21) 169 acres - 2:04 AM Aug 20 to 7:57 PM Aug 20   |
| 06) 1801 acres - 11:39 AM Aug 4 to 8:47 PM Aug 5  | 14) 2064 acres - 10:44 PM Aug 12 to 11:30 PM Aug 13  | 22) 37 acres - 7:57 PM Aug 20 to 1:00 AM Aug 22    |
| 07) 1816 acres - 8:47 PM Aug 5 to 10:45 PM Aug 6  | 15) 1056 acres - 11:31 PM Aug 13 to 11:08 PM Aug 14  | 23) 5 acres - 1:00 AM Aug 22 to 2:30 AM Aug 23     |
| 08) 2431 acres - 10:45 PM Aug 6 to 9:06 PM Aug 7  | 16) 691 acres - 11:08 PM August 14 to 8:39 PM Aug 15 |  |

Data:NIROPS Note:Polygon not available for 8-3-15

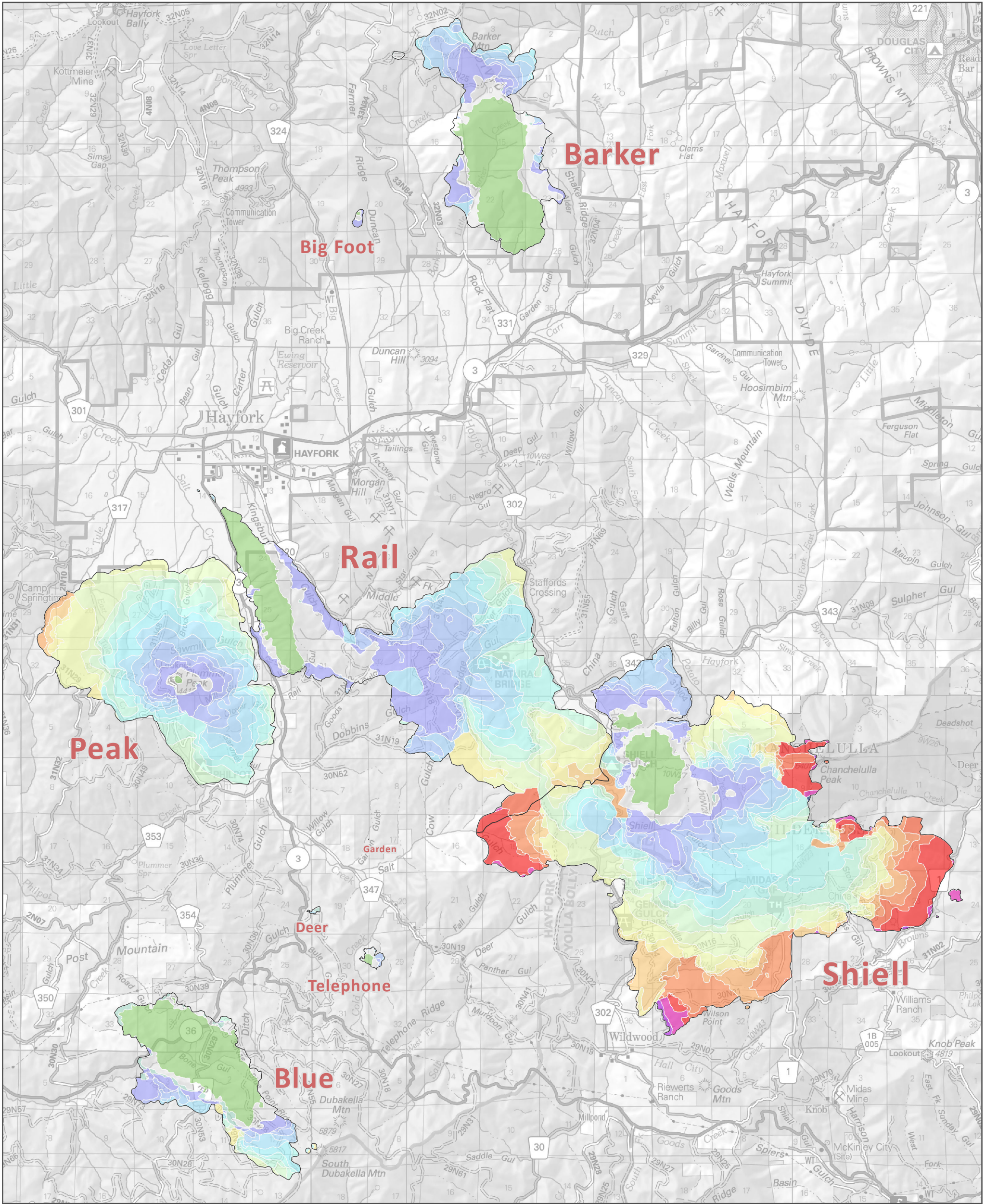
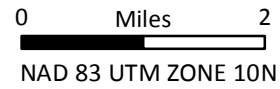


# FIRE PROGRESSION Fork Complex

CA-SHF 002067



36,499 total acres  
as of 08/26/2015



### FIRE GROWTH PERIODS

- |   |  |  |
|---|--|--|
| 01) 4579 acres - 4:00 PM Jul 30 to 8:09 PM Jul 31 | 09) 1871 acres - 9:06 PM Aug 7 to 12:00 AM Aug 9     | 17) 742 acres - 8:39 PM Aug 15 to 10:56 PM Aug 16  |
| 02) 2699 acres - 8:09 PM Jul 30 to 11:09 PM Aug 1 | 10) 2855 acres - 12:00 AM Aug 9 to 11:18 PM Aug 9    | 18) 1044 acres - 10:56 PM Aug 17 to 4:27 AM Aug 18 |
| 03) 208 acres - 11:09 PM Aug 1 to 12:09 AM Aug 2  | 11) 2379 acres - 11:18 PM Aug 9 to 11:11 PM Aug 10   | 19) 640 acres - 4:27 AM Aug 18 to 10:30 PM Aug 18  |
| 04) 2926 acres - 12:09 AM Aug 2 to 12:14 AM Aug 4 | 12) 1648 acres - 11:11 PM Aug 10 to 12:02 AM Aug 12  | 20) 1120 acres - 10:30 PM Aug 18 to 2:04 AM Aug 20 |
| 05) 1214 acres - 12:14 AM Aug 4 to 11:39 AM Aug 4 | 13) 2585 acres - 12:02 AM Aug 12 to 10:44 PM Aug 12  | 21) 169 acres - 2:04 AM Aug 20 to 7:57 PM Aug 20   |
| 06) 1801 acres - 11:39 AM Aug 4 to 8:47 PM Aug 5  | 14) 2064 acres - 10:44 PM Aug 12 to 11:30 PM Aug 13  | 22) 37 acres - 7:57 PM Aug 20 to 1:00 AM Aug 22    |
| 07) 1816 acres - 8:47 PM Aug 5 to 10:45 PM Aug 6  | 15) 1056 acres - 11:31 PM Aug 13 to 11:08 PM Aug 14  | 23) 5 acres - 1:00 AM Aug 22 to 2:30 AM Aug 23     |
| 08) 2431 acres - 10:45 PM Aug 6 to 9:06 PM Aug 7  | 16) 691 acres - 11:08 PM August 14 to 8:39 PM Aug 15 |  |

Data:NIROPS Note:Polygon not available for 8-3-15