

**Fork Complex
CA-SHF-002067
Suppression Repair
08/28/15 Day Shift**

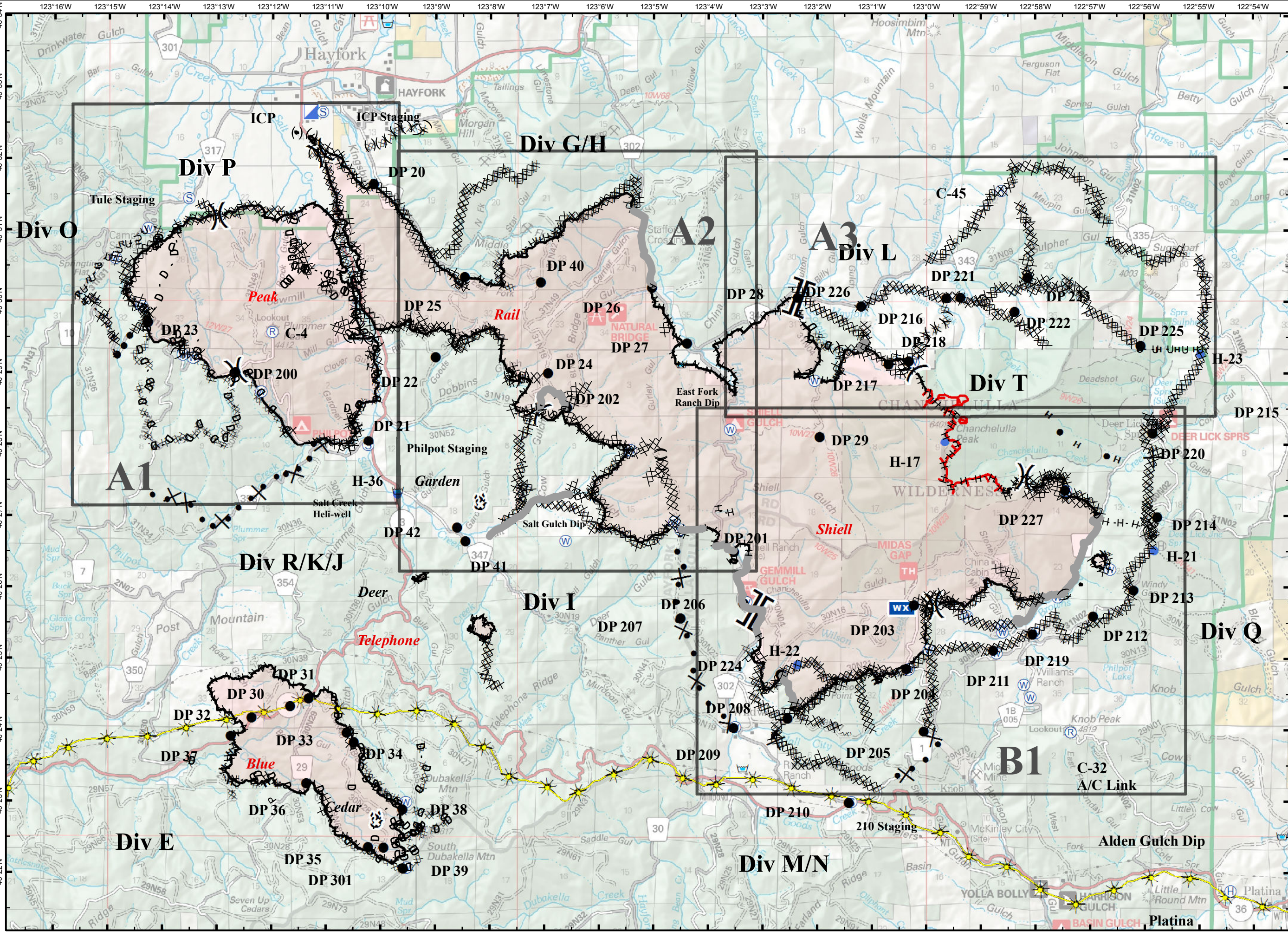


**36,499 acres as of
8/25 @ 0600**

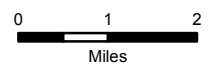
- (X) Division Break
- Incident Command Post
- Drop Point
- Ⓢ Staging Area
- Ⓡ Repeater
- Ⓜ Helibase
- Helispot
- Ⓜ Dip Site
- Ⓜ Water Source
- Ⓜ Restricted Water Source
- Ⓜ Mobile Weather Unit
- 🔥 Fire Location
- 🔥 Fire Location - Out
- XXXXX Dozer Line Identified for Repair
- No Repair Required
- - - Dozer Line In Progress
- D - D - Completed Repair
- (X)(X) Dozer Line, Unknown
- H - H - H Handline Identified for Repair
- U - U - Unknown
- Road, Identified for Repair
- ⚡ PG&E Gas Pipeline



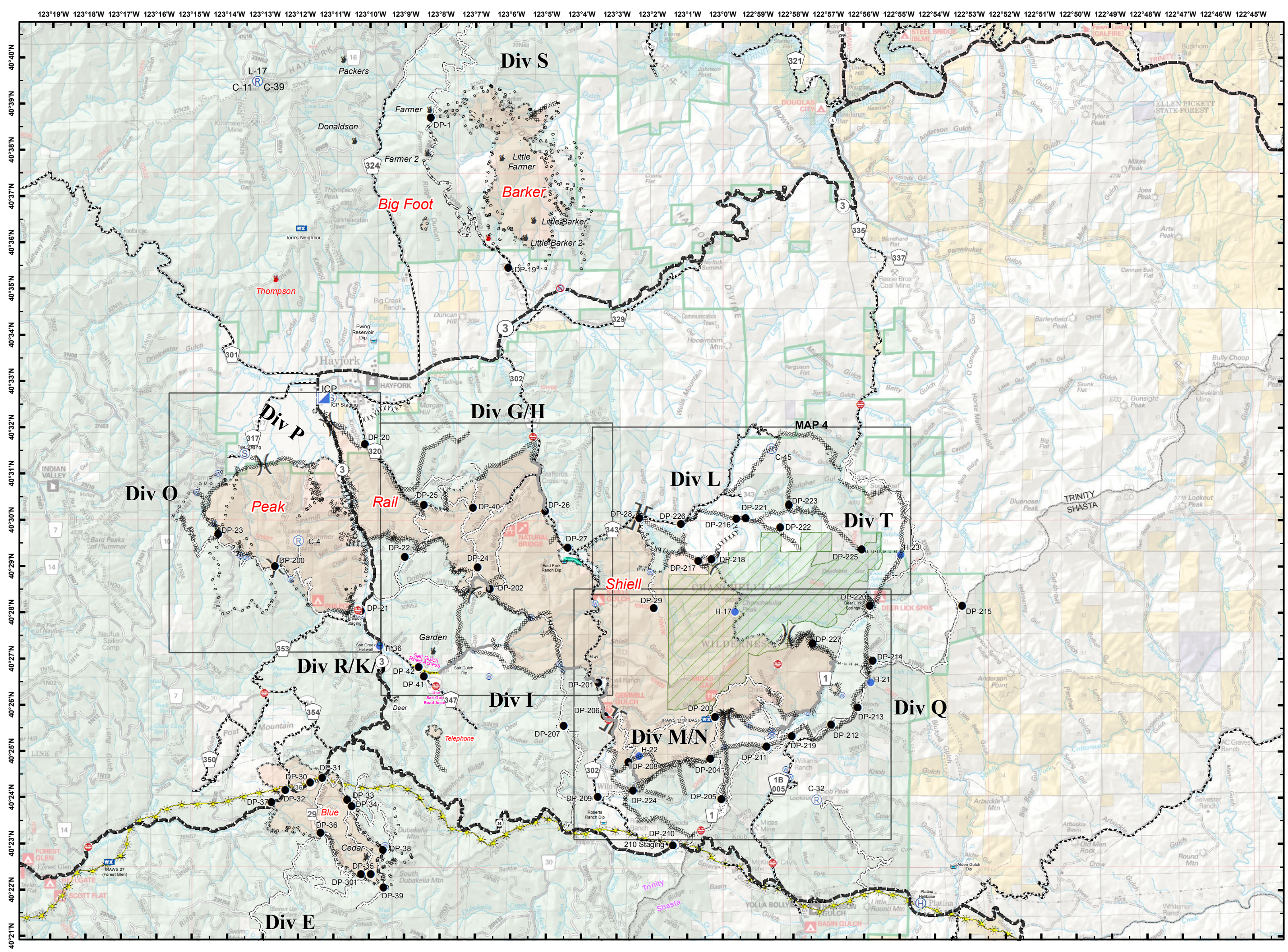
0 0.5 1 2 Miles



Fork Complex CA-SHF-002067 Transportation Map



- Major Highways
- County Roads
- Travel Routes
- Incident Command Post
- Drop Point
- Staging Area
- Repeater
- Helibase
- Helispot
- Water Source
- Restricted Water Source
- Mobile Weather Station
- Road Closure
- Fire Location
- Fire Location- Out
- Dozer Line Identified for Repair
- No Repair Required
- Dozer Line In Progress
- Completed Repair
- Dozer Line, Unknown
- Handline Identified for Repair
- Unknown Road, Identified for Repair



Suppression Repair

Fork Complex
CA-SHF 002067
8/28/2015 Day Shift
Status Update



Page A1

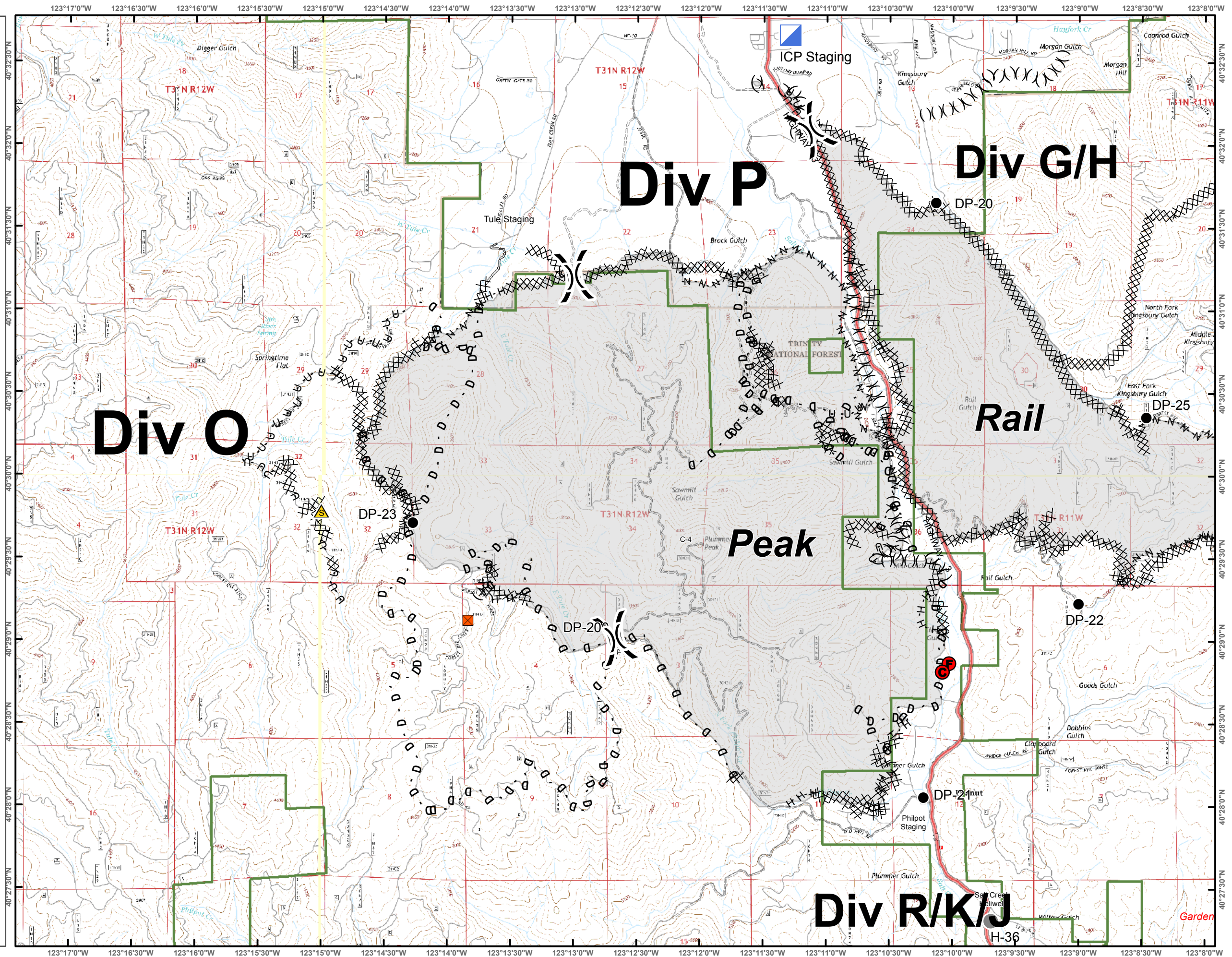
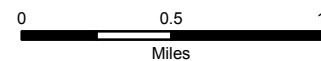
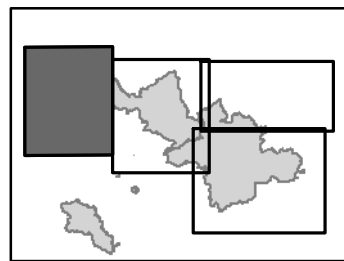
- Drop Point
- Helispot
- ▣ Incident Command Post
- Ⓟ Pump
- () Division Break

Repair Points

- ▣ Barrier
- ⚠ Safety Zones
- Ⓡ Repair
- Ⓢ Repair Culvert
- Ⓣ Repair Fence

Fireline Repair Status

- XXXX Dozer Line, Identified for Repair
- N - N - No Repair Required
- P - P Dozer Line, In Progress
- D - D Completed Repair
- () Dozer Line, Unknown
- H - H Handline, Identified for Repair
- U - U Unknown
- ▬ Road, Identified for Repair
- ▬ Buried Water Line - No Heavy Equipment
- ☀ PG&E Gas Pipeline
- SPI Gates
- ▬ Salt Gulch Bypass
- ▬ WestExit
- ▬ County Road 330
- ▨ Wilderness Area
- ▭ Land Ownership



Suppression Repair

Fork Complex
CA-SHF 002067
8/28/2015 Day Shift
Status Update



Page A2

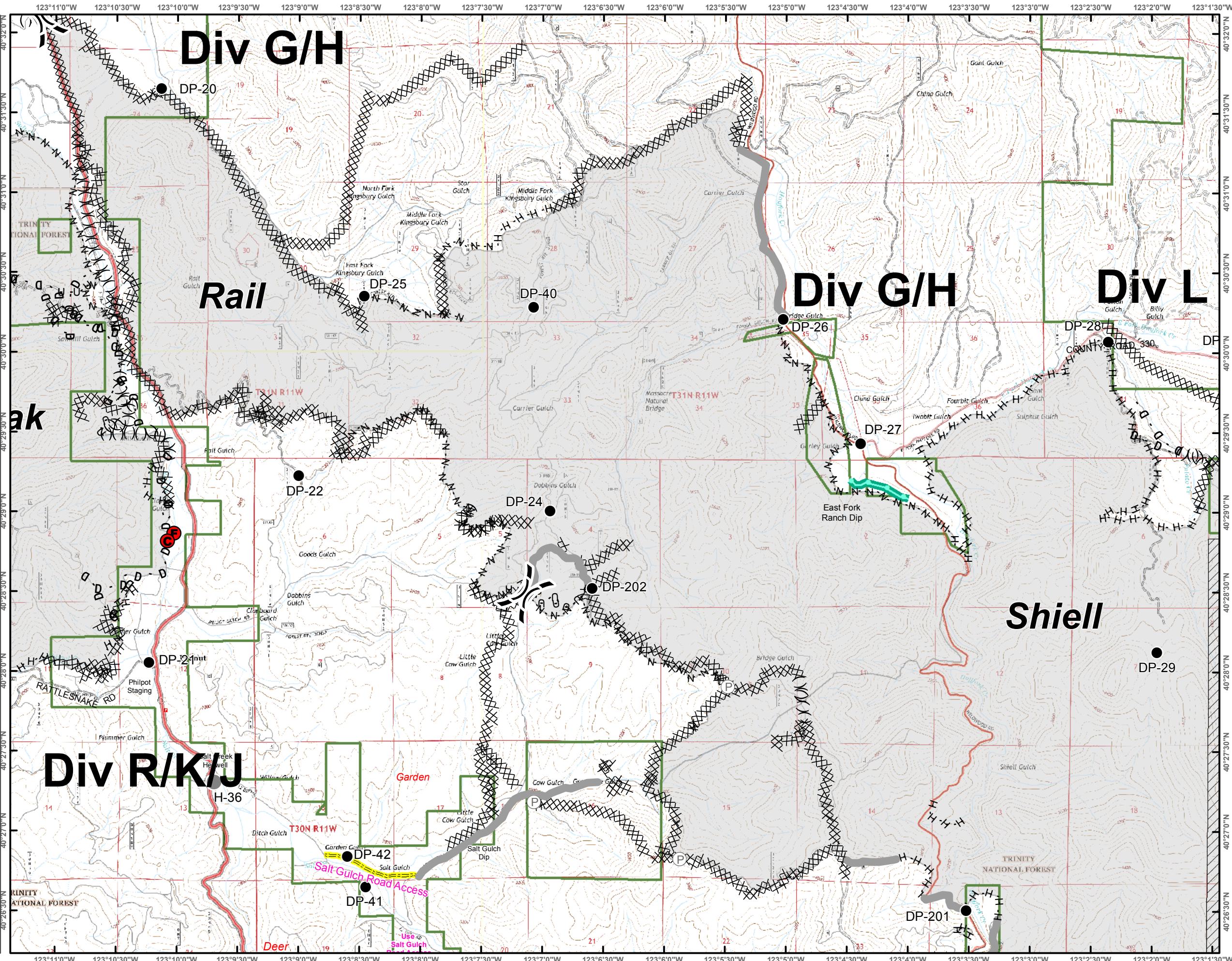
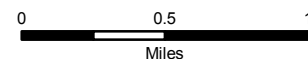
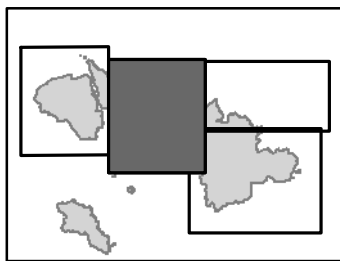
- Drop Point
- Helispot
- ▣ Incident Command Post
- Ⓟ Pump
- ⎓ Division Break

Repair Points

- ▣ Barrier
- ⚠ Safety Zones
- Ⓡ Repair
- Ⓢ Repair Culvert
- Ⓣ Repair Fence

Fireline Repair Status

- XXXX Dozer Line, Identified for Repair
- N- N - No Repair Required
- P- P Dozer Line, In Progress
- D - D Completed Repair
- (X) Dozer Line, Unknown
- H- H- Handline, Identified for Repair
- U -U- Unknown
- ▬ Road, Identified for Repair
- ▬ Buried Water Line - No Heavy Equipment
- ☀ PG&E Gas Pipeline
- SPI Gates
- ▬ Salt Gulch Bypass
- ▬ WestExit
- ▬ CountyRoad330
- ▨ Wilderness Area
- ▭ Land Ownership



Div G/H

Rail

Div G/H

Div L

Div R/K/J

Shiell

Suppression Repair

Fork Complex
 CA-SHF 002067
 8/28/2015 Day Shift
 Status Update



Page A3

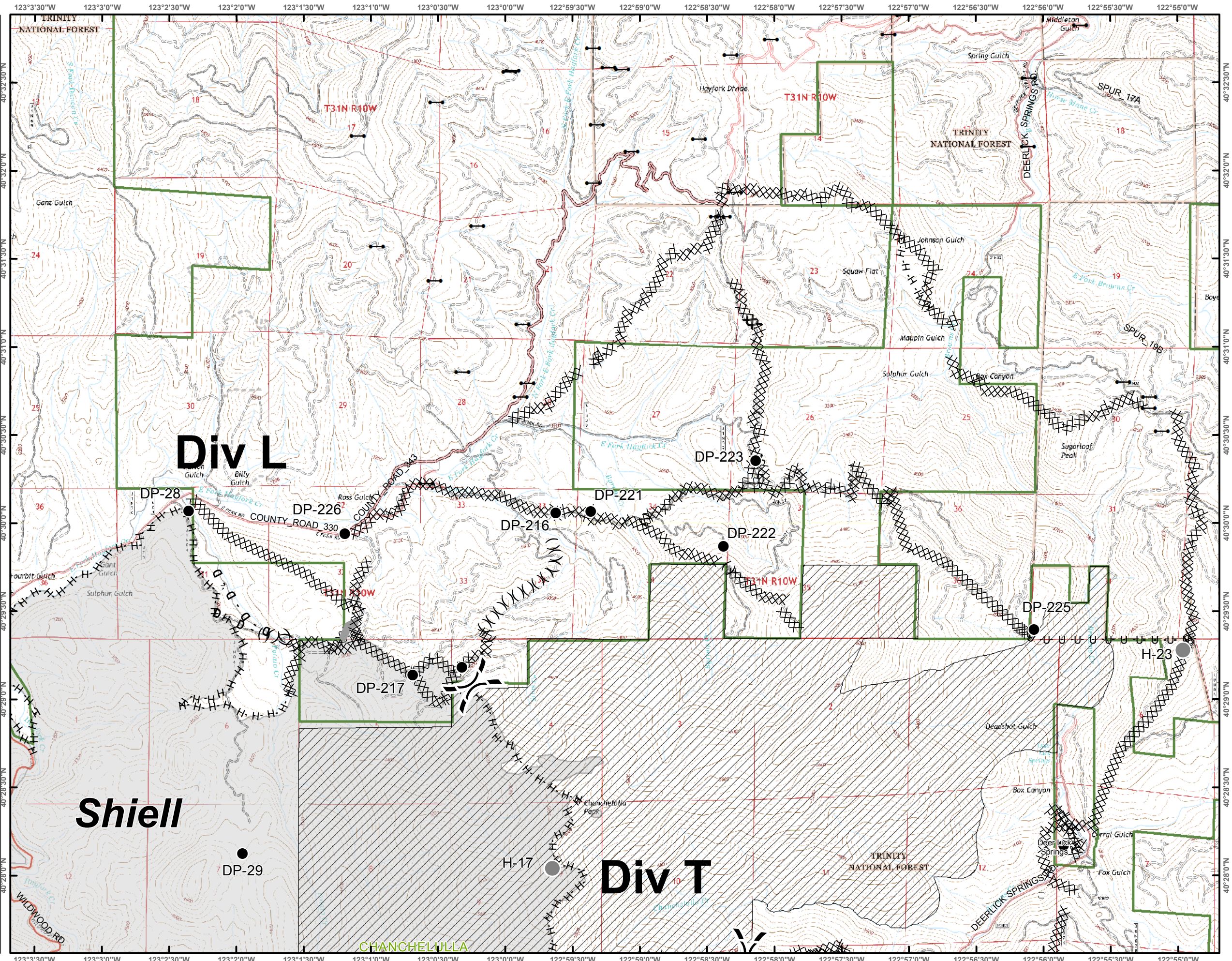
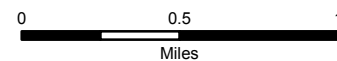
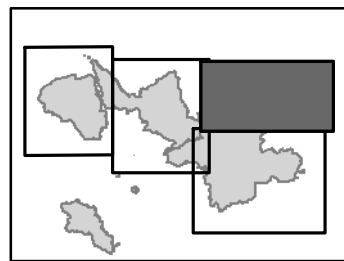
- Drop Point
- Helispot
- ▣ Incident Command Post
- Ⓟ Pump
- ⎓ Division Break

Repair Points

- ▣ Barrier
- ⚠ Safety Zones
- Ⓡ Repair
- Ⓢ Repair Culvert
- Ⓣ Repair Fence

Fireline Repair Status

- ⊗ Dozer Line, Identified for Repair
- N - N - No Repair Required
- P - P - Dozer Line, In Progress
- D - D Completed Repair
- (X) Dozer Line, Unknown
- H - H - Handline, Identified for Repair
- U - U - Unknown
- ▬ Road, Identified for Repair
- ▬ Buried Water Line - No Heavy Equipment
- ☀ PG&E Gas Pipeline
- SPI Gates
- ▬ Salt Gulch Bypass
- ▬ WestExit
- ▬ County Road 330
- ▨ Wilderness Area
- ▭ Land Ownership



Div L

Div T

Shiell

CHANCELWILLA

Suppression Repair

Fork Complex
CA-SHF 002067
8/28/2015 Day Shift
Status Update



Page B1

- Drop Point
- Helispot
- ▢ Incident Command Post
- Ⓟ Pump
- () Division Break

Repair Points

- ▣ Barrier
- ⚠ Safety Zones
- Ⓡ Repair
- Ⓢ Repair Culvert
- Ⓣ Repair Fence

Fireline Repair Status

- XXXX Dozer Line, Identified for Repair
- N - N - No Repair Required
- P - P - Dozer Line, In Progress
- D - D - Completed Repair
- () Dozer Line, Unknown
- H - H - Handline, Identified for Repair
- U - U - Unknown
- Road, Identified for Repair
- Buried Water Line - No Heavy Equipment
- ⚡ PG&E Gas Pipeline
- SPI Gates
- Salt Gulch Bypass
- WestExit
- County Road 330
- ▨ Wilderness Area
- ▭ Land Ownership

