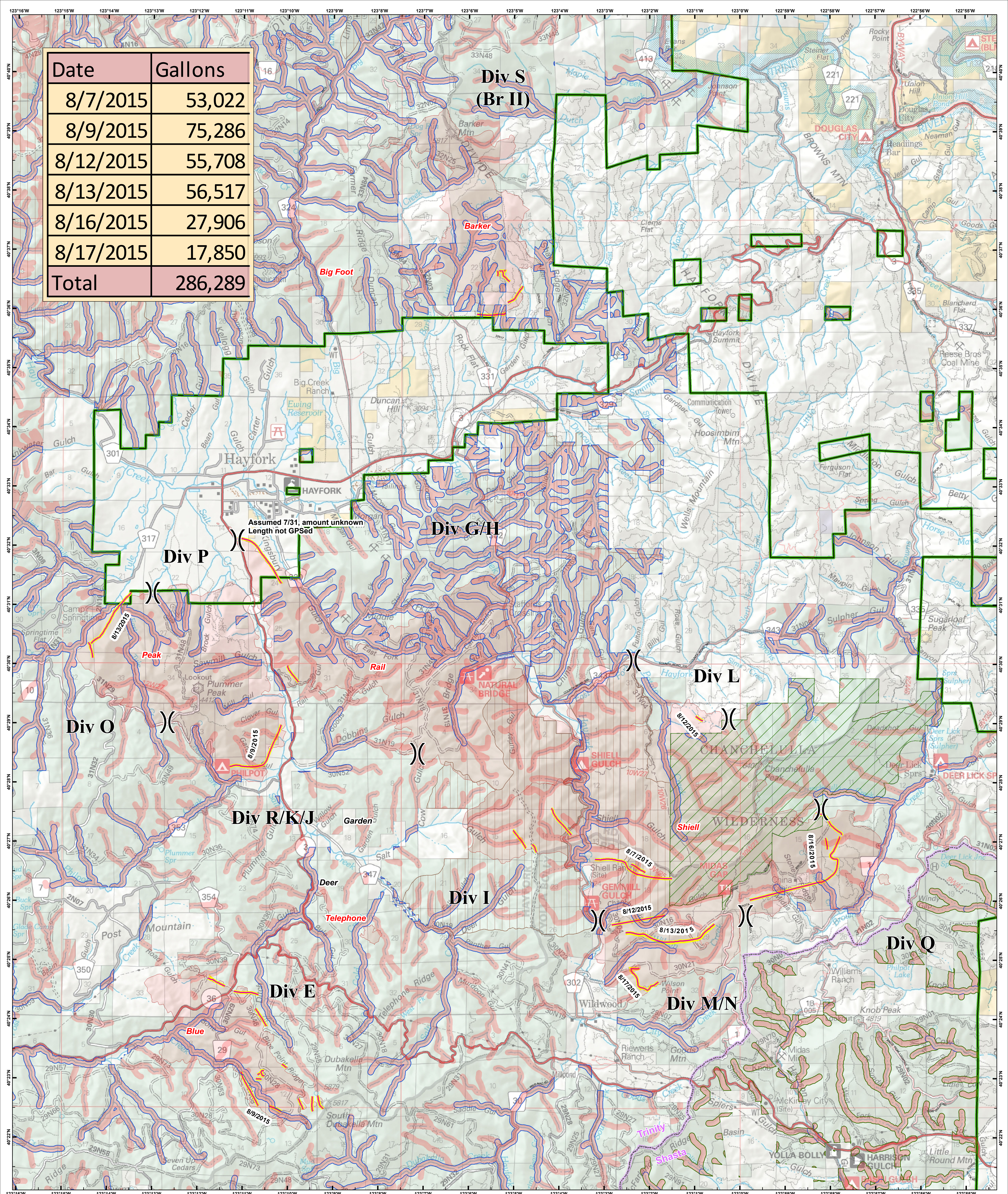


Date	Gallons
8/7/2015	53,022
8/9/2015	75,286
8/12/2015	55,708
8/13/2015	56,517
8/16/2015	27,906
8/17/2015	17,850
<b>Total</b>	<b>286,289</b>



**FORK COMPLEX**

CA-SHF-002067  
08/29/2015  
36,499 acres as of  
8/25 @0600

**RETARDANT DROP LOCATIONS AND  
RETARDANT AVOIDANCE ZONES**

- )) DivBreak
- Aerial Retardant Applications

**Retardant Avoidance Areas**

- EIS - Threatened
- EIS - Sensitive
- NHD Flowline
- NHD Waterbody
- National Forest Boundary
- Inventoried Roadless Areas
- Wilderness Area
- County Line

