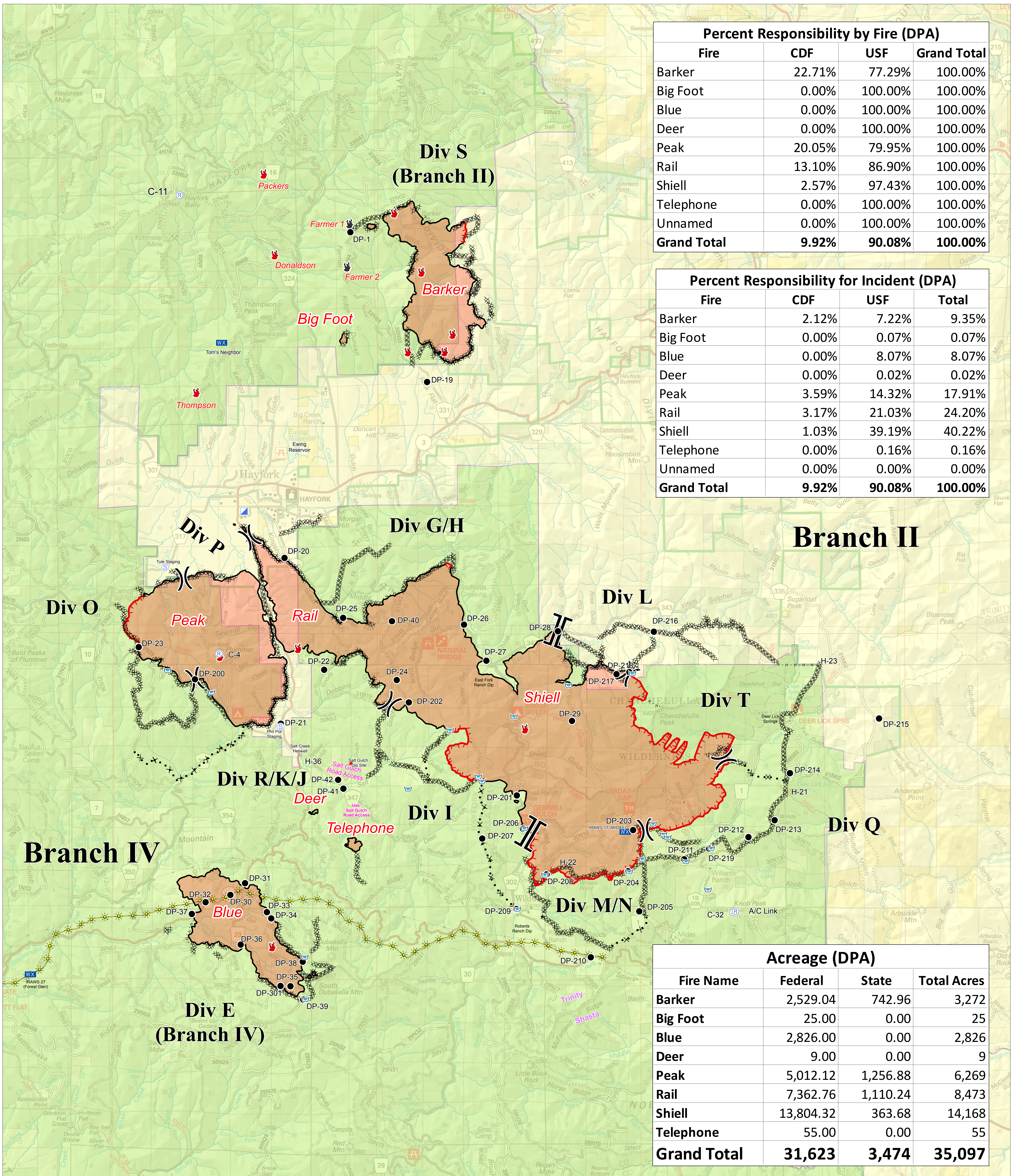


Percent Responsibility by Fire (DPA)			
Fire	CDF	USF	Grand Total
Barker	22.71%	77.29%	100.00%
Big Foot	0.00%	100.00%	100.00%
Blue	0.00%	100.00%	100.00%
Deer	0.00%	100.00%	100.00%
Peak	20.05%	79.95%	100.00%
Rail	13.10%	86.90%	100.00%
Shiell	2.57%	97.43%	100.00%
Telephone	0.00%	100.00%	100.00%
Unnamed	0.00%	100.00%	100.00%
<b>Grand Total</b>	<b>9.92%</b>	<b>90.08%</b>	<b>100.00%</b>

Percent Responsibility for Incident (DPA)			
Fire	CDF	USF	Total
Barker	2.12%	7.22%	9.35%
Big Foot	0.00%	0.07%	0.07%
Blue	0.00%	8.07%	8.07%
Deer	0.00%	0.02%	0.02%
Peak	3.59%	14.32%	17.91%
Rail	3.17%	21.03%	24.20%
Shiell	1.03%	39.19%	40.22%
Telephone	0.00%	0.16%	0.16%
Unnamed	0.00%	0.00%	0.00%
<b>Grand Total</b>	<b>9.92%</b>	<b>90.08%</b>	<b>100.00%</b>

Acreage (DPA)			
Fire Name	Federal	State	Total Acres
Barker	2,529.04	742.96	3,272
Big Foot	25.00	0.00	25
Blue	2,826.00	0.00	2,826
Deer	9.00	0.00	9
Peak	5,012.12	1,256.88	6,269
Rail	7,362.76	1,110.24	8,473
Shiell	13,804.32	363.68	14,168
Telephone	55.00	0.00	55
<b>Grand Total</b>	<b>31,623</b>	<b>3,474</b>	<b>35,097</b>



**Cost Share DPA**  
 Fork Complex  
 CA-SHF 002067  
 08/18/2015



● Drop Point	▣ Incident Command Post	⊙ Staging Area	— Completed Line	⊗ Proposed Dozer Line
🔥 Fire Location	📡 Mobile Weather Unit	📶 Dip Site	⊘ Dozer Line	🔴 Uncontrolled Fire Edge
👤 Fire Location - Out	📡 Repeater	⊘ Branch	⊘ Handline	🌟 PG&E Gas Pipeline
		⊘ Division		

**DPA AGENCY**

▣ CDF

▣ USF

N

0 1 2 Miles