

Percent Responsibility by Fire (DPA)

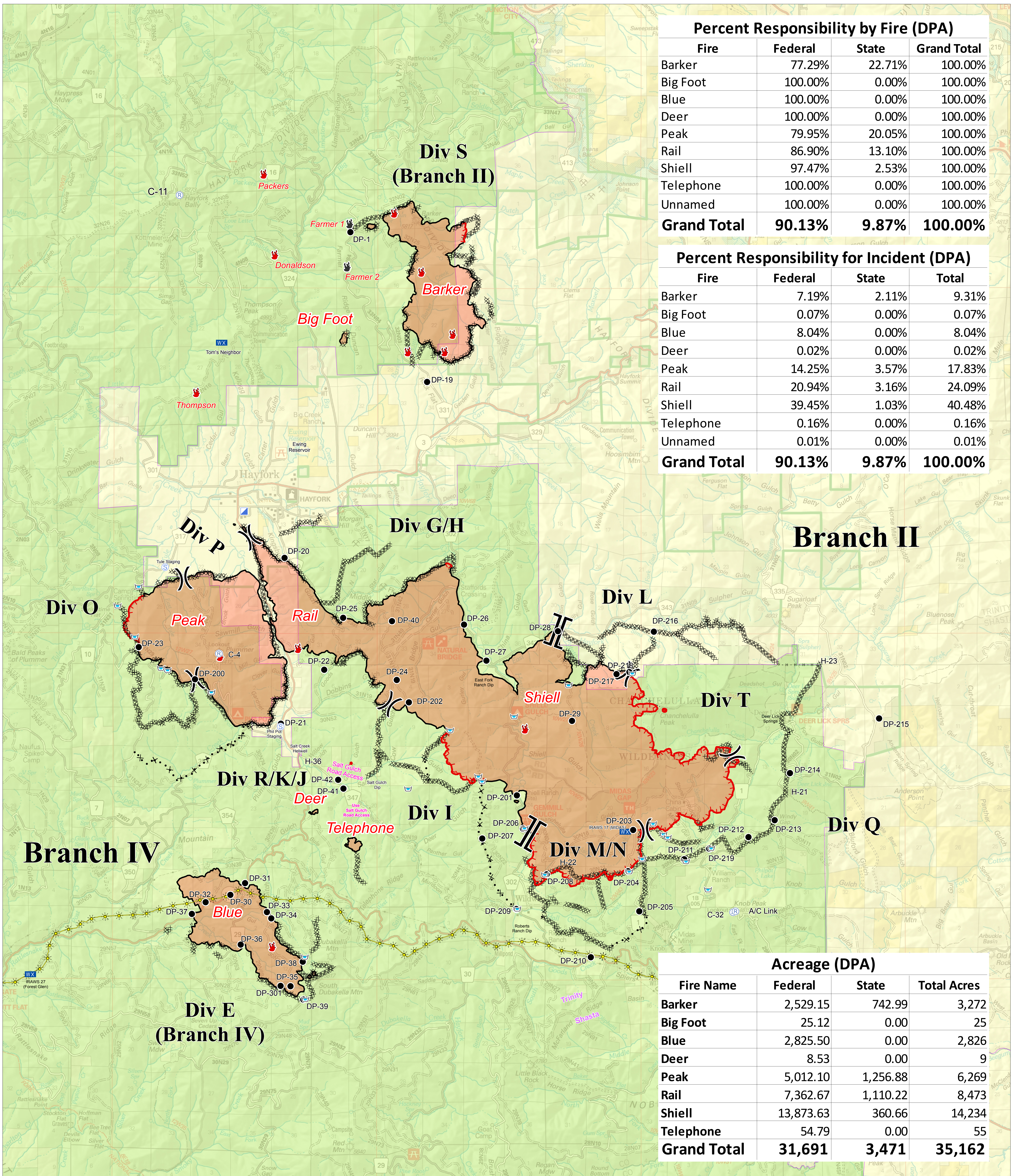
Fire	Federal	State	Grand Total
Barker	77.29%	22.71%	100.00%
Big Foot	100.00%	0.00%	100.00%
Blue	100.00%	0.00%	100.00%
Deer	100.00%	0.00%	100.00%
Peak	79.95%	20.05%	100.00%
Rail	86.90%	13.10%	100.00%
Shiell	97.47%	2.53%	100.00%
Telephone	100.00%	0.00%	100.00%
Unnamed	100.00%	0.00%	100.00%
Grand Total	90.13%	9.87%	100.00%

Percent Responsibility for Incident (DPA)

Fire	Federal	State	Total
Barker	7.19%	2.11%	9.31%
Big Foot	0.07%	0.00%	0.07%
Blue	8.04%	0.00%	8.04%
Deer	0.02%	0.00%	0.02%
Peak	14.25%	3.57%	17.83%
Rail	20.94%	3.16%	24.09%
Shiell	39.45%	1.03%	40.48%
Telephone	0.16%	0.00%	0.16%
Unnamed	0.01%	0.00%	0.01%
Grand Total	90.13%	9.87%	100.00%

Acreage (DPA)

Fire Name	Federal	State	Total Acres
Barker	2,529.15	742.99	3,272
Big Foot	25.12	0.00	25
Blue	2,825.50	0.00	2,826
Deer	8.53	0.00	9
Peak	5,012.10	1,256.88	6,269
Rail	7,362.67	1,110.22	8,473
Shiell	13,873.63	360.66	14,234
Telephone	54.79	0.00	55
Grand Total	31,691	3,471	35,162

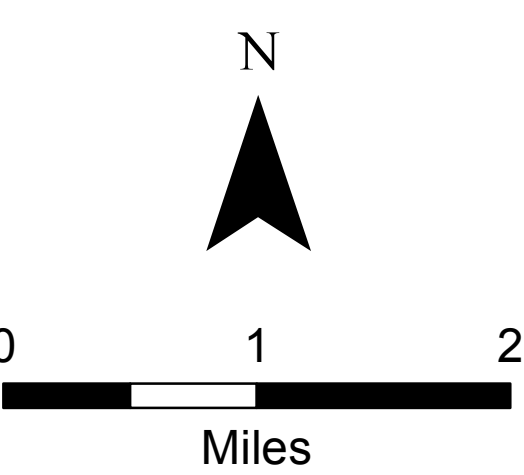


Cost Share DPA

Fork Complex
CA-SHF 002067
08/19/2015



- Drop Point
- Incident Command Post
- ⊙ Staging Area
- ✱ PGE_pipelines_digitized2
- Completed Line
- ✱ ✱ Proposed Dozer Line
- 🔥 Fire Location
- 📶 Mobile Weather Unit
- 🏠 Dip Site
- XXXXX Dozer Line
- DPA AGENCY
- 👤 Fire Location - Out
- 📡 Repeater
- || Branch
- Handline
- 🔴 Uncontrolled Fire Edge
- 🟢 USF
- 🟡 CDF



DPA