

Percent Responsibility by Fire (DPA)

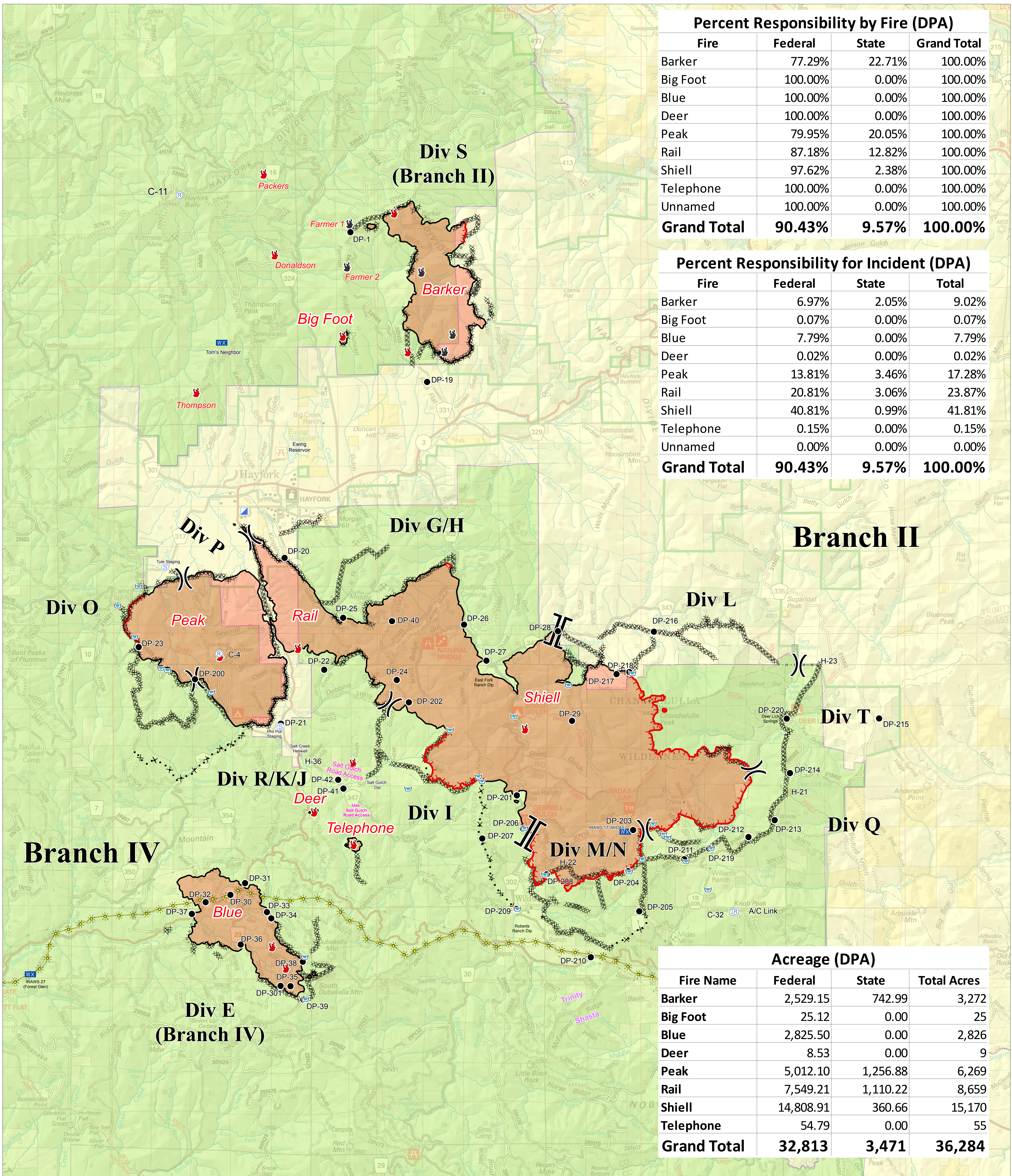
Fire	Federal	State	Grand Total
Barker	77.29%	22.71%	100.00%
Big Foot	100.00%	0.00%	100.00%
Blue	100.00%	0.00%	100.00%
Deer	100.00%	0.00%	100.00%
Peak	79.95%	20.05%	100.00%
Rail	87.18%	12.82%	100.00%
Shiell	97.62%	2.38%	100.00%
Telephone	100.00%	0.00%	100.00%
Unnamed	100.00%	0.00%	100.00%
Grand Total	90.43%	9.57%	100.00%

Percent Responsibility for Incident (DPA)

Fire	Federal	State	Total
Barker	6.97%	2.05%	9.02%
Big Foot	0.07%	0.00%	0.07%
Blue	7.79%	0.00%	7.79%
Deer	0.02%	0.00%	0.02%
Peak	13.81%	3.46%	17.28%
Rail	20.81%	3.06%	23.87%
Shiell	40.81%	0.99%	41.81%
Telephone	0.15%	0.00%	0.15%
Unnamed	0.00%	0.00%	0.00%
Grand Total	90.43%	9.57%	100.00%

Acreage (DPA)

Fire Name	Federal	State	Total Acres
Barker	2,529.15	742.99	3,272
Big Foot	25.12	0.00	25
Blue	2,825.50	0.00	2,826
Deer	8.53	0.00	9
Peak	5,012.10	1,256.88	6,269
Rail	7,549.21	1,110.22	8,659
Shiell	14,808.91	360.66	15,170
Telephone	54.79	0.00	55
Grand Total	32,813	3,471	36,284

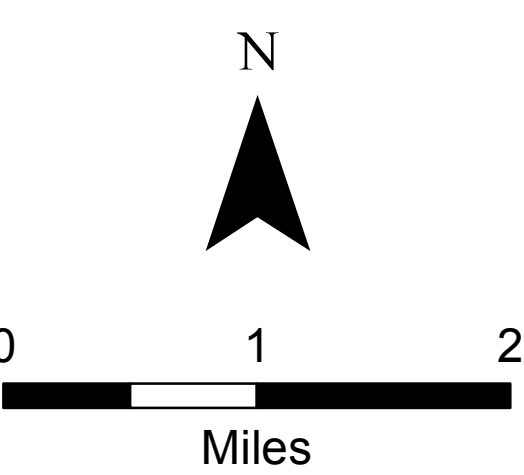


Cost Share DPA

Fork Complex
 CA-SHF 002067
 08/20/2015



- Drop Point
- Incident Command Post
- ⊙ Staging Area
- ⚡ PG & E Pipeline
- Completed Line
- ⊗ Proposed Dozer Line
- 🔥 Fire Location
- 📡 Mobile Weather Unit
- 📡 Repeater
- 📡 Dip Site
- 🚧 Dozer Line
- 🚧 Handline
- 🔴 Uncontrolled Fire Edge
- DPA AGENCY**
- 🟡 CDF
- 🟢 USF
- || Branch
-) Division



DPA